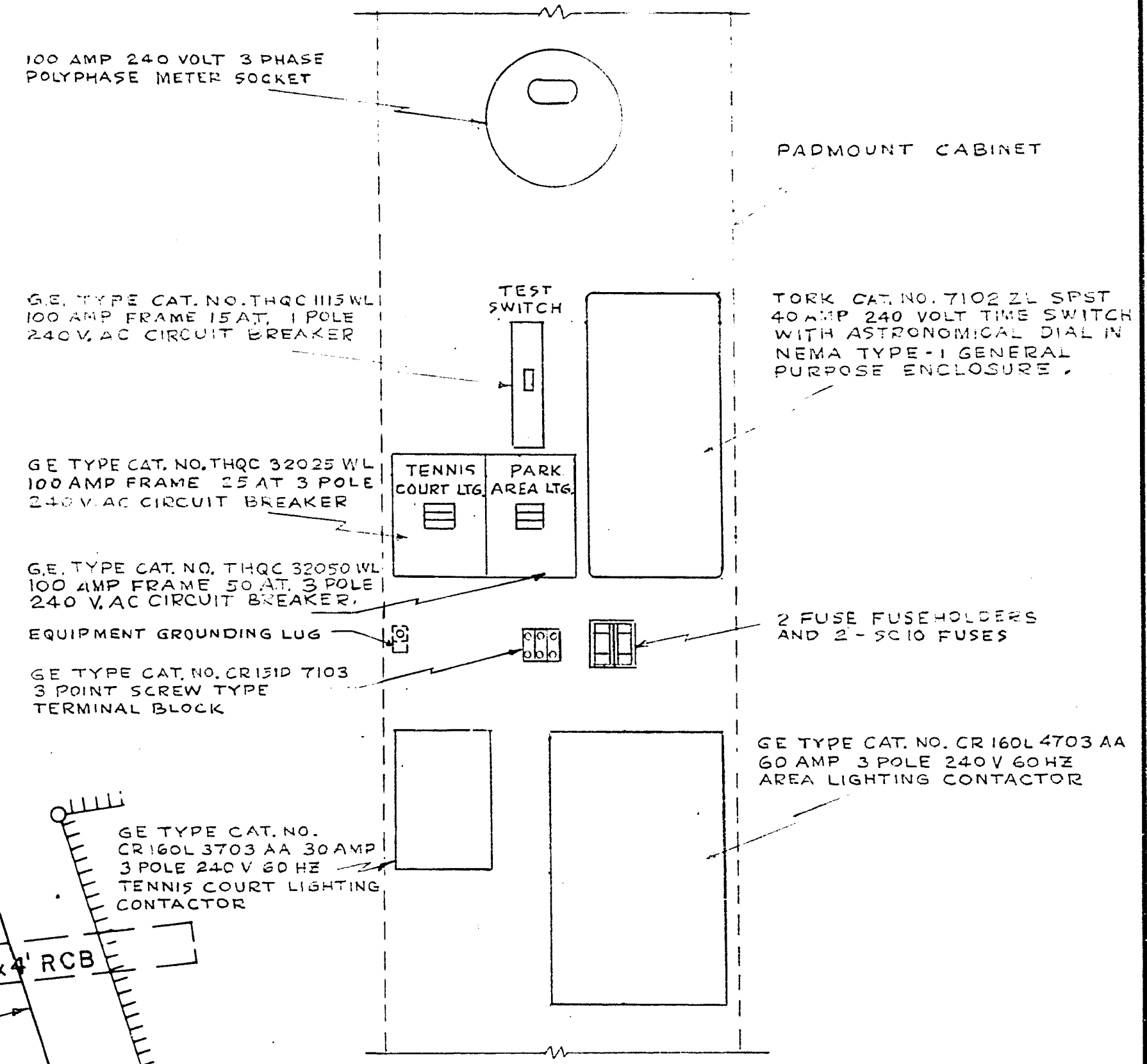
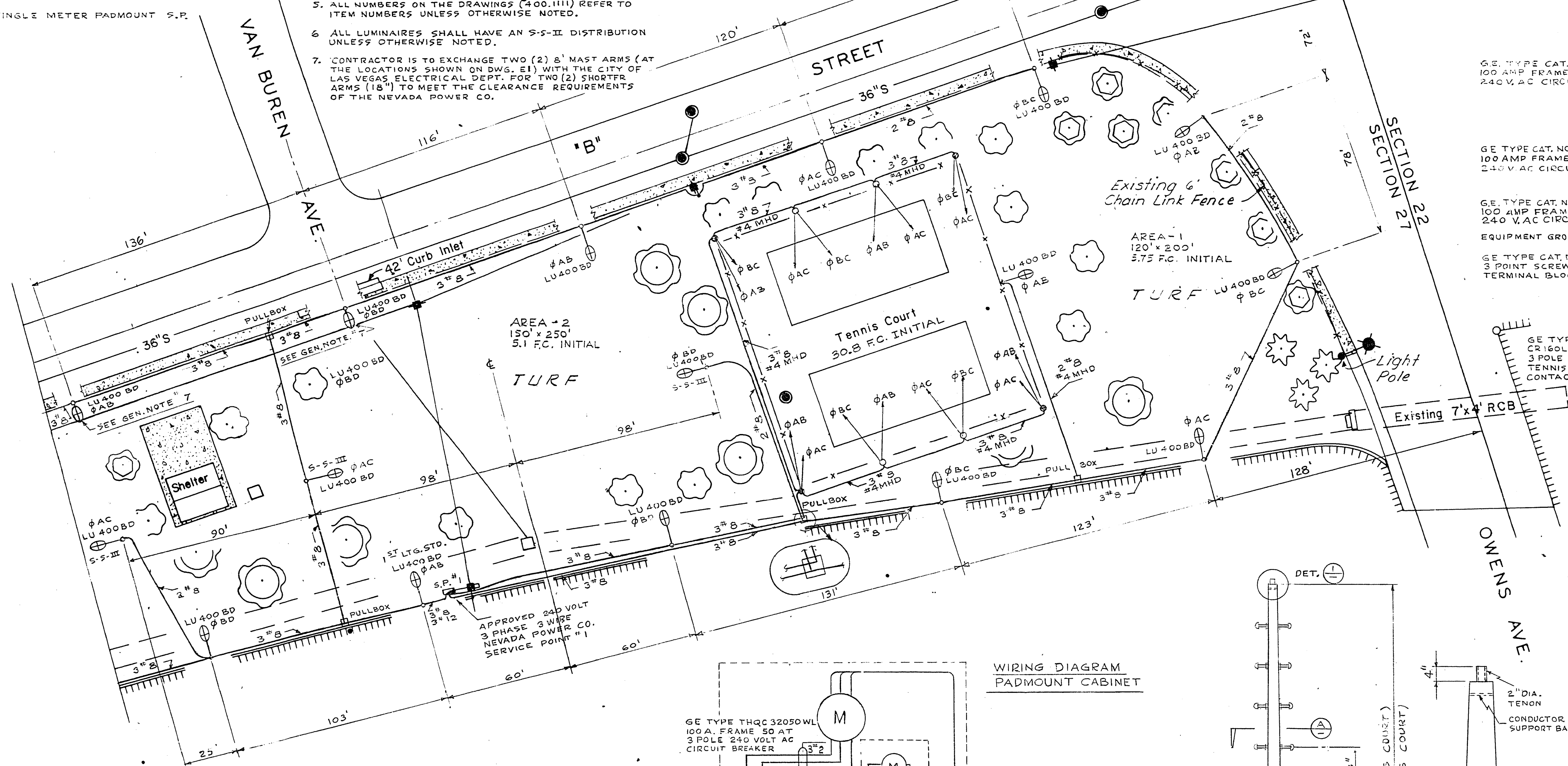


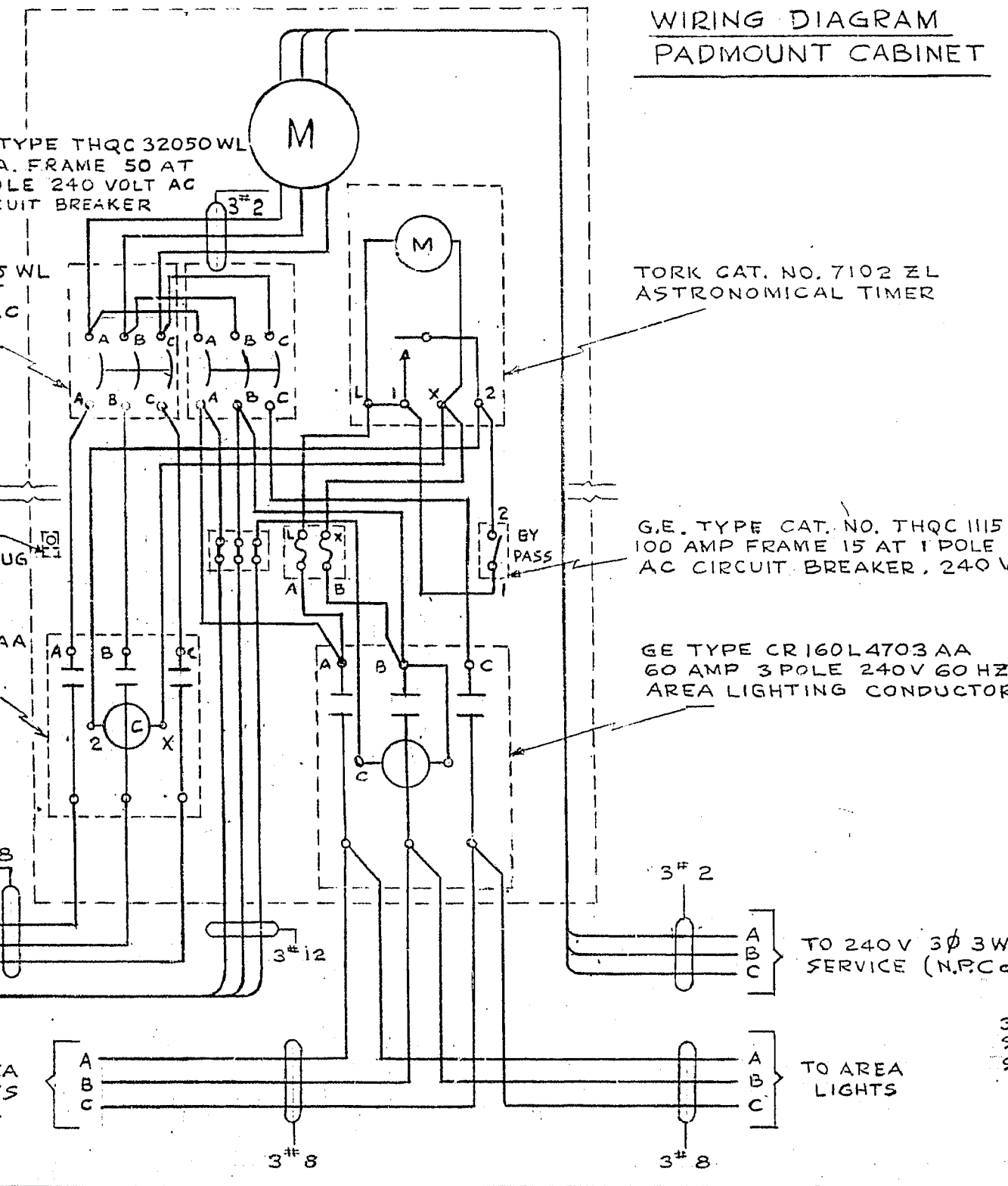
FED. NO.	STATE	PROJECT NO.	MILEPOST	SHEET NO.
9	NEVADA	I-015-11	CL 43.38	

- LEGEND-**
- ⊗ TENNIS COURT 35' POLE, 2 FLOODLIGHTS.
 - ⊗ TENNIS COURT 40' POLE, 2 FLOODLIGHTS.
 - ⊗ 400.1111 STD. WITH 400 W LUMINAIRE.
 - ⊗ 400.1111 STD. WITH 250 W LUMINAIRE.
 - ⊗ 400.1111 STD. WITH 1000 W FLOODLIGHT.
 - ⊗ 400.1111 STD. WITH (2) 1000 W FLOODLIGHTS
 - ⊠ SINGLE METER PADMOUNT S.P.

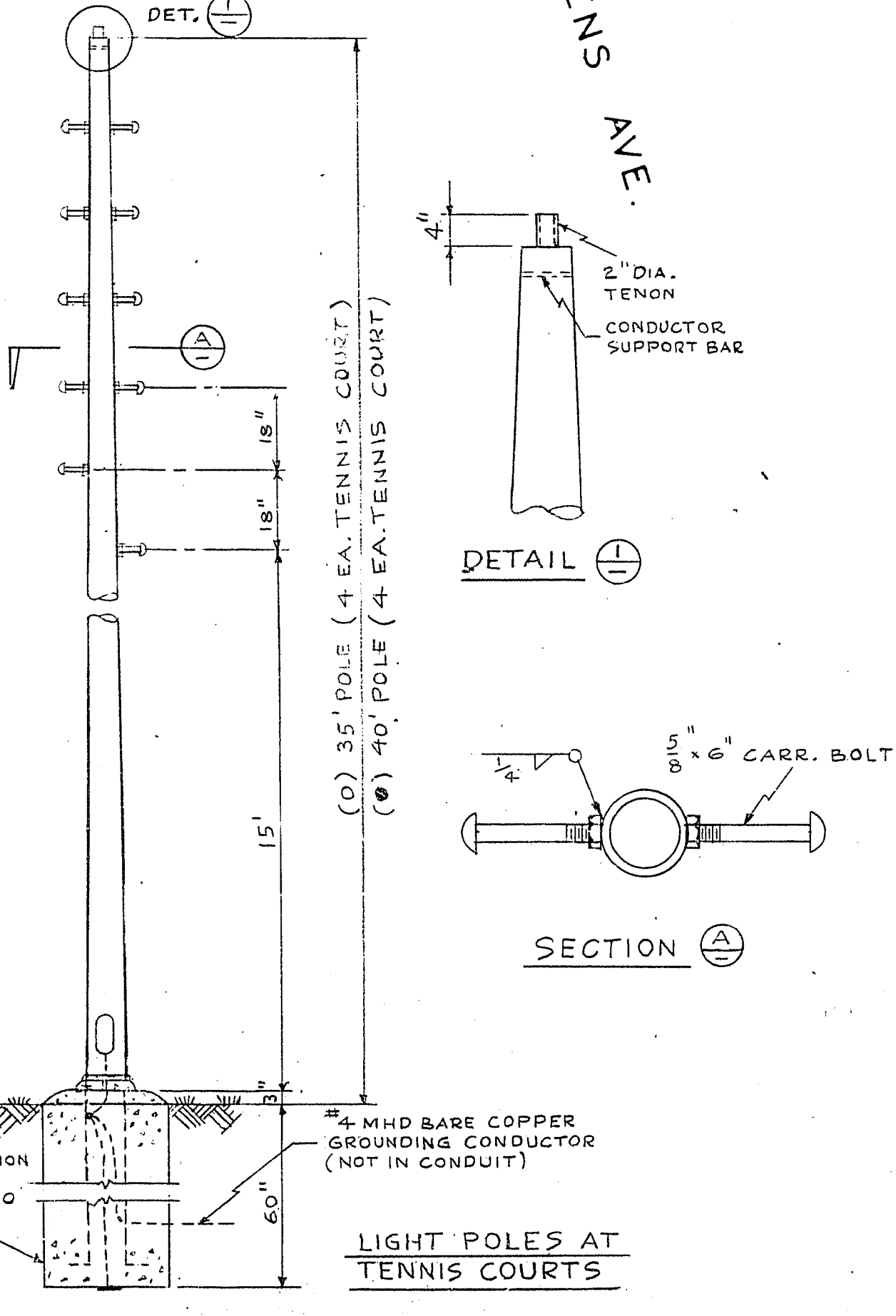
- GENERAL NOTES -**
1. ALL STANDARDS (S) LOCATED IN THE MIDDLE OF THE PARK SHALL BE CENTERED BETWEEN BACK SIDEWALK AND FENCE ON FREEWAY.
 2. ALL CONDUIT SHALL BE 1" PVC AND HAVE 24" MINIMUM COVER.
 3. DETAILS ARE FOR ALL LOCATIONS IN BOTH PARKS UNLESS OTHERWISE NOTED.
 4. SALVAGEABLE MATERIALS SHALL BE REMOVED AS PER TECHNICAL SPECIFICATIONS.
 5. ALL NUMBERS ON THE DRAWINGS (400.1111) REFER TO ITEM NUMBERS UNLESS OTHERWISE NOTED.
 6. ALL LUMINAIRES SHALL HAVE AN S-S-II DISTRIBUTION UNLESS OTHERWISE NOTED.
 7. CONTRACTOR IS TO EXCHANGE TWO (2) 8" MAST ARMS (AT THE LOCATIONS SHOWN ON DWG. E1) WITH THE CITY OF LAS VEGAS, ELECTRICAL DEPT. FOR TWO (2) SHORTER ARMS (18") TO MEET THE CLEARANCE REQUIREMENTS OF THE NEVADA POWER CO.



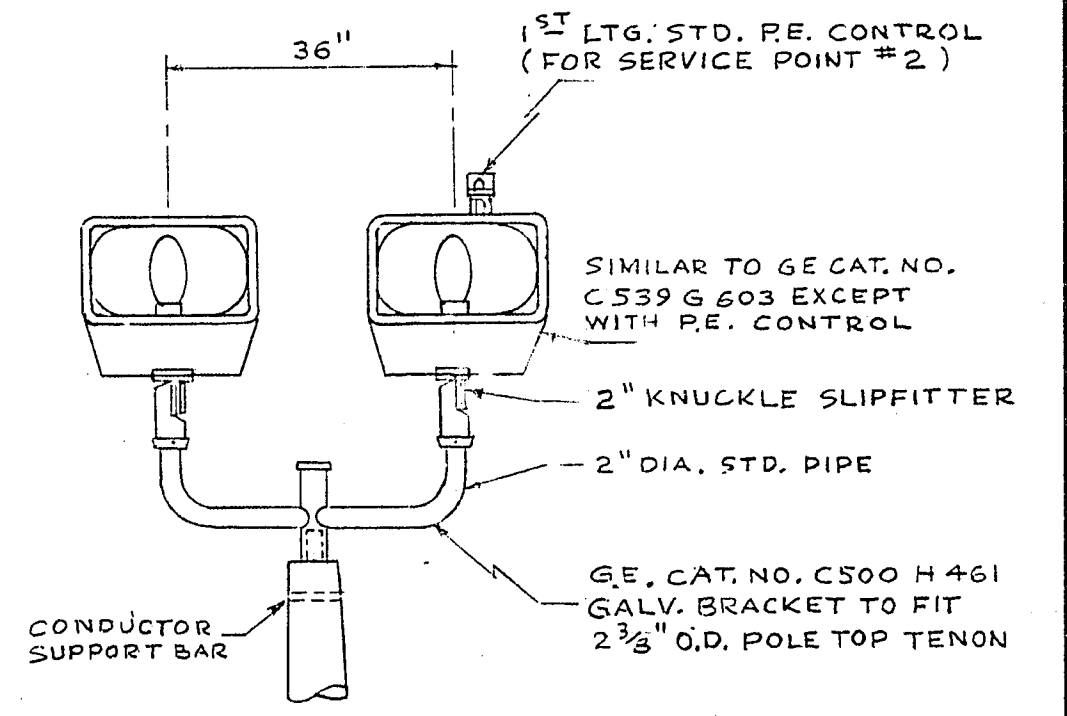
LOCATION OF ITEMS INSIDE PADMOUNT CABINET



WIRING DIAGRAM PADMOUNT CABINET



SECTION A LIGHT POLES AT TENNIS COURTS



LIGHTING @ TENNIS COURTS & MORGAN ST. AREA LIGHTING

APPROVED - NEVADA POWER CO. DATE

STATE OF NEVADA
DEPARTMENT OF HIGHWAYS

**"B" STREET
MINI-PARK
PLANTING PLAN**