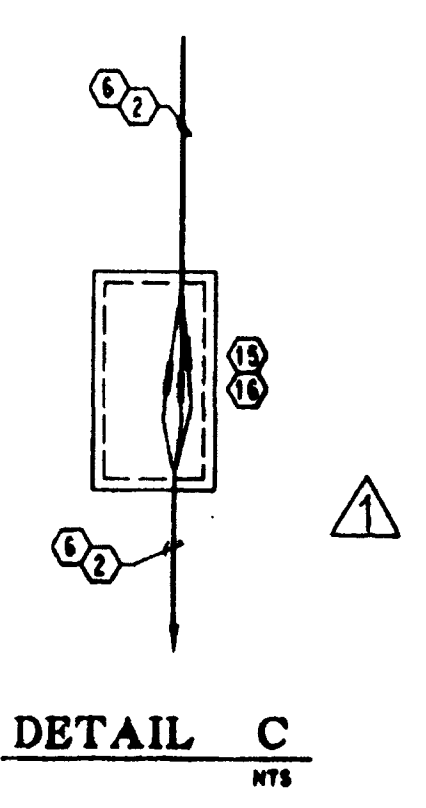
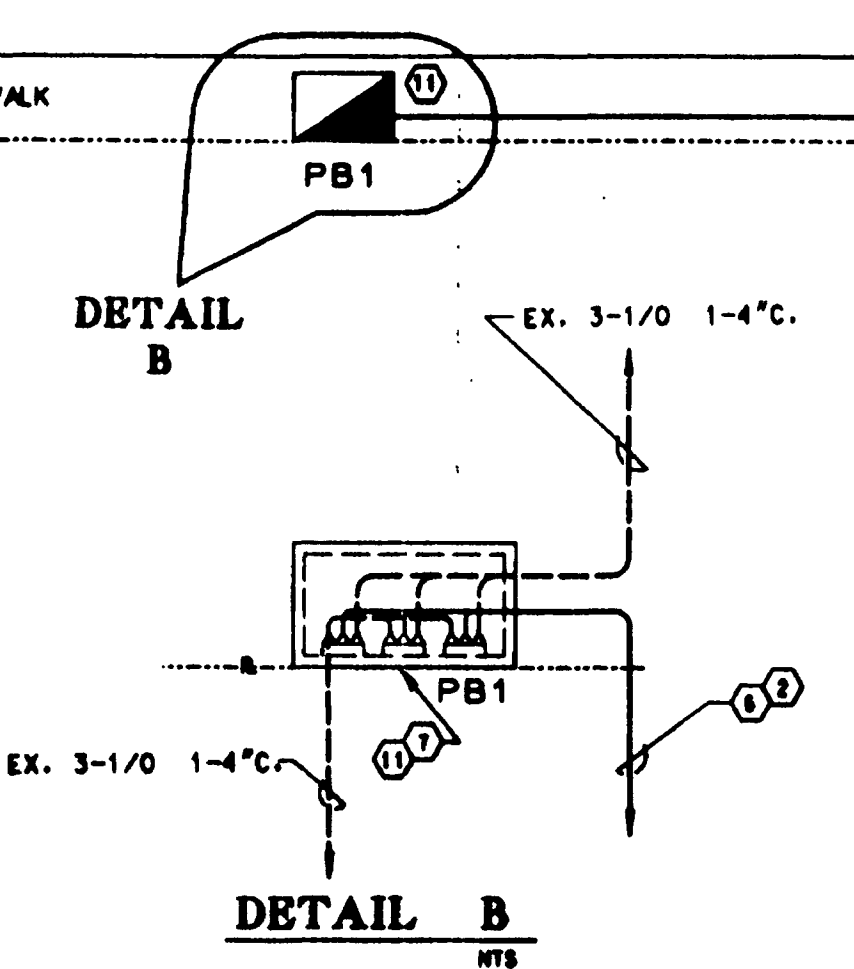
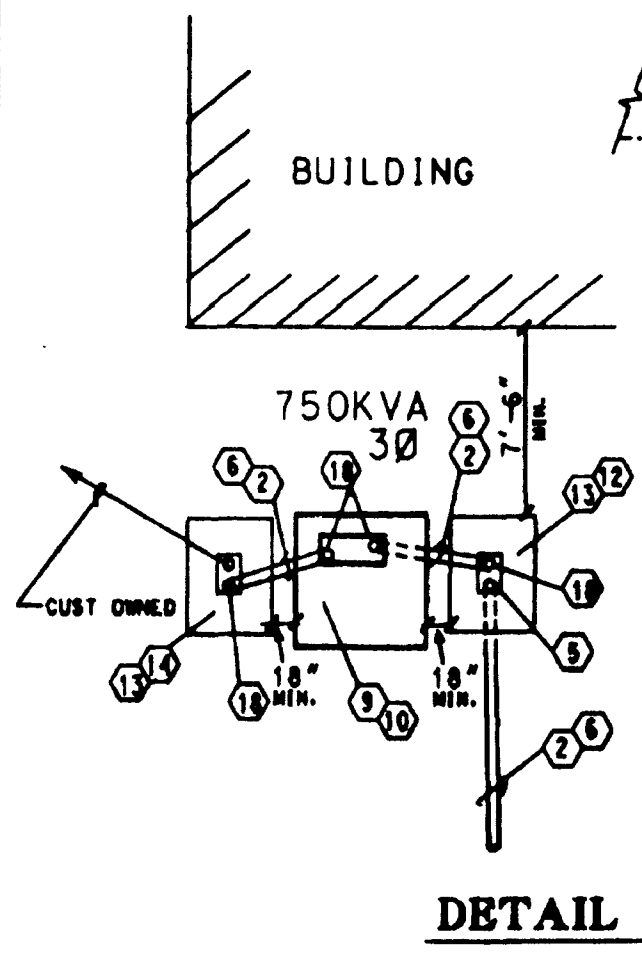
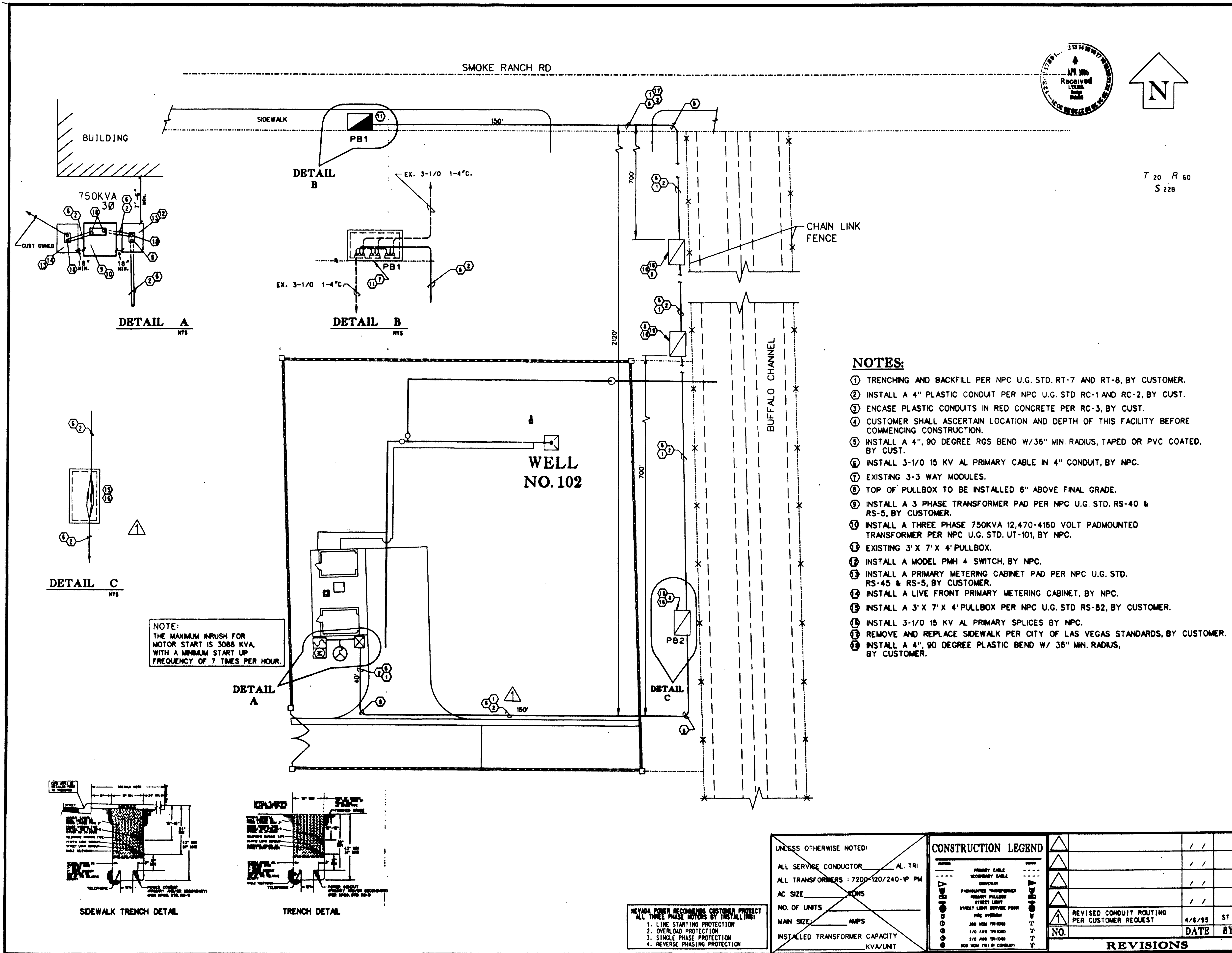
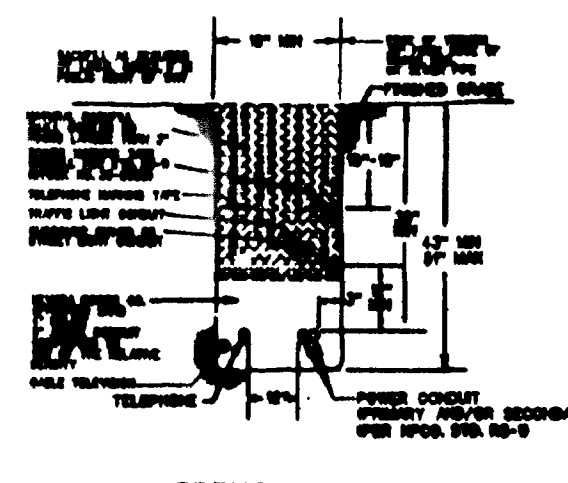
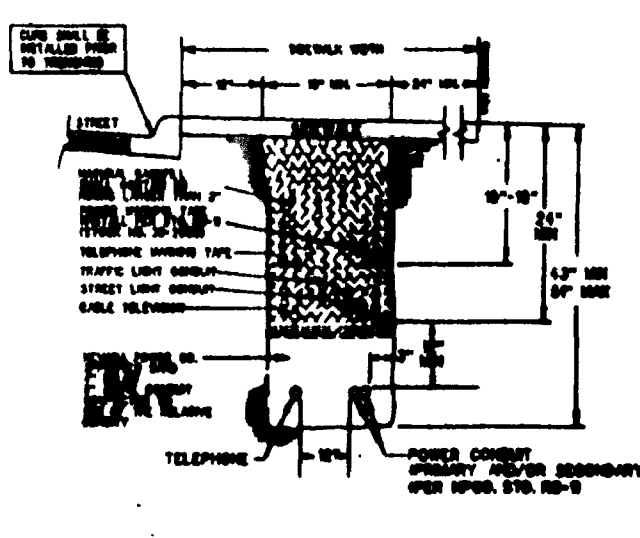


29-5-91



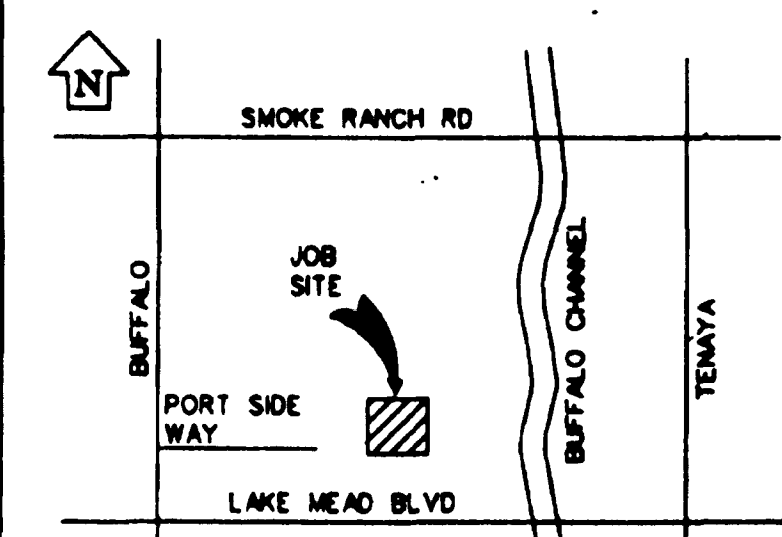
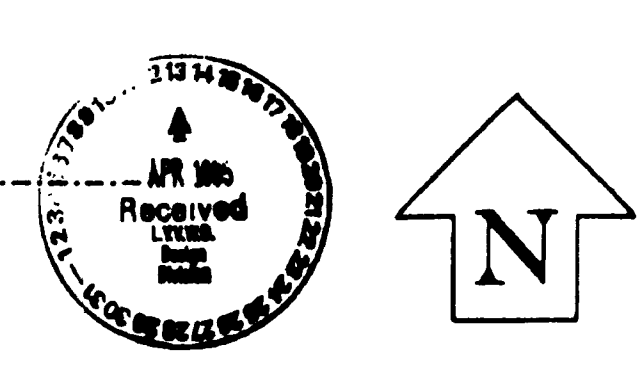
NOTE:
THE MAXIMUM INRUSH FOR
MOTOR START IS 3088 KVA,
WITH A MINIMUM START UP
FREQUENCY OF 7 TIMES PER HOUR.



NEVADA POWER RECOMMENDS CUSTOMER PROTECT
ALL THREE PHASE MOTORS BY INSTALLING:
1. LINE STARTING PROTECTION
2. OVERLOAD PROTECTION
3. SINGLE PHASE PROTECTION
4. REVERSE PHASING PROTECTION

NOTES:

- ① TRENCHING AND BACKFILL PER NPC U.G. STD. RT-7 AND RT-8, BY CUSTOMER.
- ② INSTALL A 4" PLASTIC CONDUIT PER NPC U.G. STD RC-1 AND RC-2, BY CUST.
- ③ ENCASE PLASTIC CONDUITS IN RED CONCRETE PER RC-3, BY CUST.
- ④ CUSTOMER SHALL ASCERTAIN LOCATION AND DEPTH OF THIS FACILITY BEFORE COMMENCING CONSTRUCTION.
- ⑤ INSTALL A 4", 90 DEGREE RGS BEND W/36" MIN. RADIUS, TAPED OR PVC COATED, BY CUST.
- ⑥ INSTALL 3-1/0 15 KV AL PRIMARY CABLE IN 4" CONDUIT, BY NPC.
- ⑦ EXISTING 3-3 WAY MODULES.
- ⑧ TOP OF PULLBOX TO BE INSTALLED 6" ABOVE FINAL GRADE.
- ⑨ INSTALL A 3 PHASE TRANSFORMER PAD PER NPC U.G. STD. RS-40 & RS-5, BY CUSTOMER.
- ⑩ INSTALL A THREE PHASE 750KVA 12,470-4160 VOLT PADMOUNTED TRANSFORMER PER NPC U.G. STD. UT-101, BY NPC.
- ⑪ EXISTING 3' X 7' X 4' PULLBOX.
- ⑫ INSTALL A MODEL PMH 4 SWITCH, BY NPC.
- ⑬ INSTALL A PRIMARY METERING CABINET PAD PER NPC U.G. STD. RS-45 & RS-5, BY CUSTOMER.
- ⑭ INSTALL A LIVE FRONT PRIMARY METERING CABINET, BY NPC.
- ⑮ INSTALL A 3' X 7' X 4' PULLBOX PER NPC U.G. STD RS-82, BY CUSTOMER.
- ⑯ INSTALL 3-1/0 15 KV AL PRIMARY SPLICES BY NPC.
- ⑰ REMOVE AND REPLACE SIDEWALK PER CITY OF LAS VEGAS STANDARDS, BY CUSTOMER.
- ⑱ INSTALL A 4", 90 DEGREE PLASTIC BEND W/ 36" MIN. RADIUS, BY CUSTOMER.



CONSTRUCTION NOTES

CUSTOMER IS RESPONSIBLE TO OBTAIN A CURRENT NEVADA POWER ELECTRIC SERVICE REQUIREMENTS BOOK BEFORE COMMENCING CONSTRUCTION

EVERY EFFORT HAS BEEN MADE TO IDENTIFY ALL NPC FACILITIES. THE CUSTOMER SHALL CONFIRM THE EXISTENCE AND LOCATION OF THESE FACILITIES.

NOTE TO DEVELOPERS

4" CONDUIT AND 4", 90 DEGREE PLASTIC BENDS WITH A MINIMUM 36" RADIUS WILL BE REQUIRED. BY NEVADA POWER COMPANY FOR ALL INSTALLATIONS OF 500 MCM TRI, SEC. CABLE

STANDARD AS BUILT UNDERGROUND AERIAL	SPRING CONTACT PHONE NUMBER DATE OF CONTACT
R/W - 31 UNDERGROUND UNDERGROUND BY EXHIBIT PERMITS BLM	TO SET NEW POLES TO REMOVE EX. POLES TO REMOVE EX. POLES
3RD PARTY NOT REQUIRED	JPA #

NPC CONTACT: JOE MEE	PHONE: 657-4315
CELLULAR: 275-6284	DCAL: -
FOR U.G. TRENCH INSPECTOR: 378-3725	(48 HOURS IN ADVANCE)
FOR WORK SCHEDULING: 657-4116	
FOR LINE LOCATION: -	
CUST. CONTACT: BING	258-3942
DISTRICT: LAS VEGAS	SPRING VALLEY HEND.
CUST. APPROV. DATE: 2-28-95	GOVT. APPROV. DATE: 3-27-95
CITY: CLV	COUNTY: HENDERSON N. LAS VEGAS

UNLESS OTHERWISE NOTED:

ALL SERVICE CONDUCTOR AL, TRI

ALL TRANSFORMERS: 7200-120/240-V PM

AC SIZE: KANS

NO. OF UNITS: _____

MAIN SIZE: _____ AMPS

INSTALLED TRANSFORMER CAPACITY: _____ KVA/UNIT

CONSTRUCTION LEGEND

PRIMARY CABLE	---
SECONDARY CABLE	----
BIWIRE	----
PADMOUNTED TRANSFORMER	⊠
PRIMARY PULLBOX	⊞
STREET LIGHT	⊡
STREET LIGHT SERVICE POINT	⊙
300 MCM TRI	⊘
4/0 AHS TRI	⊙
3/0 AHS TRI	⊙
300 MCM TRI IN CONDUIT	⊙

NO.	REVISIONS	DATE	BY

NEVADA POWER COMPANY
LAS VEGAS, NEVADA

LVVWD
WELL #102

W.R. NO. 51100 565-267

SHT. NO. 1 OF 1 DATE: 2-21-95

9530

