

# FINAL PLAT OF PARADISE MEADOWS UNIT 2

( A COMMON INTEREST COMMUNITY )

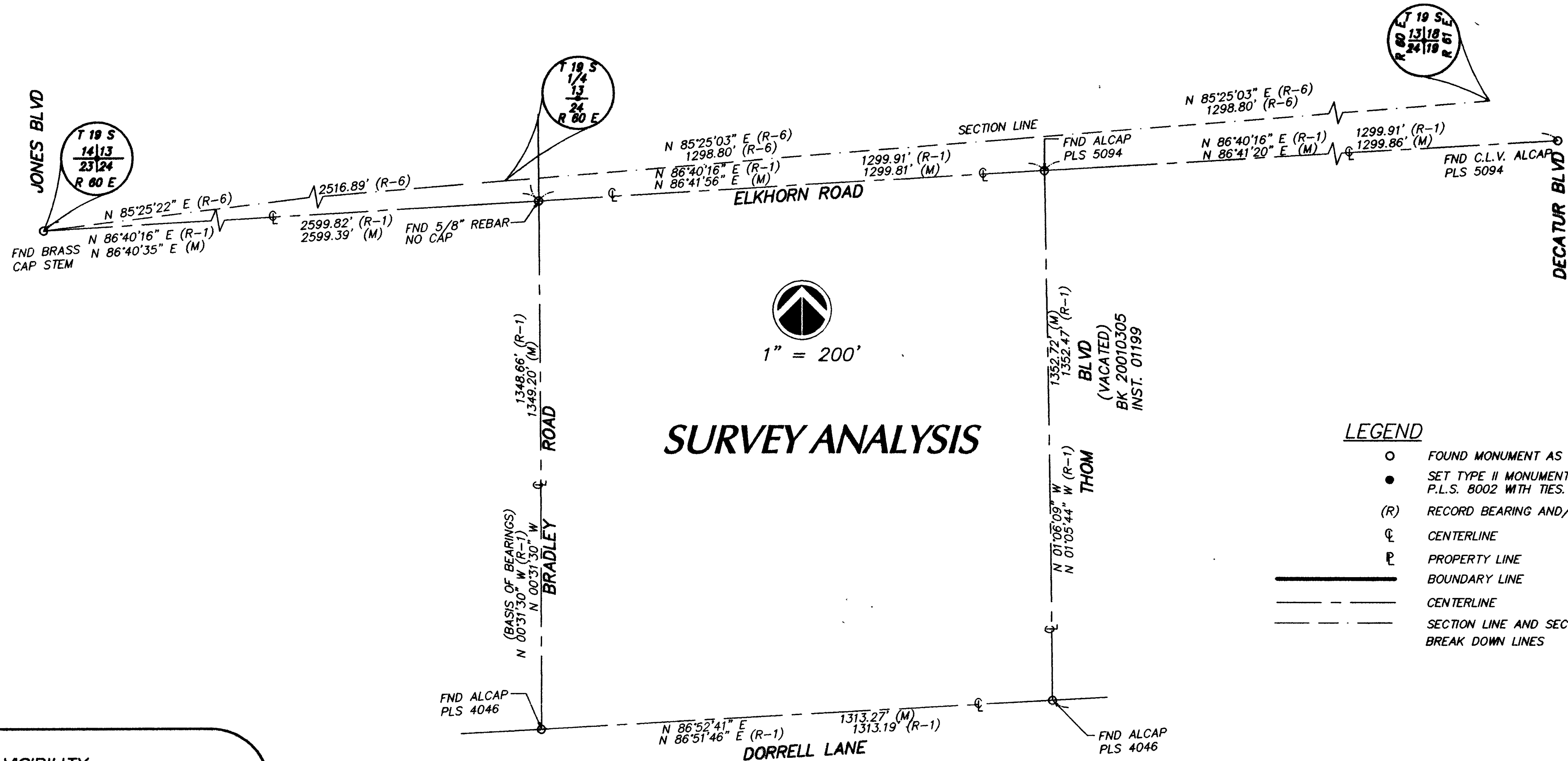
A PORTION OF LOTS 219, 221, 222, AND 224 THROUGH 226 , PER RECORD OF SURVEY  
IN FILE 52, PAGE 70, BEING A PORTION OF THE NORTH HALF ( N 1/2 ) OF SECTION 24,  
TOWNSHIP 19 SOUTH, RANGE 60 EAST, M.D.M., CLARK COUNTY NEVADA.

**BASIS OF BEARINGS**

THE BASIS OF BEARINGS BEING THE CENTERLINE OF BRADLEY ROAD BETWEEN ELKHORN ROAD AND DORRELL LANE WHICH BEARS NORTH 00°31'30" WEST AS SHOWN BY MAP IN THE OFFICE OF THE CLARK COUNTY, NEVADA RECORDER IN FILE 52 OF SURVEYS PAGE 70.

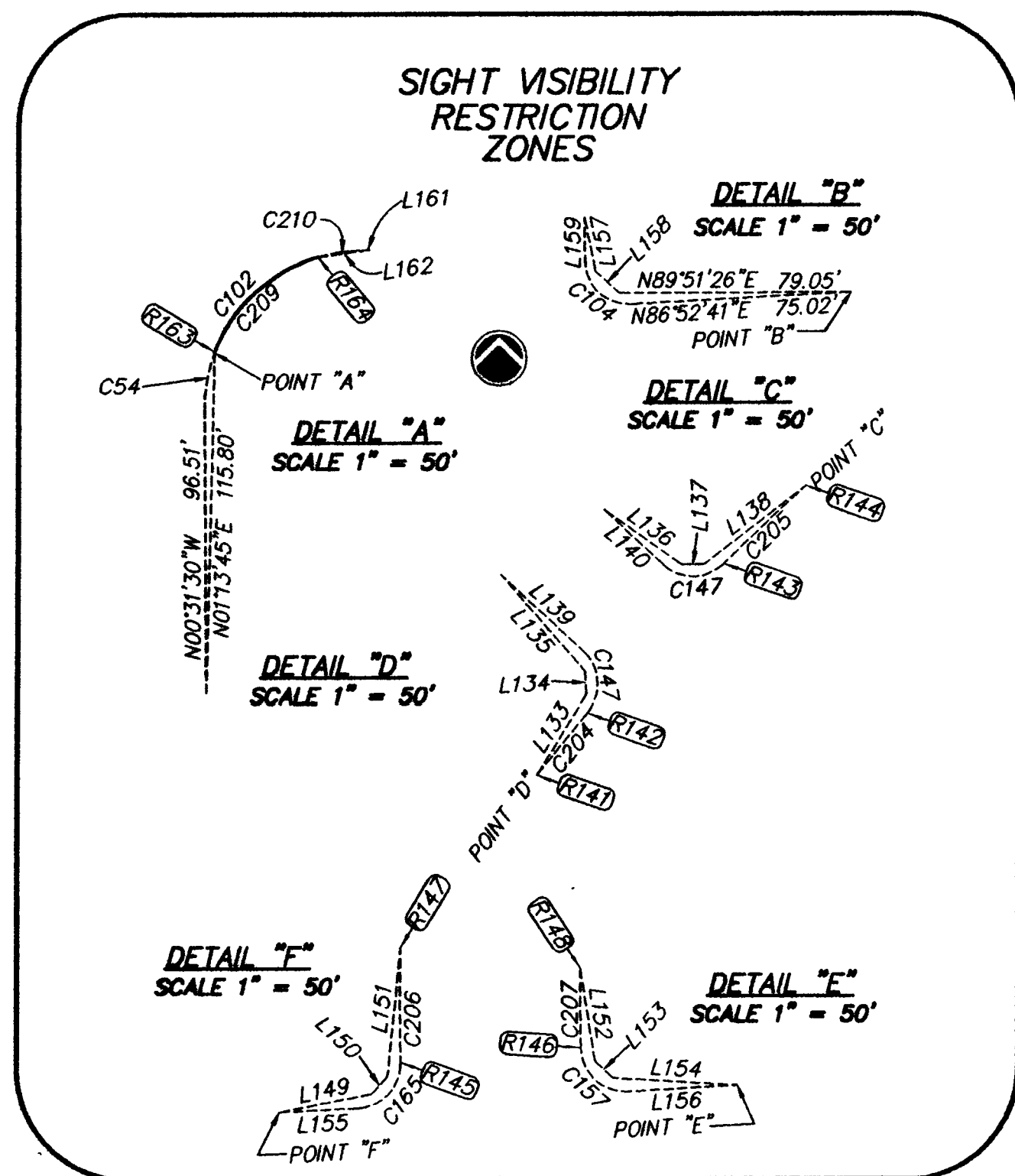
**REFERENCES**

- R-1 R.O.S. FILE 52 PAGE 70
- R-2 PARCEL MAP FILE 56 PAGE 78
- R-3 PARCEL MAP FILE 56 PAGE 79
- R-4 PARCEL MAP FILE 02 PAGE 51
- R-5 PARCEL MAP FILE 03 PAGE 21
- R-6 R.O.S. FILE 57 PAGE 05



**LEGEND**

- FOUND MONUMENT AS NOTED
- SET TYPE II MONUMENT P.L.S. 8002 WITH TIES.
- (R) RECORD BEARING AND/OR DISTANCE
- ⊕ CENTERLINE
- ⊖ PROPERTY LINE
- BOUNDARY LINE
- - - CENTERLINE
- · - · - SECTION LINE AND SECTIONAL BREAK DOWN LINES



**LINE TABLE**

LINE	BEARING	DISTANCE
L68	N86°41'57"E	4.16'
L133	N31°24'20"E	32.17'
L134	N03°42'34"W	7.87'
L135	N41°22'04"W	43.59'
L136	N54°59'08"W	32.29'
L137	N88°54'46"E	7.94'
L138	N52°33'08"E	43.46'
L139	N47°23'54"W	38.55'
L140	N47°23'54"W	27.55'
L149	N78°45'36"E	32.23'
L150	N42°37'0"E	7.89'
L151	N05°41'0"E	43.46'
L152	N09°12'23"W	31.47'
L153	N47°18'32"W	8.22'
L154	N86°39'19"W	42.68'
L155	N86°52'42"E	27.24'
L156	N86°52'42"E	37.74'
L157	N11°27'04"W	18.75'
L158	N46°49'24"W	11.09'
L159	N0°31'30"W	15.02'
L161	N86°41'57"E	5.16'
L162	N81°58'18"E	17.68'

**CURVE TABLE**

CURVE	DELTA	RADIUS	LENGTH	TANGENT
C54	20°52'32"	54.00'	19.67'	9.95'
C102	87°13'26"	54.00'	82.21'	51.45'
C104	92°35'49"	15.00'	24.24'	15.70'
C147	87°22'40"	15.00'	22.88'	14.33'
C157	91°37'33"	15.00'	23.99'	15.43'
C165	88°31'22"	15.00'	23.18'	14.62'
C204	02°05'14"	750.00'	27.32'	13.66'
C205	02°55'45"	750.00'	38.34'	19.18'
C206	02°56'12"	750.00'	38.44'	19.23'
C207	02°08'49"	710.00'	26.61'	13.30'
C209	53°00'33"	54.00'	49.96'	26.93'
C210	13°20'22"	54.00'	12.57'	6.31'

**RADIAL BEARING TABLE**

LINE	BEARING
R141	N52°06'28"W
R142	N50°01'14"W
R143	N44°46'34"W
R144	N41°50'49"W
R145	S88°21'19"W
R146	S88°30'15"W
R147	N88°42'29"W
R148	N89°20'56"W
R163	N69°38'58"W
R164	N16°38'25"W