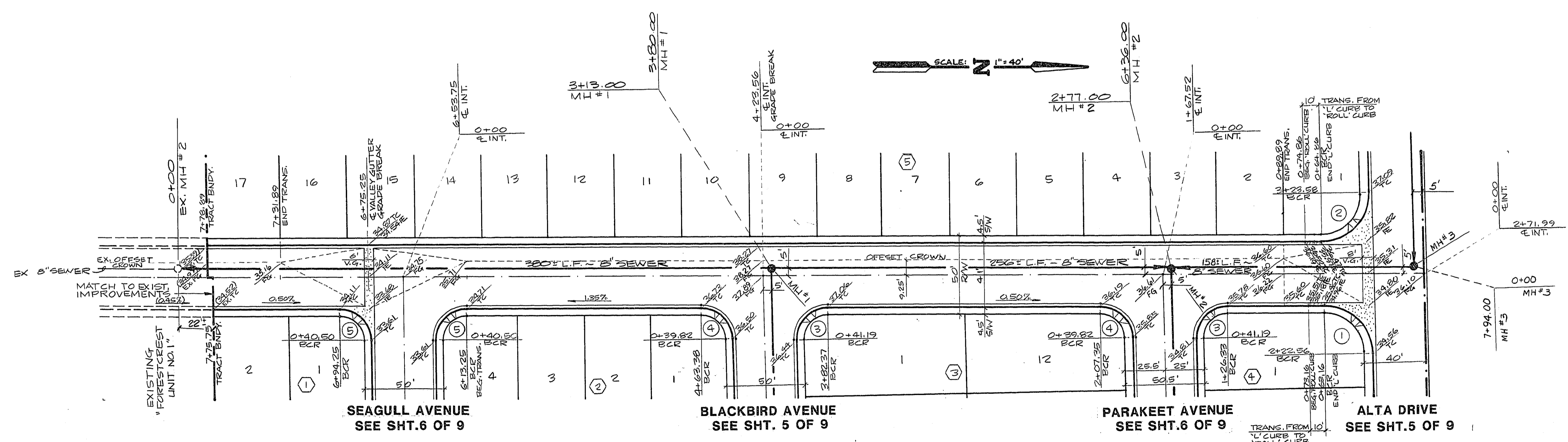


REVISION	BY	DATE	REV
ADDED SEWER TO ALTA DRIVE STATION 7+94.00	T.B.	5/22/86	Δ

ENGINEERS & SURVEYORS  
 INCORPORATED  
 7022 W. CHARLESTON BLVD.  
 LAS VEGAS, NEVADA 89117  
 (702) 363-6415  
 SUBMITTED BY: *Paul E. Valentine*  
 PAUL E. VALENTINE  
 CIVIL ENGINEER  
 NO. 3315



**THRUSH DRIVE**

CURVE DATA TABLE

No.	RADIUS	Δ	L	T
1	30.00'	89° 01' 56"	46.62'	29.50'
2	30.00'	90° 07' 52"	47.62'	30.51'
3	20.00'	90° 58' 02"	31.75'	20.34'
4	20.00'	89° 01' 55"	31.08'	19.67'
5	20.00'	90° 00' 00"	31.42'	20.00'

APPROVAL  
*CLV*  
 CLV CHIEF, FLOOD CONTROL AND LAND DEVELOPMENT  
 DATE 5-18-86

TITLE  
**STREET & SEWER PLAN & PROFILE**  
 (THROUGH DRIVE)

PROJECT  
**FORESTCREST UNIT NO. 2**

WO NO. 3016  
 BY D.R./P.C.  
 DATE 4/86  
 SCALE HORIZ 1"=40'  
 VERT 1"=4'

SHEET  
**4**  
 OF 9 SHEETS