

McDONALD'S AT PECOS RD AND BONANZA RD CIVIL IMPROVEMENT PLANS 3500 E. BONANZA RD LAS VEGAS, NV 89110 APN: 140-30-411-001

BASIS OF BEARINGS

BEING THE CENTERLINE OF PECOS ROAD NORTH 00°04'43" WEST BETWEEN HARRIS AND WASHINGTON AVENUE, AS SHOWN ON RECORD OF SURVEY FILE 67 PAGE 63 AS RECORDED IN THE OFFICIAL RECORDS OF CLARK COUNTY, NEVADA ON AUGUST 19, 1993.

BENCHMARK

BEING RIVET & PLATE IN TOP OF CURB @ NW CORNER OF BONANZA & PECOS NAVD88 ELEVATION OF 1796.73 FEET.

LEGAL DESCRIPTION

BEING LOT 1, AS SHOWN BY MAP THEREOF ON FILE IN BOOK 73, PAGE 31 OF PLATS, IN THE OFFICE OF THE CLARK COUNTY RECORDER, BEING A PORTION OF THE SOUTHWEST QUARTER (SW1/4) OF THE SOUTHWEST QUARTER (SW1/4) OF SECTION 30, TOWNSHIP 20 SOUTH, RANGE 62 EAST, M.D.M., CITY OF LAS VEGAS, CLARK COUNTY, NEVADA.

SURVEY MONUMENTATION NOTE

OWNER RESPONSIBLE TO PROVIDE SURVEY MONUMENTATION AS SHOWN AND TO REPLACE ALL SURVEY MONUMENTATION DAMAGED, DISTURBED, DESTROYED OR OBSCURED DURING CONSTRUCTION.

CAUTION TO CONTRACTOR

THE CONTRACTOR SHALL BE RESPONSIBLE TO INVESTIGATE AND VERIFY THE ACTUAL LOCATION AND DEPTH OF ALL EXISTING UNDERGROUND FACILITIES AT LEAST 48 HOURS IN ADVANCE OF THE PERFORMANCE OF ANY WORK.

APPROVAL OF THESE PLANS BY THE CITY OF HENDERSON IS LIMITED TO THOSE IMPROVEMENTS CONSTRUCTED IN THE DEDICATED RIGHTS-OF-WAY AND/OR DEDICATED EASEMENTS. THIS APPROVAL DOES NOT AUTHORIZE THE CONSTRUCTION OF ANY IMPROVEMENTS THAT DEVIATE FROM ADOPTED STANDARDS AND/OR SPECIFICATIONS EXCEPT THOSE SPECIFICALLY IDENTIFIED AS "DEVIATIONS FROM STANDARDS". THE ENGINEER SHALL RESOLVE ANY DEVIATION OTHER THAN THOSE LISTED IN "DEVIATIONS FROM STANDARDS" IN FAVOR OF THE UNIFORM STANDARD DRAWINGS AND SPECIFICATIONS CLARK COUNTY AREA NEVADA.

THE ENGINEER SHALL CONTACT THE NEVADA DIVISION OF ENVIRONMENTAL PROTECTION (NDEP) TO OBTAIN A NATIONAL POLLUTANT DISCHARGE ELIMINATION SYSTEM (NPDES) PERMIT PRIOR TO CONSTRUCTION. ALL CONSTRUCTION PROJECTS ONE ACRE OR LARGER MUST APPLY FOR THE PERMIT THROUGH NDEP. ALL QUESTIONS REGARDING THE NPDES PERMIT REQUIREMENTS SHOULD BE DIRECTED TO THE NDEP (775) 687-9429.

OWNER/DEVELOPER

GOLDEN ARCH L P
C/O McDONALDS CORPORATION #27-147
P.O. BOX 182571
COLUMBUS, OH 43218-2571
PHONE: (858) 342-3536
FAX: (702) 543-2733

FLOOD ZONE INFORMATION

THIS PROPERTY DOES NOT LIE WITHIN THE SPECIAL FLOOD HAZARD AREAS INUNDATED BY 100 YEAR FLOOD AS ESTABLISHED BY THE NATIONAL FLOOD INSURANCE PROGRAM (NFIP)/FLOOD INSURANCE RATE MAP NUMBER 32003C2186E, DATED SEPTEMBER 27, 2002. THE SUBJECT PROPERTY IS IN FLOOD ZONE X.



VICINITY MAP
NOT TO SCALE

SHEET INDEX

DRAWING NO.	DESCRIPTION
C1	COVER SHEET
C2	GENERAL NOTES
C3	LEGEND & ABBREVIATIONS
C4	DEMOLITION PLAN
C5	HORIZONTAL CONTROL, TRAFFIC SIGNAGE & STRIPING PLAN
C6	GRADING PLAN
C7	CROSS SECTION SHEET
C8	DETAIL SHEET

APPROVALS

CHERI EDELMAN, P.E. # 11514 CITY ENGINEER	DATE
APPROVAL OF THESE PLANS IS LIMITED TO THOSE IMPROVEMENTS CONSTRUCTED IN THE DEDICATED RIGHTS-OF-WAY AND/OR DEDICATED EASEMENTS. THIS APPROVAL DOES NOT AUTHORIZE THE CONSTRUCTION OF ANY IMPROVEMENTS THAT DEVIATE FROM ADOPTED STANDARDS AND/OR SPECIFICATIONS, EXCEPT THOSE SPECIFICALLY LISTED UNDER DEVIATIONS FROM STANDARD. THE ENGINEER SHALL RESOLVE ANY DEVIATION OTHER THAN THOSE LISTED IN DEVIATIONS FROM STANDARDS IN FAVOR OF THE UNIFORM STANDARD DRAWINGS AND SPECIFICATIONS CLARK COUNTY AREA NEVADA.	
DOUG RANKIN, AICP - PLANNING MANAGER	DATE
THIS PLAN MEETS THE APPLICABLE STANDARDS OF THE PLANNING AND DEVELOPMENT DEPARTMENT.	
CITY FIRE MARSHAL	DATE
NEVADA POWER COMPANY DBA NV ENERGY	DATE
NV ENERGY ACKNOWLEDGES THAT WE HAVE RECEIVED YOUR PLANS AND WILL PROVIDE SERVICE TO ALL ELECTRICAL NEEDS ASSOCIATED WITH THIS PROJECT. NEVADA POWER COMPANY RESERVES THE RIGHT TO ADDRESS ANY EXISTING OR FUTURE CONFLICTS ONCE THE FINAL DESIGN IS COMPLETED. THE NEW SERVICE AND THE RESOLUTION OF ANY CONFLICTS WILL BE ACCOMPLISHED PURSUANT TO THE NEVADA PUBLIC UTILITY COMMISSION'S RULES AND REGULATIONS.	
CENTURYLINK	DATE
THE AFFIXED CENTURYLINK APPROVAL DOES NOT ASSUME OR GUARANTEE LIABILITY FOR KNOWN OR UNKNOWN CONFLICTS WITH EXISTING OR PROPOSED IMPROVEMENTS. RESOLUTION OF ANY CONFLICT WILL BE ACCOMPLISHED PURSUANT TO LOCAL ORDINANCES, NEVADA REVISED STATUTES AND/OR PUBLIC UTILITY COMMISSION RULES AND REGULATIONS.	
COX COMMUNICATIONS, LAS VEGAS INC.	DATE
SOUTHWEST GAS CORPORATION	DATE

This grading plan is a part of drainage study # 4532 which was received on 7/19/11 and App'd on 7/26/11. Page 1 of 7

ENGINEER'S SEAL
I HEREBY CERTIFY THAT THIS PLAN, SPECIFICATION, OR REPORT WAS PREPARED BY ME OR UNDER MY DIRECT SUPERVISION, AND THAT I AM A LICENSED PROFESSIONAL ENGINEER UNDER THE LAWS OF THE STATE OF NEVADA.

License # 14985
Date: _____

CLV# XXXXX

REV.	DESCRIPTION	APPROV. BY	DATE

REVISIONS

DEVELOPER
SPECTRUM SURVEYING & ENGINEERING
8905 W POST ROAD, SUITE 100
LAS VEGAS, NEVADA 89148
PHONE: (702) 367-7705
FAX: (702) 367-8733

McDONALD'S CORPORATION
THESE DRAWINGS AND SPECIFICATIONS ARE THE CONFIDENTIAL AND PROPRIETARY PROPERTY OF McDONALD'S CORPORATION AND SHALL REMAIN THE PROPERTY OF McDONALD'S CORPORATION. NO PART OF THESE DRAWINGS OR SPECIFICATIONS SHALL BE REPRODUCED, COPIED, OR TRANSMITTED IN ANY FORM OR BY ANY MEANS, ELECTRONIC OR MECHANICAL, INCLUDING PHOTOCOPYING, RECORDING, OR BY ANY INFORMATION STORAGE AND RETRIEVAL SYSTEM, WITHOUT THE WRITTEN PERMISSION OF McDONALD'S CORPORATION. ANY UNAUTHORIZED REPRODUCTION OR USE OF THESE DRAWINGS OR SPECIFICATIONS SHALL BE AT THE USER'S SOLE RISK AND WITHOUT LIABILITY TO McDONALD'S CORPORATION.

McDONALD'S AT PECOS RD AND BONANZA RD
COVER SHEET
APN: 140-30-411-001
3500 E. BONANZA ROAD
LAS VEGAS, NV 89110
CITY OF LAS VEGAS

DATE:	07/14/11
JOB NO:	CD11021
DRAWN BY:	MCRP
CHECKED BY:	RAS
SCALE:	NONE
C1	SHEET 1 OF 8

CALL BEFORE YOU DIG

1-702-227-2929

Call before you Dig

1-800-227-2600

UNDERGROUNDS

1-702-455-7811

Call before you Dig

1-702-227-6611

ABBREVIATIONS

ABAN	ABANDON	IN	INCH
AB	AGGREGATE BASE	INSTR	INSTRUMENT
ABS	ABSOLUTE	INT	INTERIOR
AC	ASPHALTIC CONCRETE	INV	INVERT
ACKV	AUTOMATIC CHECK VALVE	IRR	IRRIGATION
ADA	AMERICAN DISABILITY ACT	LEN OR L	LENGTH OF CURVATURE
ADDL	ADDITIONAL	LF	LINEAR FOOT
ADDM	ADDDUM	LT	LEFT/LIGHT
ADJ	ADJUSTABLE	LVMWD	LAS VEGAS VALLEY WATER DISTRICT
AGG	AGGREGATE	M	METER
AL	ALUMINUM	MAX	MAXIMUM
AMT	AMOUNT	N	NORTH
&	AND	NAP	NOT-A-PART
ANSI	AMERICAN NATIONAL STANDARDS INSTITUTE	NDOT	NEVADA DEPARTMENT OF TRANSPORTATION
APN	ASSESSOR PARCEL NUMBER	NE	NORTHEAST
APPROX	APPROXIMATE	NG	NATURAL GROUND
APPRVD	APPROVED	NO. #	NUMBER
ASPH	ASPHALT	NPC	NEVADA POWER COMPANY
ASSN	ASSOCIATION	NTS	NOT TO SCALE
ASSY	ASSEMBLY	NW	NORTHWEST
ASTM	AMERICAN SOCIETY OF TESTING MATERIALS	MH	MANHOLE
AVE	AVENUE	MIN	MINIMUM
AWWA	AMERICAN WATER WORKS ASSOCIATION	OHP	OVER HEAD POWER
BC	BOLT CIRCLE/BACK OF CURB	OHTEL	OVER HEAD TELEPHONE
BCR	BACK OF CURB RADIUS	P	POLE/PRESSURE/PIPE/POWER
BDRY LINE	BOUNDARY LINE	P/L / R	PROPERTY LINE
BETW	BETWEEN	PERP	PERPENDICULAR
BK	BOOK/BACK	PG	PRESSURE GAUGE
BLDG	BUILDING	PKWY	PARKWAY
BLK	BLOCK	PSI	POUNDS PER SQUARE INCH
BLM	BUREAU OF LAND MANAGEMENT	PVC	POLYVINYL CHLORIDE PIPE
BLVD	BOULEVARD	QTY	QUANTITY
BM	BENCHMARK	R	RADIUS
BO	BLOW OFF ASSEMBLY	(R)	RADIAL
BOC	BACK OF CURB	RPDA	REDUCED PRESSURE DETECTOR ASSEMBLY
BOT	BOTTOM	RPPA	REDUCED PRESSURE PRINCIPLE ASSEMBLY
BOW	BACK OF WALK	RR	RAILROAD
BPV	BACK PRESSURE VALVE	ROW	RIGHT OF WAY
BRG	BEARING	S/C	SAW CUT
BS	BACK SIGHT	SD	STORM DRAIN
BVC	BEGINNING OF VERTICAL CURVE	SOWK	SIDEWALK
BW	BACK OF SIDEWALK	SE	SOUTHEAST
C	CONDUIT	SEC	SECTION/SECOND(ARY)
C&G	CURB & GUTTER	SHT	SHEET
CAP	CAPACITY	SIG	SIGNAL
CAV	COMBINATION AIR VALVE	SQ FT	SQUARE FOOT (FEET)
CC	CLARK COUNTY	SQ YD	SQUARE YARD
CCWRD	CLARK COUNTY WATER RECLAMATION DISTRICT	SS	SANITARY SEWER
CI	CAST IRON	ST	STREET
CIP	CAST IRON PIPE/CAST IN PLACE	STA	STATION
CIR	CIRCLE	STD	STANDARD
CIRCUM	CIRCUMFERENCE	STLT	STREET LIGHT
CL OR C	CENTERLINE	SUR	SURVEY
CO	COUNTY/COMPANY/CONTRACT	T	TELEPHONE/TANGENT
COL	COLUMN	TAN	TANGENT
CONC	CONCRETE	TC	TOP OF CURB
CONST	CONSTRUCTION	TF	TOP OF FOOTING
COR	CORNER	TMH	TOP OF MANHOLE
CONC	CONCRETE	TRW	TOP OF RETAINING WALL
CONN	CONNECTION	TOT	TOTAL
CONT	CONTINUE OR CONTINUOUS	TW	TOP OF WALL
CTR	CENTER	TRANS	TRANSITION/TRANSMISSION
CU	CUBIC	(TYP)	TYPICAL
CY	CUBIC YARD	UDACS	UNIFORM DESIGN AND CONSTRUCTION STANDARDS
D OR Δ	DELTA ANGLE	USD	UNIFORM STANDARD DRAWINGS
D/W	DRIVEWAY	VC	VERTICAL CURVE
DCSWCS	DESIGN AND CONSTRUCTION STANDARDS FOR WASTE WATER COLLECTION SYSTEMS	VERT	VERTICAL
DEMO	DEMOLITION	VG	VALLEY GUTTER
DEPT	DEPARTMENT	W/	WITH
DET	DETAIL	WM	WATER METER
DEV	DEVELOPMENT	W	WATER
DI	DROP INLET OR DUCTILE IRON	WV	WATER VALVE
DIA OR Ø	DIAMETER	YD	YARD
DM	DIMENSION		
DIP	DUCTILE IRON PIPE		
DIR	DIRECTION		
DIST	DISTANCE		
DMH	DROP MANHOLE		
DR	DRIVE		
DWG	DRAWING		
DWY	DRIVEWAY		
E	EAST		
EC	EXISTING CONCRETE		
EOR	END OF CURVE RETURN		
EOC	END OF CURVE		
EOP	EDGE OF PAVEMENT		
EOS	EDGE OF SHOULDER		
ESMT	EASEMENT		
EVC	END OF VERTICAL CURVE		
EX	EXISTING		
FC	FACE OF CURB		
FF	FINISHED FLOOR		
FG	FINISHED GRADE		
FH	FIRE HYDRANT		
FL OR ¶	FLOW LINE		
FN	FENCE		
FW	FACE OF WALL		
FSTNR	FASTENER		
FT	FOOT OR FEET		
FUT	FUTURE		
GM	GAS METER		
GPM	GALLONS PER MINUTE		
GRD	GRADE		
GRT	GRATE		
GUT	GUTTER		
GV	GATE VALVE		

NOTE:
THIS IS A STANDARD ABBREVIATION SHEET.
SOME ABBREVIATIONS MAY APPEAR ON THIS SHEET
BUT NOT USED IN THE PLANS. ALL ABBREVIATIONS
USED ON THE PLANS MUST APPEAR ON THIS SHEET.

UTILITY

WATER PIPELINE	W
BLOWOFF	☩
COMBINATION AIR VALVE	☩
REDUCER	☩
WATER VALVE	☩
FIRE HYDRANT ASSEMBLY	☩
WATER METER	☩
SANITARY SEWER MANHOLE	☩
STREET LIGHT (GENERIC SYMBOL NOT RELATED TO WATTAGE)	☩
ELECTRICAL BOX	☩
ELECTRICAL PANEL BOX	☩
CABLE TV	☩
GAS LINE	☩
SANITARY SEWER	☩
UNDERGROUND POWER	☩
UNDERGROUND TELEPHONE	☩
VALVE (INITIALS INDICATE OWNERSHIP AND/ OR TYPE)	☩
UTILITY BOX (INITIALS INDICATE OWNER AND / OR TYPE)	☩
UTILITY STUB-OUT	☩
TRAFFIC CONTROL SIGN	☩
100 W LUMINAIRE	☩
150 W LUMINAIRE	☩
200 W LUMINAIRE	☩
250 W LUMINAIRE	☩
400 W LUMINAIRE	☩
750 W LUMINAIRE	☩
TRAFFIC SIGNAL POLE	☩
GATE VALVE	☩
DOUBLE CHECK DETECTOR ASSEMBLY (DCDA)	☩
REDUCED PRESSURE DETECTOR ASSEMBLY (RPDA)	☩

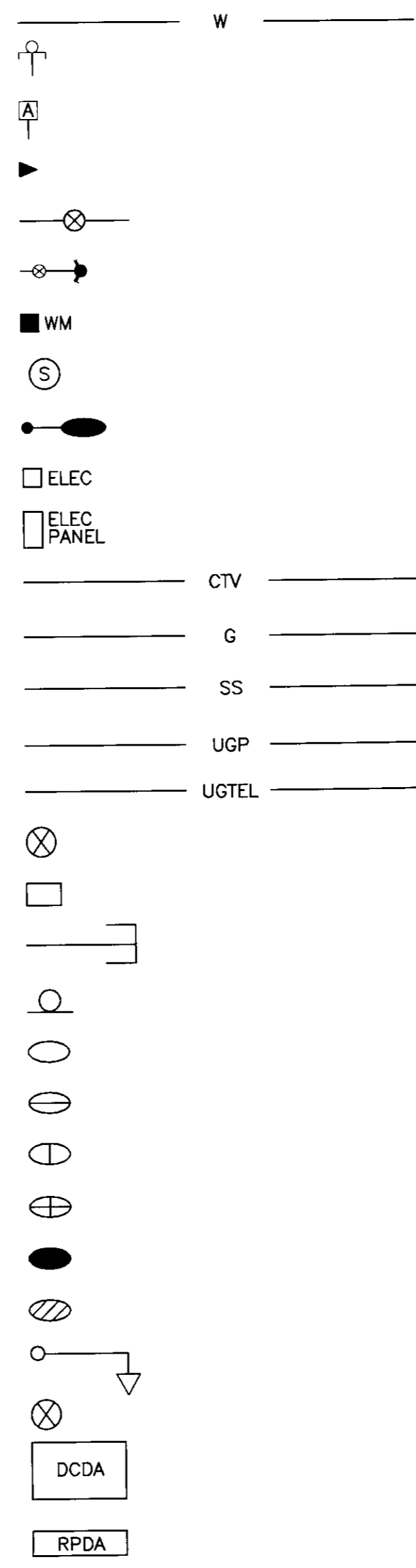
GEOMETRIC

EDGE OF PAVEMENT	☩
FENCE	☩
CURB, GUTTER AND SIDEWALK	☩
CENTER LINE	☩
BLOCK WALL/RETAINING WALL	☩
SCREEN WALL	☩
STREET NAME SIGN	☩
DRIVEWAY	☩

SURVEY

SURVEY MONUMENT	☩
PROPERTY LINE	☩
RIGHT-OF-WAY LINE	☩
PATENT RESERVATION OR EASEMENT LINE	☩
SECTION LINE	☩
CONCRETE MONUMENT	☩
CONCRETE MONUMENT SURVEY LINE	☩

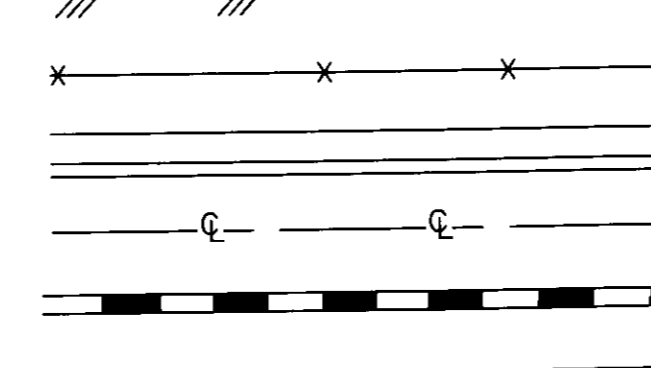
PROPOSED



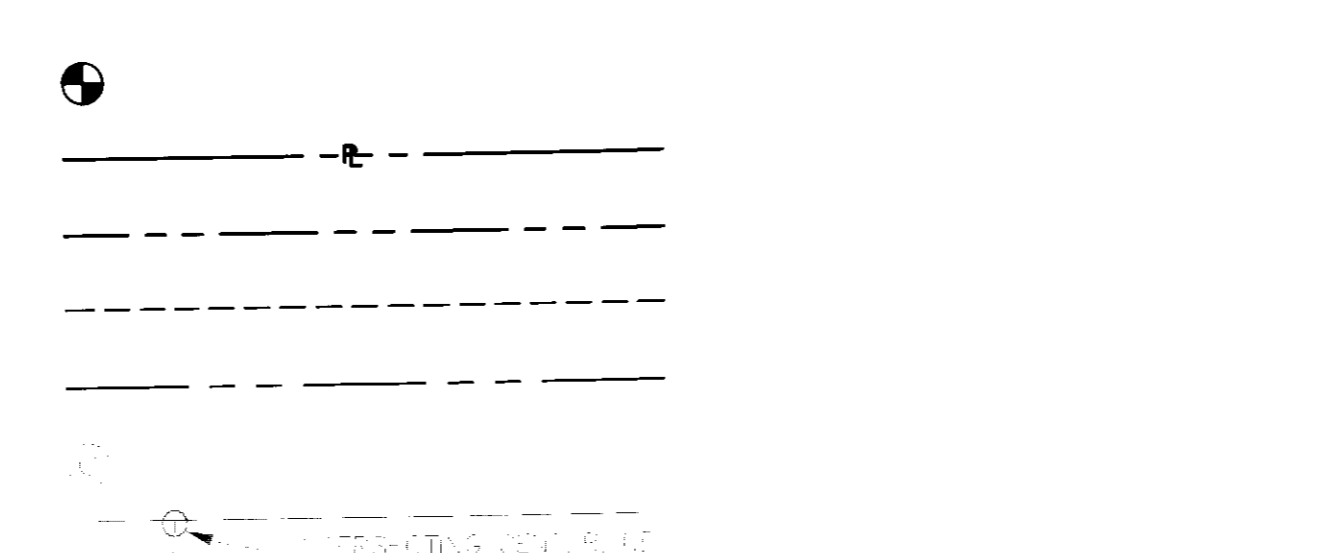
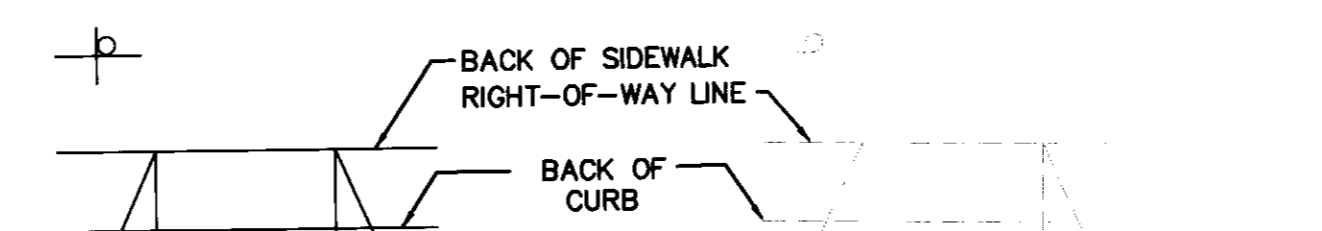
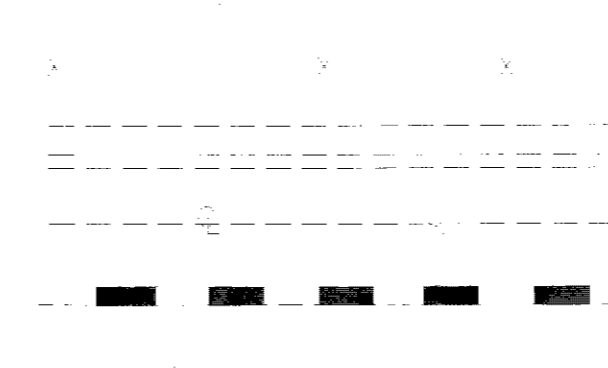
EXISTING



PROPOSED



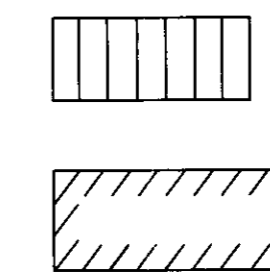
EXISTING



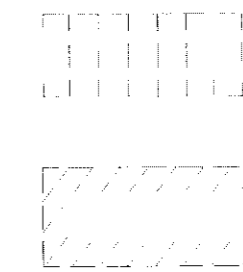
SITE PLAN

STEPS (NOTE TYPE AND NO. OF RISERS)

PROPOSED

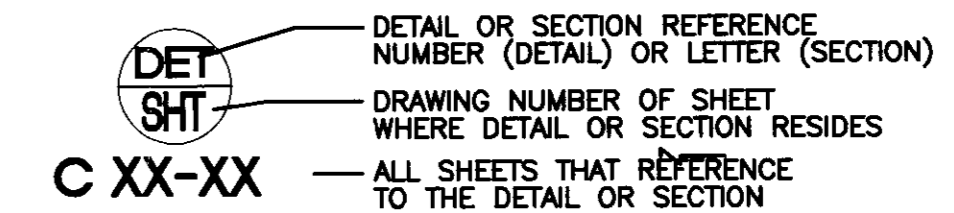


EXISTING



MISCELLANEOUS

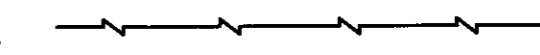
REFERENCE BUBBLE



IDENTIFICATION HEXAGON



SAW CUT LINE-ASPHALT CONC. OR PCC CONC.



DRAINAGE / GRADING

PROPOSED

EXISTING

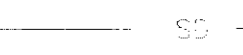
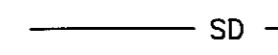
STORM DRAIN MANHOLE (SIZE AS NOTED PER PLAN)



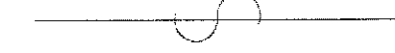
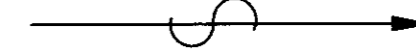
CONTOURS



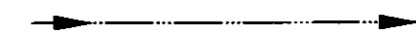
STORM DRAIN (SIZE AS NOTED PER PLAN)



DIRECTION OF FLOW



FLOW LINE OF DITCH OR CHANNEL



DROP INLET



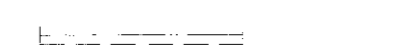
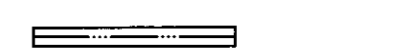
ELEVATIONS



CUT OR FILL SLOPES



VALLEY GUTTER



SPECIAL SURVEY LEGEND & ABBREVIATIONS

W	WATER PULLBOX/METER/SHUT OFF
E	ELECTRIC PULLBOX/METER/TRANSFORMER
T	TELEPHONE PULLBOX/HANDHOLE
FO	FIBER OPTIC PULLBOX/HANDHOLE
SL	SIGNAL LIGHT PULLBOX/HANDHOLE
TS	TRAFFIC SIGNAL PULLBOX/HANDHOLE
ICV	IRRIGATION CONTROL VALVE
SS	SANITARY SEWER PULLBOX/HANDHOLE
C	CATV PULLBOX/HANDHOLE
AL	AREA LIGHT PULLBOX/HANDHOLE
RB	RED BOX DVD RENTAL KIOSK

☩	FIRE HYDRANT
☩	WATER VALVE
☩	GAS METER
☩	SEWER MANHOLE
☩	GAS VALVE
☩	SEWER CLEANOUT
☩	AREA LIGHT
☩	STREET LIGHT
☩	SIGN
☩	INTERCEPTOR MANHOLE
☩	TILE WALKWAY
☩	DESERT LANDSCAPE AREA
☩	8" CONCRETE BOLLARD
☩	TRAFFIC SIGNAL POLE
☩	AREA LIGHT
☩	STORM MANHOLE
☩	SHRUB
☩	FLOWERS/PLANT
☩	TREE
☩	PALM TREE
☩	BUILDING COLUMN
☩	TRASH CAN

REVISIONS	DESCRIPTION	APP'D BY	DATE

SPECTRUM
SURVEYING & ENGINEERING
8905 W POST ROAD, SUITE 100
LAS VEGAS, NEVADA 89148
OFFICE: (702) 367-7705
FAX: (702) 367-8733

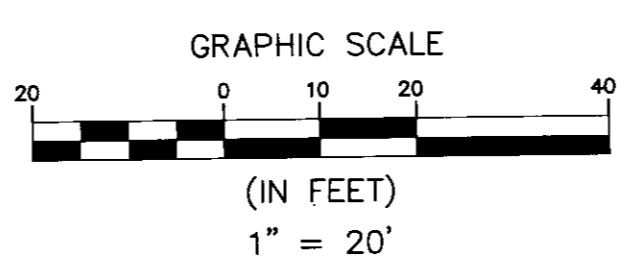
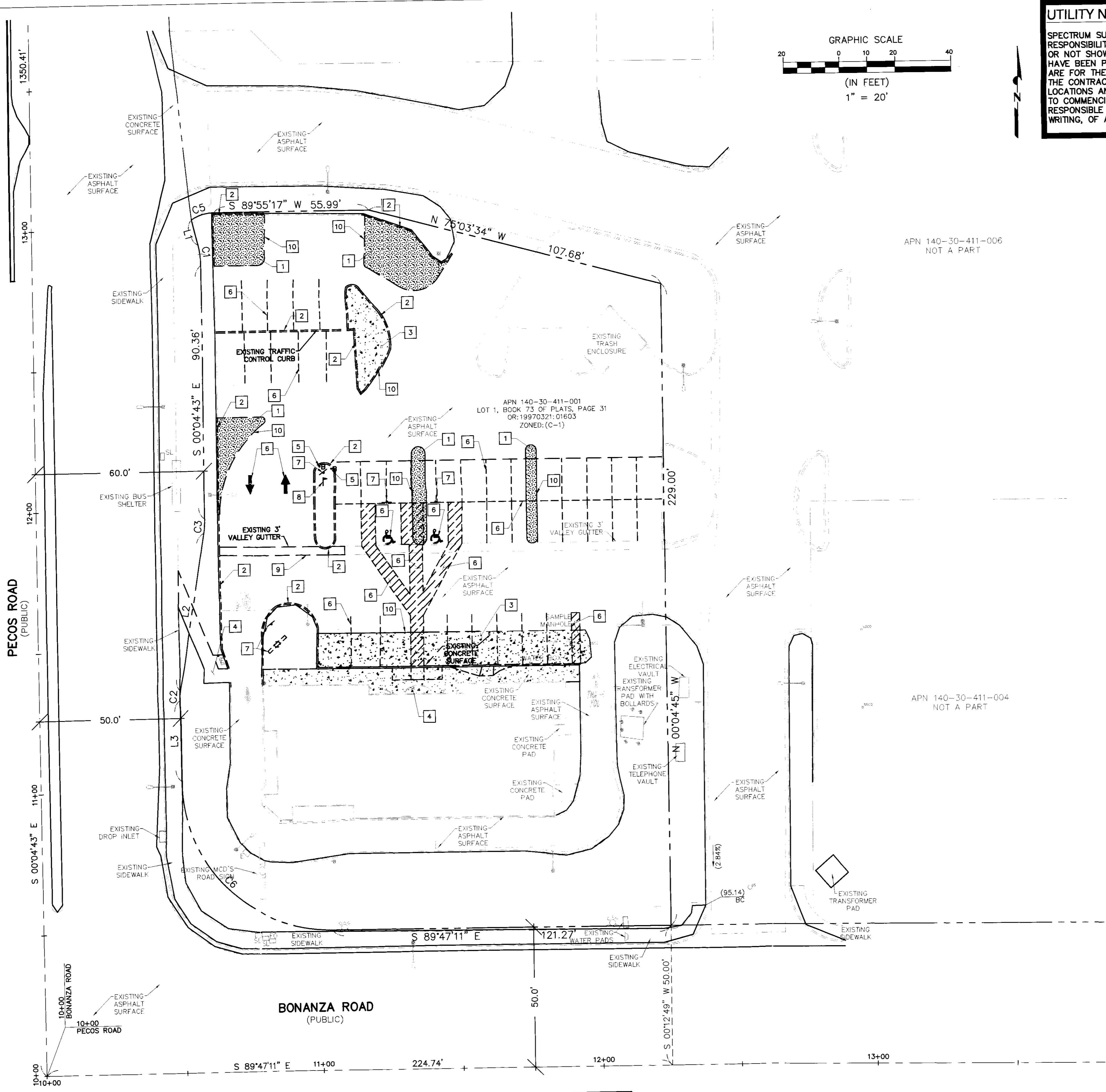
McDONALD'S CORPORATION
THESE DRAWINGS AND SPECIFICATIONS ARE THE CONFIDENTIAL AND PROPRIETARY PROPERTY OF Mc DONALD'S CORPORATION. NO REPRODUCTION OR REUSE OF THESE DRAWINGS OR SPECIFICATIONS IS PERMITTED WITHOUT WRITTEN AUTHORIZATION FROM Mc DONALD'S CORPORATION. THE CONTRACT DOCUMENTS WERE PREPARED FOR USE ON THE DATE AND ARE NOT SUITABLE FOR USE ON A DIFFERENT SITE OR AT A LATER TIME. USE OF THESE DRAWINGS OR SPECIFICATIONS WITHOUT THE WRITTEN CONSENT OF Mc DONALD'S CORPORATION MAY BE SUBJECT TO LEGAL ACTION. ARCHITECTS AND ENGINEERS: REPRODUCTION OF THE CONTRACT DOCUMENTS FOR REUSE ON ANOTHER PROJECT IS NOT AUTHORIZED.

McDONALD'S AT PECOS ROAD AND BONANZA ROAD
LEGEND & ABBREVIATIONS
APN: 140-30-411-001
3600 E. BONANZA RD
LAS VEGAS, NV 89110
CITY OF LAS VEGAS

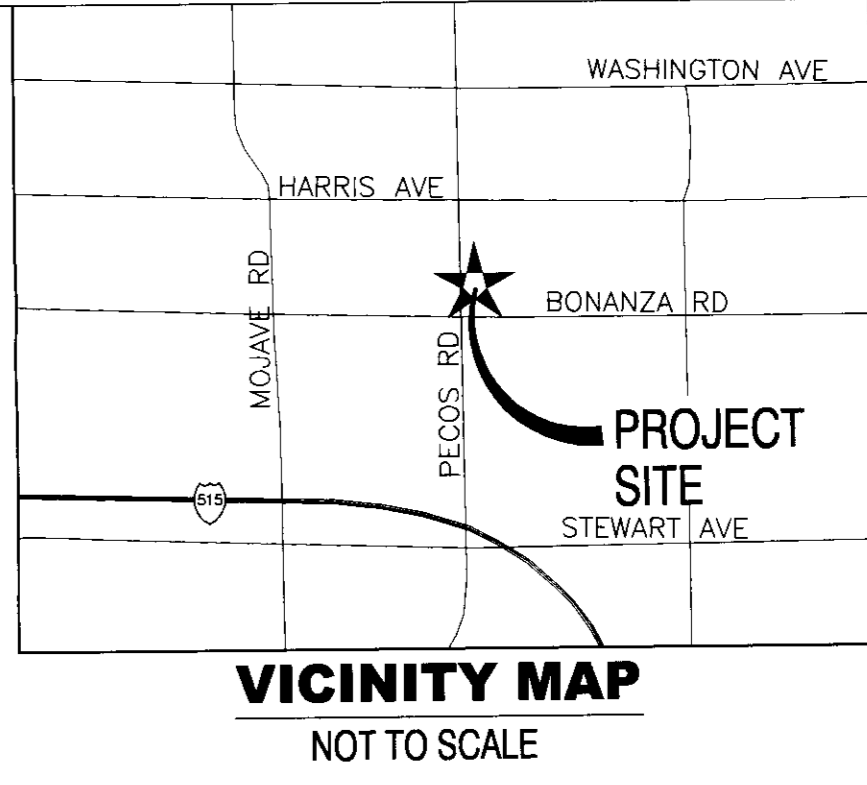
ENGINEER'S SEAL
RANDOLPH A. SKORPINSKI
CIVIL
EXP: 06-30-12
NO. 14885

DATE:	07/14/11
JOB NO:	CD11021
DRAWN BY:	MCRP
CHECKED BY:	RAS
SCALE:	NONE
C3	SHEET 3 OF 8
CLV# XXXXX	

This grading plan is a part of drainage study # 4532 which was received on 7/14/11 and App'd on 7/26/11. Page 3 of 7



UTILITY NOTE
 SPECTRUM SURVEYING & ENGINEERING ASSUMES NO RESPONSIBILITY FOR EXISTING UTILITY LOCATIONS, SHOWN OR NOT SHOWN. THE UTILITIES SHOWN ON THIS DRAWING HAVE BEEN PLOTTED FROM RECORD INFORMATION AND ARE FOR THE CONVENIENCE OF THE CONTRACTOR ONLY. THE CONTRACTOR IS RESPONSIBLE TO FIELD VERIFY THE LOCATIONS AND DEPTHS OF ALL RELEVANT UTILITIES PRIOR TO COMMENCING WITH CONSTRUCTION. THE CONTRACTOR IS RESPONSIBLE TO NOTIFY THE ENGINEER OF WORK, IN WRITING, OF ANY CONFLICTS OR DISCREPANCIES.



SITE DEMOLITION NOTES

- 1 REMOVE EXISTING AC PAVEMENT
- 2 REMOVE EXISTING CURB
- 3 REMOVE EXISTING CONCRETE PAVEMENT
- 4 REMOVE EXISTING CONCRETE SIDEWALK/WALKWAY
- 5 REMOVE EXISTING BOLLARD
- 6 OBLITERATE EXISTING PAVEMENT MARKINGS
- 7 REMOVE EXISTING SIGN AND FOUNDATION
- 8 REMOVE EXISTING FLAGPOLE
- 9 REMOVE EXISTING 3' VALLEY GUTTER
- 10 SAWCUT AND MATCH EXISTING

BASIS OF BEARINGS

BEING THE CENTERLINE OF PECOS ROAD NORTH 00°04'43" WEST BETWEEN HARRIS AND WASHINGTON AVENUE, AS SHOWN ON RECORD OF SURVEY FILE 67 PAGE 63 AS RECORDED IN THE OFFICIAL RECORDS OF CLARK COUNTY, NEVADA ON AUGUST 19, 1993.

BENCHMARK

BEING RIVET & PLATE IN TOP OF CURB @ NW CORNER OF BONANZA & PECOS NAVD88 ELEVATION OF 1796.73 FEET.

LEGAL DESCRIPTION

BEING LOT 1, AS SHOWN BY MAP THEREOF ON FILE IN BOOK 73, PAGE 31 OF PLATS, IN THE OFFICE OF THE CLARK COUNTY RECORDER, BEING A PORTION OF THE SOUTHWEST QUARTER (SW1/4) OF THE SOUTHWEST QUARTER (SW1/4) OF SECTION 30, TOWNSHIP 20 SOUTH, RANGE 62 EAST, M.D.M., CITY OF LAS VEGAS, CLARK COUNTY, NEVADA.

IRRIGATION SYSTEM NOTE:

ALL IRRIGATION FEATURES SUCH AS CONTROL VALVES, IRRIGATION BOXES, SPRINKLER HEADS, SPRINKLER LINES, ELECTRICAL LINES, AND OTHER IRRIGATION APPURTANCES THAT ARE IN CONFLICT WITH THESE PROPOSED IMPROVEMENTS SHALL BE REMOVED AND RELOCATED IN A MANNER NECESSARY FOR PROPER OPERATION OF THE EXISTING IRRIGATION SYSTEM.

LANDSCAPE NOTE:

REMOVE ALL EXISTING LANDSCAPE FEATURES SUCH AS TREES, SHRUBS, GRASS, DECORATIVE ROCK, TREE WELLS, ETC IN CONFLICT WITH PROPOSED IMPROVEMENTS. REFER TO ARCHITECTURAL LANDSCAPE PLAN.

UTILITY NOTE

SPECTRUM ASSUMES NO RESPONSIBILITY FOR THE ACCURACY OF LOCATIONS AND ELEVATIONS OF UTILITIES INDICATED ON THIS MAP, INCLUDING UNDERGROUND LINES, ABOVE GROUND STRUCTURES, AND EXISTING UTILITIES NOT INDICATED OR NOT OF RECORD. LOCATIONS OF UTILITIES HAS BEEN DETERMINED BY SURFACE INDICATIONS AND THE BEST INFORMATION AVAILABLE FROM UTILITY COMPANIES.

THE CONTRACTOR IS RESPONSIBLE FOR FIELD VERIFICATION OF ALL UTILITY LOCATIONS AND ELEVATIONS PRIOR TO BEGINNING EXCAVATION OR CONSTRUCTION OF ANY KIND. IF DISCREPANCIES IN UTILITY LOCATIONS ARE DISCOVERED DURING FIELD VERIFICATION, THE CONTRACTOR MUST IMMEDIATELY NOTIFY SPECTRUM.

THE CONTRACTOR IS RESPONSIBLE FOR TAKING ALL APPROPRIATE PRECAUTIONARY MEASURES TO PROTECT UTILITY LINES AND STRUCTURES BEFORE BEGINNING EXCAVATION. THE CONTRACTOR SHALL ENSURE THAT ALL UTILITIES ARE PROTECTED DURING OPERATION OF THE EXISTING IRRIGATION SYSTEM.

NOTE: THESE PLANS SHALL NOT BE USED FOR CONSTRUCTION UNTIL APPROVED AND SIGNED BY THE GOVERNING ENGINEER TO BE NOTIFIED OF ANY DISCREPANCIES IMMEDIATELY.

part of drainage study
 on 7/19/11 and App'd
 7/26/11
 Call before you Dig
 1-800-227-2600

REV.	DESCRIPTION	APPROV. BY	DATE

SPECTRUM SURVEYING & ENGINEERING
 8905 W POST ROAD, SUITE 100
 LAS VEGAS, NEVADA 89148
 OFFICE: (702) 367-7705
 FAX: (702) 367-8733

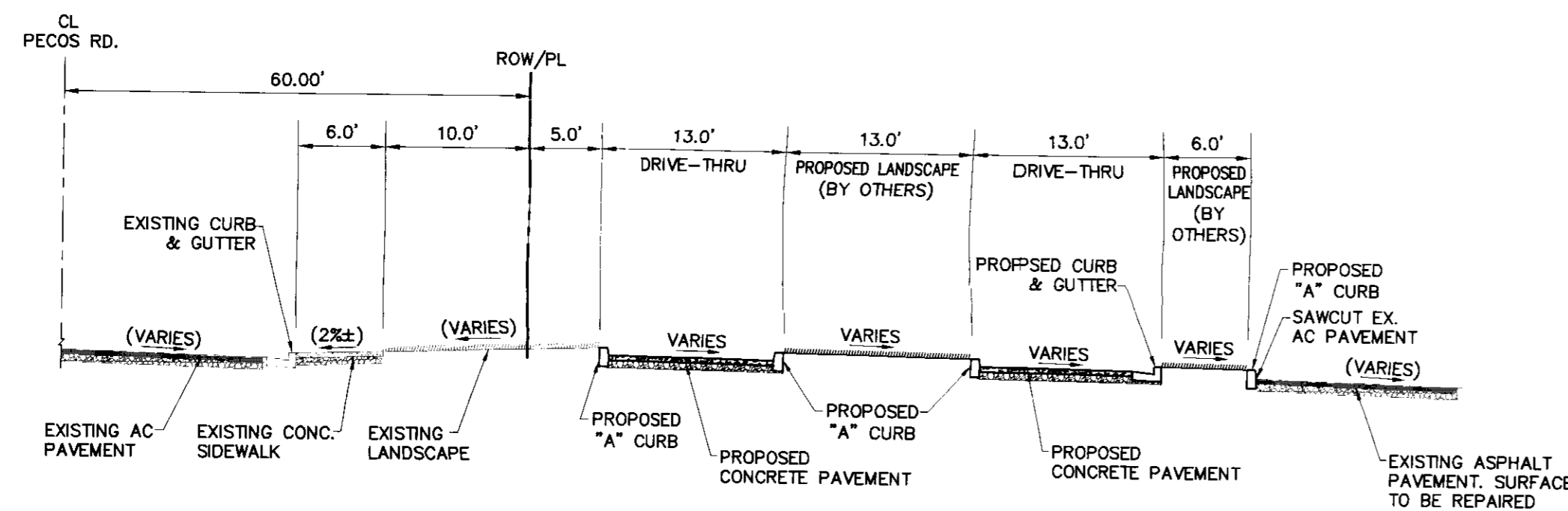
DEVELOPER
McDONALDS USA, LLC
 SOUTH ULSTER ST., SUITE 1300
 DENVER CO, 80237
 PHONE: (858) 942-3536
 FAX: (702) 548-2733

McDONALD'S CORPORATION
 THE CONCEPT AND PROPRIETARY PROPERTY OF
 McDONALD'S CORPORATION AND SHALL NOT BE COPIED OR REPRODUCED WITHOUT WRITTEN PERMISSION FOR USE ON THIS SPECIFIC SITE IN CONNECTION WITH ITS ISSUE DATE AND ARE NOT SUITABLE FOR USE ON A DIFFERENT PROJECT OR FOR REFERENCE OR EXAMPLE ON ANOTHER PROJECT. THE SERVICES OF PROPERLY LICENSED CONTRACT DOCUMENTS FOR REUSE ON ANOTHER PROJECT IS NOT AUTHORIZED.

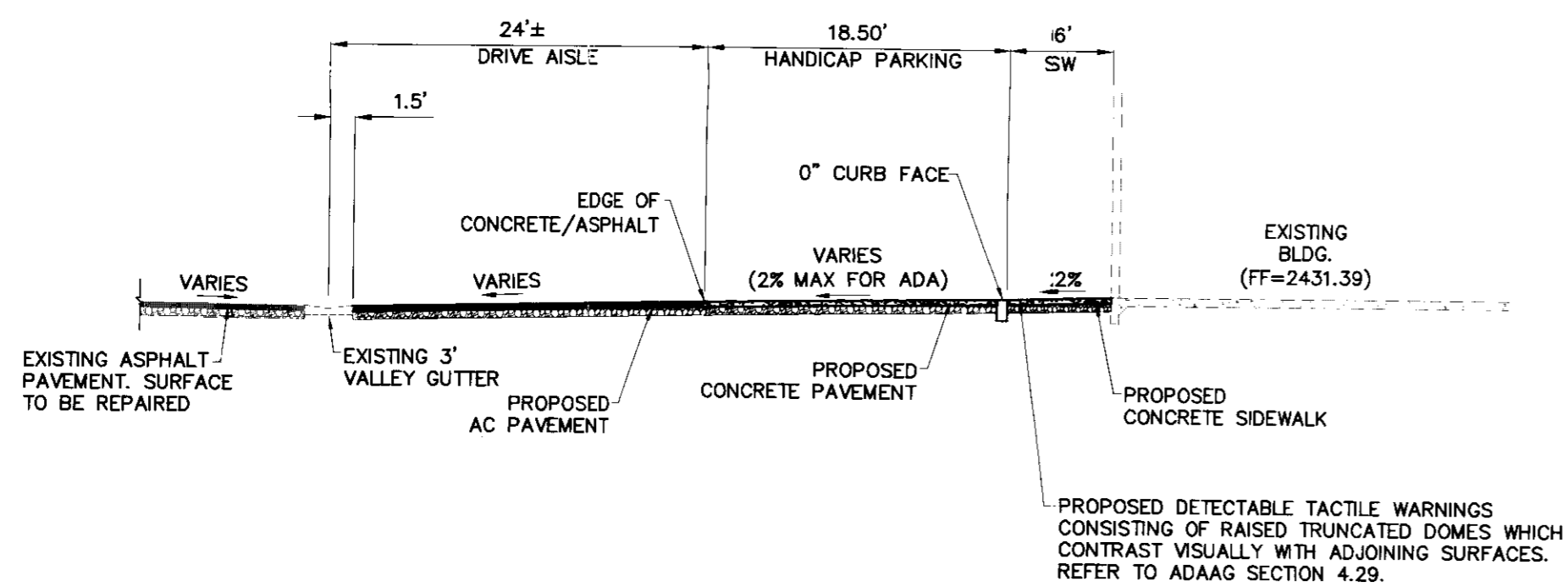
McDONALD'S AT PECOS ROAD AND BONANZA ROAD
DEMOLITION PLAN
 APN: 140-30-411-001
 3500 E. BONANZA RD
 LAS VEGAS, NV 89110
 CITY OF LAS VEGAS

ENGINEER'S SEAL
 RANDOLPH A. SKORPINSKI
 CIVIL
 No. 14985
 STATE OF NEVADA
 DATE: 07/14/11
 JOB NO: CD11021
 DRAWN BY: MCRP
 CHECKED BY: RAS
 SCALE: 1" = 20'
 SHEET 4 OF 8
 CLV# XXXXX

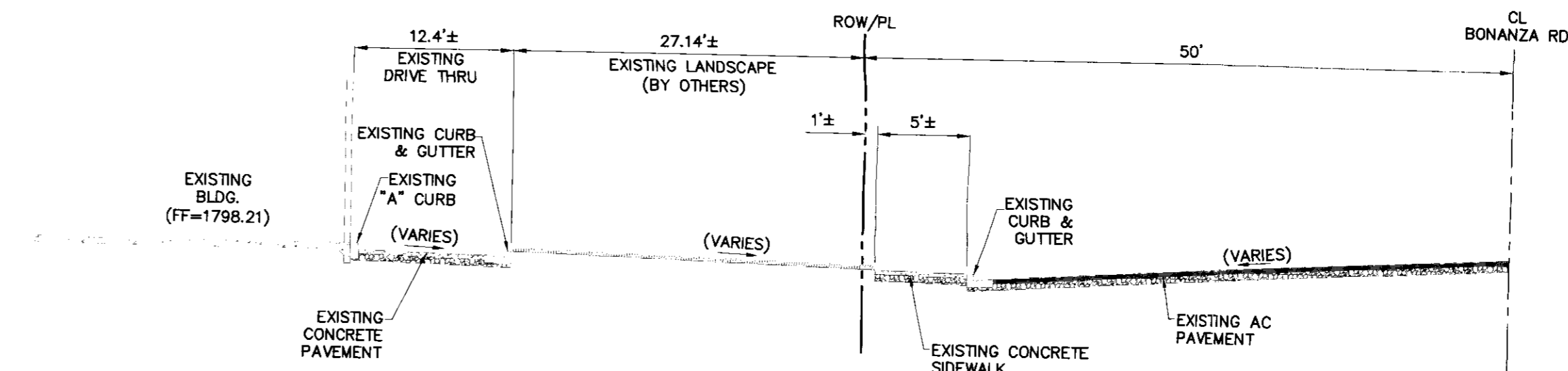
HANDICAP ACCESSIBILITY NOTE:
 CONTRACTOR TO COMPLY WITH ALL ADA REQUIREMENTS PER MCDONALD'S STANDARDS. IF CONTRACTOR FINDS DISCREPANCIES WITH ANY INFORMATION INDICATED ON THESE PLANS, SPECTRUM SURVEYING & ENGINEERING IS TO BE NOTIFIED BY CONTRACTOR IMMEDIATELY.



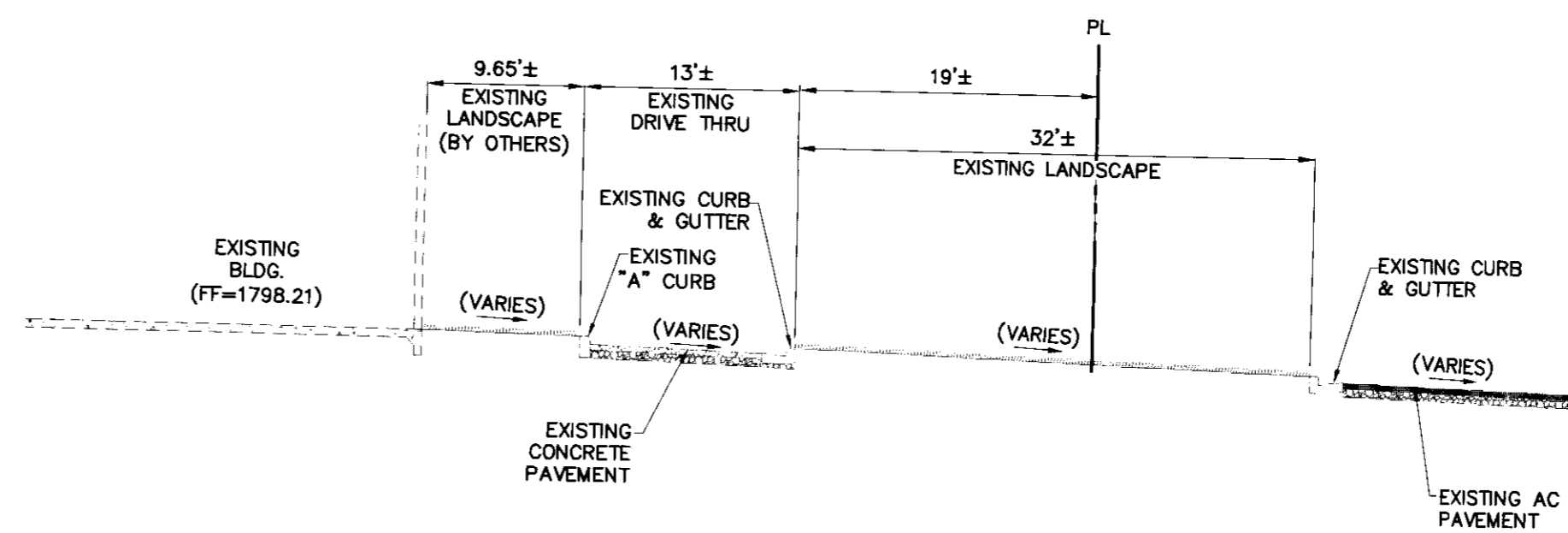
CROSS SECTION D
 NTS C6



CROSS SECTION C
 NTS C6



CROSS SECTION B
 NTS C6



CROSS SECTION A
 NTS C6

This grading plan is a part of drainage study # 4532 which was received on 7/19/11 and App'd on 7/26/11. Page 6 of 7.

REV.	DESCRIPTION	APP'D BY	DATE

DEVELOPER
 MCDONALD'S USA, LLC
 SOUTH ULSTER ST., SUITE 1300
 DENVER CO, 80237
 PHONE: (858) 342-3536
 FAX: (702) 543-2733

SPECTRUM SURVEYING & ENGINEERING
 8905 W POST ROAD, SUITE 100
 LAS VEGAS, NEVADA 89148
 OFFICE: (702) 367-7705
 FAX: (702) 367-8733

MCDONALD'S CORPORATION
 THESE ARE THE CONFIDENTIAL AND PROPRIETARY PROPERTY OF MCDONALD'S CORPORATION AND SHALL NOT BE COPIED, REPRODUCED, OR TRANSMITTED IN ANY FORM OR BY ANY MEANS, ELECTRONIC OR MECHANICAL, INCLUDING PHOTOCOPYING, RECORDING, OR BY ANY INFORMATION STORAGE AND RETRIEVAL SYSTEM, WITHOUT THE WRITTEN AUTHORIZATION OF MCDONALD'S CORPORATION. ANY UNAUTHORIZED USE OF THIS SPECIFIC SITE IN CONJUNCTION WITH ITS ISSUANCE OR FOR ANY OTHER PURPOSE IS STRICTLY PROHIBITED. THIS SITE OR ANY PART THEREOF IS NOT TO BE USED FOR ANY OTHER PROJECT WITHOUT THE EXPRESS WRITTEN PERMISSION OF MCDONALD'S CORPORATION. THE SERVICES OF PROPERLY LICENSED PROFESSIONAL ENGINEERS AND ARCHITECTS ARE REQUIRED FOR THE CONTRACT DOCUMENTS FOR THIS PROJECT. PROJECT IS NOT AUTHORIZED.

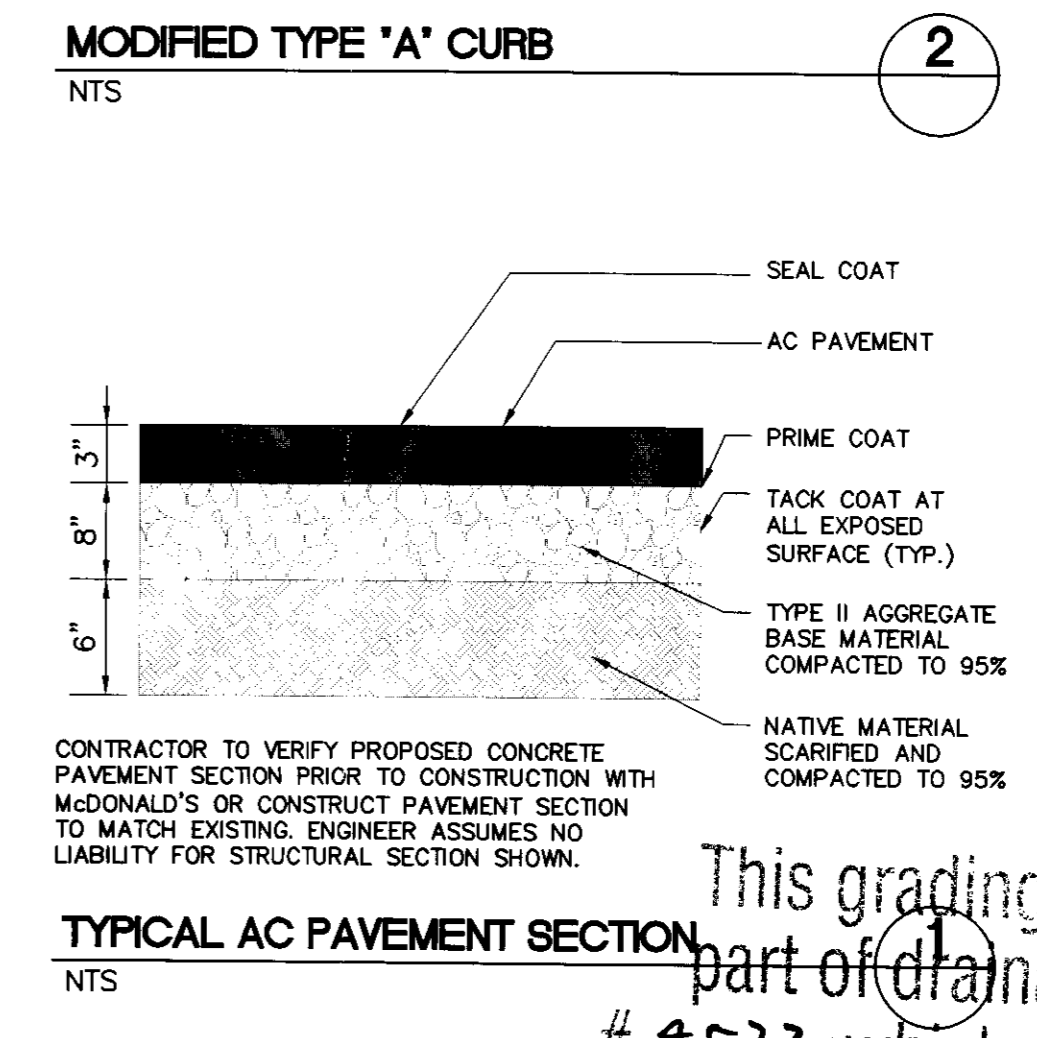
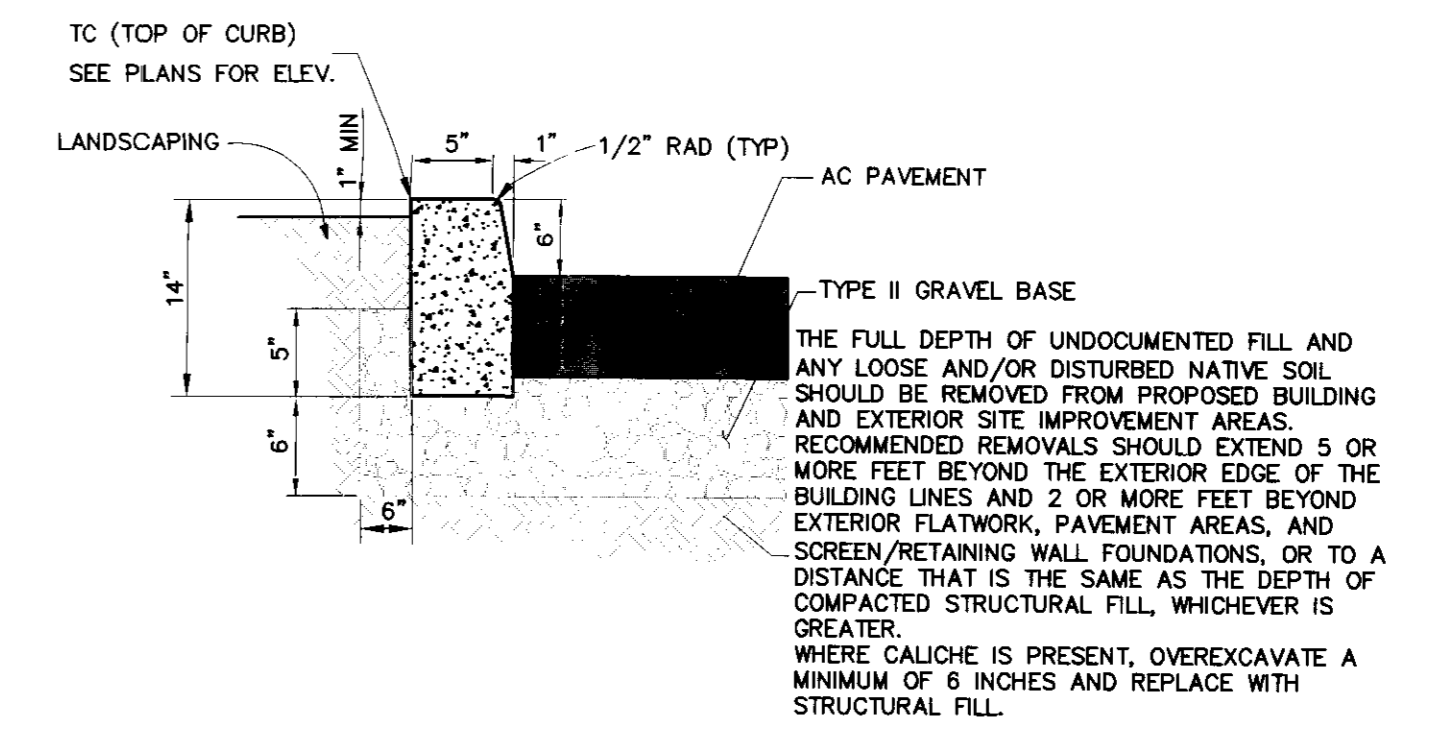
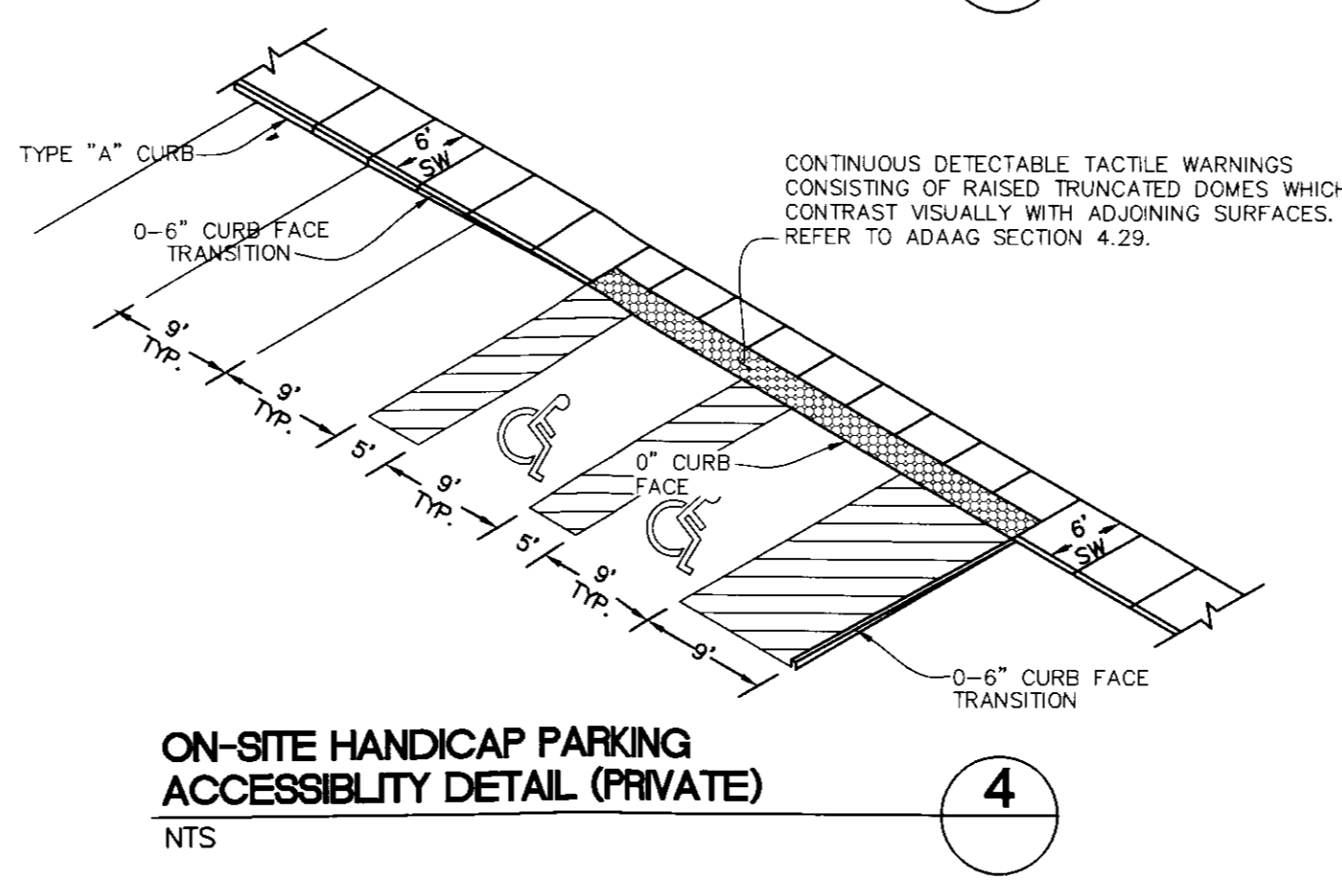
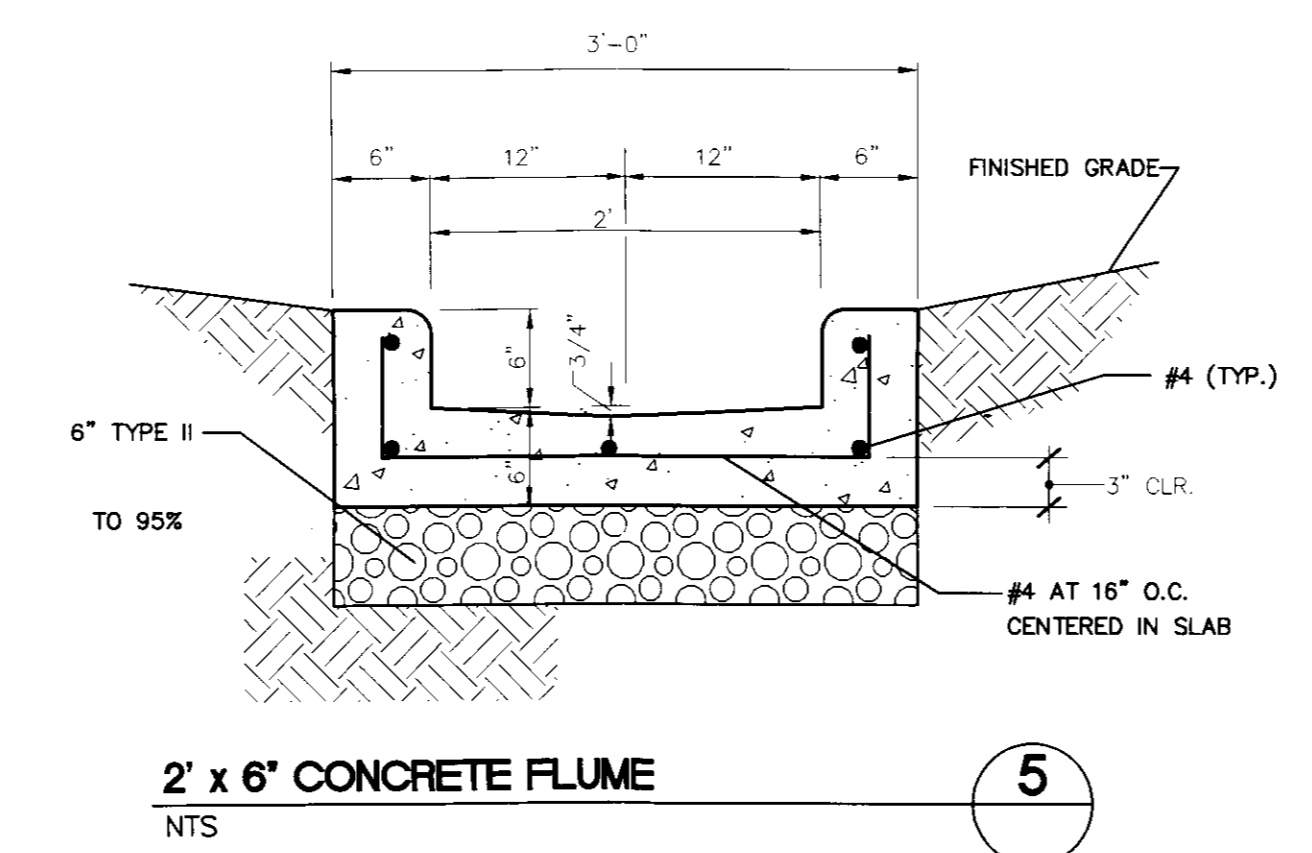
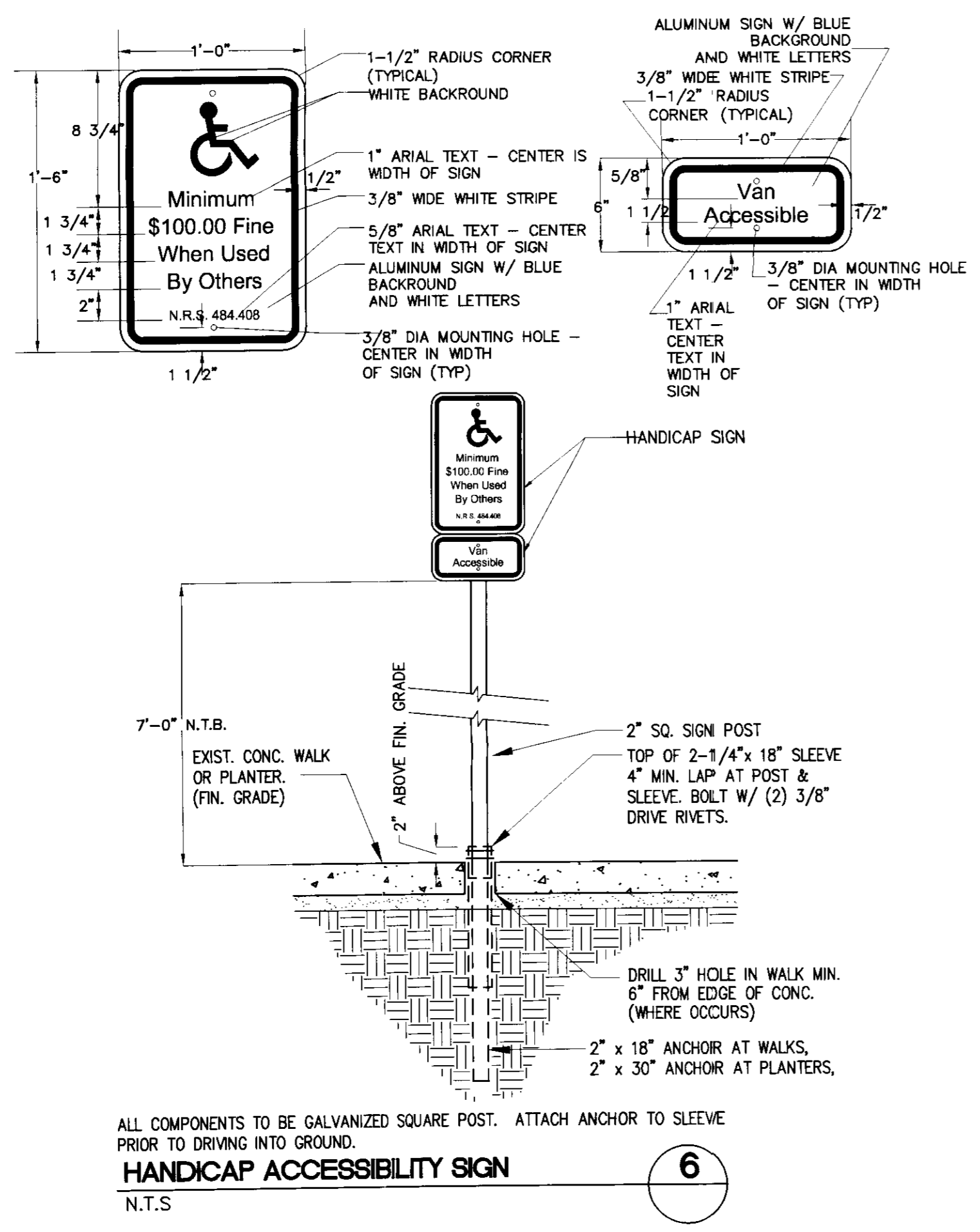
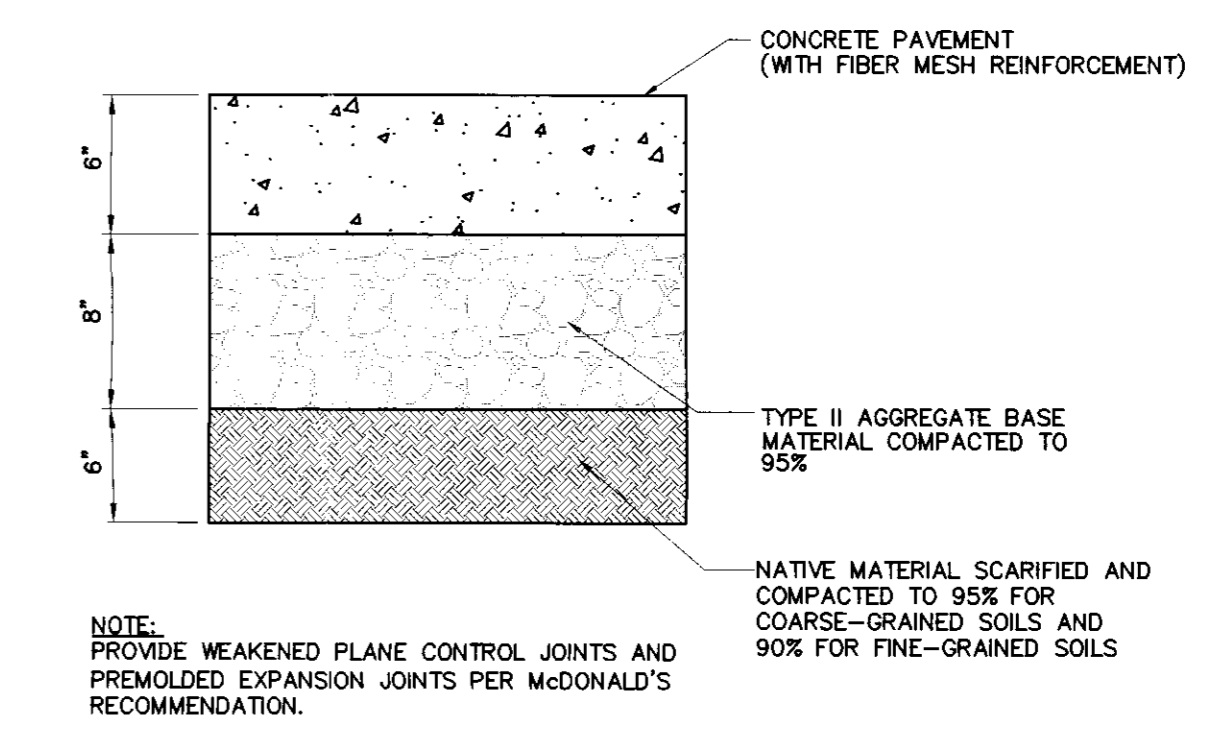
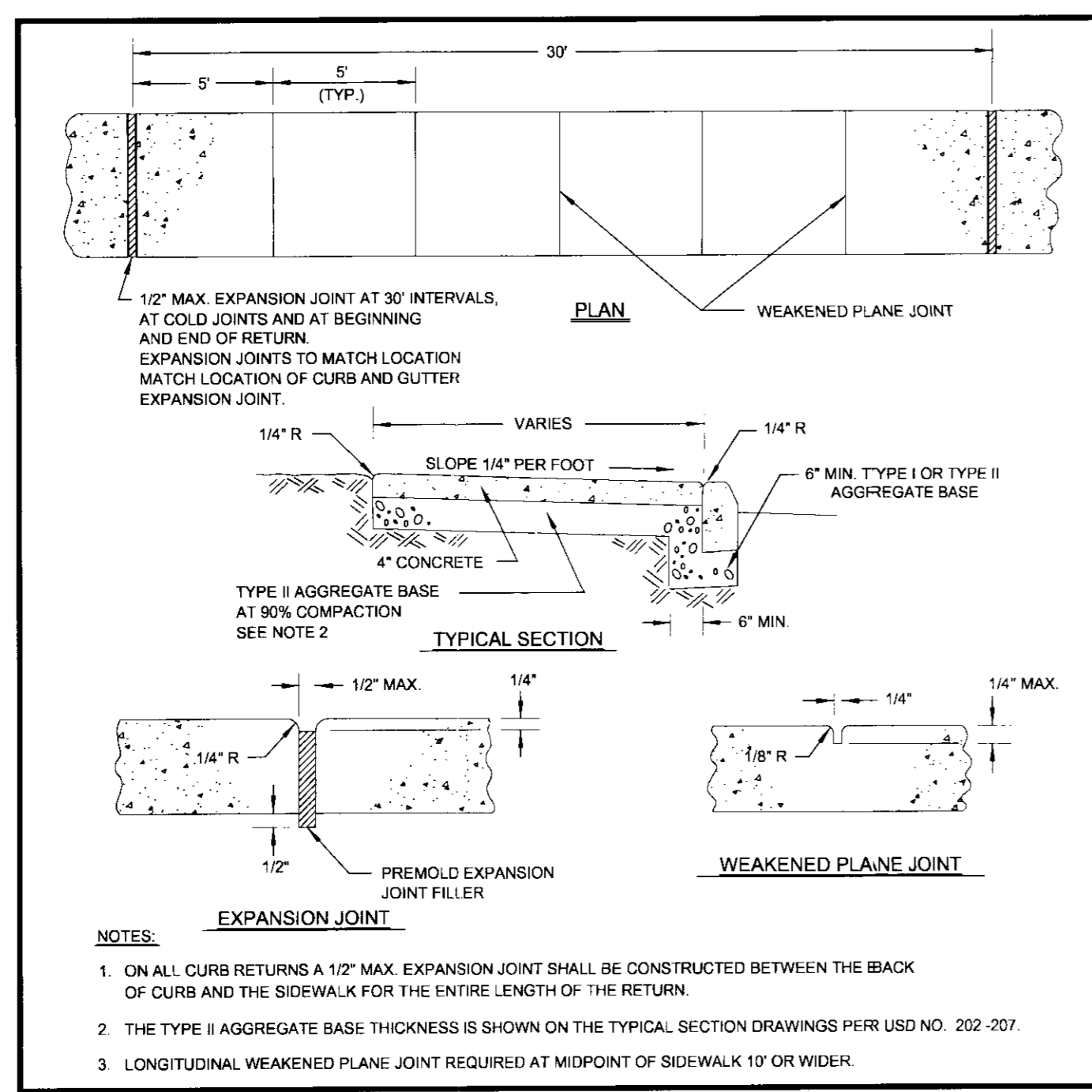
CROSS SECTION SHEET
 APN: 140-30-411-001
 3500 E BONANZA RD
 LAS VEGAS, NV 89110
 CITY OF LAS VEGAS

PROFESSIONAL ENGINEER - STATE OF NEVADA
 RANDOLPH A. SKORPINSKI
 EXP: 06-30-12
 CIVIL
 No. 14385

ENGINEER'S SEAL
 DATE: 07/14/11
 JOB NO: CD11021
 DRAWN BY: MCRP
 CHECKED BY: RAS
 SCALE: NONE

C7 SHEET 7 OF 8
 CLV# XXXXX

HANDICAP ACCESSIBILITY NOTE:
 CONTRACTOR TO COMPLY WITH ALL ADA REQUIREMENTS PER McDONALD'S STANDARDS. IF CONTRACTOR FINDS DISCREPANCIES WITH ANY INFORMATION INDICATED ON THESE PLANS, SPECTRUM SURVEYING & ENGINEERING IS TO BE NOTIFIED BY CONTRACTOR IMMEDIATELY.



This grading plan is a part of drainage study # 4532 which was received on 7/14/11 and App'd on 7/26/11. Page 7 of 7

REVISIONS	REV.	DESCRIPTION	APP'D BY	DATE
<p>DEVELOPER McDONALD'S USA, LLC SOUTH ULSTER ST., SUITE 1300 DENVER CO, 80237 PHONE: (858) 342-3536 FAX: (702) 543-2733</p>				
<p>McDONALD'S CORPORATION <small>McDONALD'S CORPORATION AND SHALL NOT BE COPIED OR REPRODUCED WITHOUT THE WRITTEN PERMISSION OF THE CORPORATION. THIS DOCUMENT IS THE PROPERTY OF THE CORPORATION AND IS NOT TO BE LOANED, REPRODUCED, COPIED, OR IN ANY MANNER DISSEMINATED TO ANY OTHER PERSON OR ENTITY WITHOUT THE WRITTEN PERMISSION OF THE CORPORATION. THE SERVICES OF PROPERTY LICENSED CONTRACTORS ARE REQUIRED FOR THIS PROJECT. CONTRACT DOCUMENTS FOR REUSE ON ANOTHER PROJECT IS NOT AUTHORIZED.</small></p>				
<p>DETAIL SHEET APN: 140-30-411-001 3500 E. BONANZA RD LAS VEGAS, NV 89110 CITY OF LAS VEGAS</p>				
<p>ENGINEER'S SEAL DATE: 07/14/11 JOB NO: CD11021 DRAWN BY: SDJ CHECKED BY: RAS SCALE: 1" = 20' SHEET 8 OF 8 CLV# XXXXX</p>				