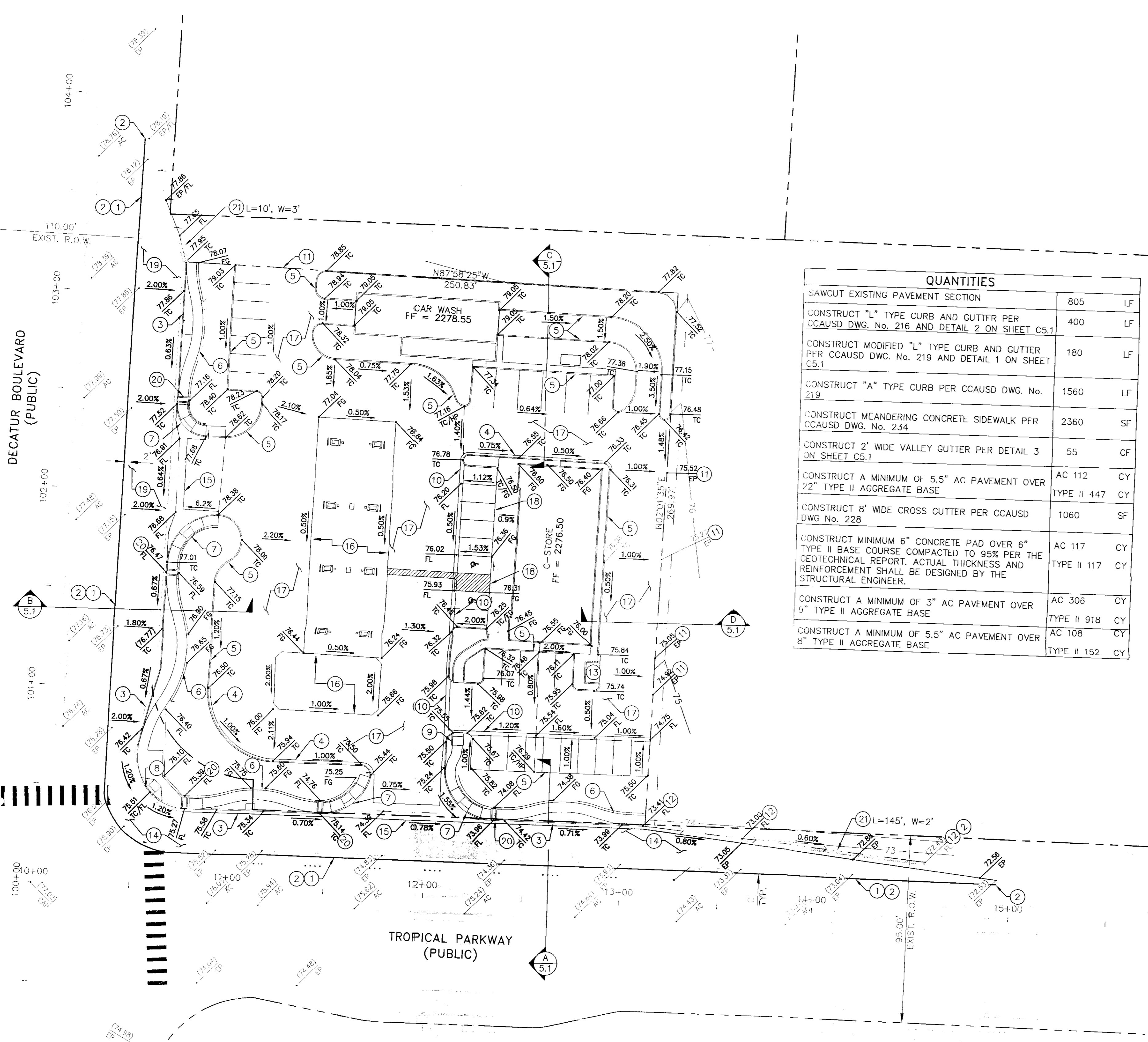
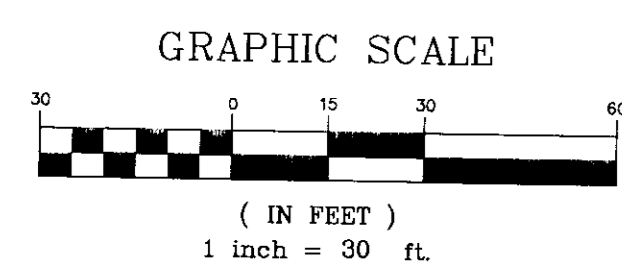


Date: May 4, 2011 8:34 AM
 User: WATKINSON, WADE
 Path: K:\LAV_G\1092253_SHAPRO\005\CAD\092253005G.DWG



QUANTITIES	
SAWCUT EXISTING PAVEMENT SECTION	805 LF
CONSTRUCT "L" TYPE CURB AND GUTTER PER CCAUSD DWG. No. 216 AND DETAIL 2 ON SHEET C5.1	400 LF
CONSTRUCT MODIFIED "L" TYPE CURB AND GUTTER PER CCAUSD DWG. No. 219 AND DETAIL 1 ON SHEET C5.1	180 LF
CONSTRUCT "A" TYPE CURB PER CCAUSD DWG. No. 219	1560 LF
CONSTRUCT MEANDERING CONCRETE SIDEWALK PER CCAUSD DWG. No. 234	2360 SF
CONSTRUCT 2' WIDE VALLEY GUTTER PER DETAIL 3 ON SHEET C5.1	55 CF
CONSTRUCT A MINIMUM OF 5.5" AC PAVEMENT OVER 22" TYPE II AGGREGATE BASE	AC 112 CY TYPE II 447 CY
CONSTRUCT 8' WIDE CROSS GUTTER PER CCAUSD DWG No. 228	1060 SF
CONSTRUCT MINIMUM 6" CONCRETE PAD OVER 6" TYPE II BASE COURSE COMPACTED TO 95% PER THE GEOTECHNICAL REPORT. ACTUAL THICKNESS AND REINFORCEMENT SHALL BE DESIGNED BY THE STRUCTURAL ENGINEER.	AC 117 CY TYPE II 117 CY
CONSTRUCT A MINIMUM OF 3" AC PAVEMENT OVER 9" TYPE II AGGREGATE BASE	AC 306 CY TYPE II 918 CY
CONSTRUCT A MINIMUM OF 5.5" AC PAVEMENT OVER 8" TYPE II AGGREGATE BASE	AC 108 CY TYPE II 152 CY

BASIS OF BEARING

BEING THE CENTERLINE OF DECATUR BOULEVARD NORTH 02°01'35" EAST BETWEEN TROPICAL PARKWAY AND RICE AVENUE, AS SHOWN ON PLAT MAP BOOK 140 PAGE 42 AS RECORDED IN THE OFFICIAL RECORDS OF CLARK COUNTY, NEVADA ON JUNE 25, 2008

BENCHMARK

CITY OF NORTH LAS VEGAS VERTICAL CONTROL POINT "NLV90 25E4", BEING A RIVET AND 2" ROUND ALUMINUM DISK, STAMPED NORTH LAS VEGAS BM NO. NLV9025E4, SET IN THE TOP OF CURB, LOCATED APPROXIMATELY 18 FEET SOUTH OF THE SOUTHWEST SOUTH BCR AT THE INTERSECTION OF TROPICAL PARKWAY AND DECATUR BOULEVARD.

ELEVATION: 2275.79 (FEET)
 693.66 (METERS)
 CITY OF NORTH LAS VEGAS VERTICAL CONTROL v.1997 BASED ON NORTH AMERICAN VERTICAL DATUM OF 1988 (NAVD 88).

GENERAL NOTES

- CONTRACTOR TO VERIFY EXISTING GRADES SHOWN ON THE PLAN.
- CONTRACTOR TO ENSURE POSITIVE DRAINAGE. IF A CONFLICT OCCURS BETWEEN THESE PLANS AND FIELD CONDITIONS, THE CONTRACTOR SHALL NOTIFY THE ENGINEER IMMEDIATELY.
- NO STRUCTURE, VEGETATION, OR OBJECT OF ANY KIND IS PERMITTED OVER TWENTY-FOUR (24) INCHES IN HEIGHT (MEASURED FROM THE TOP OF THE ADJACENT CURB IF CURB EXISTS) WITHIN THE SIGHT VISIBILITY ZONES.
- SPOT ELEVATIONS ARE BASED ON A DATUM OF 2200 FEET. ADD 2200 FEET TO ALL SPOT ELEVATIONS SHOWN ON PLAN.
- EARTHWORK SHALL BE PERFORMED IN ACCORDANCE WITH THE GEOTECHNICAL REPORT. PREPARED BY: AMTI SUNBELT LLP DATED DECEMBER 27, 2010 FILE NO. 10100
- THE FINAL LOCATION OF SAW CUT LINES MAY BE DETERMINED BY THE CITY OF NORTH LAS VEGAS IF EXISTING CONDITIONS REQUIRE ADJUSTMENT TO THE LOCATION SHOWN ON THE PLANS.
- LANDSCAPE AND HARDSCAPE PER SEPARATE PLANS BY OTHERS. LANDSCAPING MATERIALS AND DESIGN SHALL BE EROSION RESISTANT TYPE.

CONSTRUCTION NOTES

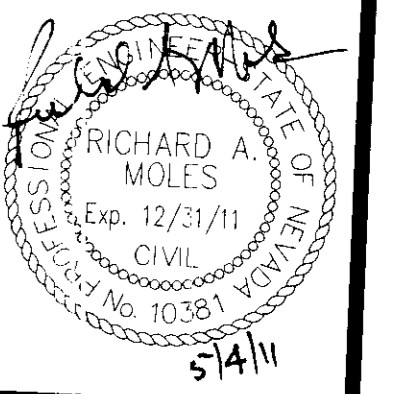
- SAWCUT EXISTING PAVEMENT SECTION
- MATCH EXISTING
- CONSTRUCT "L" TYPE CURB AND GUTTER PER CCAUSD DWG. No. 216 AND DETAIL 2 ON SHEET C5.1
- CONSTRUCT MODIFIED "L" TYPE CURB AND GUTTER PER CCAUSD DWG. No. 219 AND DETAIL 1 ON SHEET C5.1
- CONSTRUCT "A" TYPE CURB PER CCAUSD DWG. No. 219
- CONSTRUCT MEANDERING CONCRETE SIDEWALK PER CCAUSD DWG. No. 234, GRADE SWALE ADJACENT TO SIDEWALK TO ENSURE DRAINAGE TO PROPOSED SIDEWALK DRAINS
- CONSTRUCT SIDEWALK RAMP, CASE 1 (A=B=8") PER CCAUSD DWG. No. 235
- CONSTRUCT SIDEWALK RAMP, CASE 2 PER CCAUSD DWG. No. 235
- CONSTRUCT ON-SITE CURB RAMP PER ARCHITECTURAL DETAIL
- CONSTRUCT 2' WIDE VALLEY GUTTER PER DETAIL 3 ON SHEET C5.1
- GRADE TO MATCH EXISTING GROUND AT 6:1 MAX
- CONSTRUCT V-DITCH FROM PROPOSED CURB TO EXISTING V-DITCH WITH SIDES AT 6:1 MAX
- CONSTRUCT TRASH ENCLOSURE PER ARCHITECTURAL PLANS
- CONSTRUCT A MINIMUM OF 5.5" AC PAVEMENT OVER 22" TYPE II AGGREGATE BASE
- CONSTRUCT 8' WIDE CROSS GUTTER PER CCAUSD DWG No. 228
- CONSTRUCT MINIMUM 6" CONCRETE PAD OVER 6" TYPE II BASE COURSE COMPACTED TO 95% PER THE GEOTECHNICAL REPORT. ACTUAL THICKNESS AND REINFORCEMENT SHALL BE DESIGNED BY THE STRUCTURAL ENGINEER.
- CONSTRUCT A MINIMUM OF 3" AC PAVEMENT OVER 9" TYPE II AGGREGATE BASE
- CONSTRUCT 0" CURB FACE
- CONSTRUCT A MINIMUM OF 5.5" AC PAVEMENT OVER 8" TYPE II AGGREGATE BASE
- CONSTRUCT SIDEWALK DRAIN PER CCAUSD STD. DWG. No. 236
- INSTALL 16" THICK RIP RAP PAD, D_{max}=8"

This grading plan is part of drainage study # 4530 which was reviewed on 5/10/11 and App'd on 5/31/11 Page 1 of 2

Call before you dig
 1-702-455-7511
 CLARK COUNTY TRAFFIC OPERATIONS AND HIGHWAY DEPARTMENT
 1-702-432-5300
 know what's below Call before you dig 1-702-227-3929



SAFETY ALERT
 Call Before You Overhead



SHEET C3.1
 4 OF 8 SHEETS
 ONLY PROJ. NO. XXX

M GRAPE, LLC
 2460 Professional Court Suite 120
 Las Vegas, NV 89128
 (702) 839-0050

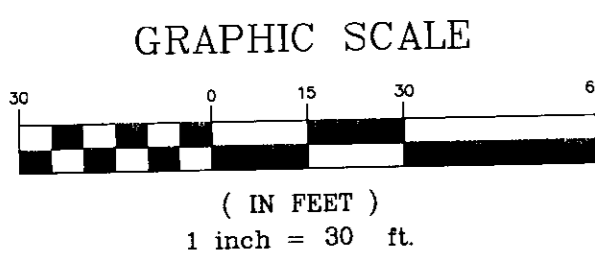
Kimley-Horn and Associates, Inc.
 Engineering, Planning, and Environmental Consultants
 2080 East Flamingo Road Suite 210 Nevada 89119
 Tel. No. (702) 735-6669 Fax No. (702) 735-6949

GRADING PLAN
 IMPROVEMENT PLANS FOR TROPICAL AND DECATUR CONVENIENCE STORE

DRAWN BY: SER 5/4/2011
 DESIGNED BY: WSW 5/4/2011
 CHECKED BY: RAM 5/4/2011
 KHA PROJECT NO.: 092253005 SCALE: 1"=30'

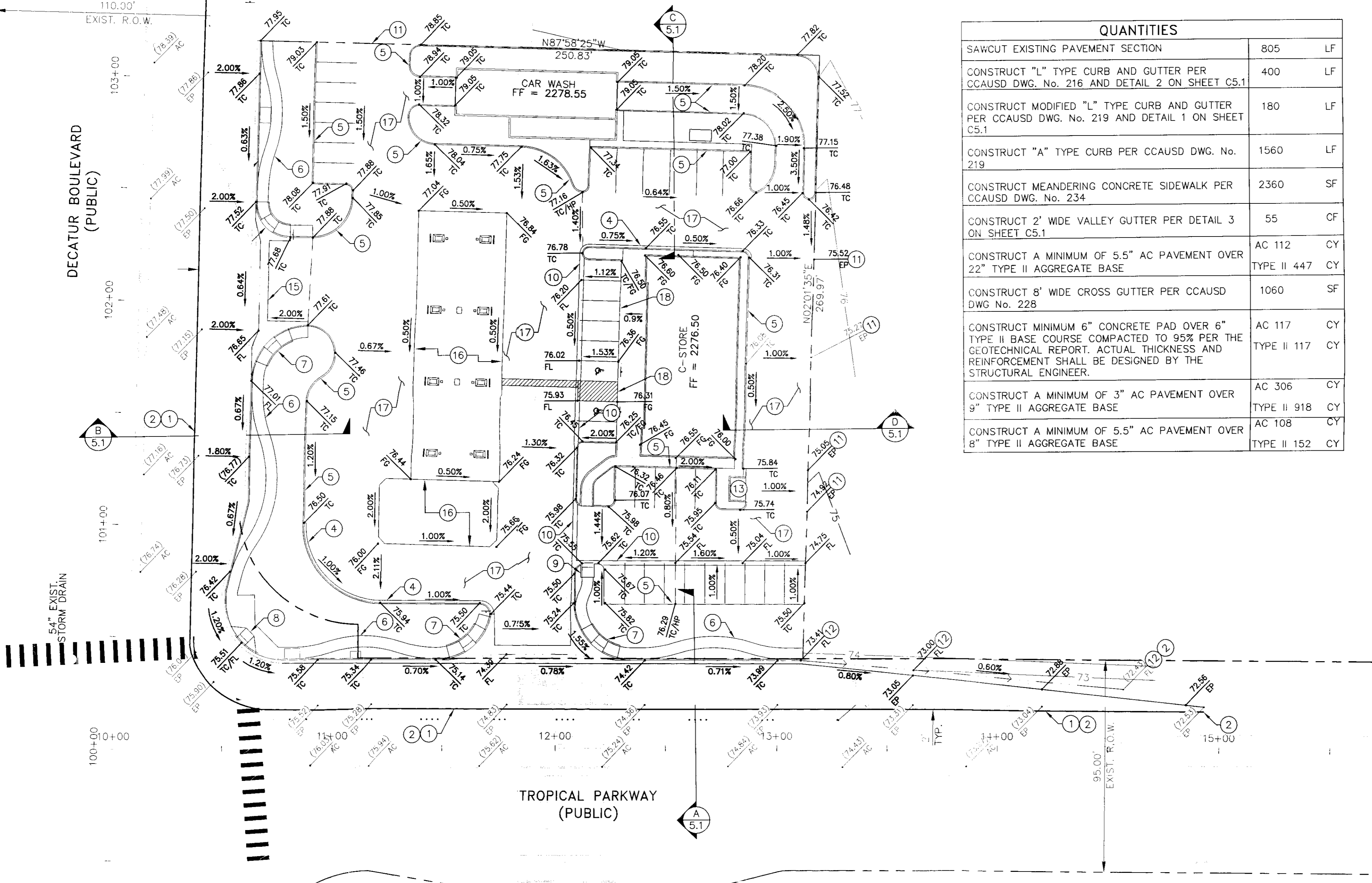
REV	DATE	BY	REVISION

User: ROBINSON, SEAN
 Date: March 28, 2011 1:22 PM
 Path: K:\LAW_CIVIL\092253 SHAPIRO\005\CAD\092253\005.DWG



DECATUR BOULEVARD
(PUBLIC)

TROPICAL PARKWAY
(PUBLIC)



QUANTITIES		
SAWCUT EXISTING PAVEMENT SECTION	805	LF
CONSTRUCT "L" TYPE CURB AND GUTTER PER CCAUSD DWG. No. 216 AND DETAIL 2 ON SHEET C5.1	400	LF
CONSTRUCT MODIFIED "L" TYPE CURB AND GUTTER PER CCAUSD DWG. No. 219 AND DETAIL 1 ON SHEET C5.1	180	LF
CONSTRUCT "A" TYPE CURB PER CCAUSD DWG. No. 219	1560	LF
CONSTRUCT MEANDERING CONCRETE SIDEWALK PER CCAUSD DWG. No. 234	2360	SF
CONSTRUCT 2' WIDE VALLEY GUTTER PER DETAIL 3 ON SHEET C5.1	55	CF
CONSTRUCT A MINIMUM OF 5.5" AC PAVEMENT OVER 22" TYPE II AGGREGATE BASE	AC 112	CY
	TYPE II 447	CY
CONSTRUCT 8' WIDE CROSS GUTTER PER CCAUSD DWG No. 228	1060	SF
CONSTRUCT MINIMUM 6" CONCRETE PAD OVER 6" TYPE II BASE COURSE COMPACTED TO 95% PER THE GEOTECHNICAL REPORT. ACTUAL THICKNESS AND REINFORCEMENT SHALL BE DESIGNED BY THE STRUCTURAL ENGINEER.	AC 117	CY
	TYPE II 117	CY
CONSTRUCT A MINIMUM OF 3" AC PAVEMENT OVER 9" TYPE II AGGREGATE BASE	AC 306	CY
	TYPE II 918	CY
CONSTRUCT A MINIMUM OF 5.5" AC PAVEMENT OVER 8" TYPE II AGGREGATE BASE	AC 108	CY
	TYPE II 152	CY

BASIS OF BEARING

BEING THE CENTERLINE OF DECATUR BOULEVARD NORTH 02°01'35" EAST BETWEEN TROPICAL PARKWAY AND RICE AVENUE, AS SHOWN ON PLAT MAP BOOK 140 PAGE 42 AS RECORDED IN THE OFFICIAL RECORDS OF CLARK COUNTY, NEVADA ON JUNE 25, 2008

BENCHMARK

CITY OF NORTH LAS VEGAS VERTICAL CONTROL POINT "NLV90 25E4", BEING A RIVET AND 2" ROUND ALUMINUM DISK, STAMPED NORTH LAS VEGAS BM NO. NLV9025E4, SET IN THE TOP OF CURB, LOCATED APPROXIMATELY 18 FEET SOUTH OF THE SOUTHWEST SOUTH BCR AT THE INTERSECTION OF TROPICAL PARKWAY AND DECATUR BOULEVARD.

ELEVATION: 2275.79 (FEET)
 693.66 (METERS)
 CITY OF NORTH LAS VEGAS VERTICAL CONTROL v.1997 BASED ON NORTH AMERICAN VERTICAL DATUM OF 1988 (NAVD 88).

GENERAL NOTES

- CONTRACTOR TO VERIFY EXISTING GRADES SHOWN ON THE PLAN.
- CONTRACTOR TO ENSURE POSITIVE DRAINAGE. IF A CONFLICT OCCURS BETWEEN THESE PLANS AND FIELD CONDITIONS, THE CONTRACTOR SHALL NOTIFY THE ENGINEER IMMEDIATELY.
- NO STRUCTURE, VEGETATION, OR OBJECT OF ANY KIND IS PERMITTED OVER TWENTY-FOUR (24) INCHES IN HEIGHT (MEASURED FROM THE TOP OF THE ADJACENT CURB IF CURB EXISTS) WITHIN THE SIGHT VISIBILITY ZONES.
- SPOT ELEVATIONS ARE BASED ON A DATUM OF 2200 FEET. ADD 2200 FEET TO ALL SPOT ELEVATIONS SHOWN ON PLAN.
- EARTHWORK SHALL BE PERFORMED IN ACCORDANCE WITH THE GEOTECHNICAL REPORT. PREPARED BY: AMTI SUNBELT LLP DATED DECEMBER 27, 2010 FILE NO. 10100
- THE FINAL LOCATION OF SAW CUT LINES MAY BE DETERMINED BY THE CITY OF NORTH LAS VEGAS IF EXISTING CONDITIONS REQUIRE ADJUSTMENT TO THE LOCATION SHOWN ON THE PLANS.
- LANDSCAPE AND HARDSCAPE PER SEPARATE PLANS BY OTHERS

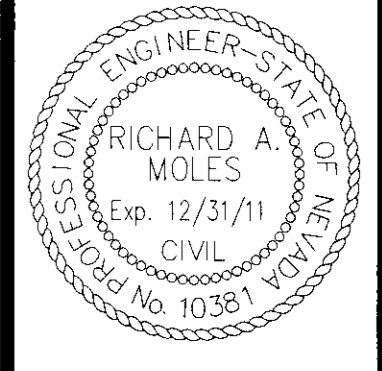
CONSTRUCTION NOTES

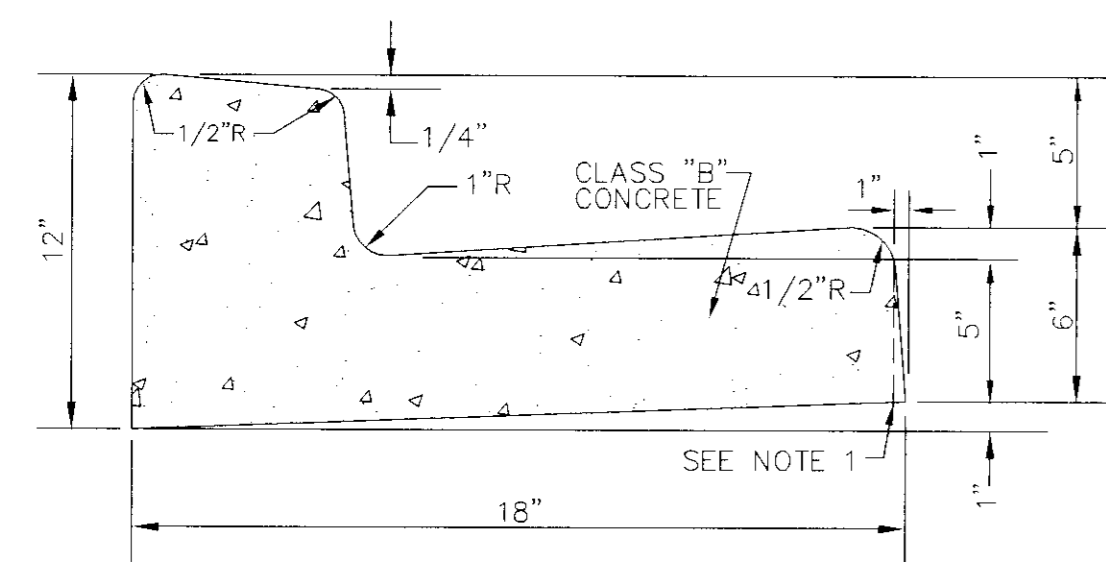
- SAWCUT EXISTING PAVEMENT SECTION
- MATCH EXISTING
- CONSTRUCT "L" TYPE CURB AND GUTTER PER CCAUSD DWG. No. 216 AND DETAIL 2 ON SHEET C5.1
- CONSTRUCT MODIFIED "L" TYPE CURB AND GUTTER PER CCAUSD DWG. No. 219 AND DETAIL 1 ON SHEET C5.1
- CONSTRUCT "A" TYPE CURB PER CCAUSD DWG. No. 219
- CONSTRUCT MEANDERING CONCRETE SIDEWALK PER CCAUSD DWG. No. 234
- CONSTRUCT SIDEWALK RAMP, CASE 1 (A=B=8') PER CCAUSD DWG. No. 235
- CONSTRUCT SIDEWALK RAMP, CASE 2 PER CCAUSD DWG. No. 235
- CONSTRUCT ON-SITE CURB RAMP PER ARCHITECTURAL DETAIL
- CONSTRUCT 2' WIDE VALLEY GUTTER PER DETAIL 3 ON SHEET C5.1
- GRADE TO MATCH EXISTING GROUND AT 6:1 MAX
- CONSTRUCT V-DITCH FROM PROPOSED CURB TO EXISTING V-DITCH WITH SIDES AT 6:1 MAX
- CONSTRUCT TRASH ENCLOSURE PER ARCHITECTURAL PLANS
- CONSTRUCT A MINIMUM OF 5.5" AC PAVEMENT OVER 22" TYPE II AGGREGATE BASE
- CONSTRUCT 8' WIDE CROSS GUTTER PER CCAUSD DWG No. 228
- CONSTRUCT MINIMUM 6" CONCRETE PAD OVER 6" TYPE II BASE COURSE COMPACTED TO 95% PER THE GEOTECHNICAL REPORT. ACTUAL THICKNESS AND REINFORCEMENT SHALL BE DESIGNED BY THE STRUCTURAL ENGINEER.
- CONSTRUCT A MINIMUM OF 3" AC PAVEMENT OVER 9" TYPE II AGGREGATE BASE
- CONSTRUCT 0" CURB FACE
- CONSTRUCT A MINIMUM OF 5.5" AC PAVEMENT OVER 8" TYPE II AGGREGATE BASE

M GRAPE, LLC 2460 Professional Court Suite 120 Las Vegas, NV 89128 (702)-839-0050	 Kimley-Horn and Associates, Inc. Engineering, Planning, and Environmental Consultants	GRADING PLAN IMPROVEMENT PLANS FOR TROPICAL AND DECATUR CONVENIENCE STORE	DRAWN BY: SER 3/28/2011	DESIGNED BY: WSW 3/28/2011	CHECKED BY: RAM 3/28/2011	KHA PROJECT NO: 092253005 SCALE: 1"=30'
			SHEET C3.1 4 OF 8 SHEETS CNLV PROJ NO. XXX			

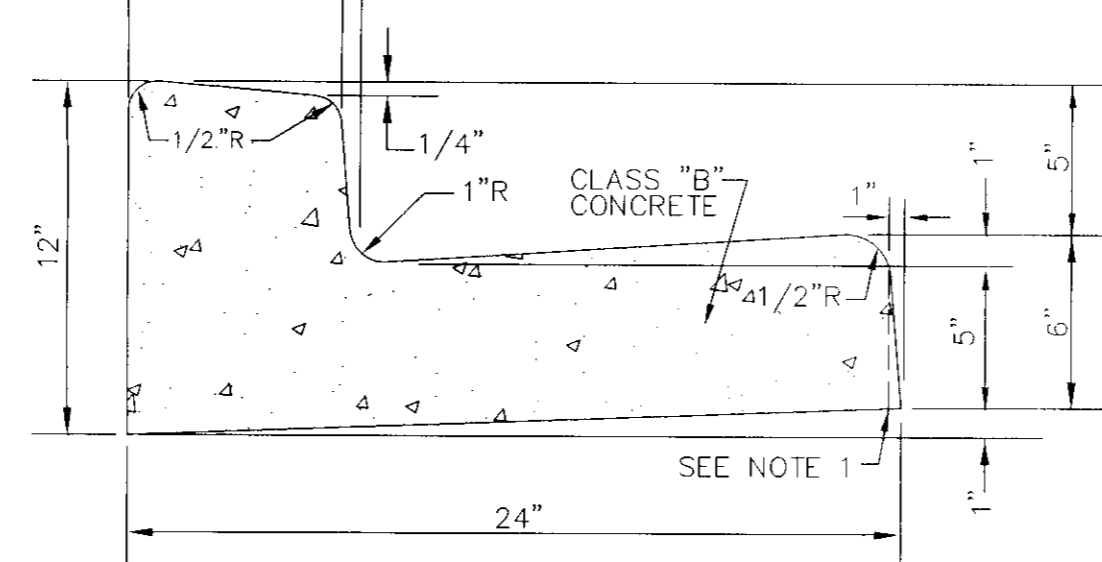


SAFETY ALERT
 Call Before You Overhead

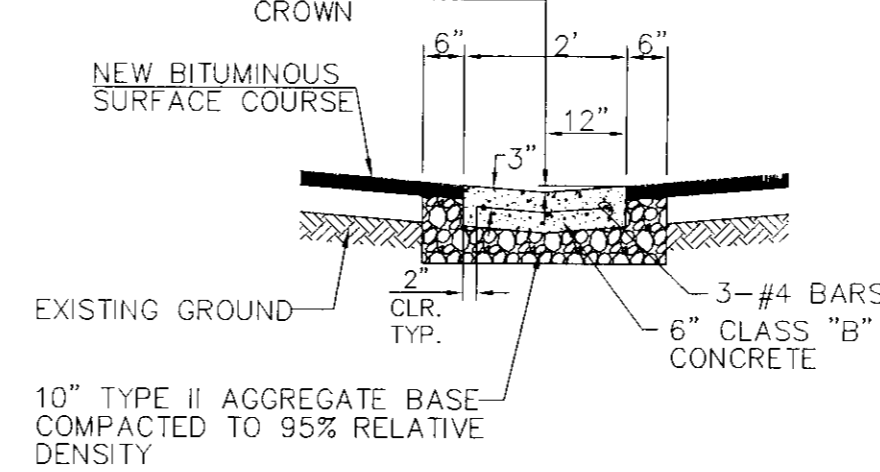




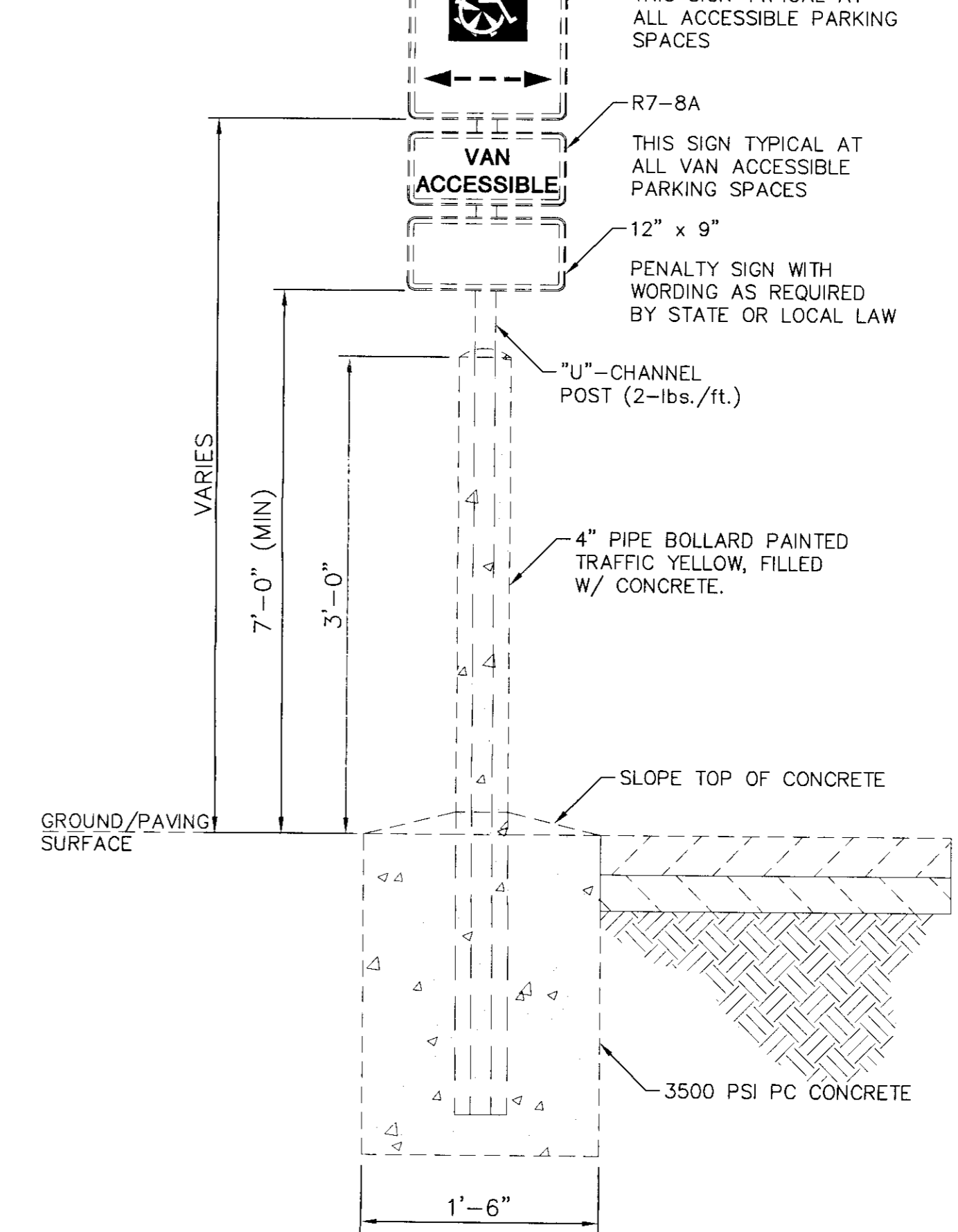
1 MODIFIED "L" CURB W/ CATCH GUTTER
N.T.S.



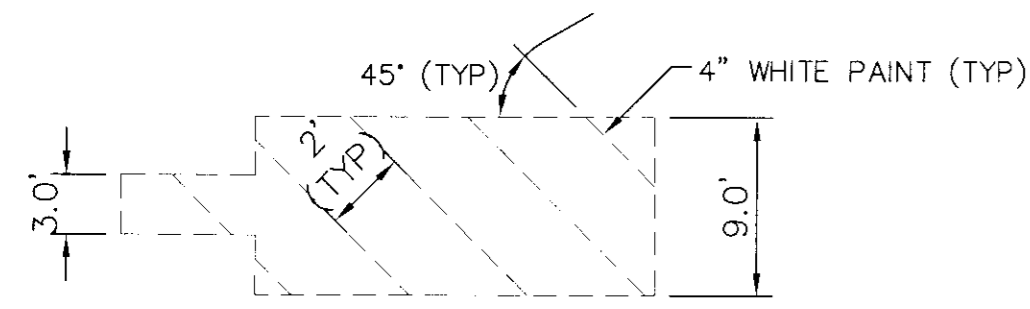
2 "L" CURB W/ CATCH GUTTER
N.T.S.



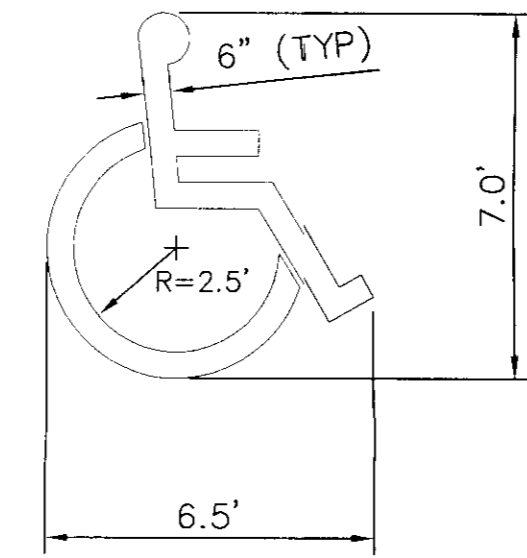
3 2' VALLEY GUTTER DETAIL
N.T.S.



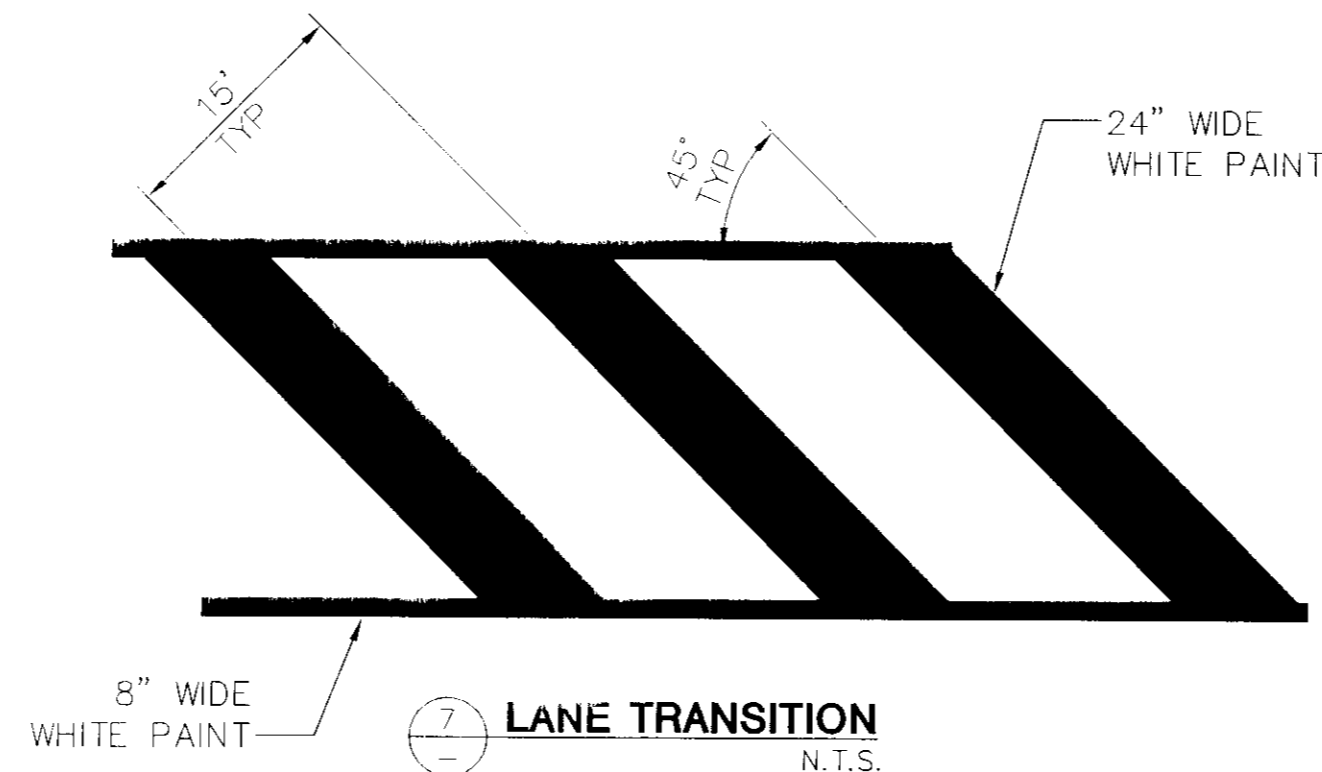
4 "HANDICAP" SIGN MOUNTING DETAIL
N.T.S.



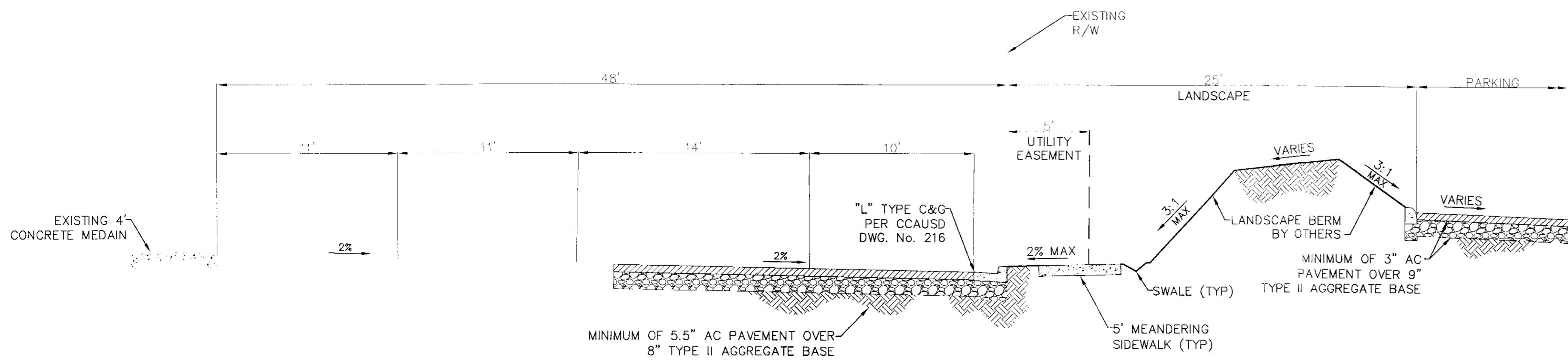
5 CROSSWALK/ADA PARKING ACCESSIBLE AREA
N.T.S.



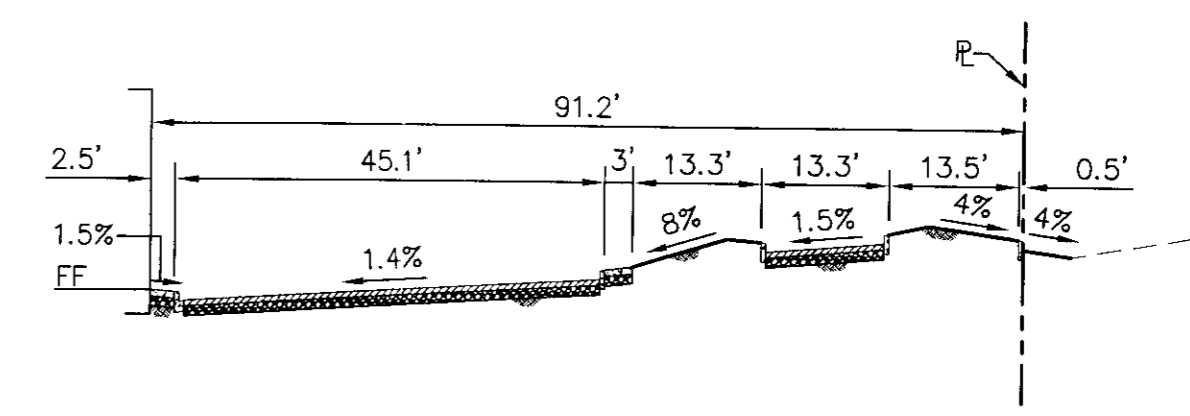
6 "HANDICAP" SYMBOL
N.T.S.



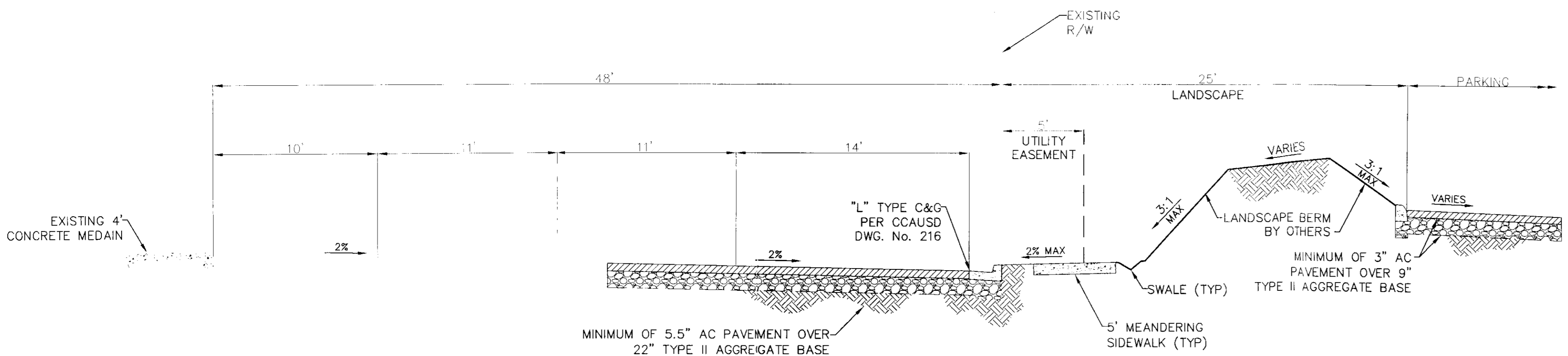
7 LANE TRANSITION
N.T.S.



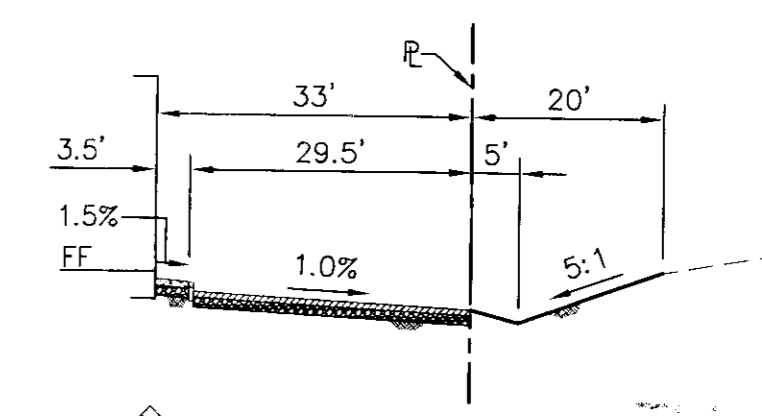
B DECATUR BOULEVARD TYPICAL SECTION
N.T.S.



C NORTH SECTION
1" = 20'



A TROPICAL PARKWAY TYPICAL SECTION
N.T.S.



D EAST SECTION
1" = 20'

REV. DATE BY

M GRAPE, LLC
2460 Professional Court Suite 120
Las Vegas NV 89128
(702)-839-0050

Kimley-Horn
and Associates, Inc.
Engineering, Planning, and Environmental Consultants

2090 East Flamingo Road
Suite 210
Las Vegas, Nevada 89119
Tel. No. (702) 735-4949
Fax No. (702) 735-4949

DETAIL SHEET

IMPROVEMENT PLANS FOR
TROPICAL AND DECATUR
CONVENIENCE STORE

DRAWN BY: SER 5/4/2011

DESIGNED BY: NSW 5/4/2011

CHECKED BY: RAM 5/4/2011

KHA PROJECT NO: 092253005 SCALE: N/A

STATE OF NEVADA
RICHARD A. MOLES
Exp. 12/31/11
CIVIL
No. 10381 (2011)

5/4/11

SHEET C5.1
8 OF 8 SHEETS
CNL PROJ NO. XXX

4530 which was on 5/10/11 and App'd 5/31/11 Page 2 of 2

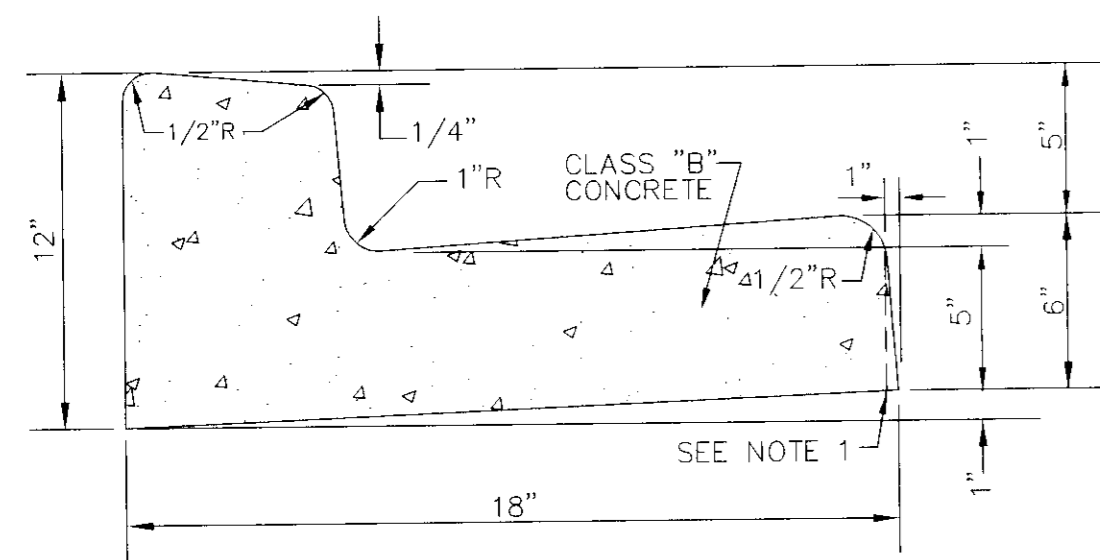
Call before you dig
UnderGround
1-702-455-7511
CLARK COUNTY TRAFFIC OPERATIONS AND
1-702-432-5300
FREEMAN AND ARTERIAL SYSTEM OF TRANSPORTATION

811
SAFETY ALERT
Call Before You Dig
1-702-227-2929

Date: May 4, 2011 8:23 AM
User: WATKINSON, WADE
Path: K:\LAV_CIVIL\092253\CAD\09225300501.DWG

NOTES

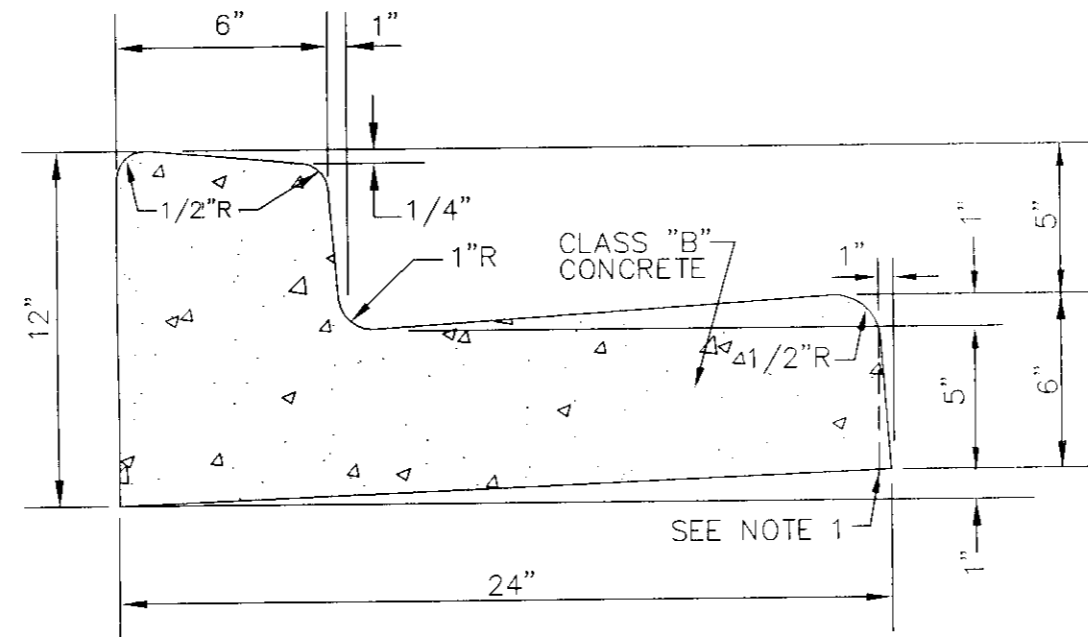
- 1" BATTER ON GUTTER FACE OPTIONAL.
- WHERE LONGITUDINAL SLOPE IS LESS THAN 0.4% THE FLOW LINE SHALL BE WATER TESTED.



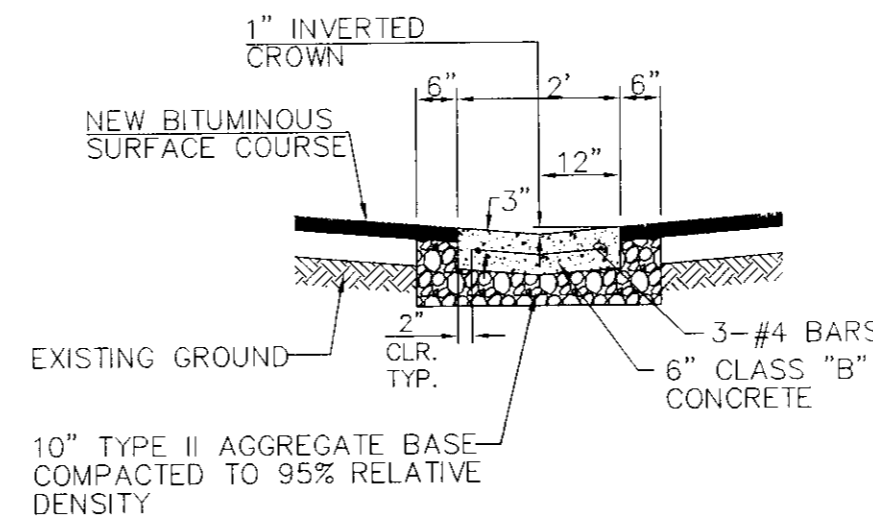
1 MODIFIED "L" CURB W/ CATCH GUTTER
N.T.S.

NOTES

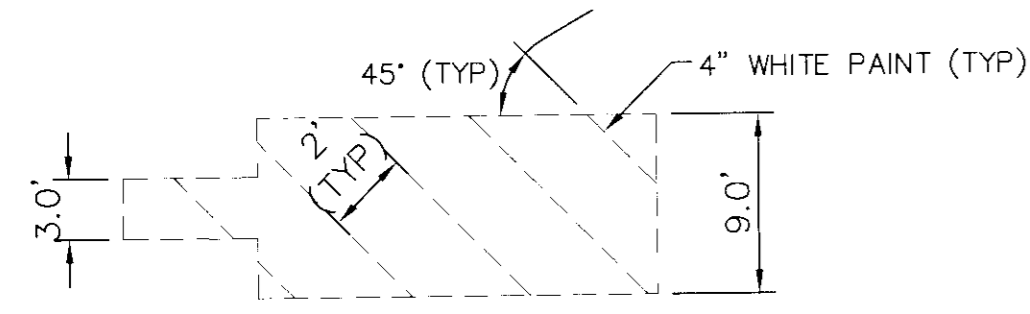
- 1" BATTER ON GUTTER FACE OPTIONAL.
- WHERE LONGITUDINAL SLOPE IS LESS THAN 0.4% THE FLOW LINE SHALL BE WATER TESTED.



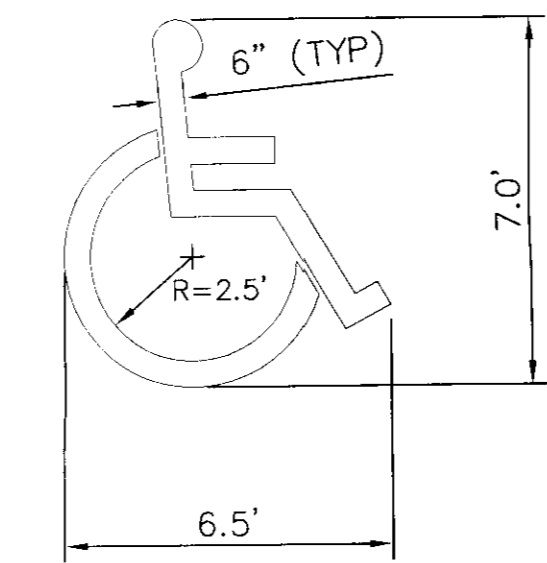
2 "L" CURB W/ CATCH GUTTER
N.T.S.



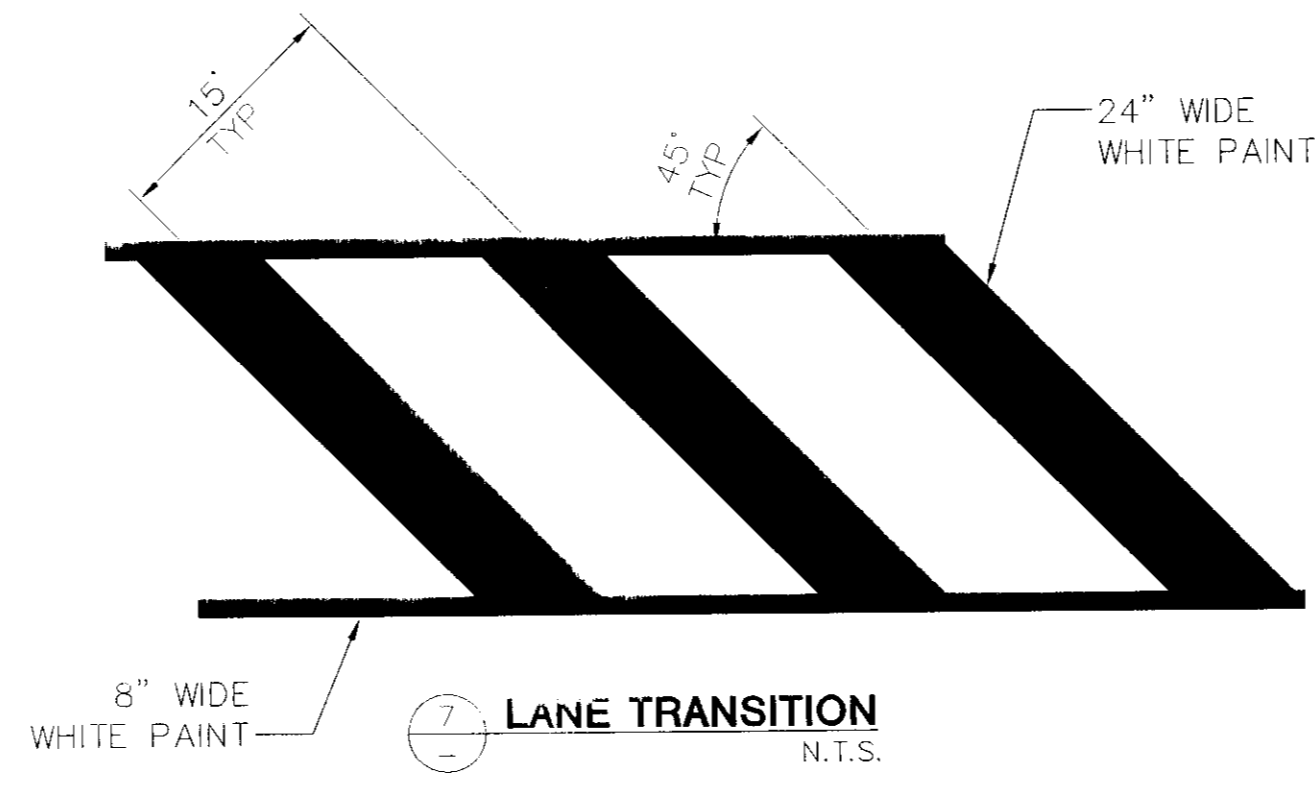
3 2' VALLEY GUTTER DETAIL
N.T.S.



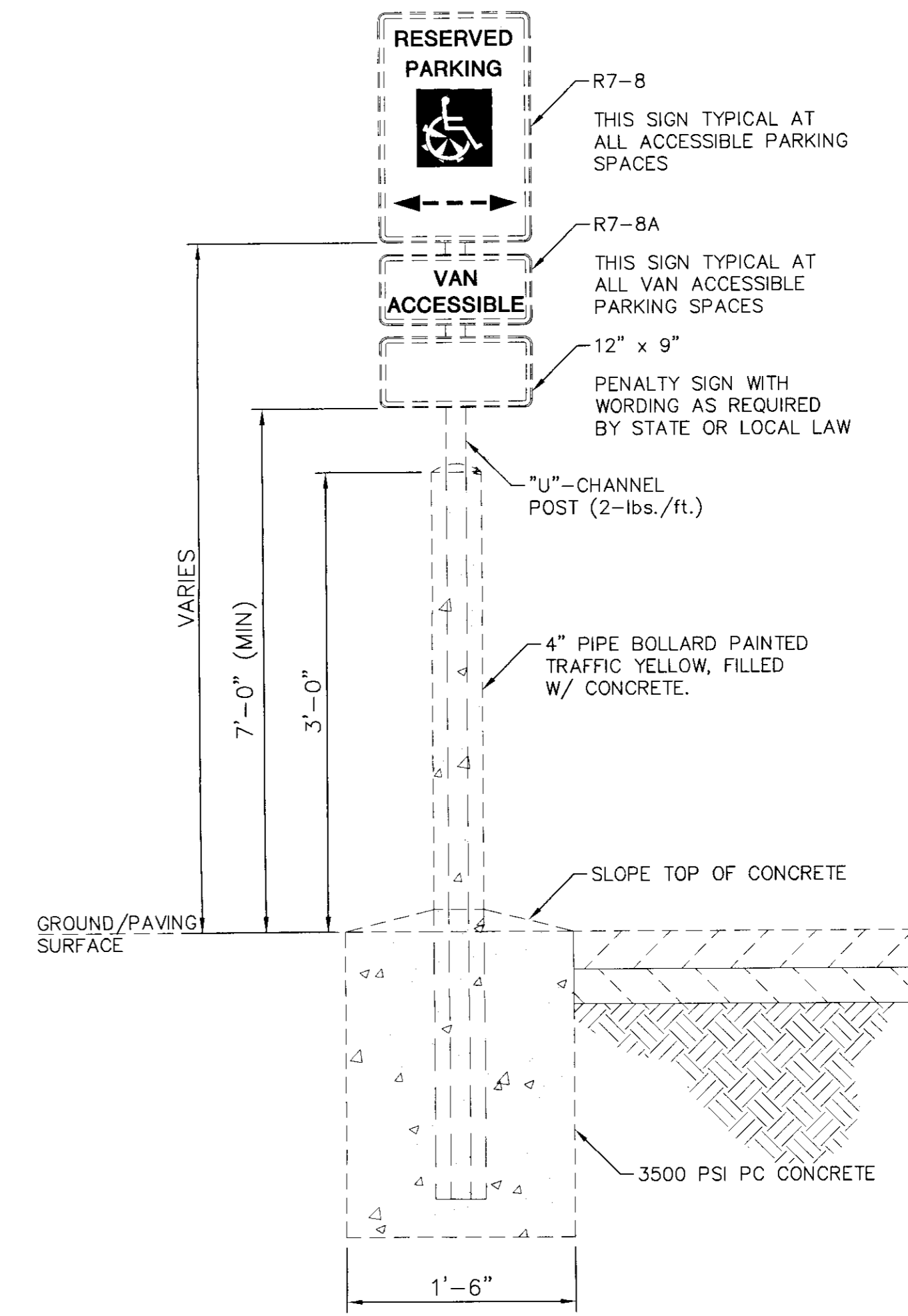
5 CROSSWALK/ADA PARKING ACCESSIBLE AREA
N.T.S.



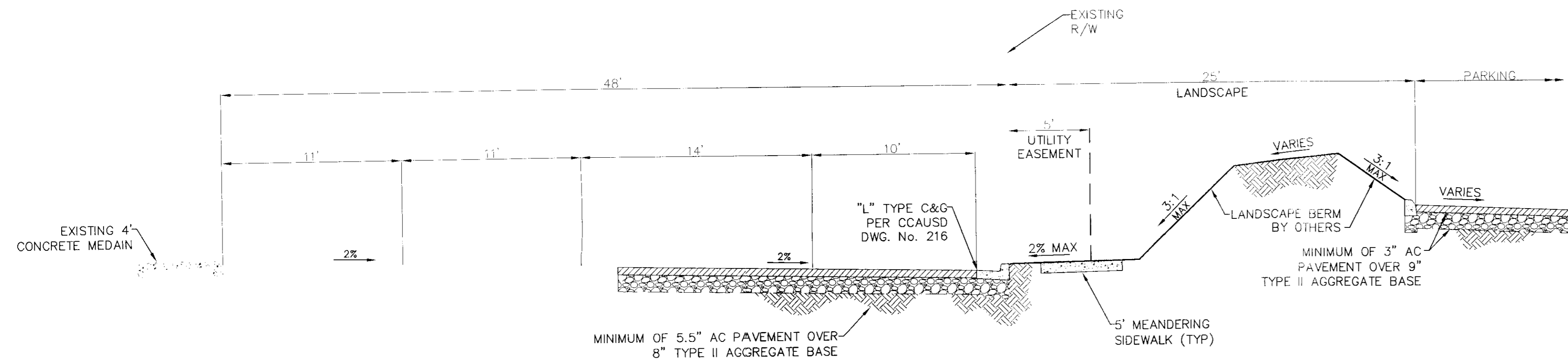
6 "HANDICAP" SYMBOL
N.T.S.



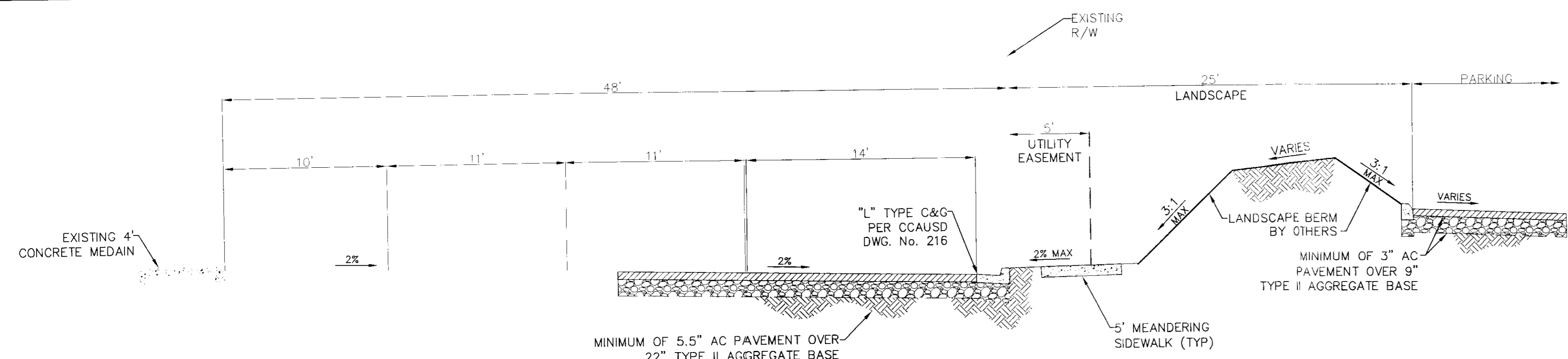
7 LANE TRANSITION
N.T.S.



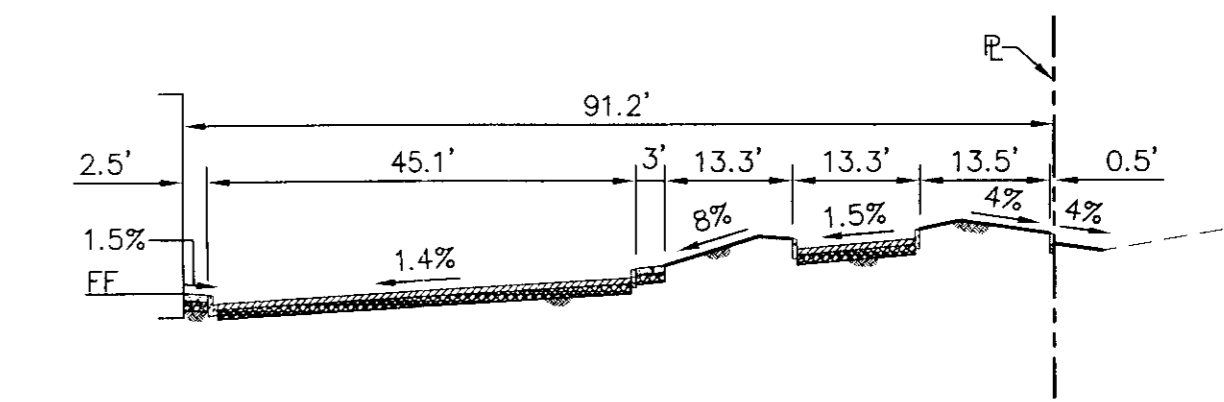
4 "HANDICAP" SIGN MOUNTING DETAIL
N.T.S.



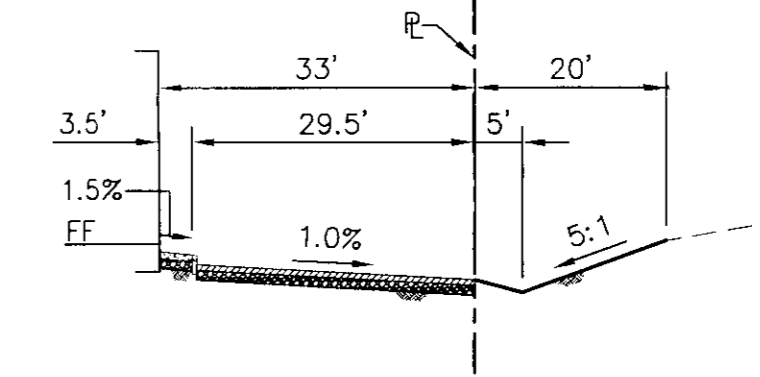
B DECATUR BOULEVARD TYPICAL SECTION
N.T.S.



A TROPICAL PARKWAY TYPICAL SECTION
N.T.S.



C NORTH SECTION
1" = 20'



D EAST SECTION
1" = 20'

Call before you dig
UnderGround
1-702-455-7511
CLASS COUNTY TRAFFIC OPERATIONS AND
1-702-432-5300
PREMIER AND METAL SYSTEMS OF TRANSPORTATION

811
Call before you dig

SAFETY ALERT
Call Before You Overhead
1-702-227-2929

RICHARD A. MOLES
Exp. 12/31/11
CIVIL ENGINEER-STATE OF NEVADA
No. 103581

SHEET C5.1
8 OF 8 SHEETS
ONLY PROJ. NO. XXX

DETAIL SHEET
IMPROVEMENT PLANS FOR
TROPICAL AND DECATUR
CONVENIENCE STORE

DRAWN BY: SER 3/28/2011
DESIGNED BY: WSW 3/28/2011
CHECKED BY: RAM 3/28/2011
KHA PROJECT NO: 092253005
SCALE: N/A

M GRAPE, LLC
2460 Professional Court Suite 120
Las Vegas, NV 89128
(702)-839-0050
Kimley-Horn and Associates, Inc.
Engineering, Planning, and Environmental Consultants
2080 East Flamingo Road Suite 210
Las Vegas, Nevada 89119
Tel. No. (702) 734-5666
Fax No. (702) 735-4949

NO.	DATE	BY	REVISION

Date: March 28, 2011 1:22 PM
User: ROBINSON, SEAN
Path: K:\LAY_CIVIL\092253 SHAPRO\05\CAD\09225300501.DWG