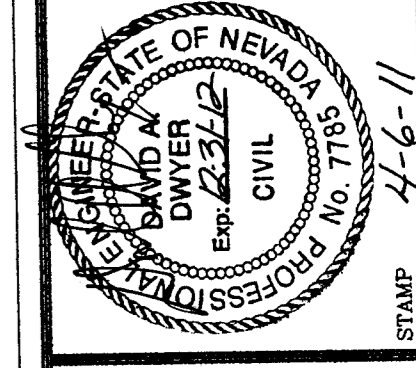


REUSE OF DOCUMENTS
THIS DOCUMENT AND THE IDEAS AND DESIGN INCORPORATED HEREIN ARE THE PROPERTY OF DWYER ENGINEERING, INC. AND ARE NOT TO BE REPRODUCED OR TRANSMITTED IN ANY FORM OR BY ANY MEANS, ELECTRONIC OR MECHANICAL, WITHOUT THE WRITTEN AUTHORIZATION OF DWYER ENGINEERING, INC.

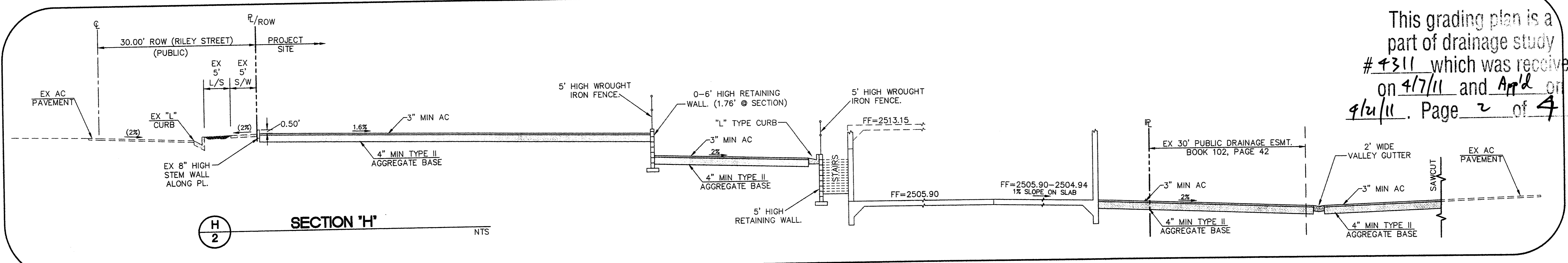
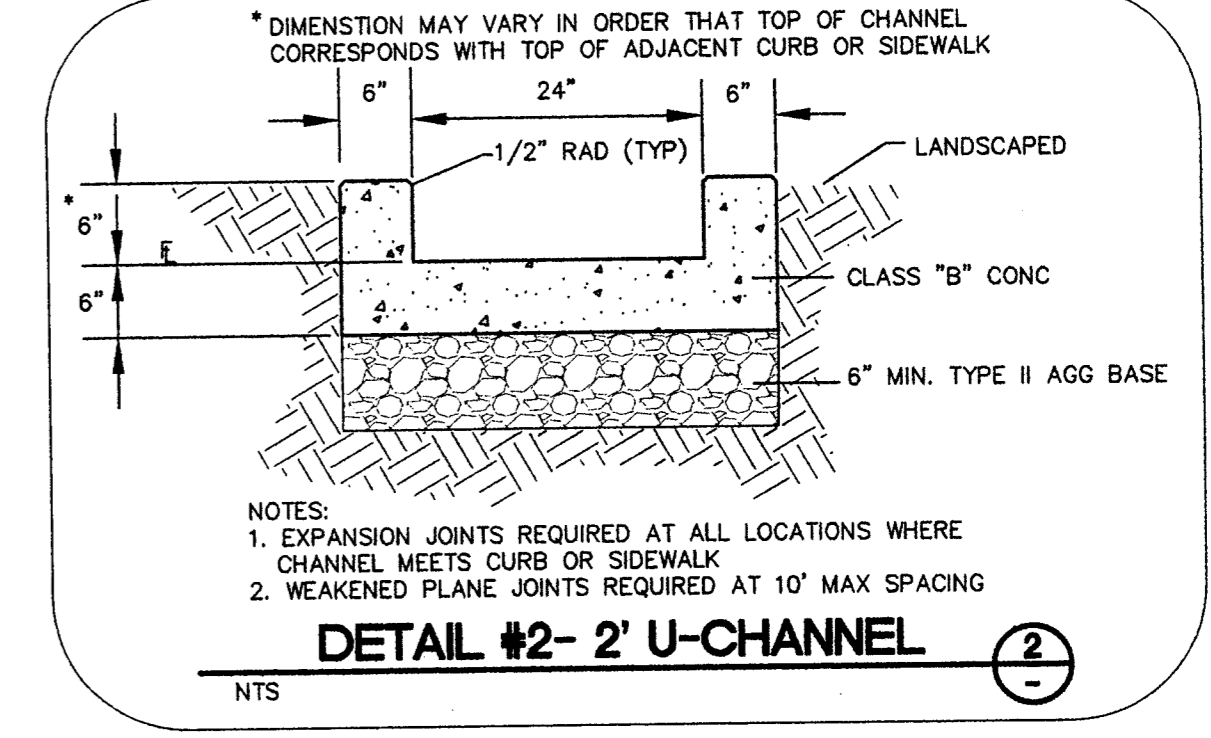
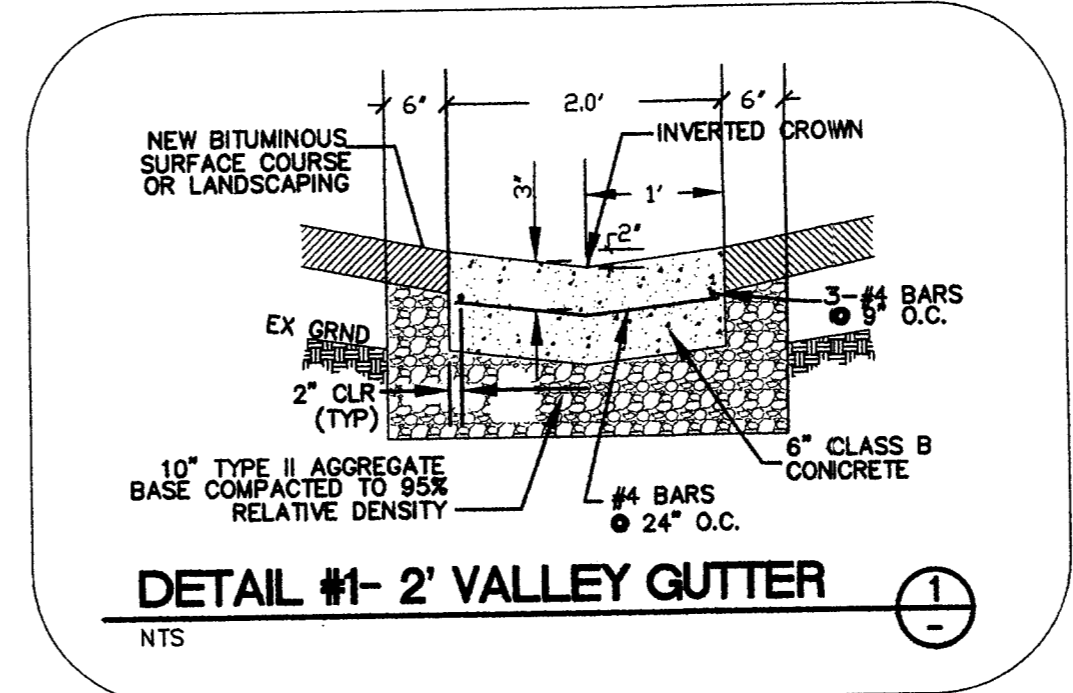
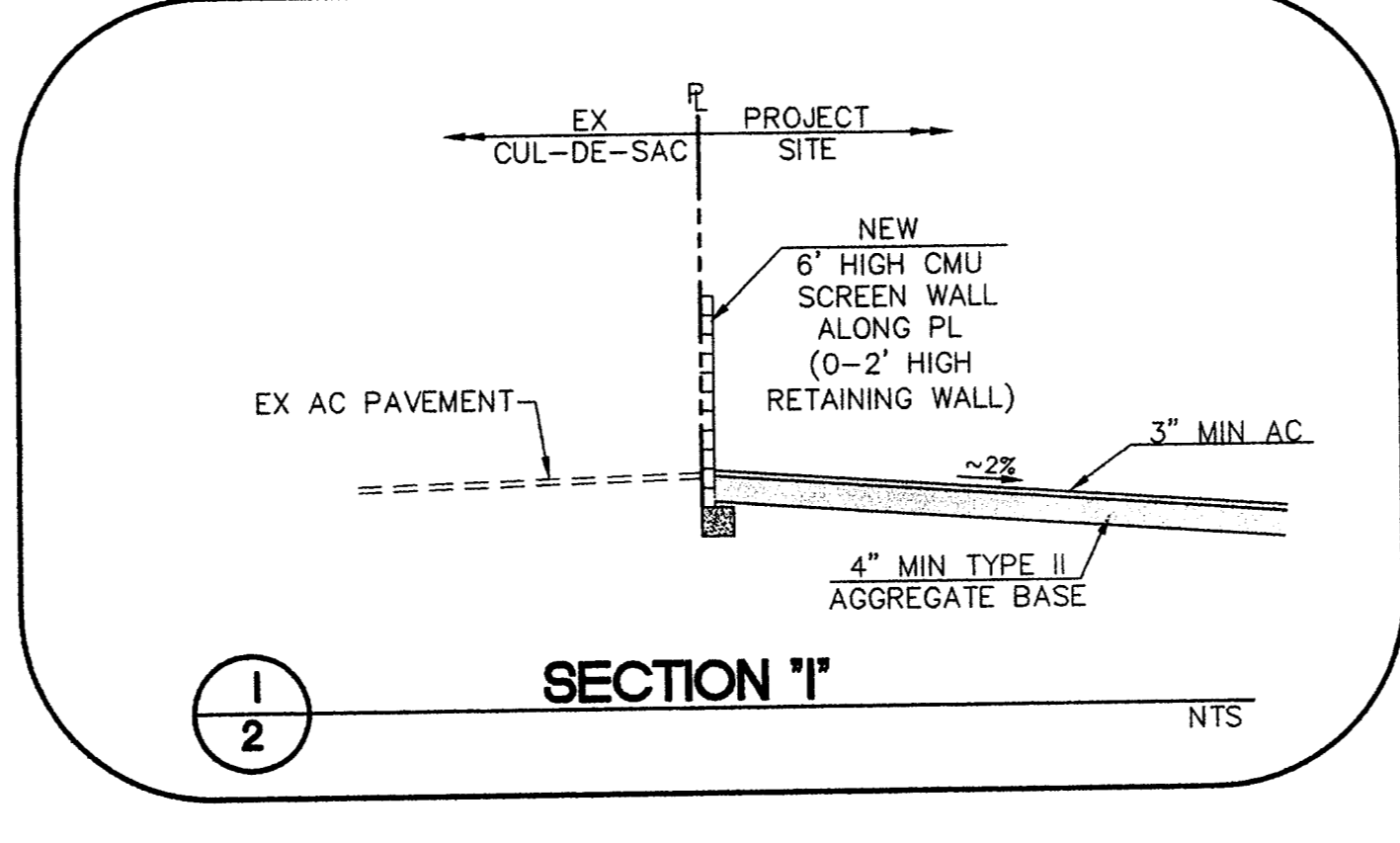
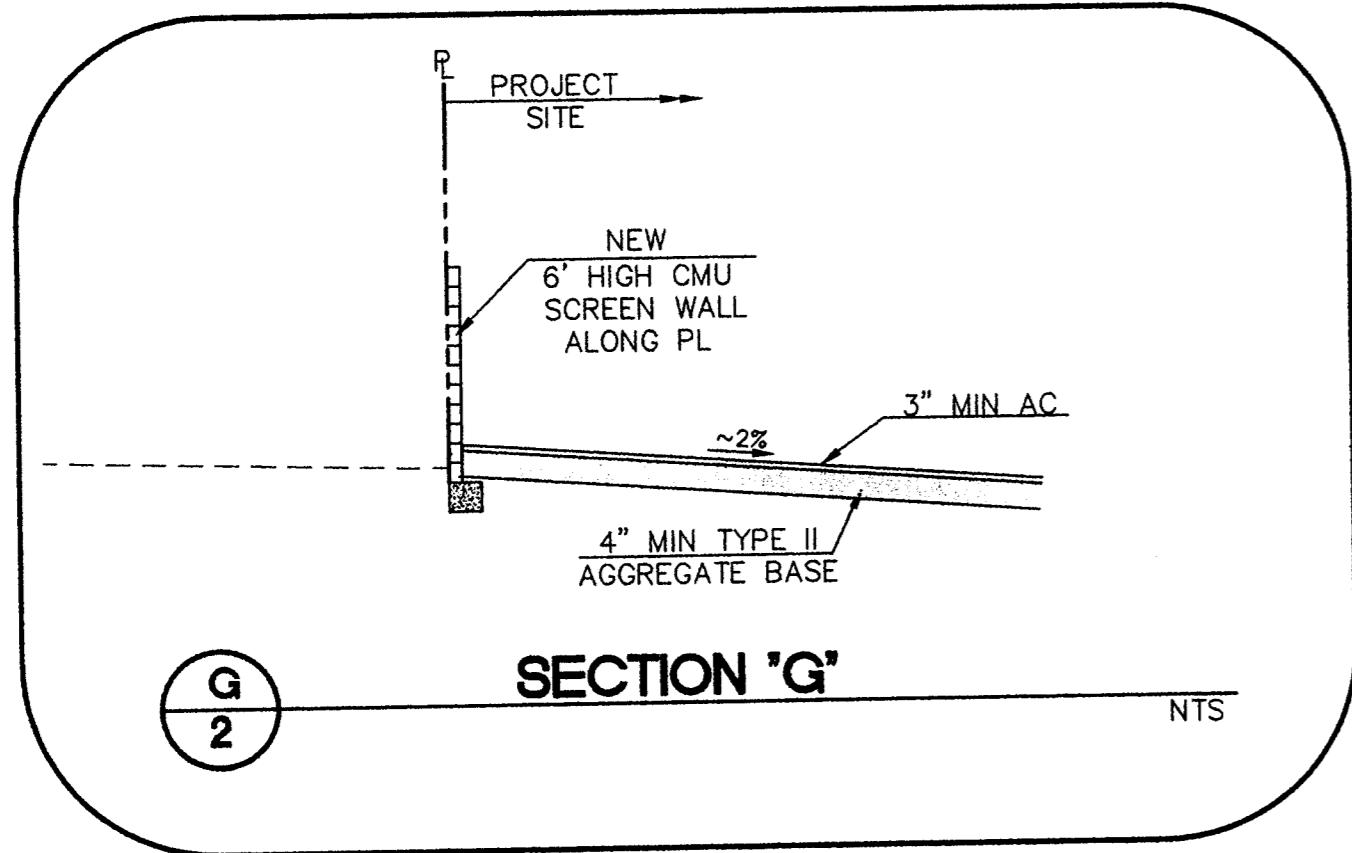
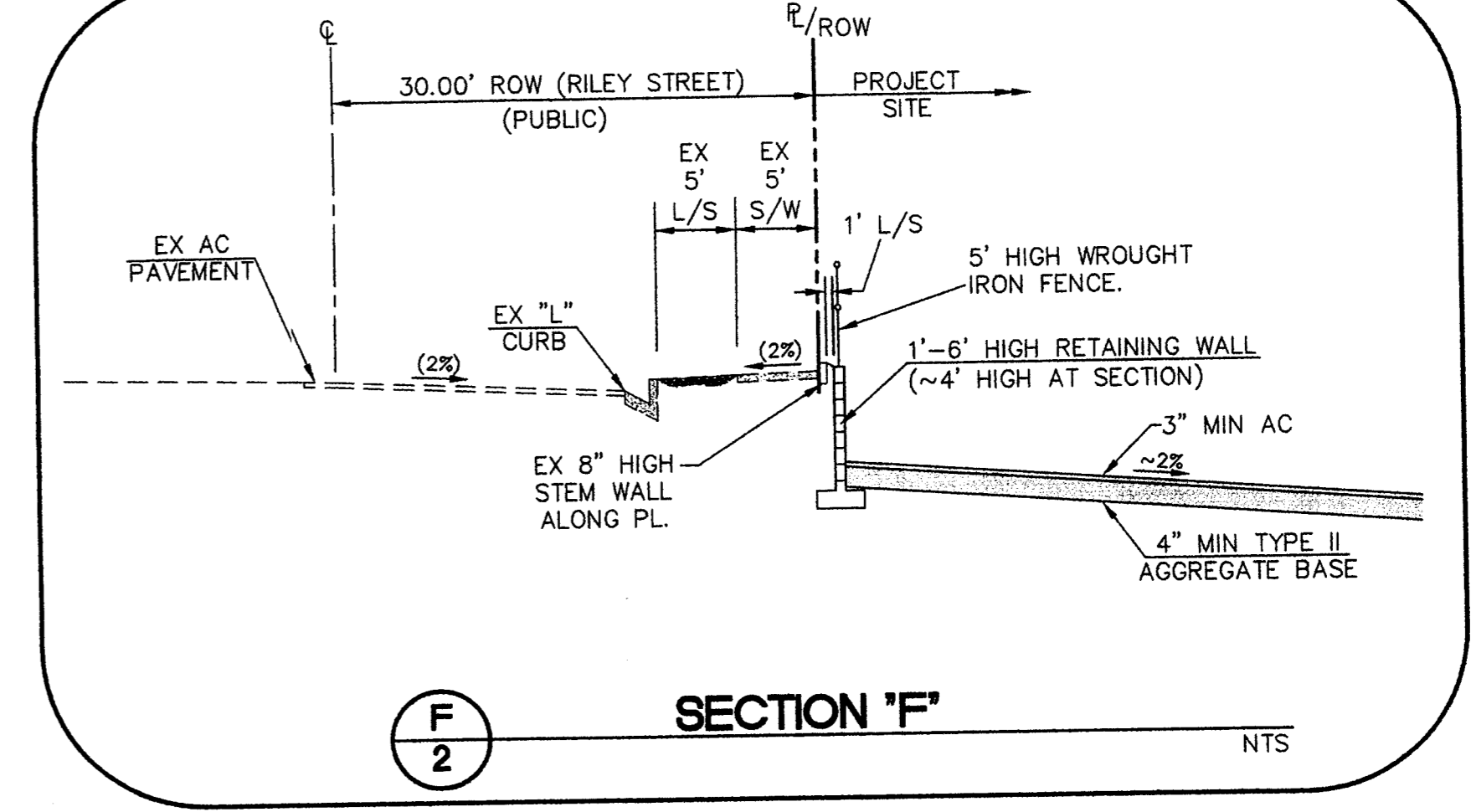
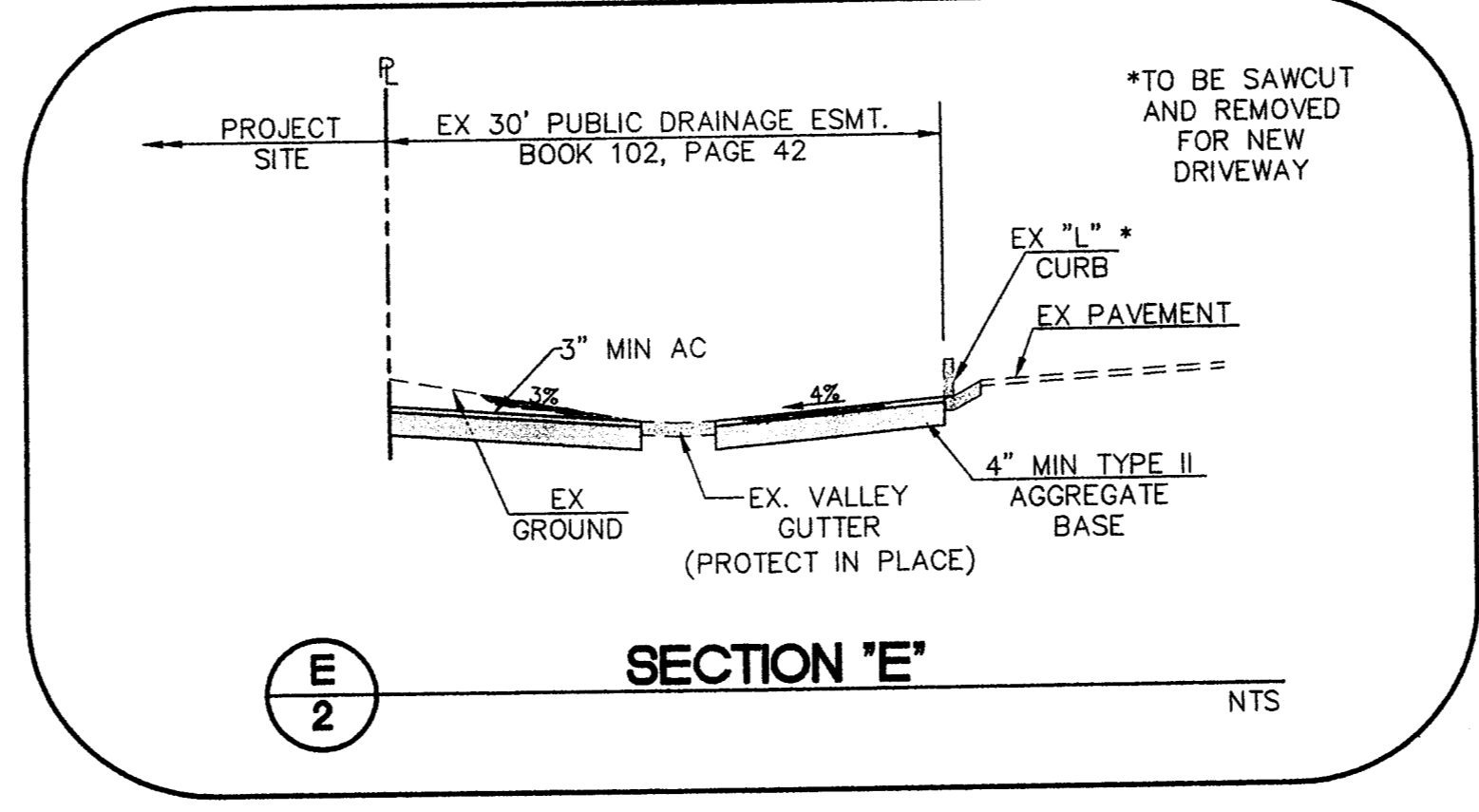
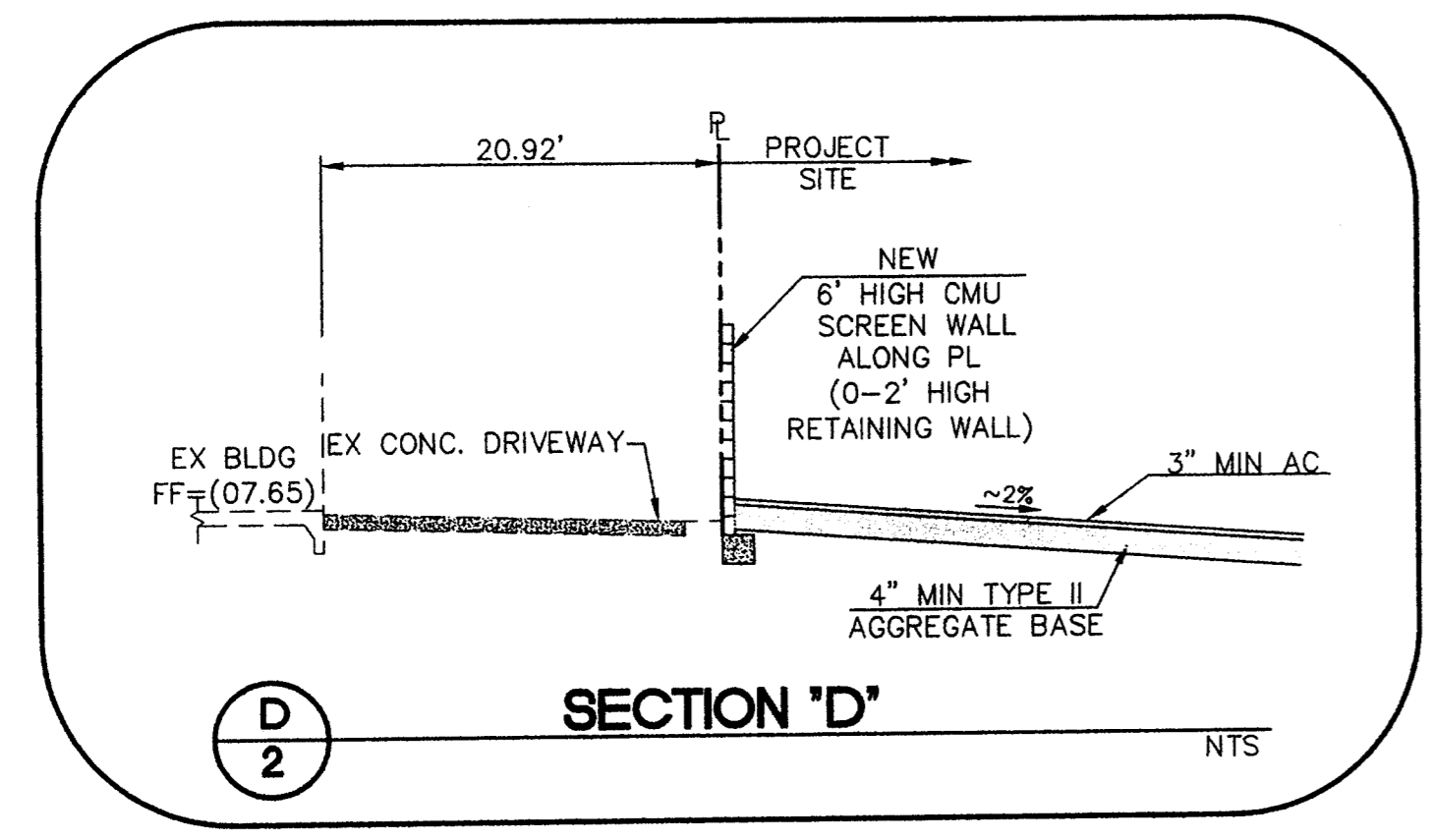
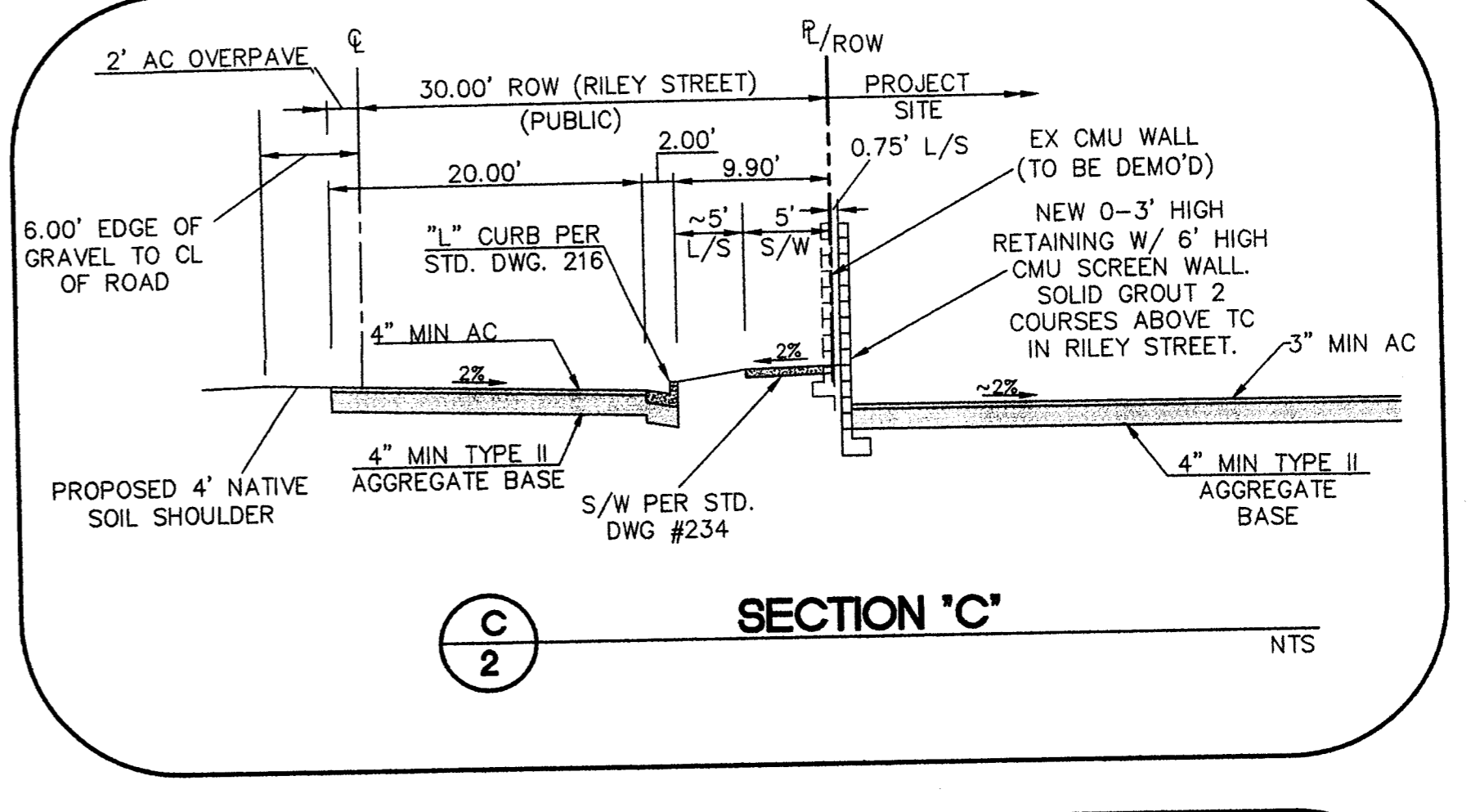
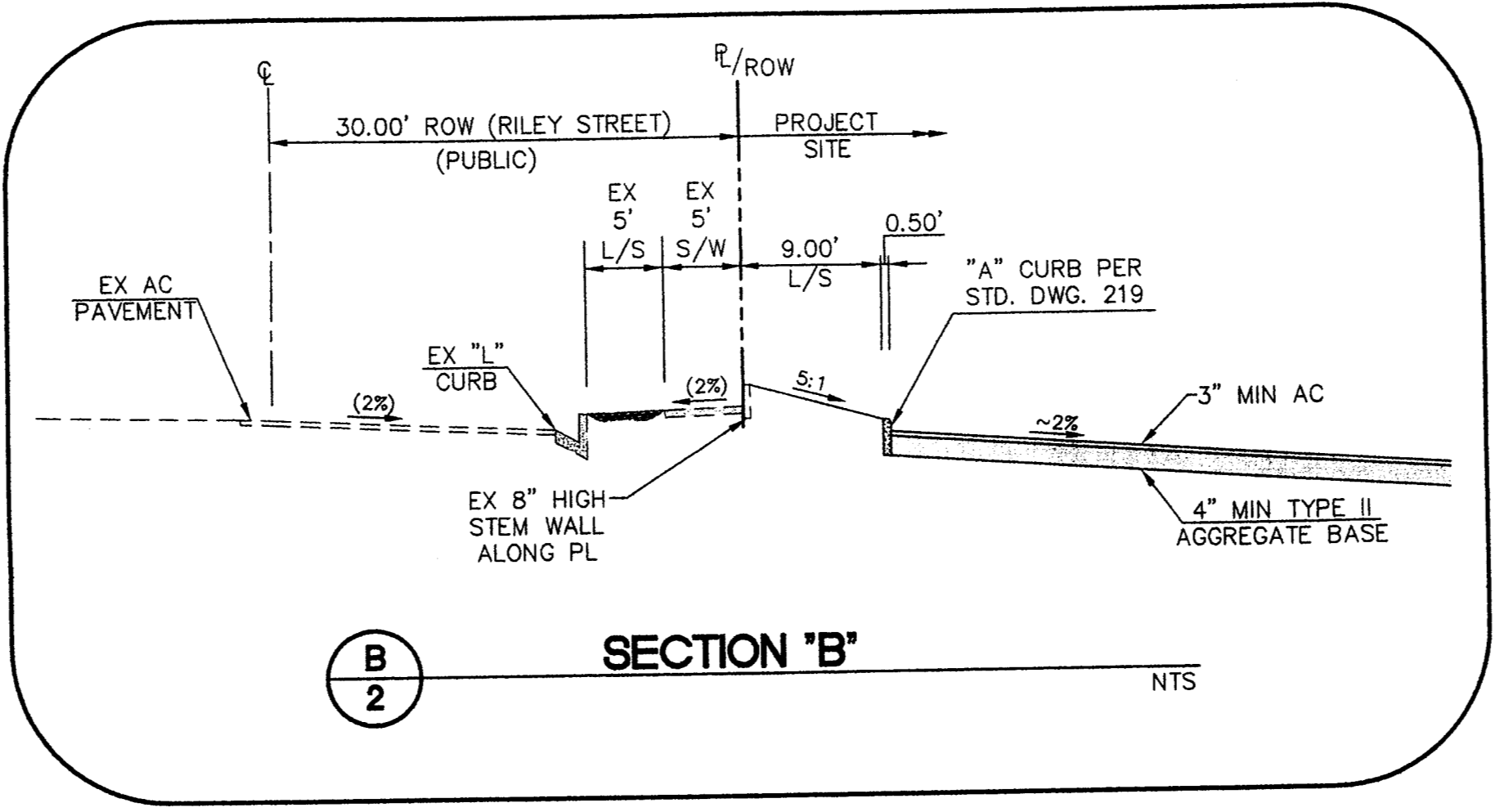
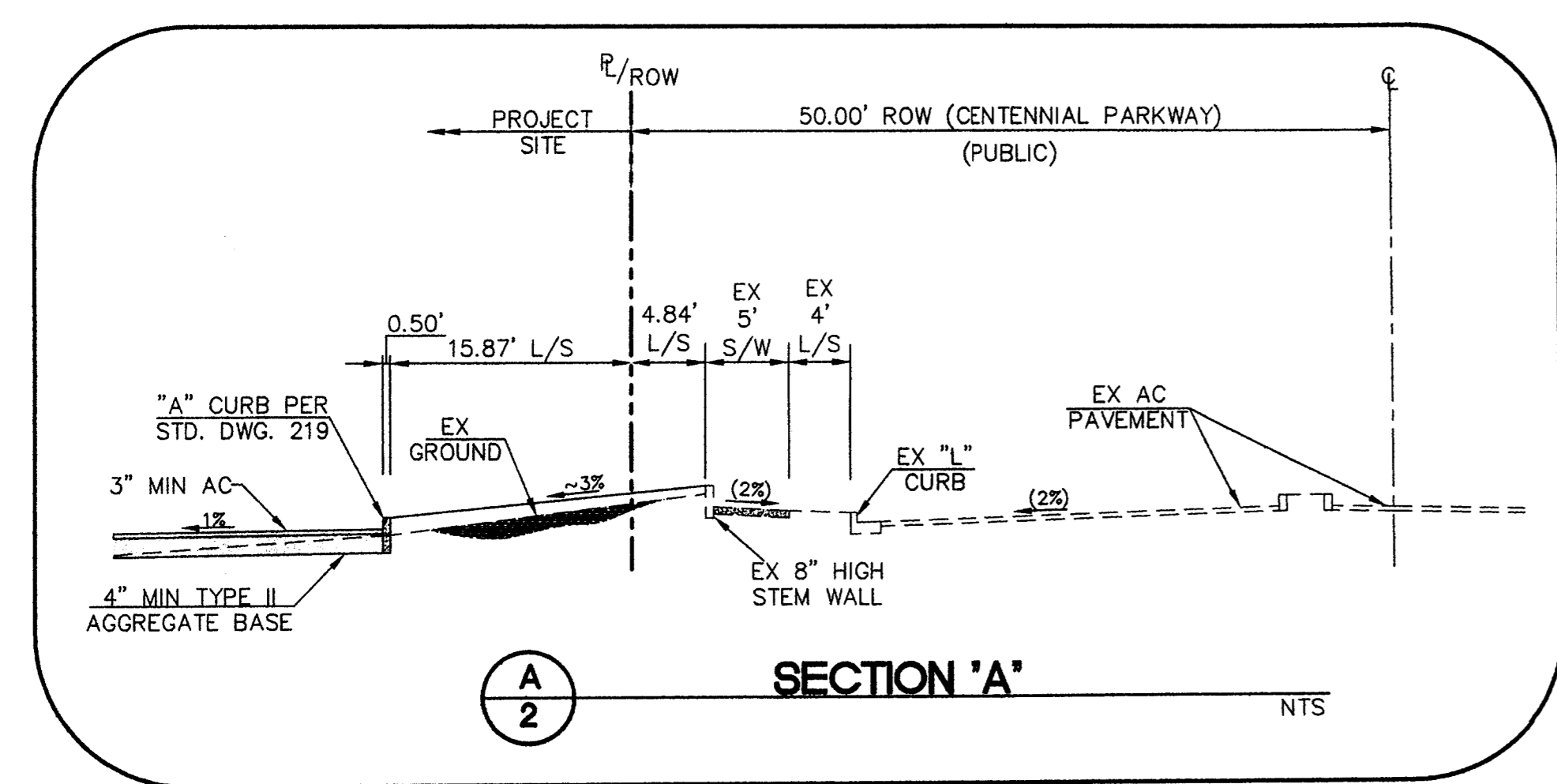
NO.	DATE	REVISIONS DESCRIPTION



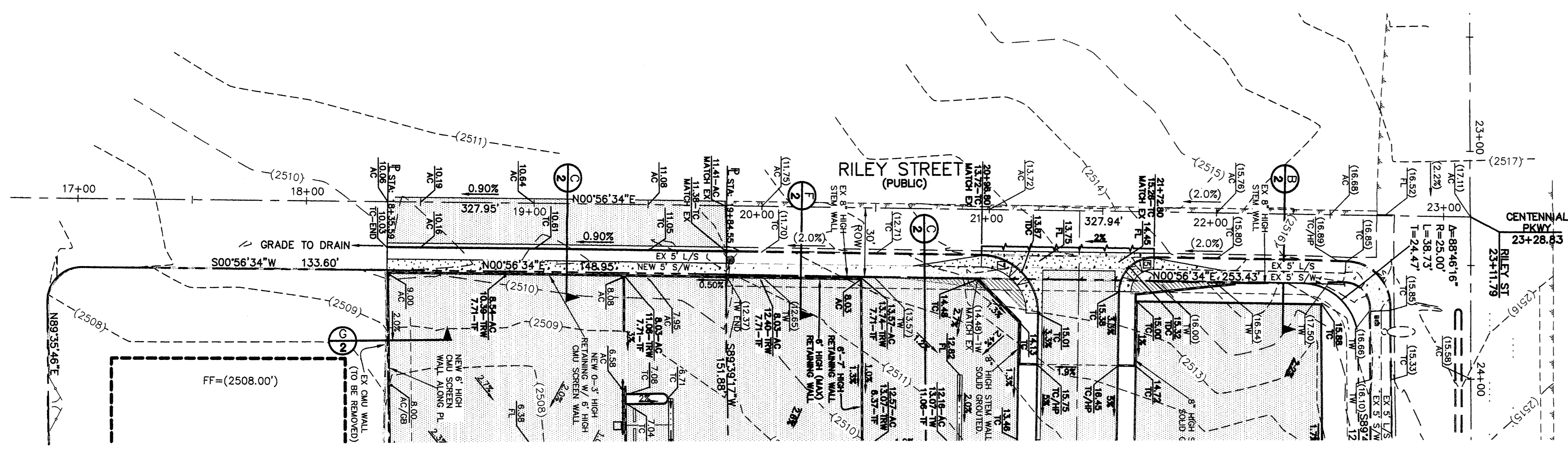
DWYER ENGINEERING, INC.
 WATER RIGHTS
 LAND USE PLANNING
 LAND SURVEYING
 CIVIL ENGINEERING
 7830 SMOKE HANZE RD., SUITE B
 LAS VEGAS, NEVADA 89128
 TEL: (702) 254-2800
 FAX: (702) 254-2826

DETAIL SHEET
JIM MARSH CHRYSLER JEEP
 8555 W. CENTENNIAL PARKWAY
 CITY OF LAS VEGAS, NEVADA

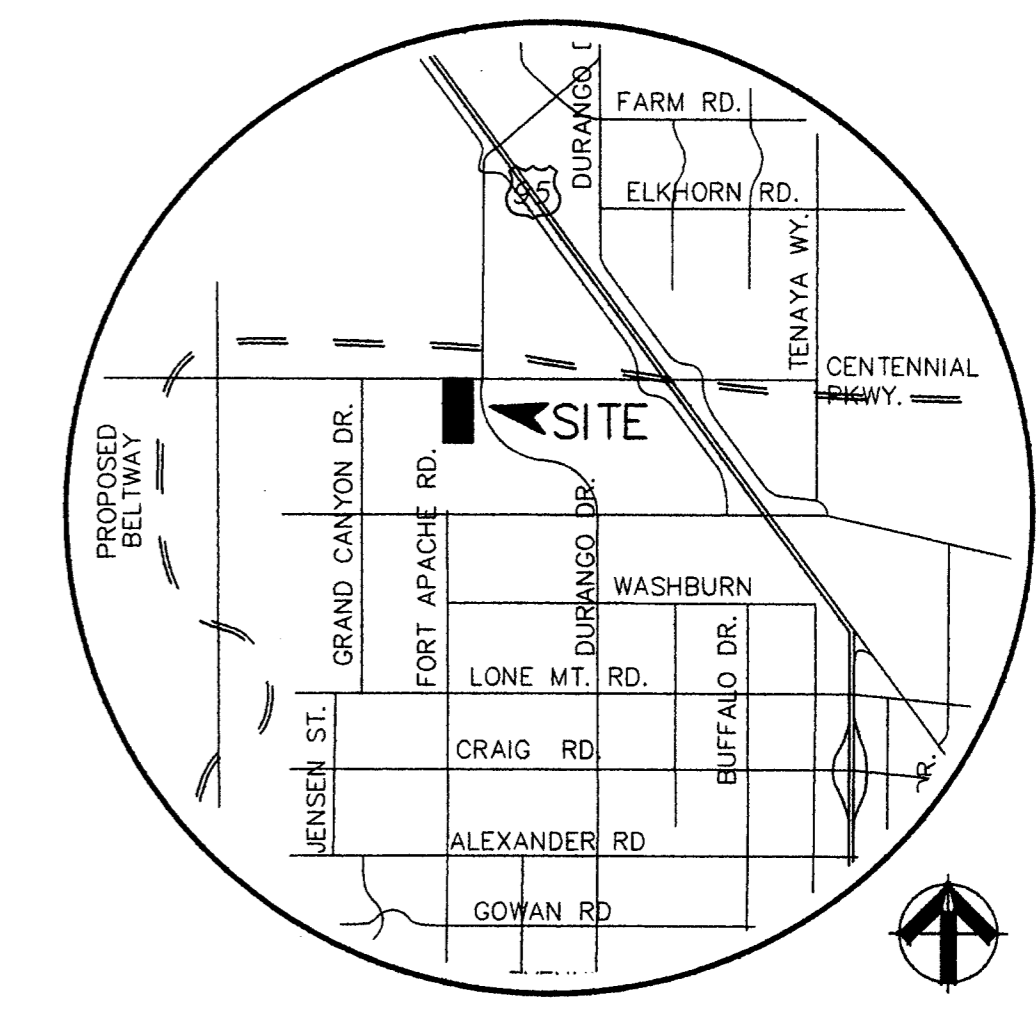
JOB No. 10031
 DATE 04/05/11
 VERT. SCALE: N/A
 HORIZ. SCALE: N/A
 DRAWN BY: JR/MGI
 CHECKED BY: DAD
 SHEET 2 of 6



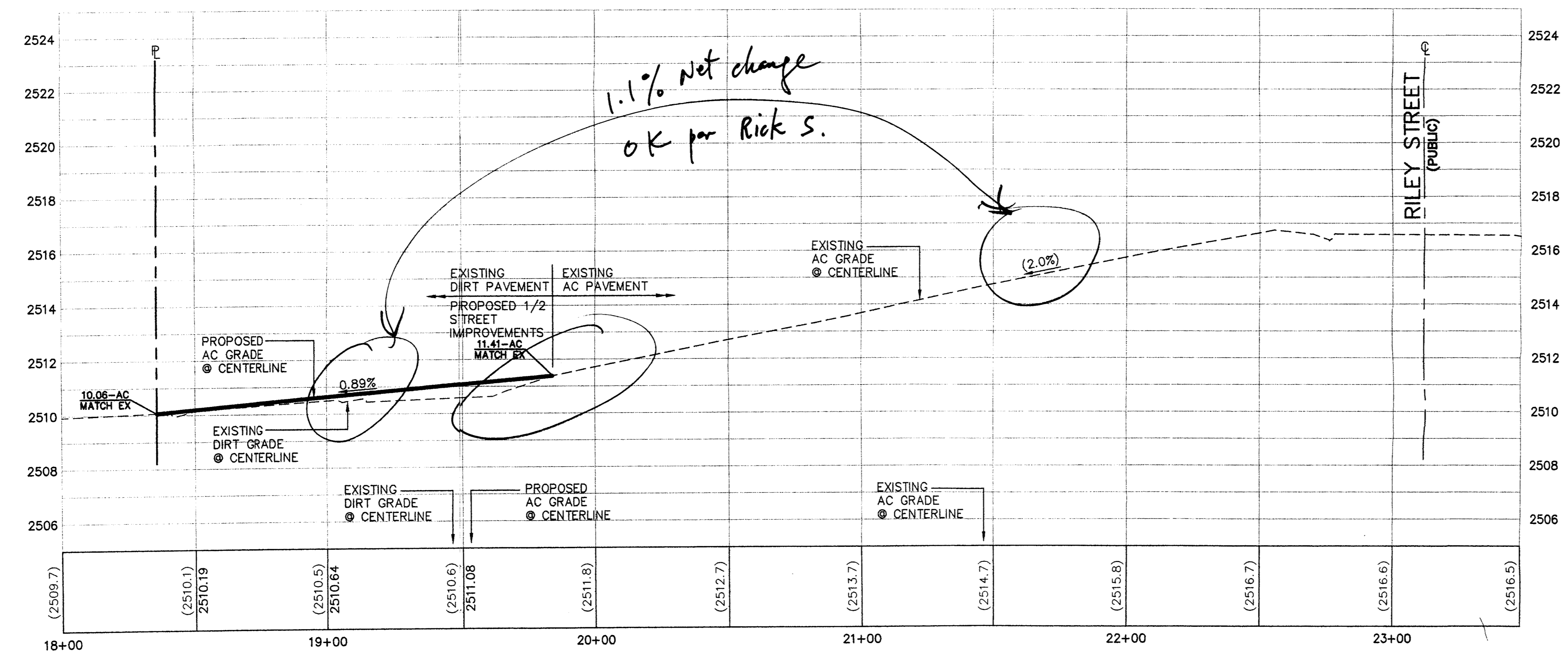
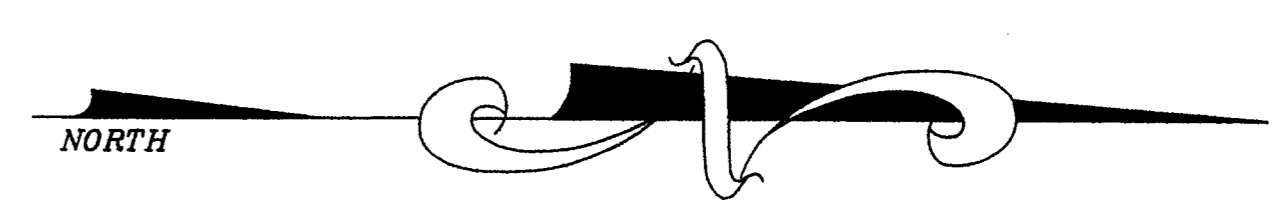
This grading plan is a part of drainage study #4311 which was received on 4/7/11 and Appl of 4/21/11. Page 2 of 4



PLAN- RILEY STREET
HORIZONTAL SCALE: 1" = 30'

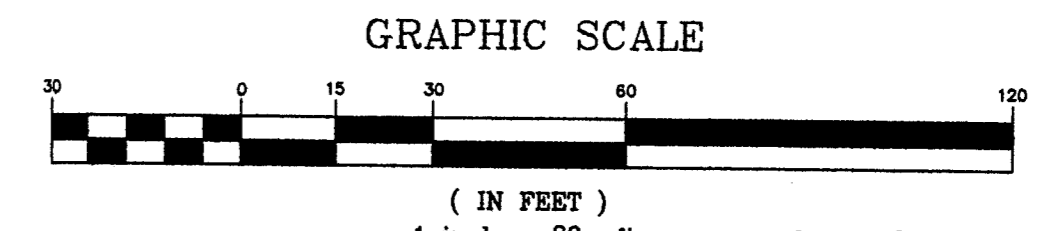


VICINITY MAP
T19S/ R60E/ SEC 29
SCALE: NONE



PROFILE- RILEY STREET
HORIZONTAL SCALE: 1" = 30'
VERTICAL SCALE: 1" = 3'

SEE SHEET #5 FOR GRADING CONSTRUCTION NOTES



This grading plan is a part of drainage study # 4311 which was received on 4/7/11 and Appl'd on 4/21/11. Page 3 of 4

BENCHMARK
CLARK COUNTY VERTICAL CONTROL v.2003
BENCHMARK No. 2290 29INES 2002
A RIVET AND ROUND ALUMINUM PLATE ON A CONCRETE ELECTRIC PAD, SOUTHWEST CORNER OF DURANGO DRIVE AND CENTENNIAL PARKWAY.
NAVD88 ELEVATION 758.585 METERS (2488.79 FEET)

BASIS OF BEARING
NORTH 89°42'50" EAST, BEING THE NORTH LINE OF THE NORTHEAST QUARTER (NE 1/4) OF SECTION 29, TOWNSHIP 20 SOUTH, RANGE 60 EAST, M.D.M., CLARK COUNTY, NEVADA AS SHOWN IN BOOK 102 OF PLAT MAPS, PAGE 42 IN THE OFFICE OF THE CLARK COUNTY, NEVADA RECORDER.

SVZ NOTE
NOTE: NO STRUCTURE, VEGETATION, OR OBJECT OF ANY KIND IS PERMITTED OVER TWENTY-FOUR (24) INCHES IN HEIGHT (MEASURED FROM THE TOP OF THE ADJACENT CURB IF CURB EXISTS) WITHIN THE SIGHT VISIBILITY ZONES.

Job No. 10031	
DATE: 04/05/11	
VERT. SCALE: 1"=3'	
HORIZ. SCALE: 1"=30'	
DRAWN BY: JR/MGI	
CHECKED BY: DAD	
SHEET 6 of 6	

<p>REUSE OF DOCUMENTS THIS DOCUMENT, AND THE IDEAS AND CONCEPTS INCORPORATED HEREIN, IS AN INSTRUMENT OF PROFESSIONAL SERVICE AND IS NOT TO BE REUSED OR REPRODUCED IN ANY MANNER BY ANY OTHER PROJECT WITHOUT THE WRITTEN APPROVAL OF DWYER ENGINEERING, INC.</p>							
<p>APPROVED</p>							
<p>REVISIONS</p> <table border="1"> <tr> <th>NO.</th> <th>DATE</th> <th>DESCRIPTION</th> </tr> <tr> <td> </td> <td> </td> <td> </td> </tr> </table>		NO.	DATE	DESCRIPTION			
NO.	DATE	DESCRIPTION					
<p>STATE OF NEVADA JIM MARSH DIVER CIVIL No. 7177 Exp. 12/31/17</p>							
<p>DWYER ENGINEERING, INC. CIVIL ENGINEERING LAND SURVEYING LAND USE PLANNING 7330 SMOKE RANCH RD., SUITE B LAS VEGAS, NEVADA 89158 Tel: (702) 254-2200 Fax: (702) 254-2206</p>							
<p>GRADING PLAN JIM MARSH CHRYSLER JEEP 8555 W. CENTENNIAL PARKWAY CITY OF LAS VEGAS, NEVADA APN 125-29-29-510-028 APN 125-29-29-510-029 APN 125-29-29-510-015</p>							

