

DEVIATIONS

1. NONE

BENCHMARK

DESCRIPTION	NAVD 88 DATUM	NAVD 88 DATUM
BLV99 13EA RIVET AND PLATE IN CONCRETE CYLINDER AT THE NORTHWEST CORNER OF HUALAPAI WAY AND FARM ROAD.	2860.79 (FEET)	871.971 (METERS)

BASIS OF BEARINGS

SOUTH 00 19'04" EAST BEING THE BEARING OF THE EAST LINE OF THE SOUTHEAST QUARTER (SE 1/4) OF SECTION 13, TOWNSHIP 19 SOUTH, RANGE 59 EAST, M.D.M., CLARK COUNTY, NEVADA.

INDEX OF DRAWINGS

- COVER SHEET
- PROJECT NOTES SHEET I
- PROJECT NOTES SHEET II
- MASTER UTILITY PLAN
- GRADING PLAN I
- GRADING PLAN II
- GRADING PLAN III
- DETAILS I
- DETAILS II
- DETAILS III
- MERIMACK OAKS ST. PLAN & PROFILE
- MARBURY ST. PLAN & PROFILE I
- MARBURY ST. PLAN & PROFILE II
- MARIWEATHER GROVE AVE. PLAN & PROFILE
- BULL RUN GROVE AVE. AND DARRROW CT. PLAN & PROFILE
- TARBELL GROVE AVE. PLAN & PROFILE
- UTILITY PLAN I
- UTILITY PLAN II
- UTILITY PLAN III
- STREETLIGHT and TRAFFIC CONTROL PLAN I
- STREETLIGHT and TRAFFIC CONTROL PLAN II
- STREETLIGHT and TRAFFIC CONTROL PLAN III

CONSTRUCTION NOTES

- ALL BARRICADING AND TEMPORARY TRAFFIC CONTROL DEVICES OR METHODS USED DURING CONSTRUCTION SHALL BE IN ACCORDANCE WITH THE "NEVADA TRAFFIC CONTROL MANUAL," MOST RECENT EDITION, PUBLISHED BY THE STATE OF NEVADA, DEPARTMENT OF HIGHWAYS, EXCEPT AS OTHERWISE PROVIDED IN THE CONTRACT SPECIFICATIONS OR AS REQUIRED BY THE ENGINEER.
- AT THE TIME OF PRE-CONSTRUCTION CONFERENCE, THE CONTRACTOR SHALL FURNISH, FOR APPROVAL, A TRAFFIC BARRICADING PLAN AND METHOD OF MAINTAINING PUBLIC CONVEYANCE AND SAFETY THROUGHOUT THE CONSTRUCTION AREA. TRAFFIC BARRICADING PLANS SHALL COMPLY WITH APPLICABLE PORTIONS OF SECTIONS 624 AND 625 OF THE STANDARD SPECIFICATIONS, THE TRAFFIC CONTROL MANUAL AND APPLICABLE CITY ORDINANCES.
- THE CONTRACTOR SHALL BE RESPONSIBLE FOR THE VERTICAL ADJUSTMENT OF EXISTING SANITARY, WATER AND STORM SEWER MANHOLES TO THE FINAL FINISH GRADES AS NOTED ON THE CONTRACT DRAWINGS, AND IN ACCORDANCE WITH SECTION 609 OF THE STANDARD SPECIFICATIONS, AND ANY VERTICAL ADJUSTMENTS OF WATER VALVE BOXES AND OTHER APPURTENANCES SHALL BE IN ACCORDANCE WITH THE DETAILS SHOWN ON THE CONTRACT DRAWINGS.
- NOTICE: GRADING AUTHORIZED ONLY AFTER PERMITTEE'S FULL COMPLIANCE WITH FEDERAL ENDANGERED SPECIES ACT.
- THE DESIGN GRADE (DG) INDICATED ON THESE PLANS IS FOR VERTICAL ELEVATION DESIGN CALCULATION PURPOSES AND DOES NOT NECESSARILY REPRESENT THE FINISHED IMPROVEMENT GRADES @ CENTERLINE, (I.E. THROUGH MEDIAN AREAS).
- ALL EXISTING UTILITY CROSSINGS MUST BE VERIFIED PRIOR TO CONSTRUCTION OF ANY MAIN LINES OR LATERALS THAT MAY BE ADVERSELY EFFECTED. ANY DISCREPANCIES IN LOCATION AND/OR ELEVATION MUST BE PROVIDED TO THE ENGINEER FOR ACCEPTANCE PRIOR TO CONSTRUCTION.
- TOPOGRAPHY SHOWN HEREIN REFLECTS ORIGINAL EXISTING TOPOGRAPHY.
- ALL COMMON LOTS AS SHOWN HEREIN TO BE PRIVATELY MAINTAINED BY THE H.O.A.
- ALL WATER LINE GATE VALVES, SERVICE GATE VALVES, AND FIRE HYDRANT GATE VALVES ARE TO BE CONSTRUCTED UNDER A.C. PAVEMENT. IT IS THE CONTRACTORS RESPONSIBILITY TO VERIFY THAT ALL WATER VALVES CANS DO NOT CREATE CONFLICTS WITH THE PROPOSED CURB LINE PRIOR TO PLACEMENT OF CONCRETE. ALL WATER FACILITIES SHOWN IN THESE DRAWINGS HAVE BEEN "SCALED-UP" FOR CLARITY ONLY.

NOTE
THIS SET OF DRAWINGS IS BASED UPON NAVD 88 DATUM. PREVIOUS DRAWINGS MAY BE BASED ON OTHER DATUM. CARE SHOULD BE OBSERVED WHEN UTILIZING THIS SET OF DRAWINGS.

STREET QUANTITIES (PUBLIC)

STREETS	11913 S.Y.	1955 C.Y.	5946 L.F.	2926 S.F.	2630 S.F.
2" A.C. PAVEMENT					
TYPE II BASE AGGREGATE					
30" ROLL CURB					
CONCRETE VALLEY GUTTER					
4 INCH CONCRETE SIDEWALK					

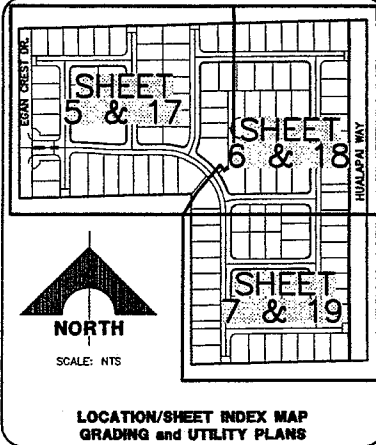
STREET LIGHTS

SINGLE ARM ST. LT.	20 EA.
CONDUIT	2919 L.F.

LEGEND

- REVISION NUMBER
- EXISTING FEATURES
- FUTURE IMPROVEMENTS
- PROPERTY LINE/LANDSCAPE LINE
- CENTERLINE
- EXISTING CONTOUR
- SPOT ELEVATION, GRADE BREAK, TC
- FUTURE SPOT ELEVATION
- STREET LIGHT (STLT)
- EDGE OF PAVEMENT
- RETAINING WALL (SEE GRADING PLAN)
- SIDEWALK RAMP
- 8' CROSS GUTTER
- SEWER BACK WATER VALVE
- 0' LIP DRIVEWAY
- PROPOSED CONTOUR

NOTE: SEE UTILITY LEGEND AND ABBREVIATIONS ON SHEETS 17-19.



LEGEND & ABBREVIATIONS

- DRAWING NUMBER FOR DETAIL DRAWN ON SAME SHEET
- DRAWING NUMBER FOR DETAIL WITH REFERENCE TO THE SHEET IT IS DRAWN ON
- DRAWING NUMBER(S) FOR DETAIL(S) PER UNIFORM STANDARD DRAWINGS OR PER STANDARDS IN ABBREVIATION TABLE
- INDICATES CONSTRUCTION NOTE
- INDICATES REMOVAL NOTE
- INDICATES CURVE NUMBER
- INDICATES SEWER MANHOLE IN PROFILE
- INDICATES STORM DRAIN MANHOLE IN PROFILE
- EXIST. SPOT ELEVATION
- END PIPE & PLUG
- CONCRETE ENCASUREMENT
- EXISTING CALICHE BOULDERS
- EXISTING ROUGH GRADING

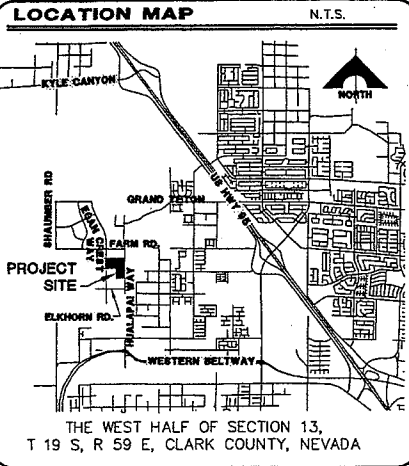
- EMBANKMENT**
- TOP
 - PROPOSED 2:1 SLOPE
 - BOTTOM
 - BY SEPARATE CONTRACT
 - EXISTING

- ABBREVIATIONS**
- W = WATER
 - S = SEWER
 - SD = STORM DRAIN
 - SL = STREET LIGHTING
 - SMH = SEWER MANHOLE
 - SDMH = STORM DRAIN MANHOLE
 - CLV = CITY OF LAS VEGAS
 - LVVWD = LAS VEGAS VALLEY WATER DISTRICT
 - NDOT = NEVADA DEPT. OF TRANSPORTATION
 - UDS = UNIFORM DESIGN AND CONSTRUCTION STANDARDS (UDACS)
 - USD = UNIFORM STANDARD DWGS. (CLARK COUNTY)
 - CCWRD = CLARK COUNTY WATER RECLAMATION DISTRICT

NOTE: LEGEND & ABBREVIATIONS IN UNIFORM STANDARD DRAWINGS, LATEST EDITION, WILL BE UTILIZED FOR ANY LEGEND AND ABBREVIATIONS REQUIRED WHICH ARE NOT SHOWN.

Call before you Dig
1-800-227-2600
UNDERGROUND SERVICE (USA)

Avoid hitting overhead power lines. It's costly.
CALL BEFORE YOU DO OVERHEAD
CALL 1-702-227-2929



CONSTRUCTION NOTES

- ROADWAY**
- INSTALL A.C. PAVEMENT PER TYPICAL STREET SECTIONS, SEE SHEET 8.
 - INSTALL 6" L" TYPE CURB & GUTTER
 - VERIFY LOCATION AND ELEVATION OF EXISTING ROADWAY IMPROVEMENT AND MATCH TO EXISTING CONDITION.
 - INSTALL "A" TYPE ISLAND CURB
 - INSTALL 8' CROSS GUTTER
 - INSTALL HANDICAP RAMP CURB DEPRESSION SEE PLAN AND PROFILES FOR RAMP DATA
 - CONSTRUCT 4" CONC. SIDEWALK SEE SECTIONS ON SHEET 9
 - NOT USED
 - INSTALL 30" ROLL CURB

- WATER**
- INSTALL 3/4" WATER METER
 - INSTALL 8"x8" TEE
 - INSTALL 8" CROSS
 - INSTALL 12"x8" REDUCER
 - INSTALL 5" BEND W/ RESTRAINT JOINT
 - INSTALL 11-1/4" BEND
 - INSTALL 22-1/2" BEND
 - INSTALL 45" BEND
 - INSTALL 90" BEND
 - INSTALL CAP W/ 2" BLOW-OFF ASSEMBLY
 - INSTALL FIRE HYDRANT ASSEMBLY
 - INSTALL 5/8" METER WITH 1" RPPA
 - INSTALL 3/4" METER WITH 1" RPPA
 - REMOVE CAP AND BLOW OFF PER UDACS PLATE NO. 4A. NOTE NO. 1, AND CONNECT TO EXISTING MAIN. (CONTRACTOR TO VERIFY SIZE, INVERT, AND LOCATION OF EX WATER LINE PRIOR TO CONSTRUCTION).
 - INSTALL 8" GATE VALVE & BOX
 - NOT USED
 - INSTALL 8"x6" REDUCER

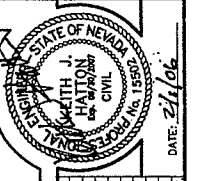
- SEWER**
- INSTALL 48" DIA. SEWER MANHOLE
 - INSTALL ENDCAP AND MARKER
 - REMOVE PLUG & CONNECT TO EX SEWER LINE (CONTRACTOR TO VERIFY SIZE, INVERT, AND LOCATION OF EX SEWER LINE PRIOR TO CONSTRUCTION).
 - INSTALL 4" SEWER WYE & LATERAL & MARKER
 - INSTALL 60" DIA. DEEP MANHOLE

- STORM DRAIN**
- INSTALL TYPE I 60" ACCESS STORM DRAIN MANHOLE
 - INSTALL TYPE III STORM DRAIN MANHOLE
 - INSTALL TYPE II STORM DRAIN MANHOLE
 - INSTALL MODIFIED TYPE "C" DROP INLET
 - INSTALL TEMPORARY PLUG
 - REMOVE PLUG & CONNECT TO EX STORM DRAIN LINE (CONTRACTOR TO VERIFY SIZE, INVERT, AND LOCATION OF EX STORM DRAIN LINE PRIOR TO CONSTRUCTION)
 - INSTALL 2' X 2' JENSEN PRECAST DROP INLET

- IRRIGATION**
- BANK "A": 2-4" AND 1-6" SCHD. 40 PVC

LEGAL DESCRIPTION
LOT 114 OF BLOCK 7 AS SHOWN BY MAP OF "CLIFFS EDGE PARENT" ON FILE IN BOOK 118, PAGE 88 OF PLATS IN THE COUNTY RECORDER'S OFFICE, CLARK COUNTY, NEVADA, LYING WITHIN THE SOUTHEAST QUARTER (SE 1/4) OF SECTION 13, TOWNSHIP 19 SOUTH, RANGE 59 EAST, M.D.M., CLARK COUNTY, NEVADA.

APPROVAL:
LAS VEGAS VALLEY WATER DISTRICT PROJ # _____ DATE _____
CLV DRAWING NO. _____



G. C. WALLACE, INC.
Engineers/Planners/Surveyors
1555 SOUTH RAINBOW BLVD., LAS VEGAS, NEVADA 89146
TELEPHONE: (702) 867-2600 FAX: (702) 867-2299
E-MAIL: GWallace@wallaceinc.com

TOLL BROTHERS
PROJECT NOTES SHEET I

MADISON GROVE AT PROVIDENCE - PHASE 3 (POD 14)
A RESIDENTIAL PLANNED DEVELOPMENT

ISSUE DATE: 02/01/06 ISSUED FOR TECHNICAL DRAINAGE STUDY SUBMITTAL

DATE LASEN: APP DATE: 02/01/06
REV. DATE: 08/07/06
PLOT TIME: 08/07/06

DRAWING NO. 2
JOB NO. 743194
2 OF 22 SHTS

CITY OF LAS VEGAS GENERAL NOTES

- 1. ALL CONSTRUCTION AND MATERIALS SHALL BE IN ACCORDANCE WITH THE "UNIFORM STANDARD SPECIFICATIONS FOR PUBLIC WORKS CONSTRUCTION OFF-SITE IMPROVEMENTS, CLARK COUNTY AREA NEVADA", LATEST EDITION...

CITY OF LAS VEGAS GRADING NOTES

- 1. IN THE EVENT THAT ANY UNFORESEEN CONDITIONS NOT COVERED BY THESE NOTES ARE ENCOUNTERED DURING GRADING OPERATIONS, THE OWNER/ENGINEER SHALL BE IMMEDIATELY NOTIFIED FOR DIRECTION.

Table with 4 columns: A. PAVEMENT AREA SUBGRADE, B. ENGINEERED FILL, HORIZONTAL, VERTICAL, COMPACTION. Values include 0.1+ and 0.5+.

- 7. ALL CUT AND FILL SLOPES SHALL BE PROTECTED UNTIL EFFECTIVE EROSION CONTROL HAS BEEN ESTABLISHED.

LAS VEGAS FIRE & RESCUE GENERAL NOTES

- 1. ALL WORK SHALL BE DONE IN STRICT ACCORDANCE WITH THE CITY OF LAS VEGAS FIRE DEPARTMENT'S ORDINANCE # 5667, "HYDRANT SPECIFICATIONS", AND "HYDRANT INSTALLATION SPECIFICATION".

CITY FIRE MARSHAL DATE
REVISED 03/19/04

LAS VEGAS VALLEY WATER DISTRICT (LVVWD) STANDARD NOTES

- 1. NO WORK SHALL BEGIN UNTIL THE WATER PLANS HAVE BEEN APPROVED FOR CONSTRUCTION BY THE LVVWD. FOLLOWING WATER PLAN APPROVAL, NOTICE SHALL BE GIVEN TO THE LVVWD COMMUNICATION SUPPORT CENTER (258-7171) TWO (2) WORKING DAYS PRIOR TO THE START OF CONSTRUCTION...

CITY OF LAS VEGAS STREETLIGHT NOTES

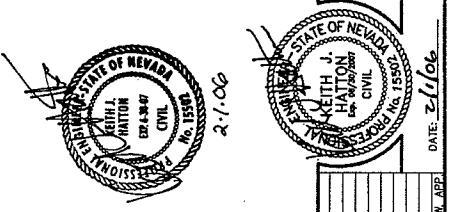
- 1. ALL STREET LIGHTING INSTALLATIONS SHALL BE IN ACCORDANCE WITH THE STREET LIGHTING PLANS, THE "UNIFORM STANDARD SPECIFICATIONS FOR PUBLIC WORKS CONSTRUCTION OFF-SITE IMPROVEMENTS, CLARK COUNTY AREA, NEVADA", LATEST REVISION...

CITY OF LAS VEGAS TRAFFIC NOTES

- 1. ALL CONSTRUCTION SIGNING, BARRICADING, AND TRAFFIC DELINEATION SHALL CONFORM TO THE "MANUAL ON UNIFORM TRAFFIC CONTROL DEVICES", LATEST EDITION.

CITY OF LAS VEGAS SEWER NOTES

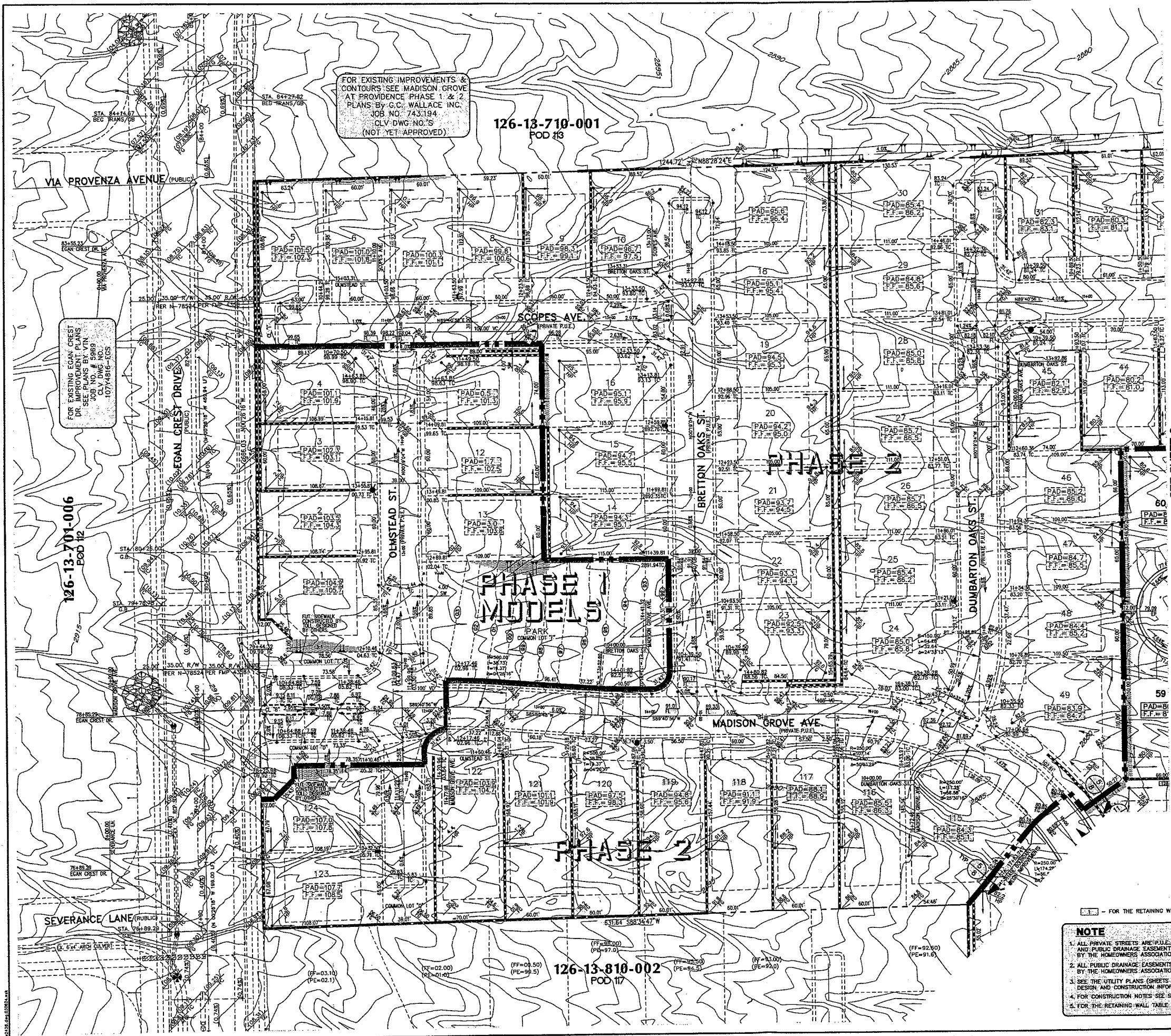
- 1. ALL CONSTRUCTION AND MATERIALS SHALL BE IN ACCORDANCE WITH THE LATEST EDITION OF THE DESIGN AND CONSTRUCTION STANDARDS FOR WASTEWATER COLLECTION SYSTEMS AND THE UNIFORM STANDARD SPECIFICATIONS FOR PUBLIC WORKS CONSTRUCTION OFF-SITE IMPROVEMENTS, CLARK COUNTY AREA, NEVADA, AS AMENDED.



G.C. WALLACE, INC. Engineers/Planners/Surveyors
1525 SOUTH RAINBOW BLVD./AS VEGAS, NEVADA 89146
(702) 884-2499 FAX (702) 884-2499

MADISON GROVE AT PROVIDENCE - PHASE 3 (POD 14) A RESIDENTIAL PLANNED DEVELOPMENT
PROJECT NOTES SHEET II
TOLL BROTHERS

APPROVED FOR CONSTRUCTION
LAS VEGAS VALLEY WATER DISTRICT PROJ # DATE
APPROVED FOR CONSTRUCTION
CITY OF LAS VEGAS FIRE DEPARTMENT DATE
CLV DRAWING NO.



FOR EXISTING IMPROVEMENTS & CONTOURS SEE MADISON GROVE AT PROVIDENCE PHASE 1 & 2 PLANS BY G.C. WALLACE, INC. JOB NO. 743-194 CLV DWG. NO. S (NOT YET APPROVED)

126-13-710-001
POD #13

FOR EXISTING EGAN CREST DR. IMPROVEMENT PLANS SEE PLANS BY VTN JULY DATE 1985 CLV DWG. NO. S 107-1418-1C5

126-13-701-006
POD #12

126-13-810-002
POD #17

ESTIMATED STORM DRAIN QUANTITIES

QUANTITIES ARE ESTIMATES ONLY. CONTRACTOR IS TO VERIFY DURING BIDDING PROCESS.

18" RCP	22 LF
24" RCP	335 LF
30" RCP	230 LF
36" RCP	66 LF
MANHOLE - 48" TYPE II	5 EA
MOD. TYPE "CM" DROP INLET (10')	2 EA
MOD. TYPE "CM" DROP INLET (7.5')	7 EA
2' x 2' JENSEN PRECAST DROP INLET	1 EA

ENGINEER'S EVALUATION OF GRADING QUANTITIES

PLEASE NOTE THESE QUANTITIES ARE ESTIMATES ONLY. ACTUAL QUANTITIES MAY DIFFER FROM THE ESTIMATE DUE TO SOIL VARIATIONS IN THE FIELD. VOLUMES CALCULATED WITHOUT SHRINKAGE OR SUBSIDENCE FACTORS AND DO NOT INCLUDE OVEREXCAVATION REQUIRED FOR THE REMOVAL OF CALICHE OR ANY OTHER UNSOUND MATERIALS. REFER TO THE SOILS REPORT FOR THESE AREAS. ALSO NOT INCLUDED ARE QUANTITIES FOR ADDITIONAL DITCHES & BERMS NOT SHOWN THAT MAY BE REQUIRED BY THE ENGINEER.

COMPUTED CUT VOLUME: 0 cys
COMPUTED FILL VOLUME: 0 cys
EXPORT: 0 cys

DRAINAGE CERTIFICATION

I CERTIFY THAT THIS GRADING PLAN IS IN CONFORMANCE WITH THE APPROVED DRAINAGE STUDY ON FILE WITH THE CITY OF LAS VEGAS, FOR THIS PROJECT.

Keith J. Hatton 2/1/06
KEITH J. HATTON, PE NO. 15502 DATE

BENCHMARK

BM #	DESC.	NAD 83 DATUM	NAD 83 DATUM
CLV BM NO. 1354	RIVET AND PLATE IN CONCRETE CYLINDER AT THE NORTHWEST CORNER OF RUALAPA WAY AND FARM ROAD	2860.79 (FEET)	871.971 (METERS)

BASIS OF BEARINGS

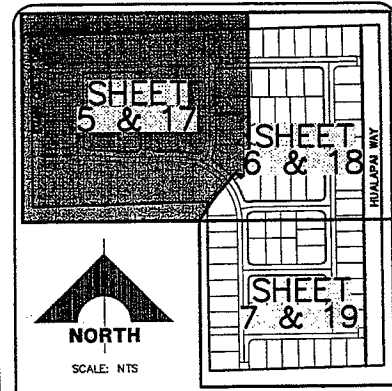
SOUTH 00°19'04" EAST BEING THE BEARING OF THE EAST LINE OF THE SOUTHEAST QUARTER (SE 1/4) OF SECTION 13, TOWNSHIP 19 SOUTH, RANGE 59 EAST, M.D.M., CLARK COUNTY, NEVADA.

LEGAL DESCRIPTION:

LOT 114 OF BLOCK 7 AS SHOWN BY MAP OF "CLIFFS EDGE PARENT" ON FILE IN BOOK 118, PAGE 88 OF PLATS IN THE COUNTY RECORDER'S OFFICE, CLARK COUNTY, NEVADA, LYING WITHIN THE SOUTHEAST QUARTER (SE 1/4) OF SECTION 13, TOWNSHIP 19 SOUTH, RANGE 59 EAST, M.D.M., CLARK COUNTY, NEVADA.

Call before you Dig
1-800-227-2600
UNDERGROUND SERVICE (USA)

CALL BEFORE YOU DO OVERHEAD
CALL 1-702-227-2929



- NOTE**
- ALL PRIVATE STREETS ARE FULL, PUBLIC SEWER EASEMENTS, AND PUBLIC DRAINAGE EASEMENTS TO BE PRIVATELY MAINTAINED BY THE HOMEOWNERS ASSOCIATION.
 - ALL PUBLIC DRAINAGE EASEMENTS TO BE PRIVATELY MAINTAINED BY THE HOMEOWNERS ASSOCIATION.
 - SEE THE UTILITY PLANS (SHEETS 17, 18, & 19) FOR WATER LINE DESIGN AND CONSTRUCTION INFORMATION.
 - FOR CONSTRUCTION NOTES SEE SHEET 2.
 - FOR THE RETAINING WALL TABLE SEE SHEET 10.

STATE OF NEVADA
KEITH J. HATTON
PE NO. 15502
DATE: 2/1/06

NORTH

SCALE: 1" = 40'

40 0 40 80
SCALE FEET

ISSUE DATE: 02/01/06 ISSUED FOR: TECHNICAL DRAINAGE STUDY SUBMITAL

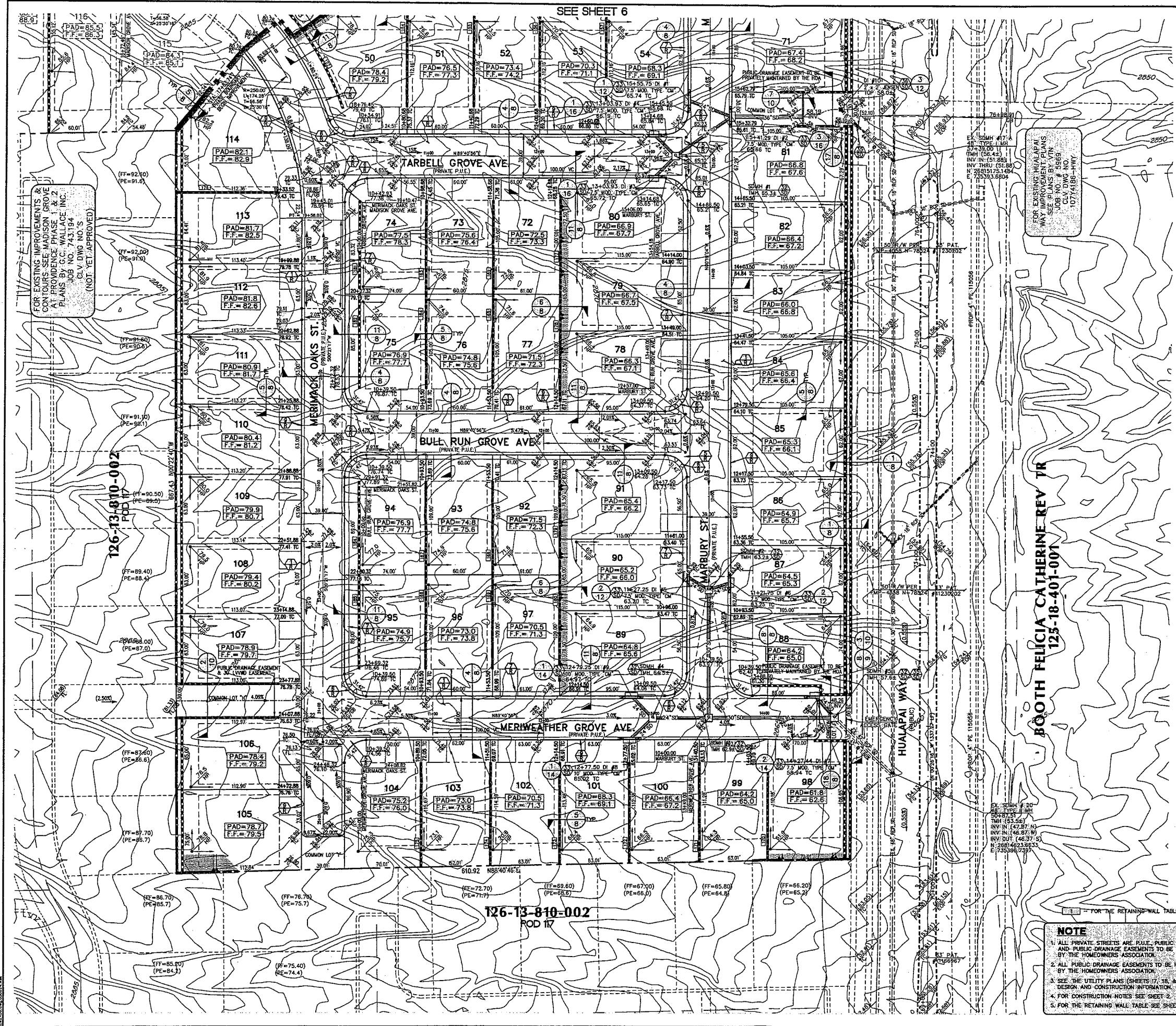
DESIGN: OFF
DRAWN: AM/ADY
CHECK: SMN
ISSUE DATE: 02/01/06
ISSUE BY: KEITH J. HATTON, PE NO. 15502
PLOT DATE: 02-01-06
PLOT TIME: 08:07:15

G.C. WALLACE, INC.
Engineers/Planners/Surveyors
1250 SOUTH TROVATI BLVD. SUITE 100
LAS VEGAS, NV 89146
PHONE: 702-799-8000 FAX: 702-799-8008

MADISON GROVE AT PROVIDENCE - PHASE 3 (POD #14)
A RESIDENTIAL PLANNED DEVELOPMENT
TOLL BROTHERS
GRADING PLAN I

DRAWING 5
5 OF 22 SHEETS

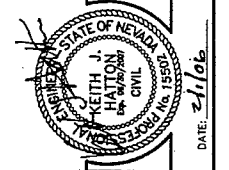
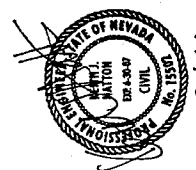
JOB NO. 743-194



SEE SHEET 6

FOR EXISTING IMPROVEMENTS & CONTOURS SEE MADISON GROVE AT PROVIDENCE PHASE 1 & 2 PLANS BY G.C. WALLACE, INC. JOB NO. 743194 CLV DWG NO. S (NOT YET APPROVED)

FOR EXISTING HUALAPAI WAY IMPROVEMENTS SEE PLANS BY ATN CLV DWG NO. S 1074188-HWY



ESTIMATED STORM DRAIN QUANTITIES

QUANTITIES ARE ESTIMATES ONLY. CONTRACTOR IS TO VERIFY DURING BIDDING PROCESS.

18" RCP	22 LF
24" RCP	335 LF
30" RCP	230 LF
36" RCP	66 LF
MANHOLE - 48" TYPE II	5 EA
MOD. TYPE "CM" DROP INLET (10')	2 EA
MOD. TYPE "CM" DROP INLET (7.5')	7 EA
2' x 2' JENSEN PRECAST DROP INLET	1 EA

ENGINEER'S EVALUATION OF GRADING QUANTITIES

PLEASE NOTE THESE QUANTITIES ARE ESTIMATES ONLY. ACTUAL QUANTITIES MAY DIFFER FROM THE ESTIMATE DUE TO SOILS VARIATIONS IN THE FIELD. VOLUMES CALCULATED WITHOUT SHRINKAGE OR SUBSIDENCE FACTORS AND DO NOT INCLUDE OVEREXCAVATION REQUIRED FOR THE REMOVAL OF CALICHE OR ANY OTHER UNDESIRABLE MATERIALS. REFER TO THE SOILS REPORT FOR THESE AREAS. ALSO NOT INCLUDED ARE QUANTITIES FOR ADDITIONAL DITCHES & BERMS NOT SHOWN THAT MAY BE REQUIRED BY THE ENGINEER.

COMPUTED CUT VOLUME: 0 cys
COMPUTED FILL VOLUME: 0 cys
EXPORT: 0 cys

DRAINAGE CERTIFICATION

I CERTIFY THAT THIS GRADING PLAN IS IN CONFORMANCE WITH THE APPROVED DRAINAGE STUDY ON FILE WITH THE CITY OF LAS VEGAS FOR THIS PROJECT.

Keith J. Hatton 2/1/06
KEITH J. HATTON, PE NO. 15502 DATE

BENCHMARK

BM #	DESC.	HAND 88 DATUM	NAVD 83 DATUM
CLV BM No. 81959 13C4	RIVET AND PLATE IN CONCRETE CYLINDER AT THE NORTHWEST CORNER OF HUALAPAI WAY AND FARM ROAD	2860.79 (FEET)	871.971 (METERS)

BASIS OF BEARINGS

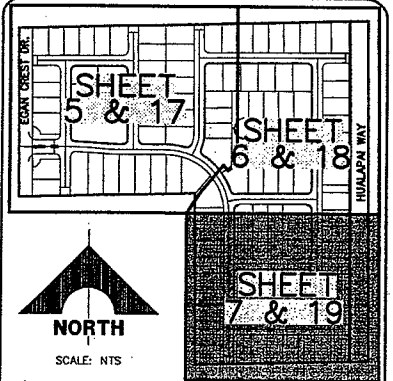
SOUTH 00°19'04" EAST BEING THE BEARING OF THE EAST LINE OF THE SOUTHEAST QUARTER (SE 1/4) OF SECTION 13, TOWNSHIP 19 SOUTH, RANGE 59 EAST, M.D.M., CLARK COUNTY, NEVADA.

LEGAL DESCRIPTION:

LOT 114 OF BLOCK 7 AS SHOWN BY MAP OF "CLIFFS EDGE PARENT" ON FILE IN BOOK 118, PAGE 88 OF PLATS IN THE COUNTY RECORDER'S OFFICE, CLARK COUNTY, NEVADA, LYING WITHIN THE SOUTHEAST QUARTER (SE 1/4) OF SECTION 13, TOWNSHIP 19 SOUTH, RANGE 59 EAST, M.D.M., CLARK COUNTY, NEVADA.

Call before you Dig
1-800-227-2600
UNDERGROUND SERVICE, USA

Avoid hitting overhead power lines. It's costly.
CALL BEFORE YOU DO OVERHEAD
CALL 1-702-227-2829



LOCATION/SHEET INDEX MAP
GRADING AND UTILITY PLANS
CLV DRAWING NO. 7

- NOTE**
- ALL PRIVATE STREETS ARE PRIVATE. PUBLIC SEWER EASEMENTS AND PUBLIC DRAINAGE EASEMENTS TO BE PRIVATELY MAINTAINED BY THE HOMEOWNERS ASSOCIATION.
 - ALL PUBLIC DRAINAGE EASEMENTS TO BE PRIVATELY MAINTAINED BY THE HOMEOWNERS ASSOCIATION.
 - SEE THE UTILITY PLANS (SHEETS 17, 18, & 19) FOR WATER LINE DESIGN AND CONSTRUCTION INFORMATION.
 - FOR CONSTRUCTION NOTES SEE SHEET 2.
 - FOR THE RETAINING WALL TABLE SEE SHEET 10.

DATE: 2/1/06

ISSUE DATE: 02/01/06 ISSUED FOR: TECHNICAL DRAINAGE STUDY SUBMITAL

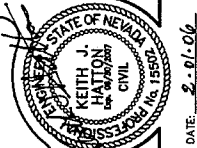
DESIGN: ATN	DATE: 02/01/06
DRAWN: AM/NDY	REV: 01
CHECK: SWM	REV: 02
ISSUE DATE:	REV: 03
ISSUE EDITOR:	REV: 04
PLOT DATE/02-01-06	REV: 05
PLOT TIME: 08:43:10	REV: 06

G.C. WALLACE, INC.
Engineers/Planners/Surveyors
1555 SOUTH RAINBOW BLVD LAS VEGAS, NEVADA 89104
TELEPHONE: (702) 804-2000 FAX: (702) 804-2239
115743194-0001-Phase 1-Plan 114-0002.dwg

MADISON GROVE AT PROVIDENCE - PHASE 3 (POD 14)
A RESIDENTIAL PLANNED DEVELOPMENT
TOLL BROTHERS
GRADING PLAN #

DRAWING 7

7 OF 22 SHEETS



DATE: 2-01-06

DATE: 02/07/08

ISSUED FOR: TECHNICAL DRAINAGE STUDY SUBMITTAL

G.C. WALLACE, INC.
Engineers/Planners/Surveyors
15743 194th Ave. N., Suite 200, Lynnwood, WA 98037
TEL: (206) 864-2200 FAX: (206) 864-2299
www.gcw.com

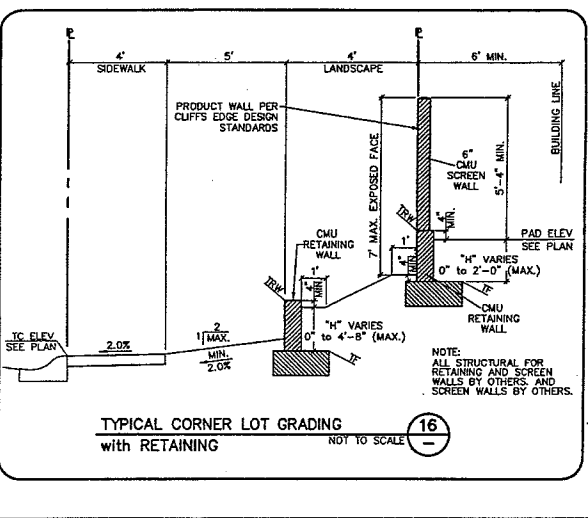
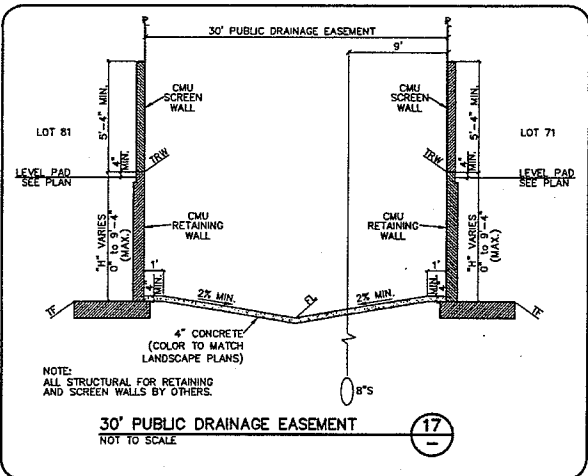
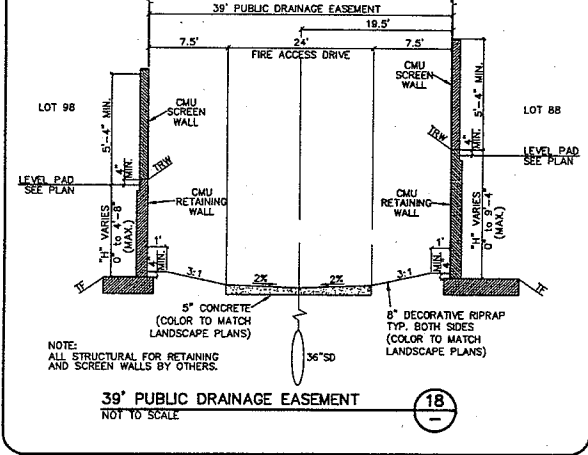
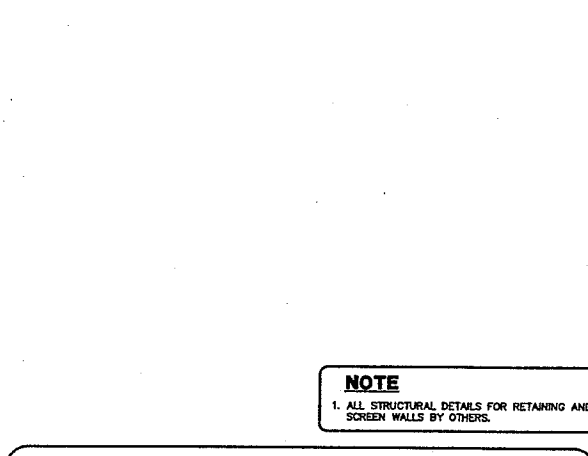
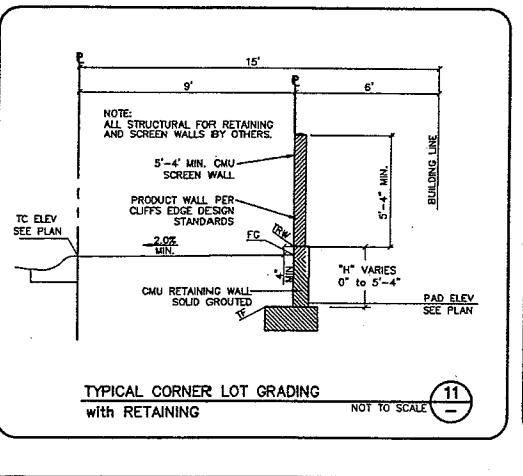
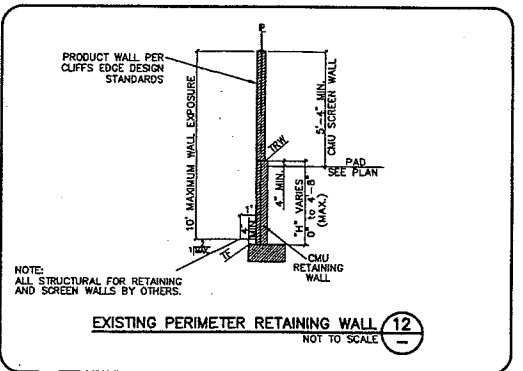
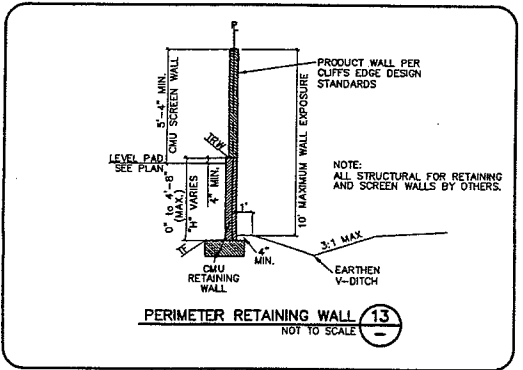
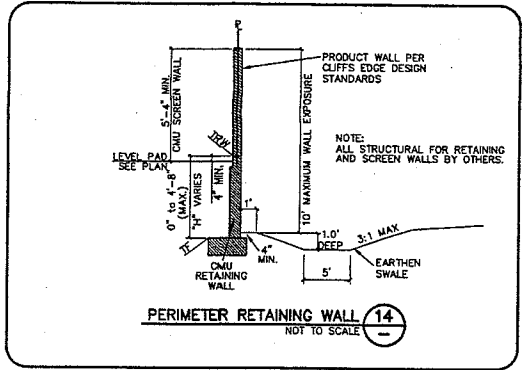
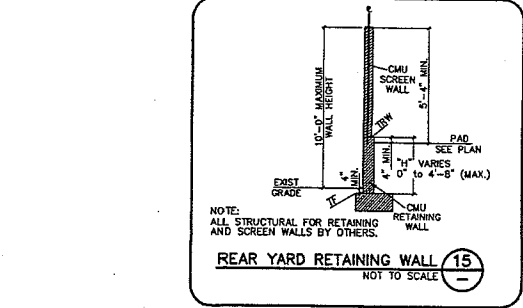
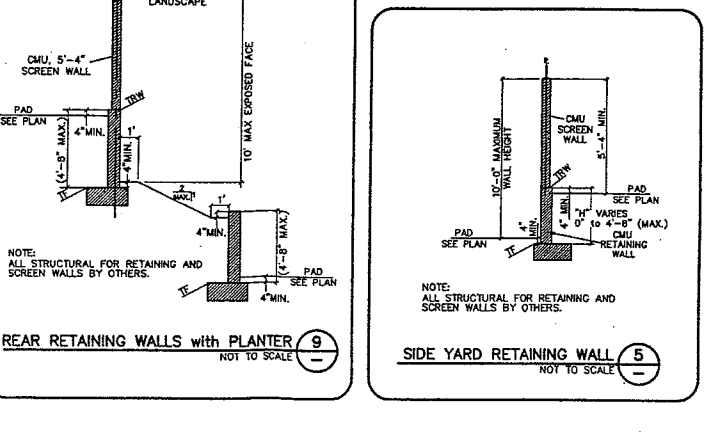
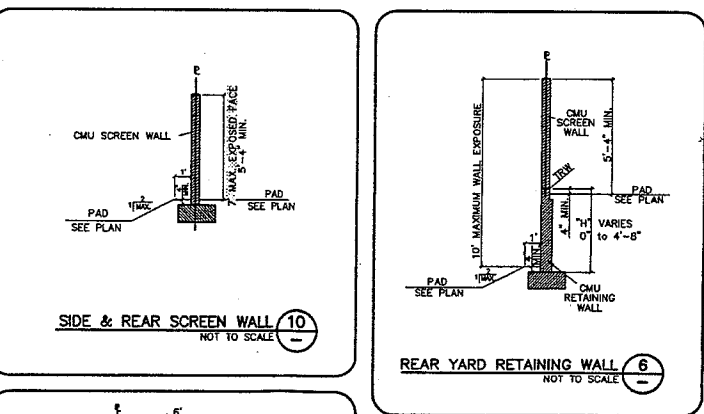
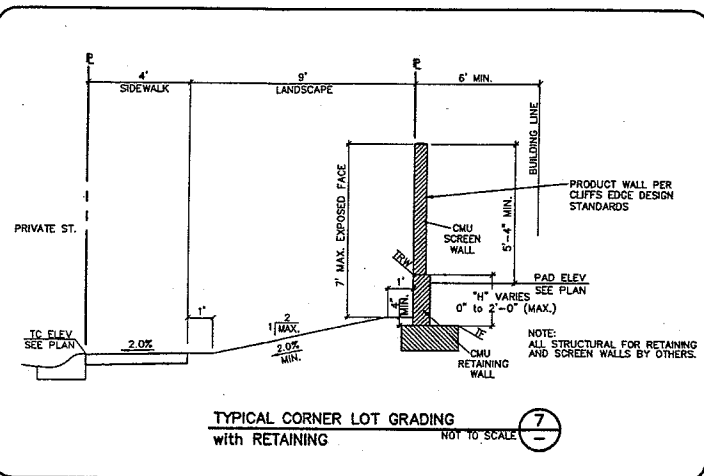
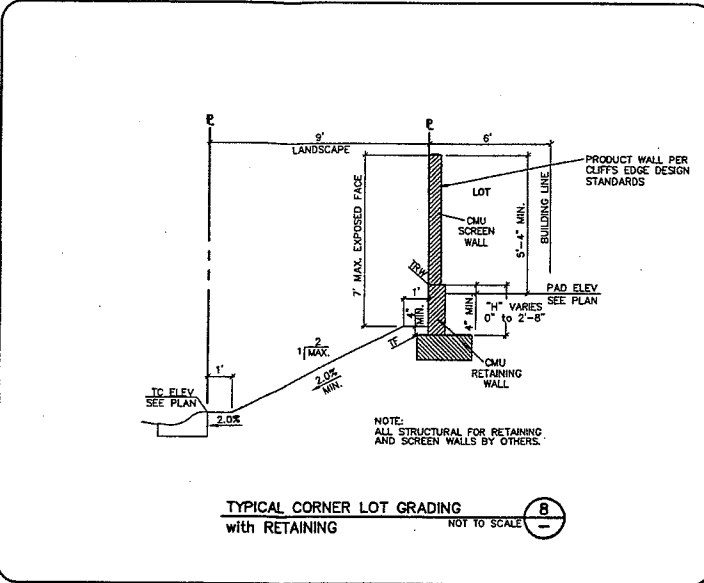
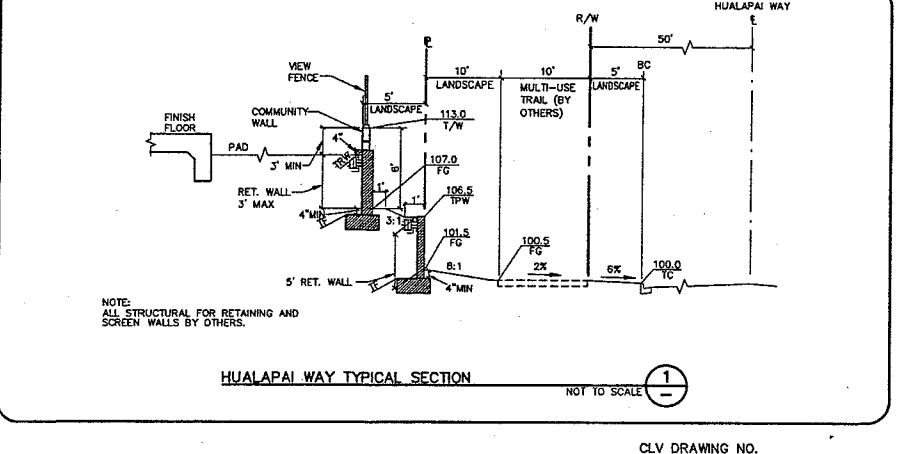
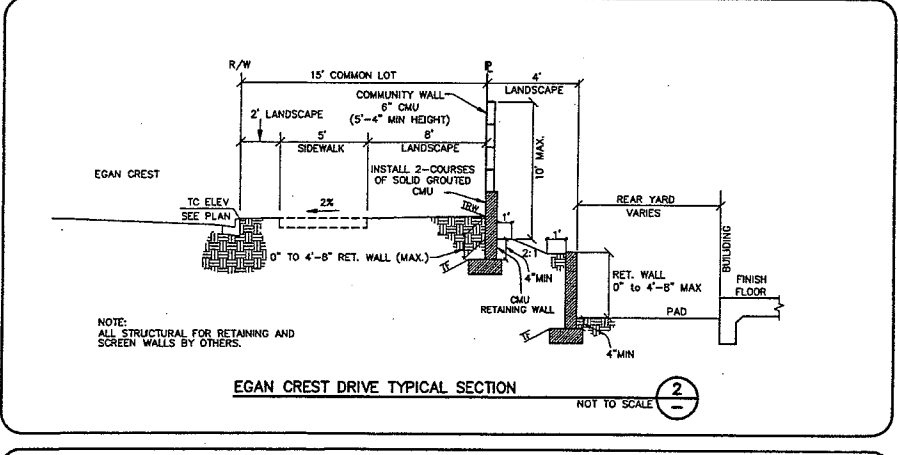
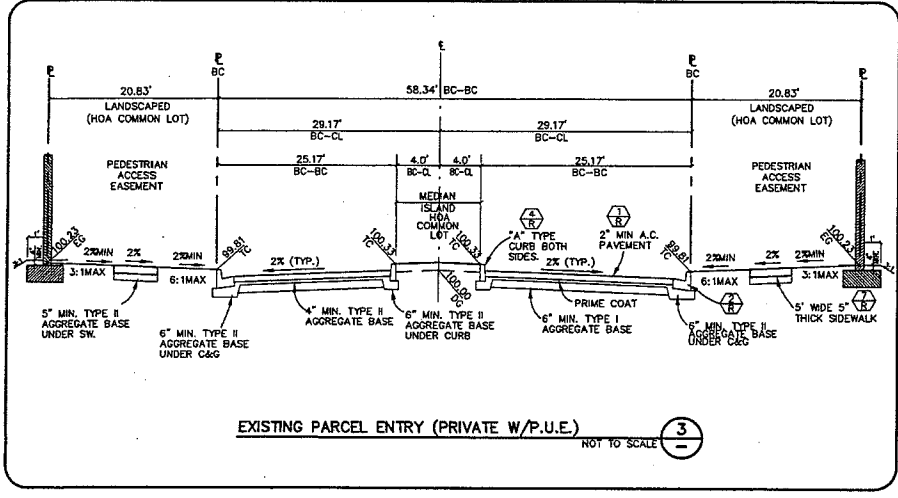
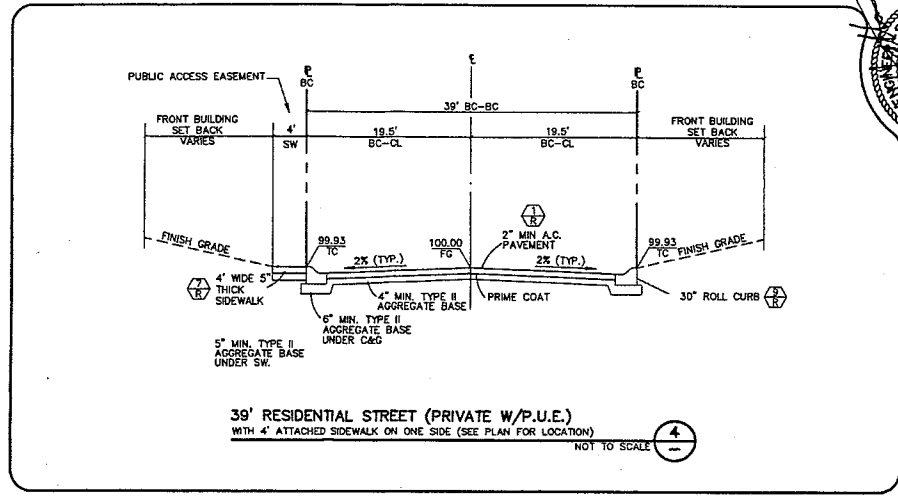
MADISON GROVE AT PROVIDENCE - PHASE 3 (POD 14)
A RESIDENTIAL PLANNED DEVELOPMENT
TOLL BROTHERS

DETAILS 1

DRAWING

8

JOB NO. 743194



NOTE: ALL STRUCTURAL DETAILS FOR RETAINING AND SCREEN WALLS BY OTHERS.

NOTE: ALL STRUCTURAL FOR RETAINING AND SCREEN WALLS BY OTHERS.

NOTE: ALL STRUCTURAL FOR RETAINING AND SCREEN WALLS BY OTHERS.

NOTE: ALL STRUCTURAL FOR RETAINING AND SCREEN WALLS BY OTHERS.

NOTE: ALL STRUCTURAL FOR RETAINING AND SCREEN WALLS BY OTHERS.

NOTE: ALL STRUCTURAL FOR RETAINING AND SCREEN WALLS BY OTHERS.

NOTE: ALL STRUCTURAL FOR RETAINING AND SCREEN WALLS BY OTHERS.

NOTE: ALL STRUCTURAL FOR RETAINING AND SCREEN WALLS BY OTHERS.

NOTE: ALL STRUCTURAL FOR RETAINING AND SCREEN WALLS BY OTHERS.

NOTE: ALL STRUCTURAL FOR RETAINING AND SCREEN WALLS BY OTHERS.

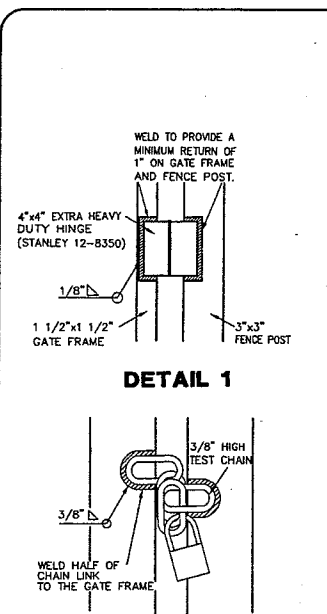
NOTE: ALL STRUCTURAL FOR RETAINING AND SCREEN WALLS BY OTHERS.

NOTE: ALL STRUCTURAL FOR RETAINING AND SCREEN WALLS BY OTHERS.

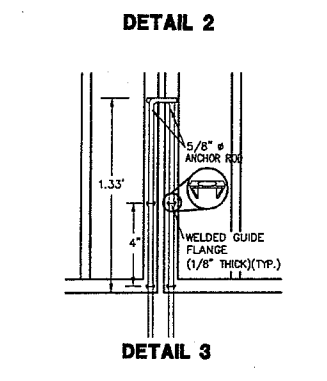
NOTE: ALL STRUCTURAL FOR RETAINING AND SCREEN WALLS BY OTHERS.

NOTE: ALL STRUCTURAL FOR RETAINING AND SCREEN WALLS BY OTHERS.

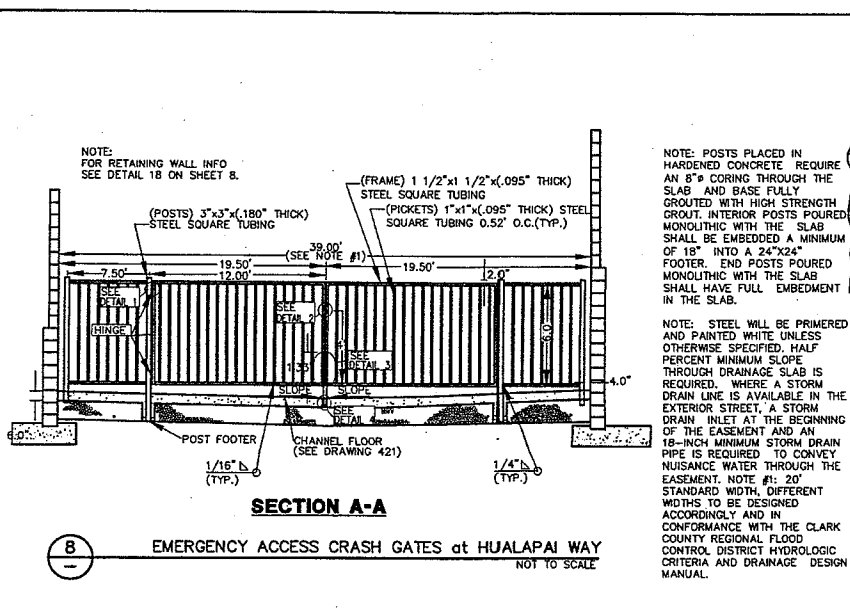
CLV DRAWING NO.



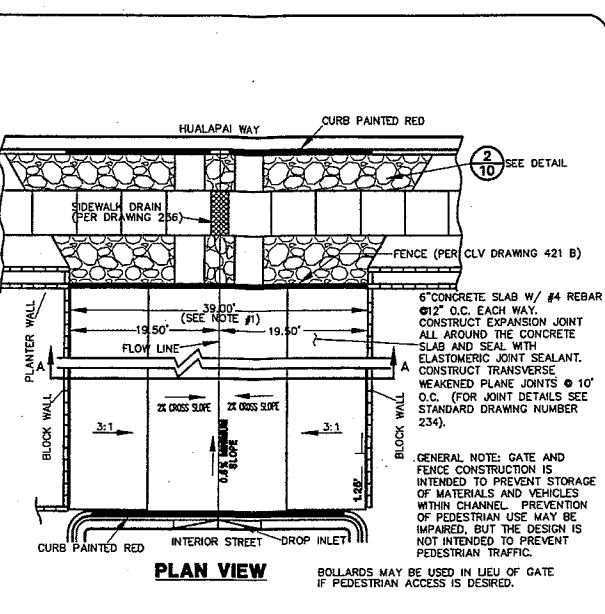
DETAIL 1



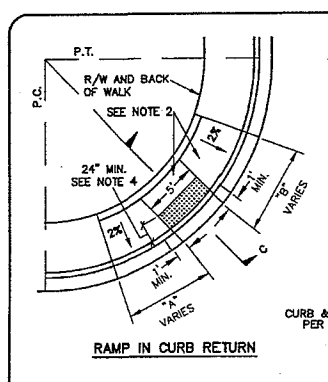
DETAIL 2



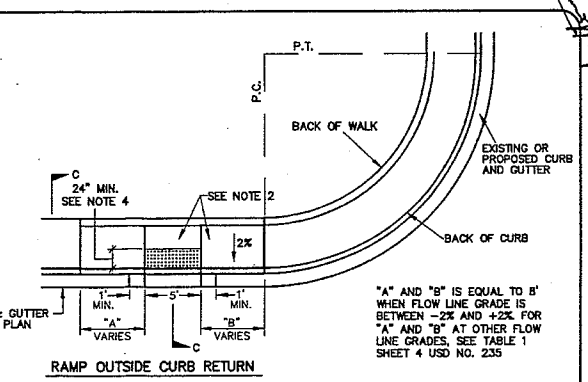
SECTION A-A
 EMERGENCY ACCESS CRASH GATES at HUALAPAI WAY
 NOT TO SCALE



PLAN VIEW

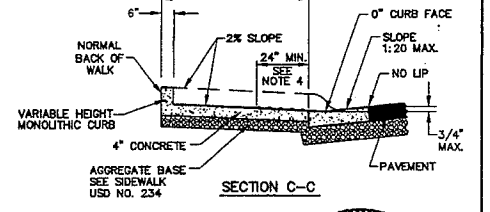


RAMP IN CURB RETURN

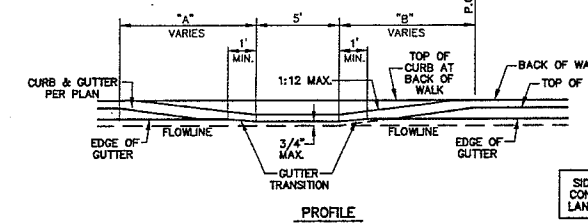


RAMP OUTSIDE CURB RETURN

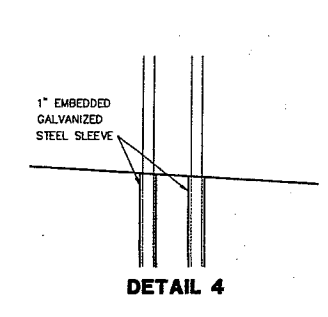
- NOTES:
1. SIDEWALK RAMPS OUTSIDE OF THE CURB RETURN SHALL BE LOCATED ADJACENT TO THE RETURN UNLESS OTHERWISE APPROVED.
 2. RAMPS SHALL BE CONSTRUCTED WITH A ROUGH BROOM FINISH TRANSVERSE TO THE SLOPE OF THE RAMP.
 3. WHEN CONSTRUCTING RAMP WHERE CURB & GUTTER EXISTS, COMPLETELY REMOVE INTERFERING PORTIONS OF EXISTING CURB & GUTTER.
 4. DETECTABLE WARNING CONSISTING OF RAISED TRUNCATED DOMES WHICH COMPLY WITH PERIODIC US 101, AND CONTRASTING VISUALLY WITH ADJACENT SURFACES SHALL BE PLACED ON BOTTOM PORTION OF RAMP EXTENDING THE FULL WIDTH OF THE RAMP AND TO A MINIMUM DEPTH OF 24 INCHES.



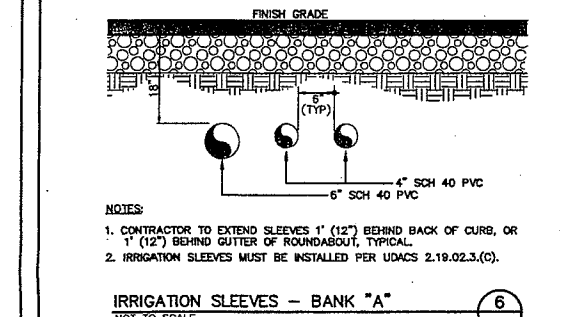
SECTION C-C



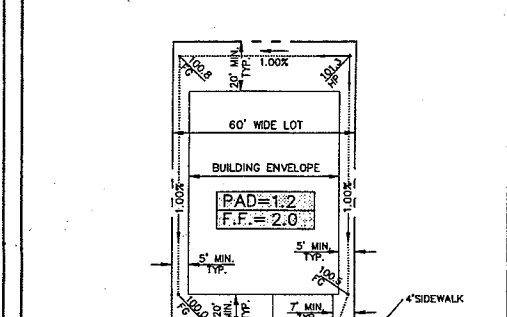
MODIFIED SIDEWALK RAMP DETAIL
 PER USD 235, CASE 1



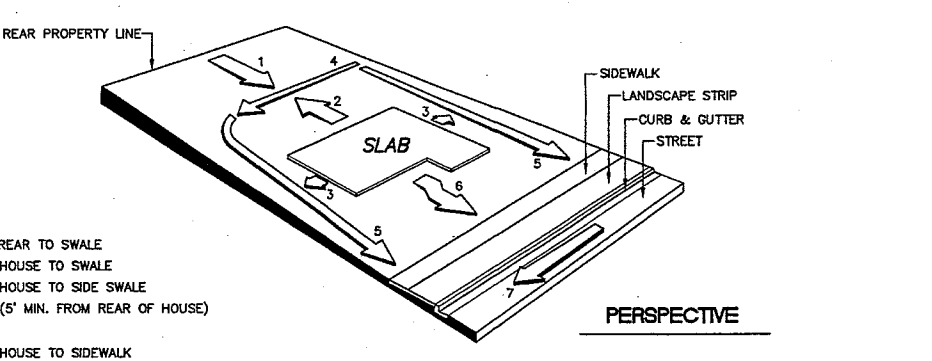
DETAIL 3



IRRIGATION SLEEVES - BANK "A"
 NOT TO SCALE



TYPICAL LOT GRADING
 with SIDEWALK

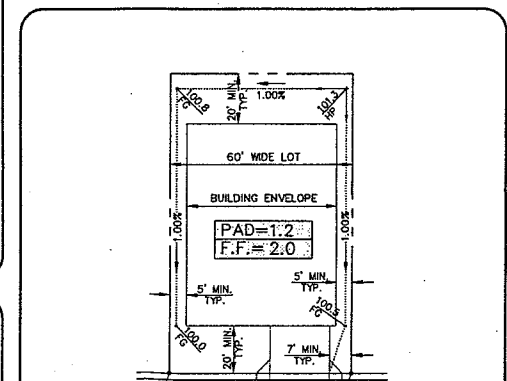


F.H.A. TYPE "A" DRAINAGE

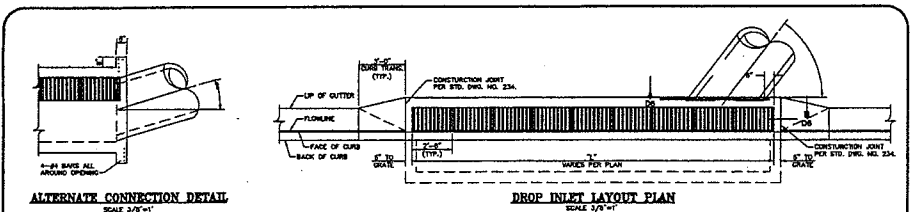
1. SLOPE FROM REAR TO SWALE
2. SLOPE FROM HOUSE TO SWALE
3. SLOPE FROM HOUSE TO SIDE SWALE
4. REAR SWALE (5' MIN. FROM REAR OF HOUSE)
5. SIDE SWALE
6. SLOPE FROM HOUSE TO SIDEWALK
7. SLOPE OF STREET

TYPICAL GRADING

TYPICAL GRADING

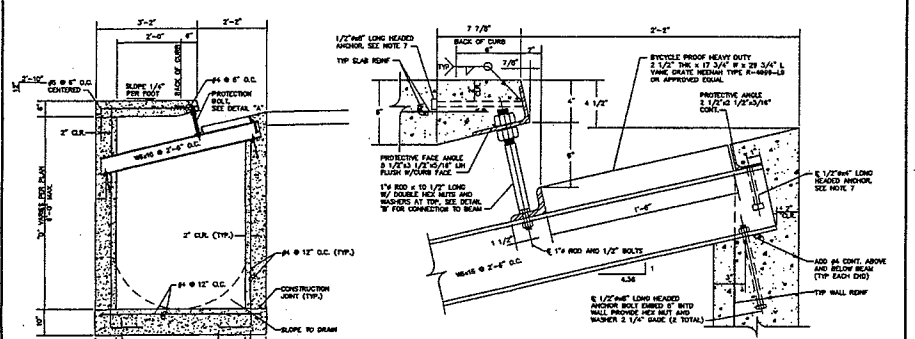


TYPICAL LOT GRADING
 without SIDEWALK



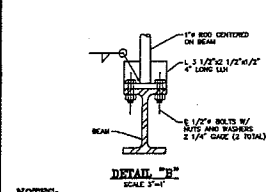
ALTERNATE CONNECTION DETAIL

DROP INLET LAYOUT PLAN

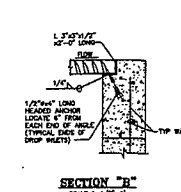


TYPE "CM" DROP INLET SECTION

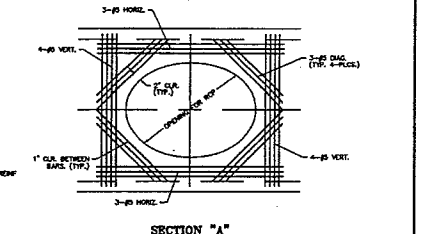
PROTECTIVE FACE & ROD - DETAIL "A"



DETAIL "B"



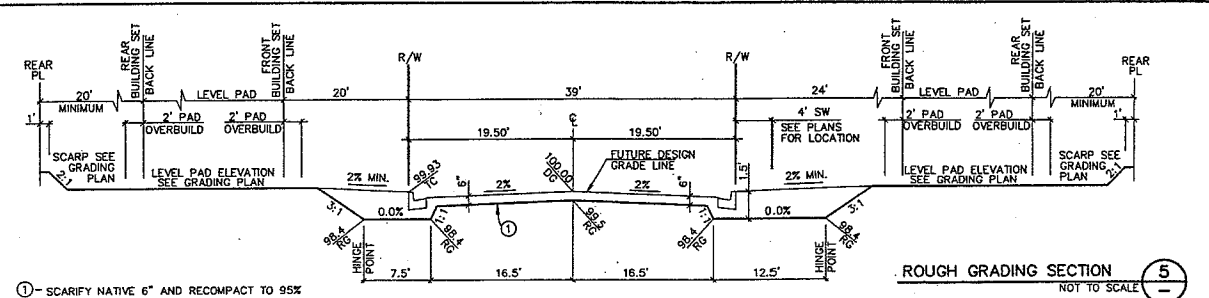
SECTION "B"



SECTION "A"

- NOTES:
1. ALL EXPOSED METALS SHALL BE HOT DIP GALVANIZED AFTER FABRICATION.
 2. PROVIDE 1/2" MIN. CLEARANCE ALL AROUND THE STEEL BEAM.
 3. WELD JOINTS AFTER INSTALLATION.
 4. WELD JOINTS SHALL BE LOCATED AT LEAST 12" FROM END OF BEAM.
 5. ALL GALVANIZING DAMAGED BY WELDING SHALL RECEIVE TWO COATS OF GALVANIZING OR ENAMEL.
 6. CONCRETE SHALL BE MODIFIED CLASS CII. SEE SPECIAL PROVISIONS SECTION 501.
 7. SEE SPECIAL NOTES FOR STRUCTURES ON THIS SHEET.
 8. ALL ANGLE IRONS SHALL BE SLOTTED TO FIT OVER EACH CHANNEL AND CHECK SPACED. (DRAWING NUMBER IS 02)

MODIFIED TYPE "CM" DROP INLET



ROUGH GRADING SECTION

① - SCARIFY NATIVE 6" AND RECOMPACT TO 95%

SIDEWALK RAMP TRANSITION TABLE

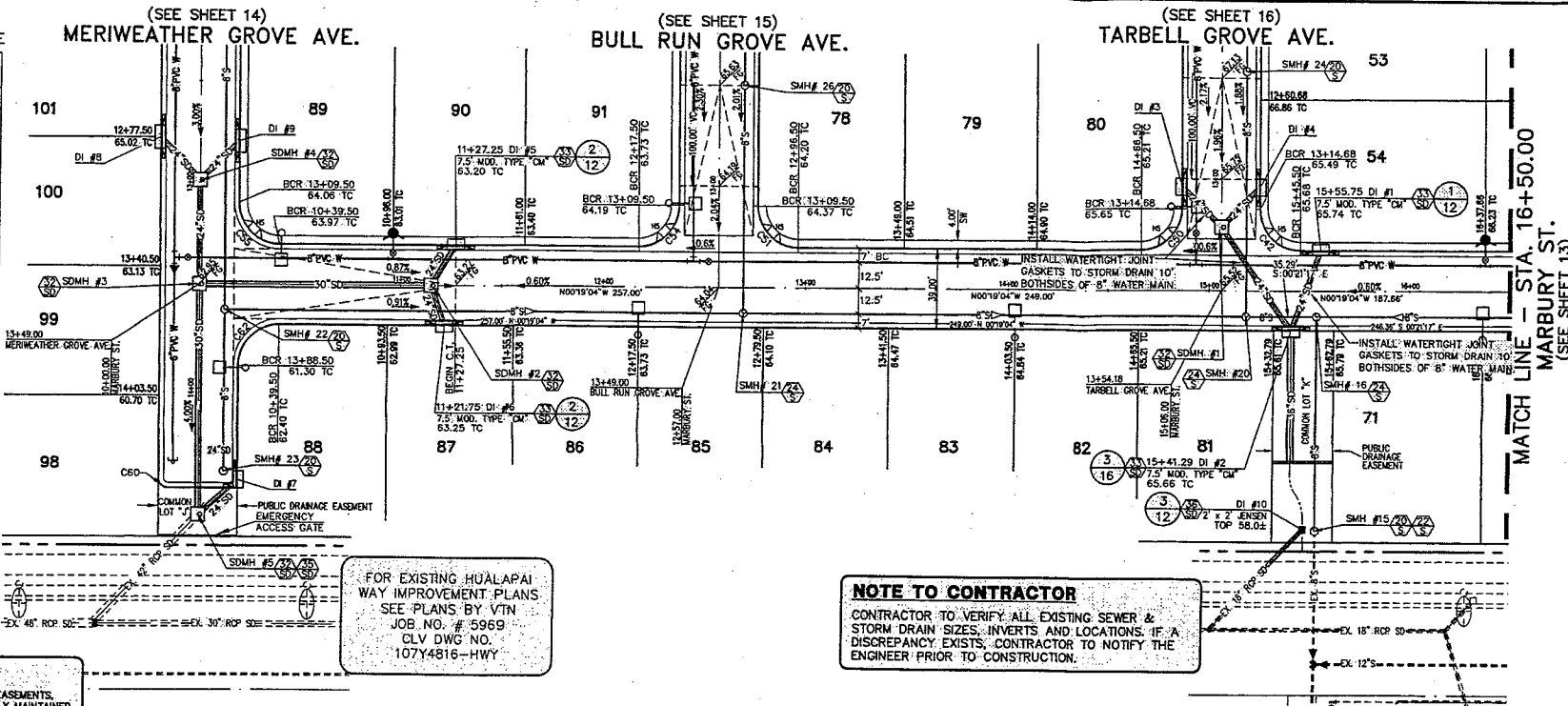
RAMP NO.	GRADE (%)	"A" (FT) MIN.	"B" (FT) MIN.
H1	-6 TO -5.01	4.5	21.5
H2	-5 TO -4.01	4.5	15.0
H3	-4 TO -3.01	4.5	12.0
H4	-3 TO -2.01	4.5	9.5
H5	-2 TO 2	8.0	8.0
H6	2.01 TO 3	9.5	4.5
H7	3.01 TO 4	12.0	4.5
H8	4.01 TO 5	15.0	4.5
H9	5.01 TO 6	21.5	4.5

SEE CLARK COUNTY AREA STANDARD DRAWING #235, CASE 1

CURVE TABLE

CURVE	LENGTH	RADIUS	DELTA
C42	31.42	20.00	90°00'00"
C50	31.42	20.00	90°00'00"
C51	31.42	20.00	90°00'00"
C54	31.42	20.00	90°00'00"
C55	31.42	20.00	90°00'00"
C60	7.85	5.00	90°00'00"
C61	7.85	5.00	90°00'00"
C62	31.42	20.00	90°00'00"

- NOTE**
- ALL PRIVATE STREETS ARE P.U.E., PUBLIC SEWER EASEMENTS, AND PUBLIC DRAINAGE EASEMENTS TO BE PRIVATELY MAINTAINED BY THE HOMEOWNERS ASSOCIATION.
 - ALL PUBLIC DRAINAGE EASEMENTS TO BE PRIVATELY MAINTAINED BY THE HOMEOWNERS ASSOCIATION.
 - SEE THE UTILITY PLANS (SHEETS 15, 16, & 17) FOR WATER LINE DESIGN AND CONSTRUCTION INFORMATION.
 - FOR STREETLIGHTS SEE STREETLIGHT AND TRAFFIC PLANS (SHEETS 18, 19, & 20).
 - FOR CONSTRUCTION NOTES SEE SHEET 2.

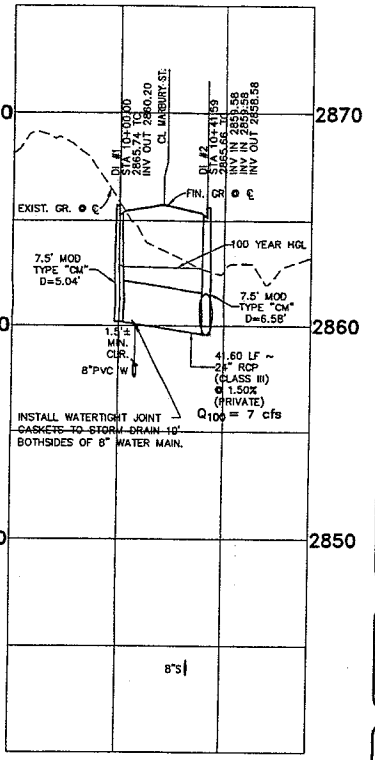


MARBURY ST. (PRIVATE)

SCALE: HORIZ. 1" = 40'
VERT. 1" = 4'

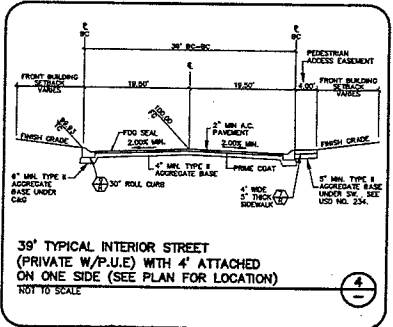
FOR EXISTING HUALAPAI WAY IMPROVEMENT PLANS SEE PLANS BY VTN JOB NO. # 5969 CLV DWG NO. 107Y4816-HWY

NOTE TO CONTRACTOR
CONTRACTOR TO VERIFY ALL EXISTING SEWER & STORM DRAIN SIZES, INVERTS AND LOCATIONS. IF A DISCREPANCY EXISTS, CONTRACTOR TO NOTIFY THE ENGINEER PRIOR TO CONSTRUCTION.



DI #1 & #2 STORM DRAIN LATERAL DETAIL
SCALE: HORIZONTAL 1"=40'
VERTICAL 1"=4'

DI #10 STORM DRAIN LATERAL DETAIL
SCALE: HORIZONTAL 1"=40'
VERTICAL 1"=4'



BENCHMARK

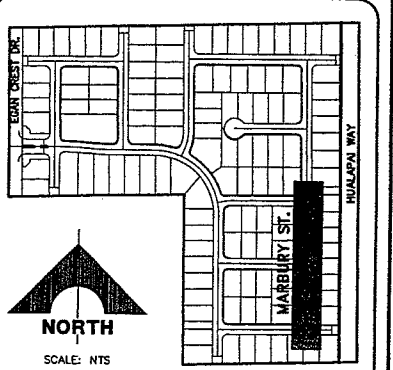
BM #	DESC.	NAVD 88 DATUM	NAVD 83 DATUM
BLV99 13E4	RIVET AND PLATE IN CONCRETE CURB AT THE NORTHWEST CORNER OF HUALAPAI WAY AND FARM ROAD	2860.79 (FEET)	871.971 (METERS)

BASIS OF BEARINGS
SOUTH 00°19'04" EAST BEING THE BEARING OF THE EAST LINE OF THE SOUTHEAST QUARTER (SE 1/4) OF SECTION 13, TOWNSHIP 19 SOUTH, RANGE 59 EAST, M.D.M., CLARK COUNTY, NEVADA.

LEGAL DESCRIPTION:
LOT 114 OF BLOCK 7 AS SHOWN BY MAP OF "CLIFFS EDGE PARENT" ON FILE IN BOOK 118, PAGE 88 OF PLATS IN THE COUNTY RECORDER'S OFFICE, CLARK COUNTY, NEVADA, LYING WITHIN THE SOUTHEAST QUARTER (SE 1/4) OF SECTION 13, TOWNSHIP 19 SOUTH, RANGE 59 EAST, M.D.M., CLARK COUNTY, NEVADA.

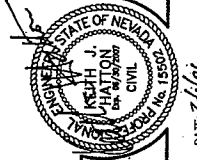
Call before you Dig
1-800-227-2600
UNDERGROUND SERVICE (USA)

Avoid cutting underground utility lines. It's costly.
CALL BEFORE YOU DIG OVERHEAD
CALL 1-702-227-2929



LOCATION/SHEET INDEX MAP
PLAN and PROFILE PLANS

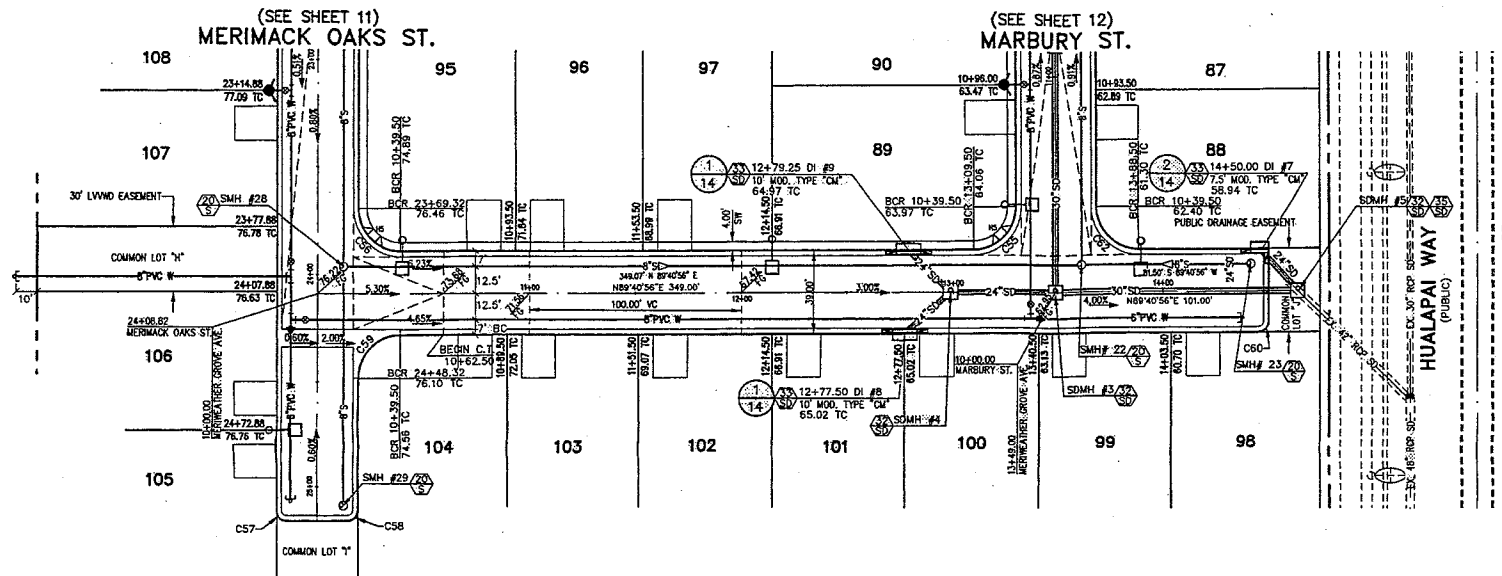
APPROVED FOR CONSTRUCTION
LAS VEGAS VALLEY WATER DISTRICT PROJ # _____ DATE _____
CLV DRAWING NO. _____



G.C. WALLACE, INC.
Engineers/Planners/Surveyors
1143 N. VASA DRIVE, PHASE 3, LAS VEGAS, NEVADA 89146
TELEPHONE: (702) 486-2860 FAX: (702) 486-2829

MADISON GROVE AT PROVIDENCE - PHASE 3 (POD 14)
A RESIDENTIAL PLANNED DEVELOPMENT
TOLL BROTHERS
MARBURY ST.
PLAN and PROFILE 1
DRAWING NO. 749.184
JOB NO. 749.184

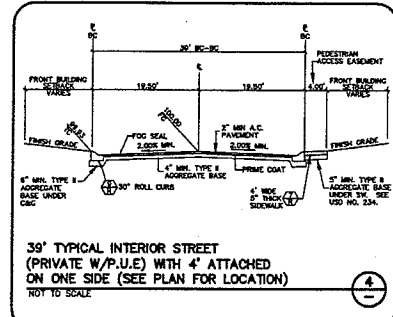
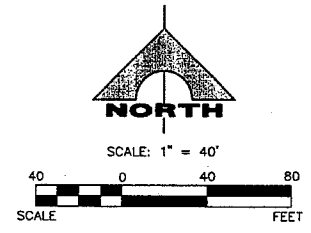
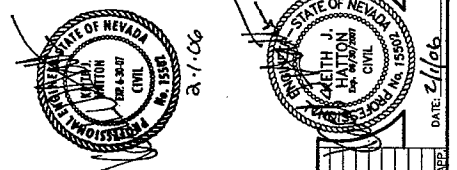
ISSUE DATE: 02/01/08 ISSUED FOR: TECHNICAL DRAINAGE STUDY SUBMITAL



FOR EXISTING HUALAPAI WAY IMPROVEMENT PLANS SEE PLANS BY VTN JOB NO. # 5969 CLV DWG NO. 107Y4816-HWY

NOTE TO CONTRACTOR
CONTRACTOR TO VERIFY ALL EXISTING SEWER & STORM DRAIN SIZES, INVERTS AND LOCATIONS. IF A DISCREPANCY EXISTS, CONTRACTOR TO NOTIFY THE ENGINEER PRIOR TO CONSTRUCTION.

NOTE
1. ALL PRIVATE STREETS ARE P.U.E., PUBLIC SEWER EASEMENTS, AND PUBLIC DRAINAGE EASEMENTS TO BE PRIVATELY MAINTAINED BY THE HOMEOWNERS ASSOCIATION.
2. ALL PUBLIC DRAINAGE EASEMENTS TO BE PRIVATELY MAINTAINED BY THE HOMEOWNERS ASSOCIATION.
3. SEE THE UTILITY PLANS (SHEETS 15, 16, & 17) FOR WATER LINE DESIGN AND CONSTRUCTION INFORMATION.
4. FOR STREETLIGHTS SEE STREETLIGHT AND TRAFFIC PLANS (SHEETS 18, 19, & 20).
5. FOR CONSTRUCTION NOTES SEE SHEET 2.



BENCHMARK

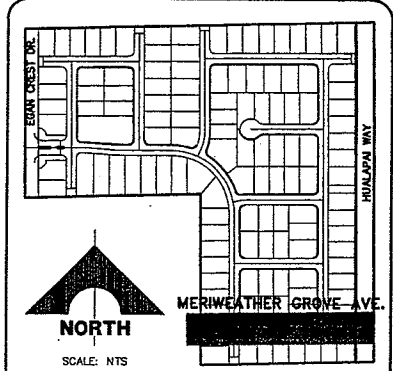
BM #	DESC.	NAVD 88 DATUM	NAVD 88 DATUM
CLV BM NO. 13C4	RIVET AND PLATE IN CONCRETE CYLINDER AT THE NORTHWEST CORNER OF HUALAPAI WAY AND FARM ROAD	2869.79	871.971
		(FEET)	(METERS)

BASIS OF BEARINGS
SOUTH 00°19'04" EAST BEING THE BEARING OF THE EAST LINE OF THE SOUTHEAST QUARTER (SE 1/4) OF SECTION 13, TOWNSHIP 19 SOUTH, RANGE 59 EAST, M.D.M., CLARK COUNTY, NEVADA.

LEGAL DESCRIPTION:
LOT 114 OF BLOCK 7 AS SHOWN BY MAP OF "CLIFFS EDGE PARENT" ON FILE IN BOOK 118, PAGE 88 OF PLATS IN THE COUNTY RECORDER'S OFFICE, CLARK COUNTY, NEVADA, LYING WITHIN THE SOUTHEAST QUARTER (SE 1/4) OF SECTION 13, TOWNSHIP 19 SOUTH, RANGE 59 EAST, M.D.M., CLARK COUNTY, NEVADA.

Call before you Dig
1-800-227-2600
UNDERGROUND SERVICE (USA)

CALL BEFORE YOU DO OVERHEAD
CALL 1-702-227-2929



SIDEWALK RAMP TRANSITION TABLE

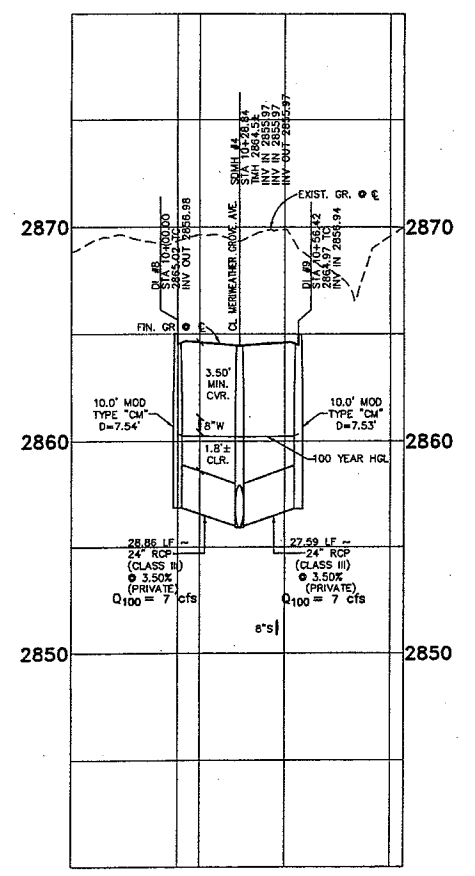
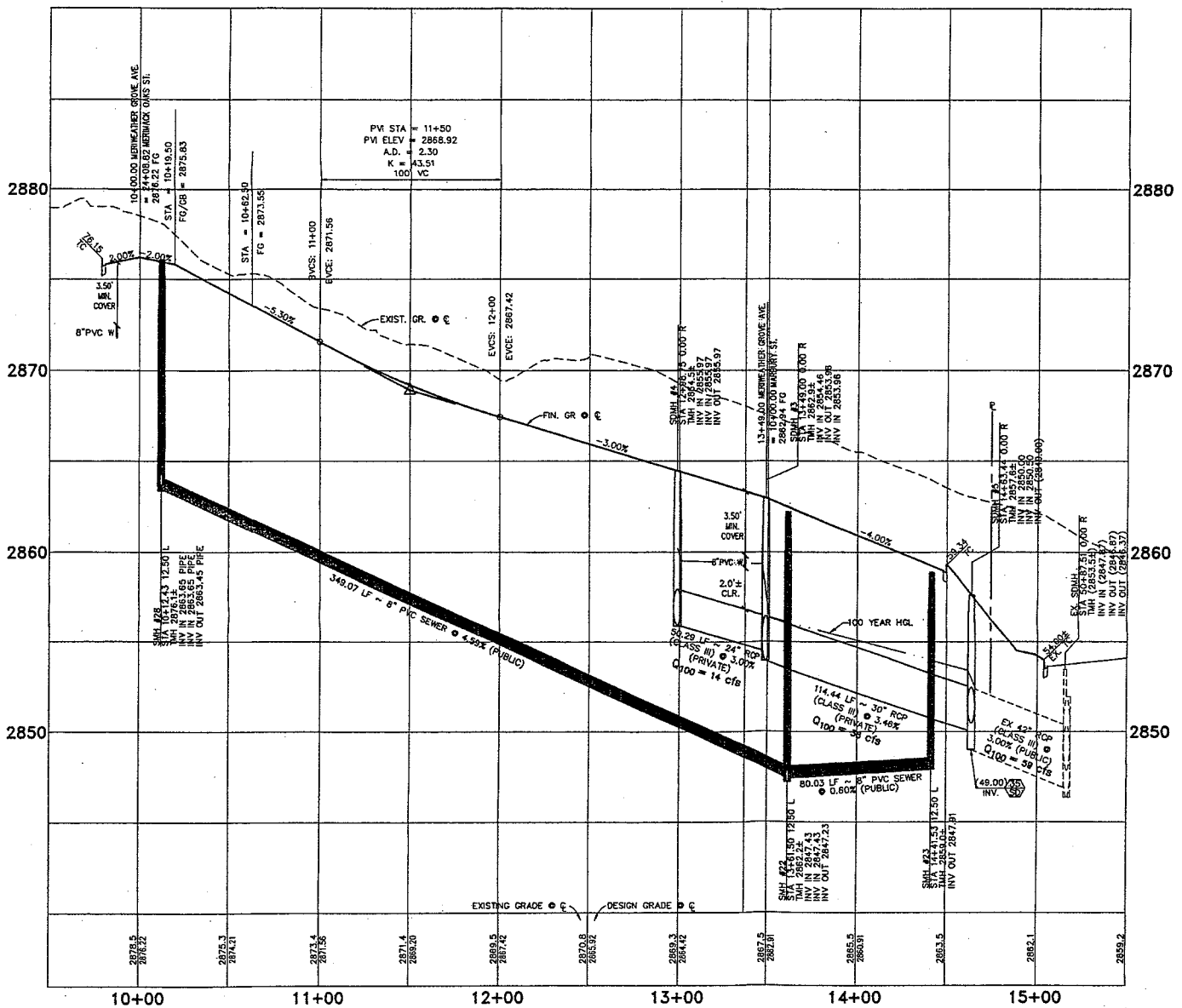
RAMP NO.	GRADE (%) "B" TO "A"	"A" (FT) MIN.	"B" (FT) MIN.
H1	-6 TO -5.01	4.5	21.5
H2	-5 TO -4.01	4.5	15.0
H3	-4 TO -3.01	4.5	12.0
H4	-3 TO -2.01	4.5	9.5
H5	-2 TO 2	8.0	8.0
H6	2.01 TO 3	9.5	4.5
H7	3.01 TO 4	12.0	4.5
H8	4.01 TO 5	15.0	4.5
H9	5.01 TO 6	21.5	4.5

CURVE TABLE

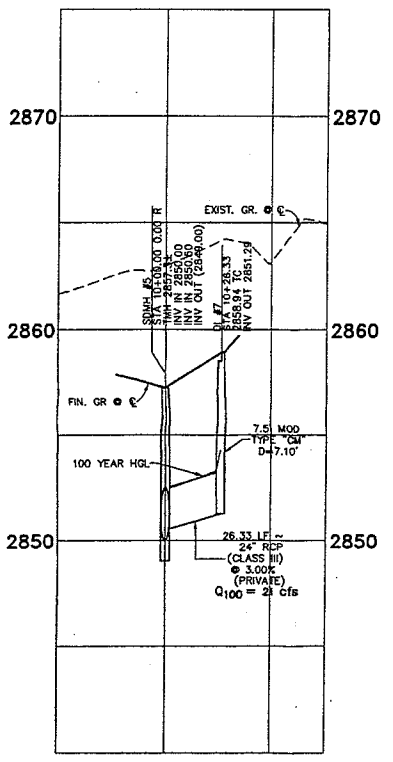
CURVE	LENGTH	RADIUS	DELTA
C55	31.42	20.00	90°00'00"
C56	31.42	20.00	90°00'00"
C57	7.85	5.00	90°00'00"
C58	7.85	5.00	90°00'00"
C59	31.42	20.00	90°00'00"
C60	7.85	5.00	90°00'00"
C61	7.85	5.00	90°00'00"
C62	31.42	20.00	90°00'00"

MERIWEATHER GROVE AVE. (PRIVATE)

SCALE: HORIZ. 1" = 40'
VERT. 1" = 4'



10+28.84 SDMH #4 STORM DRAIN LATERAL DETAIL
SCALE: HORIZONTAL 1"=40'
VERTICAL 1"=4'



10+00.00 SDMH #5 STORM DRAIN LATERAL DETAIL
SCALE: HORIZONTAL 1"=40'
VERTICAL 1"=4'

DATE: 02/01/06 ISSUED FOR TECHNICAL DRAINAGE STUDY SUBMITTAL

DESIGN: DFF
DRAWN: AM/NDY
CHECK: SWM
ISSUE DATE:
ISSUE EDITOR:
PLOT DATE: 02-01-06
PLOT TIME: 08:08:08

G.C. WALLACE, INC.
Engineers/Planners/Surveyors
5001 RAINBOW BLVD., LAS VEGAS, NEVADA 89146
702-735-1100 FAX: 702-735-2259

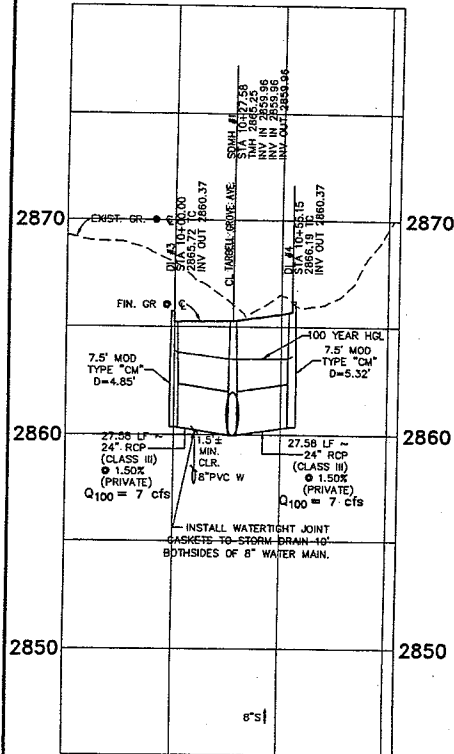
TOLL BROTHERS
MERIWEATHER GROVE AVE
PLAN and PROFILE

DRAWING
14
JOB NO. 743.R4

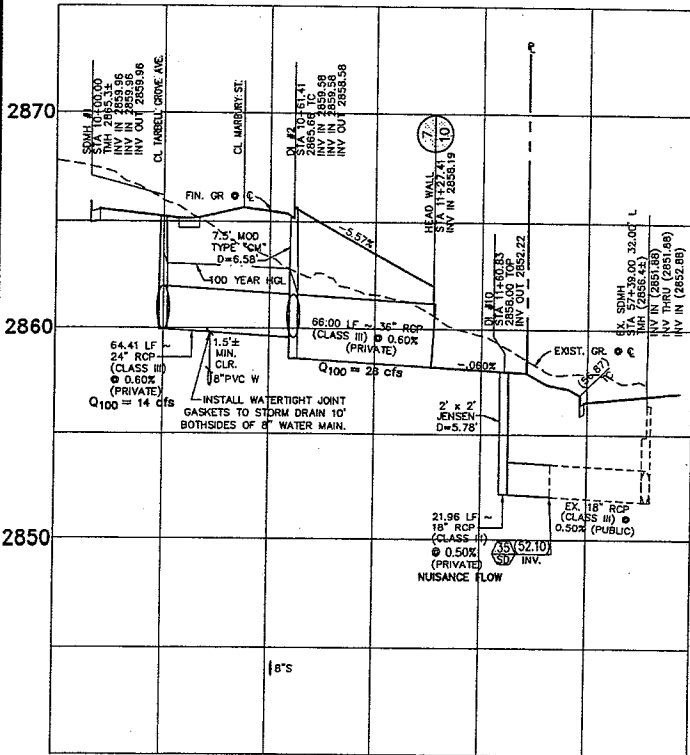
CURVE	LENGTH	RADIUS	DELTA
C42	31.42	20.00	90°00'00"
C43	24.02	169.50	83°17'18"
C44	27.72	20.00	75°25'30"
C45	99.93	269.50	21°14'45"
C46	138.09	230.50	34°19'35"
C47	22.59	230.50	5°36'55"
C48	30.30	70.00	86°48'24"
C49	14.08	130.50	6°10'29"
C50	31.42	20.00	90°00'00"

RAMP NO.	GRADE (%)	"A" (FT) MIN.	"B" (FT) MIN.
H1	-6 TO -5.01	4.5	21.5
H2	-5 TO -4.01	4.5	15.0
H3	-4 TO -3.01	4.5	12.0
H4	-3 TO -2.01	4.5	9.5
H5	-2 TO 2	8.0	8.0
H6	2.01 TO 3	9.5	4.5
H7	3.01 TO 4	12.0	4.5
H8	4.01 TO 5	15.0	4.5
H9	5.01 TO 6	21.5	4.5

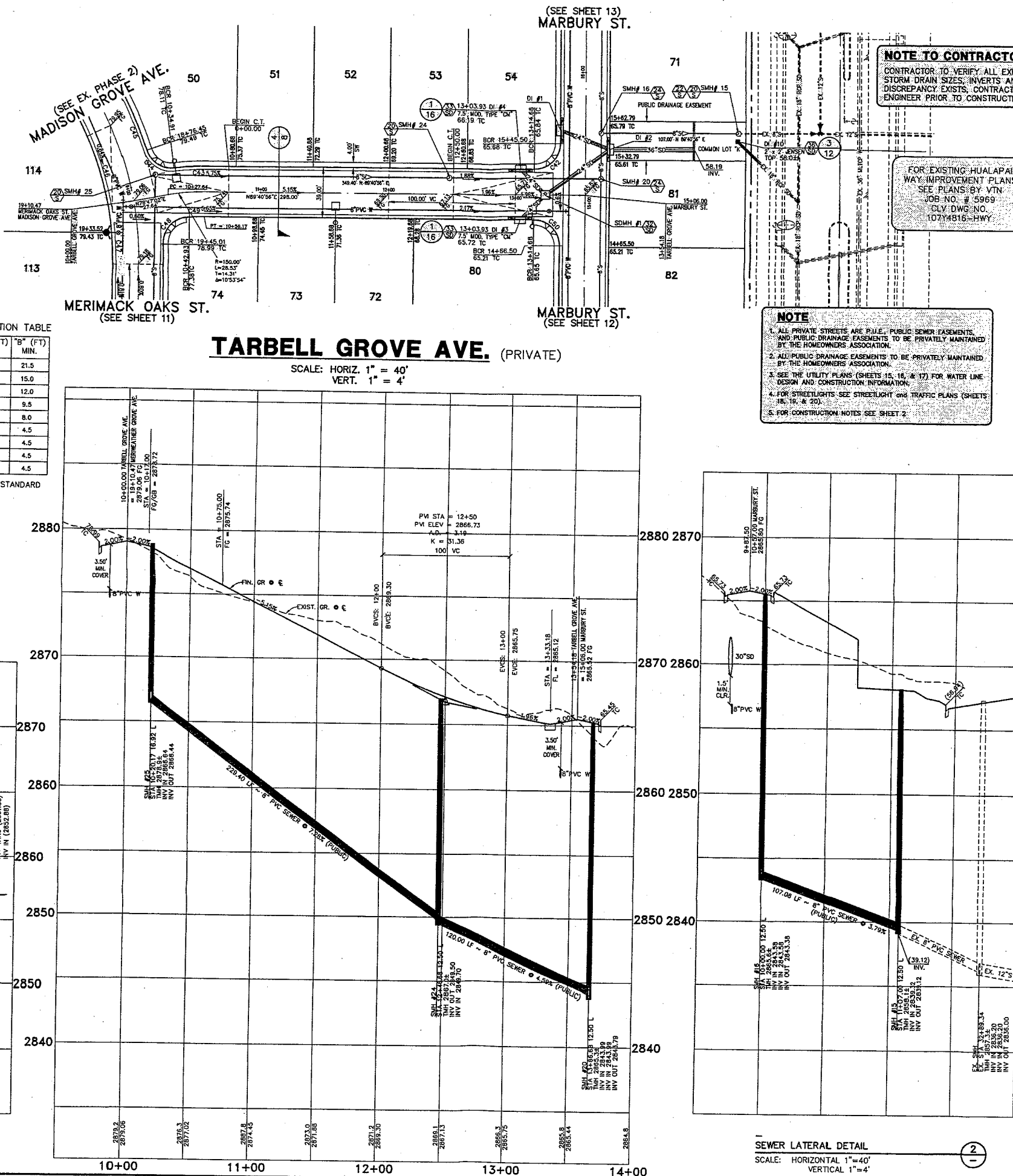
SEE CLARK COUNTY AREA STANDARD DRAWING #235, CASE 1



13+23.43 SDMH #1
STORM DRAIN LATERAL DETAIL
SCALE: HORIZONTAL 1"=40'
VERTICAL 1"=4'



STORM DRAIN LATERAL DETAIL
SCALE: HORIZONTAL 1"=40'
VERTICAL 1"=4'



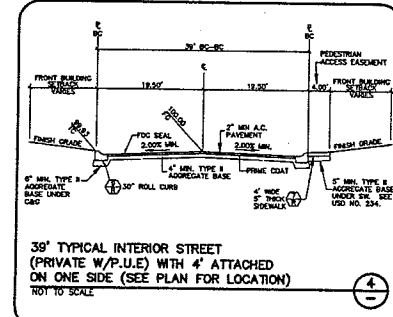
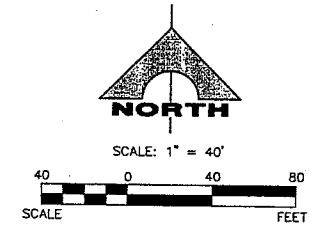
TARBELL GROVE AVE. (PRIVATE)

SCALE: HORIZ. 1" = 40'
VERT. 1" = 4'

- NOTE**
1. ALL PRIVATE STREETS ARE P.U.E., PUBLIC SEWER EASEMENTS, AND PUBLIC DRAINAGE EASEMENTS TO BE PRIVATELY MAINTAINED BY THE HOMEOWNERS ASSOCIATION.
 2. ALL PUBLIC DRAINAGE EASEMENTS TO BE PRIVATELY MAINTAINED BY THE HOMEOWNERS ASSOCIATION.
 3. SEE THE UTILITY PLANS (SHEETS 15, 16, & 17) FOR WATER LINE DESIGN AND CONSTRUCTION INFORMATION.
 4. FOR STREETLIGHTS SEE STREETLIGHT AND TRAFFIC PLANS (SHEETS 18, 19, & 20).
 5. FOR CONSTRUCTION NOTES SEE SHEET 2.

NOTE TO CONTRACTOR
CONTRACTOR TO VERIFY ALL EXISTING SEWER & STORM DRAIN SIZES, INVERTS AND LOCATIONS. IF A DISCREPANCY EXISTS, CONTRACTOR TO NOTIFY THE ENGINEER PRIOR TO CONSTRUCTION.

FOR EXISTING HUALAPAI WAY IMPROVEMENT PLANS SEE PLANS BY VTN JOB NO. # 5969 CLV DWG NO. 1074815-HWY



BENCHMARK

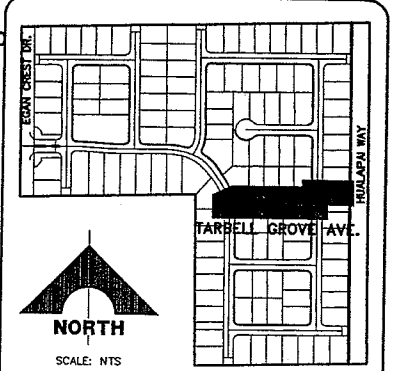
BM #	DESC.	NAVD 88 DATUM	NAVD 88 DATUM
CLV BM No. 81959	RIVET AND PLATE IN CONCRETE CINDER AT THE NORTHWEST CORNER OF HUALAPAI WAY AND FARM ROAD	2860.79 (FEET)	871.971 (METERS)

BASIS OF BEARINGS
SOUTH 00°19'04" EAST BEING THE BEARING OF THE EAST LINE OF THE SOUTHEAST QUARTER (SE 1/4) OF SECTION 13, TOWNSHIP 19 SOUTH, RANGE 59 EAST, M.D.M., CLARK COUNTY, NEVADA.

LEGAL DESCRIPTION:
LOT 114 OF BLOCK 7 AS SHOWN BY MAP OF "CLIFFS EDGE PARENT" ON FILE IN BOOK 118, PAGE 88 OF PLATS IN THE COUNTY RECORDER'S OFFICE, CLARK COUNTY, NEVADA, LYING WITHIN THE SOUTHEAST QUARTER (SE 1/4) OF SECTION 13, TOWNSHIP 19 SOUTH, RANGE 59 EAST, M.D.M., CLARK COUNTY, NEVADA.

Call before you Dig
1-800-227-2600
UNDERGROUND SERVICE, (USA)

CALL BEFORE YOU DIG OVERHEAD
CALL 1-702-227-2929



LOCATION/SHEET INDEX MAP
PLAN and PROFILE
CLV DRAWING NO.

STATE OF NEVADA
CLARK COUNTY
ENGINEER
J. WALLACE
No. 15550
DATE: 2/1/06

DESIGN: DPT
DRAWN: AM/ADY
CHECK: SYM
ISSUE DATE:
ISSUE EDITOR:
PLOT DATE: 02-01-06
PLOT TIME: 08:43:38

G.C. WALLACE, INC.
Engineers/Planners/Surveyors
1610/JAS VEGAS, NEVADA 89146
TELEPHONE: (702) 666-2800 FAX: (702) 666-2289
E: GCS@GWallace.com

MADISON GROVE AT PROVIDENCE - PHASE 3 (POD 14)
A RESIDENTIAL PLANNED DEVELOPMENT
TOLL BROTHERS
TARBELL GROVE AVE.
PLAN and PROFILE

DRAWING
16
JOB NO. 743184

ISSUE DATE: 02/01/06 ISSUED FOR: TECHNICAL DRAINAGE STUDY SUBMITAL

DATE: 2/1/06

16 OF 22 SHEETS