

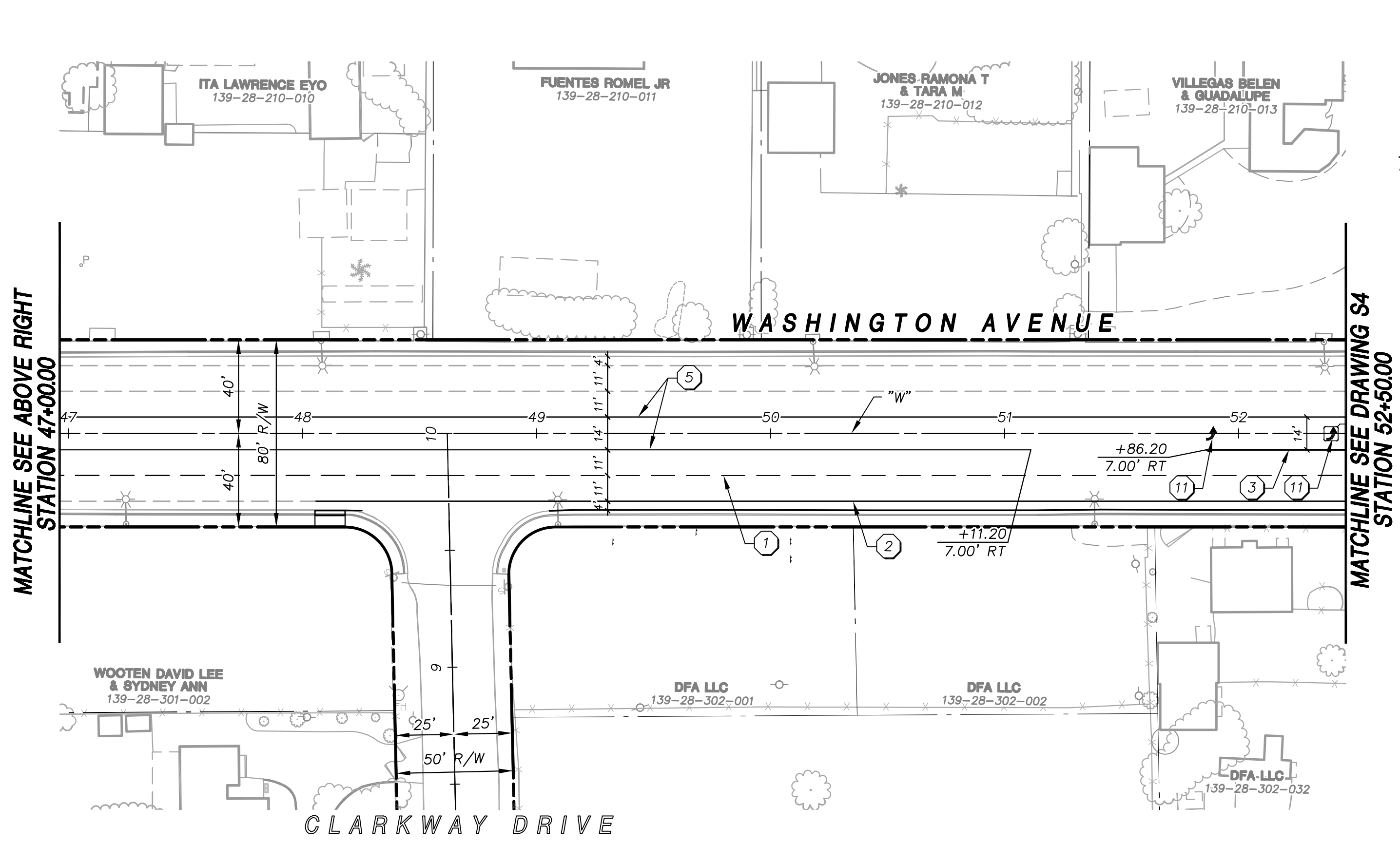
- TRAFFIC NOTES**
- 1 INSTALL TYPE 4 LANE LINE (RPM) PER USD #244.1
 - 2 INSTALL 6" SOLID WHITE LINE (POLYUREA)
 - 3 INSTALL STORAGE LANE LINE PER USD #246 (RPM)
 - 4 INSTALL TYPE I CENTERLINE (RPM) PER USD #244
 - 5 INSTALL TYPE II CENTERLINE (RPM) PER USD #244
 - 6 INSTALL BIKE LANE SYMBOL WITH ARROW (TYPE II PMF) PER USD #244.9
 - 7 INSTALL MEDIAN NOSE MARKINGS PER USD #248
 - 8 INSTALL 24" STOP LINE PER USD #254
 - 9 INSTALL CROSSWALK MARKINGS PER USD #254
 - 10 INSTALL TYPE II CROSSWALK MARKING PER USD #254.1.S1
 - 11 INSTALL WHITE TURN ARROW (TYPE II PMF)
 - 12 INSTALL PAVEMENT MARKINGS FOR SPEED HUMP PER DETAIL 1/56
 - 13 INSTALL TRANSITION PER USD #245 (2 OF 3) (RPM) (YELLOW)
 - 14 REMOVE K71 FLEXIBLE MARKER POST
 - 15 INSTALL K71 FLEXIBLE MARKER POST
 - 16 REMOVE AND REPLACE EXISTING SIGN(S)
 - 17 EXISTING SIGN(S) TO BE REMAIN
 - 18 INSTALL WHITE "ONLY" (TYPE II PMF)

**DEPARTMENT OF PUBLIC WORKS
ENGINEERING DESIGN SECTION**

CITY ENGINEER: DAVID BOWERS, P.E., P.T.O.E.
CITY PROGRAM MANAGER: MARK SORENSEN, P.E.

PROJECT MANAGER: MATT BAIRD, P.E.
DESIGN BY: SMB
DRAWN BY: TKS

CHECK BY: SCR
DATE: JUNE 2013



APPROVED FOR CONSTRUCTION

Las Vegas Valley Water District Engineering Services Manager
Date _____ Project No. XXXXXX ESN 018

Call before you Dig
AVOID HITTING OVERHEAD
UTILITY LINES. IT'S COSTLY.

Call
811

1-800-227-2600

FAST

Call
before you
UnderGround

1-702-432-5300

PREVENT AND AVOID
SYSTEM OF TRANSPORTATION

AVOID HITTING OVERHEAD
POWER LINES. IT'S COSTLY.

**CALL BEFORE
YOU DO
OVERHEAD**

1-702-227-2929

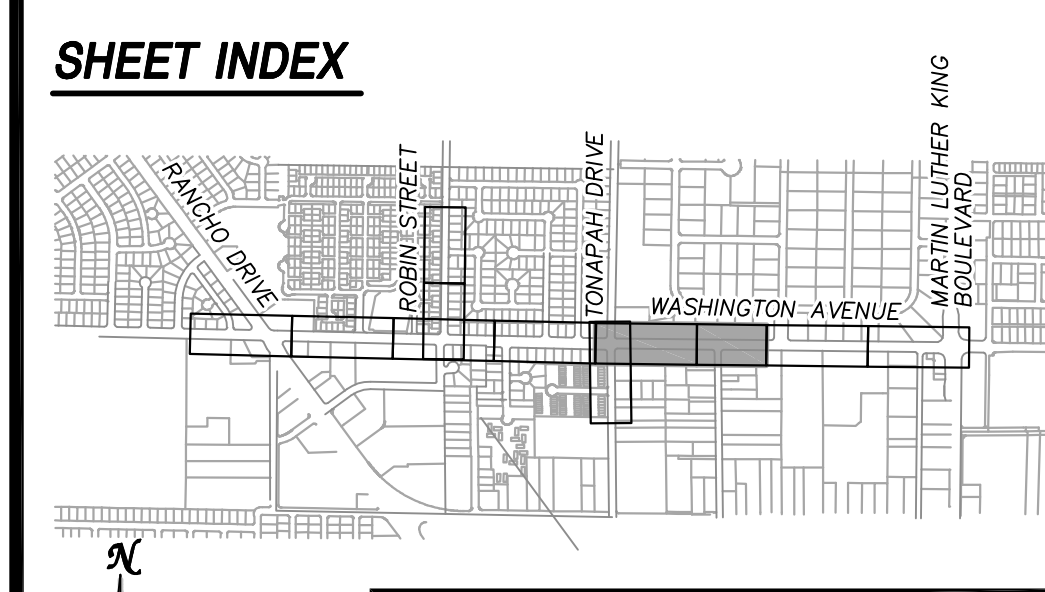
GRAPHIC SCALE

(IN FEET)
HORIZ 1 inch = 40ft.
VERTICAL 1 inch = 4 ft.

CAUTION:
EXISTING UTILITIES ARE LOCATED ON THE PLANS FROM A SEARCH OF AVAILABLE RECORDS. CONTRACTOR TO VERIFY LOCATIONS AND DEPTHS PRIOR TO CONSTRUCTION.

TITLE: FREEWAY CHANNEL - WASHINGTON
MLK BOULEVARD TO RANCHO DRIVE
(WASHINGTON AVE. STORM DRAIN)

SHEET: STRIPING AND MARKING PLAN
WASHINGTON AVENUE
STA 39+00.00 TO STA 52+50.00



PROFESSIONAL ENGINEER-STATE OF NEVADA

MATHEW S. BAIRD
EXP. 12-31-14
CIVIL
No. 13684

ATKINS

2270 Corporate Circle Suite
200 Henderson, Nevada
89074 Telephone:
702/263-7275
Fax: 702/263-7200

S3
#7 of 63
DRAWING# 731-90

X:\Projects\100022151_WashAve\Sheets\22151-5-S3 #6-05-13 02:32pm

NOT FOR CONSTRUCTION 70% SUBMITTAL