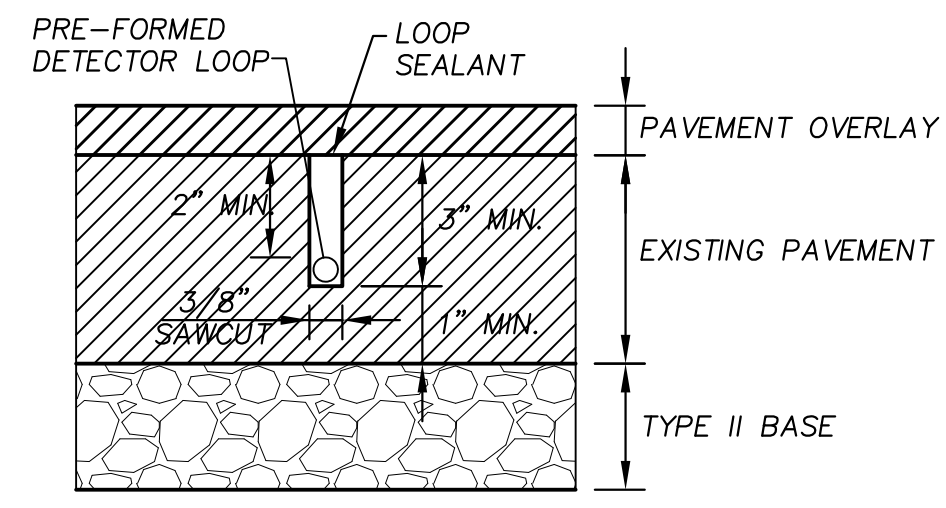


**NOTE:**  
1. FOR ADDITIONAL INFORMATION & DETAILS NOT SHOWN REFER TO USD #236

**DI-II**

**SIDEWALK DRAIN**  
SCALE: N.T.S.

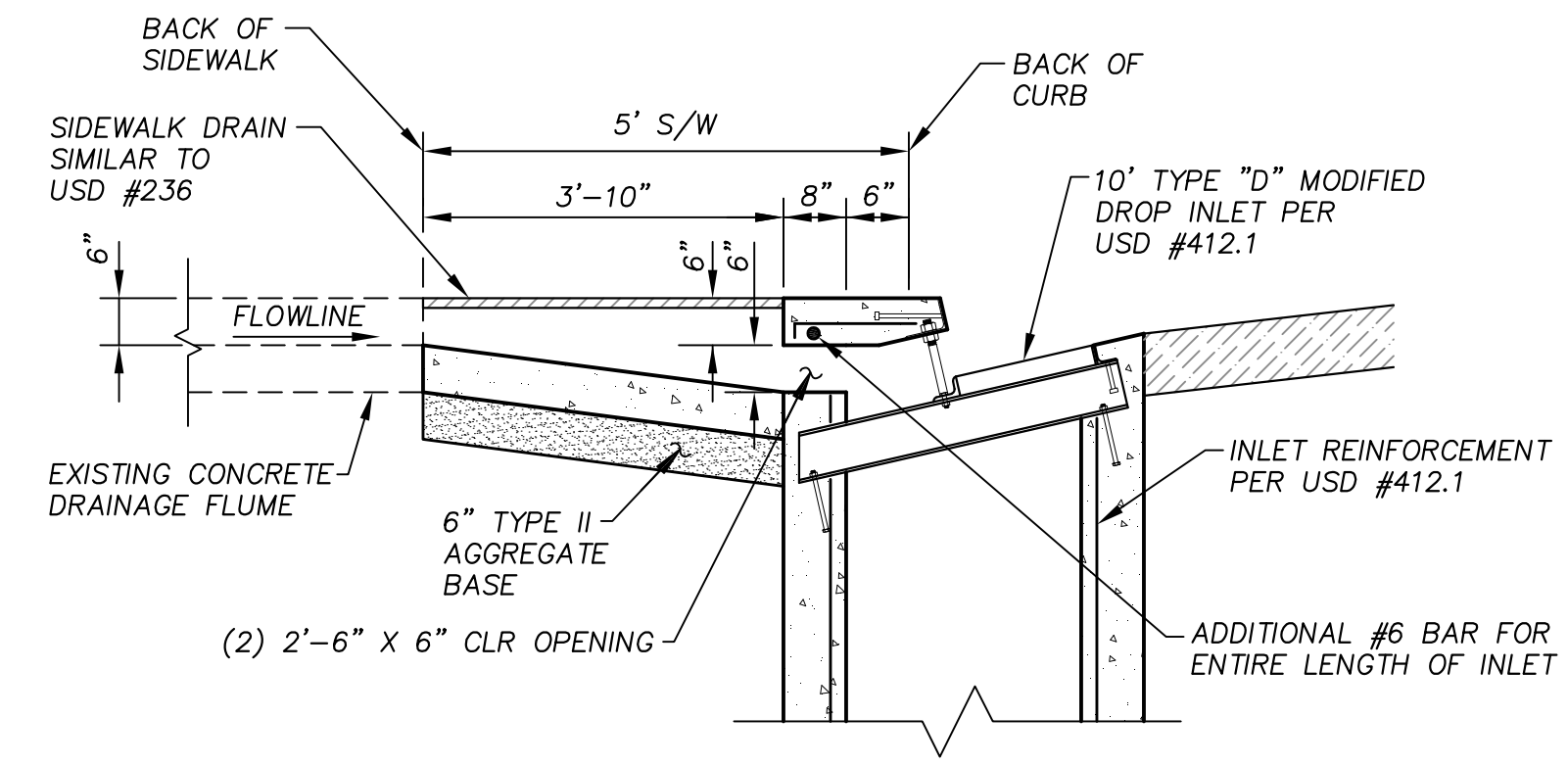


**PRE-FORMED DETECTOR LOOP INSTALLATION  
PAVEMENT REHABILITATION**

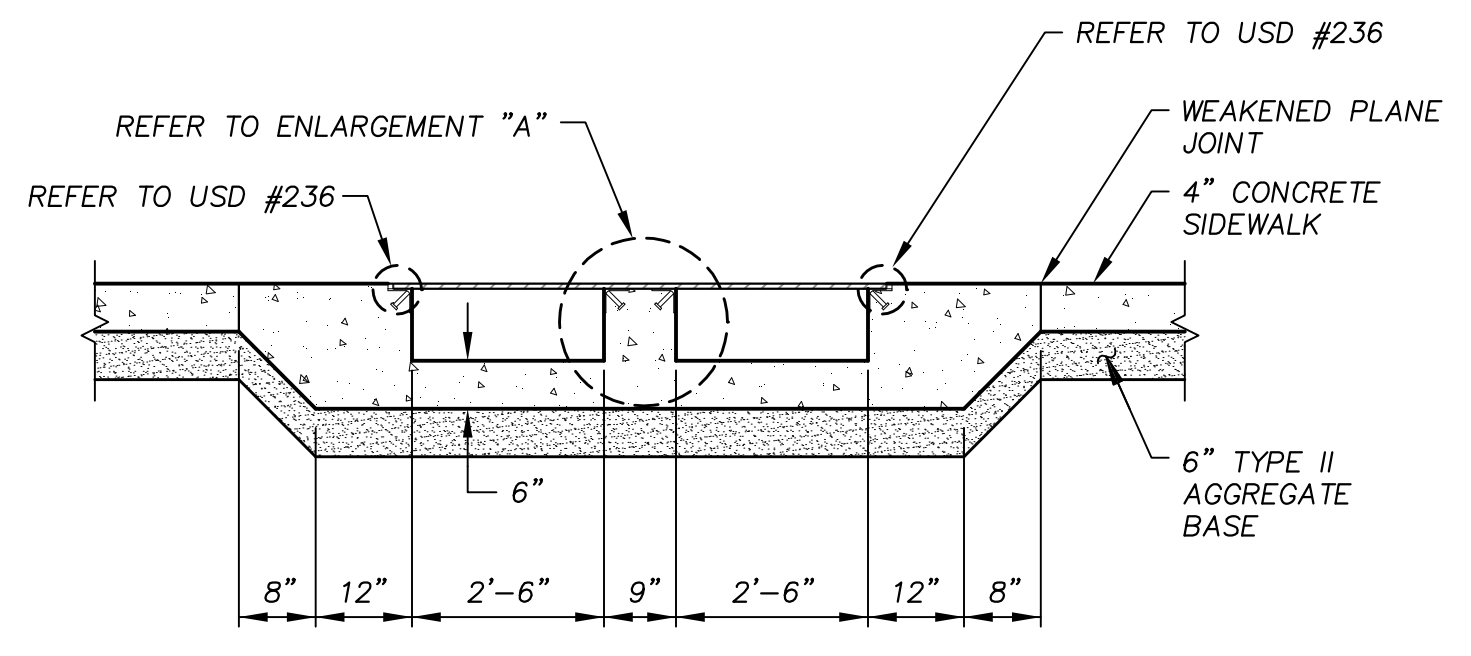
**CONSTRUCTION NOTES:**

1. DETECTOR LOOPS SHALL BE PRE-FORMED PER SPECIAL PROVISION 623.02.04.
2. LOOP LEAD-IN CABLE SHALL BE PER SPECIAL PROVISION 623.02.04.
3. FOR FULL-DEPTH PAVEMENT CONSTRUCTION, EMBED OR PLACE PRE-FORMED LOOP DETECTORS OR TOP OF AGGREGATE BASE MATERIAL PER MANUFACTURER'S RECOMMENDATIONS OR AS APPROVED BY THE ENGINEER. THE CONTRACTOR SHALL ENSURE THAT THE LOOP DETECTORS ARE PROPERLY SECURED IN PLACE TO PREVENT MOVEMENT PRIOR TO AND DURING THE INSTALLATION OF PAVING MATERIAL.
4. LOOP DETECTORS SHALL BE CENTERED IN TRAVEL LANES.
5. ALL LOOP DETECTOR LOCATIONS SHALL BE APPROVED BY THE CLV TRAFFIC ENGINEER PRIOR TO INSTALLATION.

**PRE-FORMED LOOP DETECTOR**  
SCALE: N.T.S.

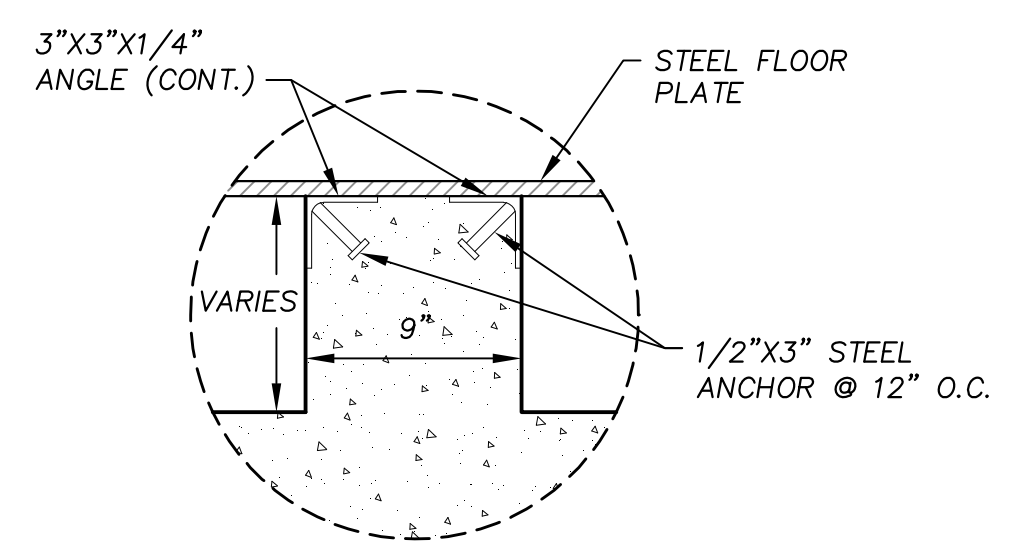


**SECTION A**  
SCALE: N.T.S.



**NOTE:**  
1. FOR ADDITIONAL INFORMATION & DETAILS NOT SHOWN REFER TO USD #236

**SECTION B**  
SCALE: N.T.S.



**ENLARGEMENT**

**DEPARTMENT OF PUBLIC WORKS  
ENGINEERING DESIGN SECTION**

DAVID BOWERS, P.E., P.T.O.E.  
MARK SORENSEN, P.E.  
CITY ENGINEER  
CITY PROGRAM MANAGER

MATT BAIRD, P.E.  
SMB  
PROJECT MANAGER

CHECK BY: SCR  
DATE: JUNE 2013  
DRAWN BY: DUE

**TITLE: FREEWAY CHANNEL - WASHINGTON  
MLK BOULEVARD TO RANCHO DRIVE  
(WASHINGTON AVE. STORM DRAIN)**

**DETAILS**

**PROFESSIONAL ENGINEER-STATE OF NEVADA**

STEVEN M. BELLINO  
EXP. 12-31-12  
CIVIL  
No. 19040

SHEET: **C9**  
54 of 63  
DRAWING# **731-90**

**ATKINS**  
2270 Corporate Circle Suite  
200 Henderson, Nevada  
89074 Telephone:  
702/263-7275  
Fax: 702/263-7200

X:\Projects\100022151\_WashAve\Sheets\22151-4-C9 \*6-05-13 02:30pm