

**ROADWAY CONSTRUCTION NOTES**

- 1 CONSTRUCT PLANTMIX BITUMINOUS SURFACE WITH TYPE II AGGREGATE BASE (SEE DRAWING C8).
- 2 CONSTRUCT 1" OPEN GRADE SURFACE.
- 3 CONSTRUCT 2" UTACS SURFACE.
- 4 CONSTRUCT 2" PLANTMIX BITUMINOUS OVERLAY.
- 5 CONSTRUCT "L" TYPE CURB AND GUTTER PER USD #216.
- 6 CONSTRUCT CONCRETE SIDEWALK PER USD #234.
- 7 SAWCUT AND MATCH EXISTING (SEE GENERAL NOTE 13, DRAWING G1).
- 8 CONSTRUCT CONCRETE CROSS GUTTER PER USD #228 (6' WIDTH TO MATCH EXISTING) AND CONNECT TO EXISTING SPANDREL PER DETAIL 5, DRAWING C8.
- 9 CONSTRUCT TACK-ON MEDIAN PER USD #220.1.51. SEE DRAWING C7.
- 10 CONSTRUCT CONCRETE SIDEWALK RAMP PER USD #235 (CASE 1).
- 11 ADJUST EXISTING MANHOLE COVER TO FINISH GRADE PER USD #408.
- 12 ADJUST EXISTING WATER VALVE BOX COVER TO FINISH GRADE PER UDACS PLATE No. 39. (VALVE SHALL BE ACCESSIBLE AT ALL TIMES).
- 13 REMOVE AND REPLACE No. 3 1/2 PULLBOX PER USD #705 AND #327.
- 14 CONSTRUCT SIDEWALK DRAIN PER DETAIL 1, DRAWING C9.
- 15 CONSTRUCT AC SPEED BUMP TO MATCH EXISTING SPEED BUMP.
- 16 INSTALL 6' X 6' PREFORMED LOOP DETECTORS. SEE DETAIL 2, DRAWING C9 FOR INSTALLATION DETAILS.
- 17 EXISTING SURVEY MONUMENT. CONTRACTOR'S SURVEYOR TO INVENTORY AND LOCATE ALL EXISTING SURVEY MONUMENTS WITHIN THE CONSTRUCTION AREA. ANY MONUMENTS DISTURBED OR DESTROYED SHALL BE REPLACED BY THE CONTRACTOR'S SURVEYOR.

**LEGEND**

- PLANTMIX BITUMINOUS PAVEMENT
- 1" OPEN GRADE SURFACE
- 2" PLANTMIX BITUMINOUS OVERLAY
- REFER TO DRAWING HC1 FOR FOUND POINTS

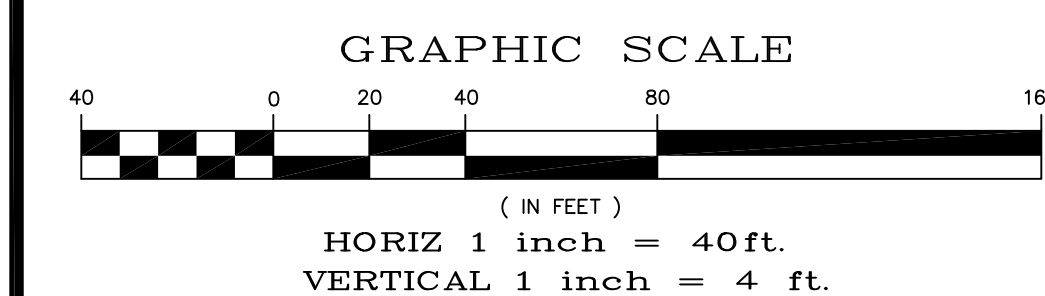
APPROVED FOR CONSTRUCTION

Las Vegas Valley Water District Engineering Services Manager  
 Date \_\_\_\_\_ Project No. XXXXXX ESN 018

Call before you Dig  
 AVOID CUTTING UNDERGROUND UTILITY LINES AT YOUR OWNERS RISK!  
**811**  
 1-800-227-2600

**FAST**  
 Call before you UnderGround  
 1-702-432-5300  
 PREVENT AND REDUCE THE RISK OF UNDERGROUND UTILITY DAMAGE

AVOID HITTING OVERHEAD POWER LINES AT YOUR OWNERS RISK!  
**CALL BEFORE YOU DO OVERHEAD**  
 1-702-227-2929

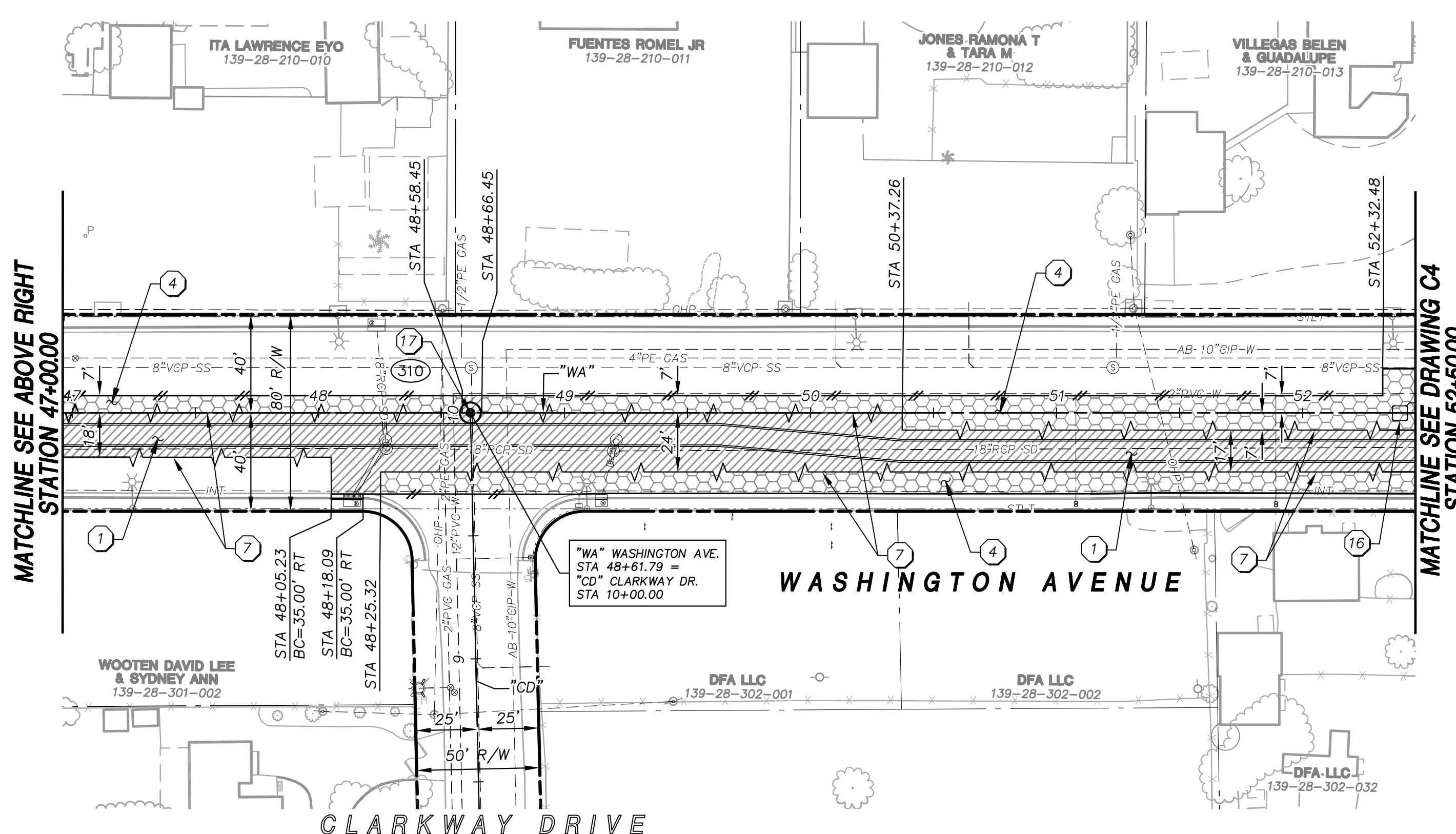


**UTILITY NOTE:**

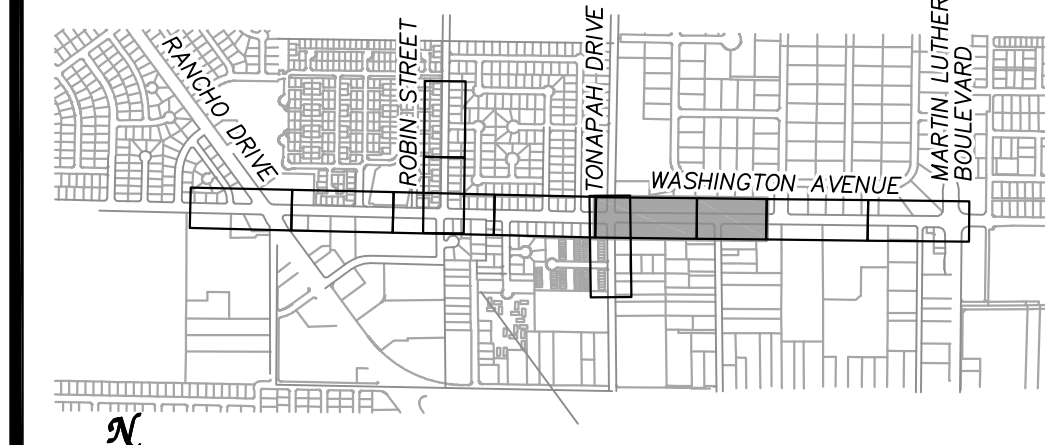
ALL EXISTING UTILITY LOCATIONS SHOWN HEREON ARE APPROXIMATE ONLY. IT SHALL BE THE CONTRACTORS RESPONSIBILITY TO DETERMINE THE EXACT VERTICAL AND HORIZONTAL LOCATION OF ALL EXISTING UNDERGROUND UTILITIES PRIOR TO COMMENCING CONSTRUCTION.

NO REPRESENTATION IS MADE THAT ALL UTILITIES ARE SHOWN HEREON. THE ENGINEER ASSUMES NO RESPONSIBILITY FOR UTILITIES NOT SHOWN IN THEIR PROPER LOCATIONS.

THE DEPTH BELOW GRADE OF THE VARIOUS UTILITIES DEPICTED ON THE PLANS VARIES THROUGHOUT THE PROJECT AREA. THE CONTRACTOR SHALL EXERCISE EXTREME CARE WHEN EXCAVATING AND GRADING THE SUBBASE IN THE VICINITY TO AVOID DAMAGE TO THE LATTER.



**SHEET INDEX**

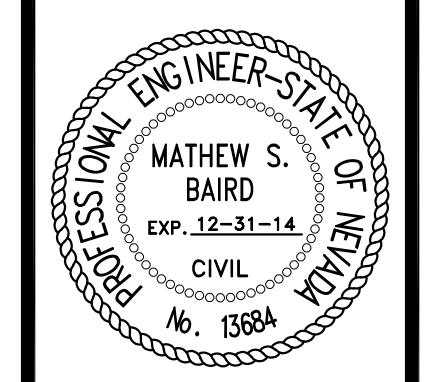


ATKINS

2270 Corporate Circle Suite  
 200 Henderson, Nevada  
 89074 Telephone:  
 702/263-7275  
 Fax: 702/263-7200

DEPARTMENT OF PUBLIC WORKS  
 ENGINEERING DESIGN SECTION  
 CITY ENGINEER: DAVID BOWERS, P.E., P.T.O.E.  
 CITY PROGRAM MANAGER: MARK SORESENSEN, P.E.  
 PROJECT MANAGER: MATT BAIRD, P.E.  
 DESIGN BY: SMB  
 CHECK BY: SCR  
 DRAWN BY: TKS  
 DATE: JUNE 2013

TITLE: FREEWAY CHANNEL - WASHINGTON  
 MLK BOULEVARD TO RANCHO DRIVE  
 (WASHINGTON AVE. STORM DRAIN)  
 SHEET: ROADWAY RE-CONSTRUCTION PLAN  
 WASHINGTON AVENUE  
 STA 39+00.00 TO STA 52+50.00



SHEET: **C3**  
 48 of 63  
 DRAWING# 731-90

X:\Projects\100022151\_WashAve\Sheets\22151-4-C3 \*6-05-13 02:27pm