

ACP WATERLINE TO BE REMOVED AT NEAREST JOINT. SEE SPECIFICATIONS FOR ACP DISPOSAL.

WATERLINE CONSTRUCTION NOTES

- 1 INSTALL 8" C900 PVC WATERLINE PER UDACS PLATE #17.
- 2 INSTALL 8" DIP WATERLINE PER UDACS PLATE #17.
- 3 INSTALL 10" C900 PVC WATERLINE PER UDACS PLATE #17.
- 4 INSTALL 12" C900 PVC WATERLINE PER UDACS PLATE #17.
- 5 INSTALL 10"x10"x10" TAPPING SLEEVE WITH 10" TAPPING VALVE PER UDACS PLATE #34.
- 6 INSTALL 11.25" ELBOW
- 7 INSTALL 45" ELBOW
- 8 INSTALL 90" ELBOW
- 9 INSTALL THRUST BLOCK PER UDACS PLATE #31.
- 10 CONNECT TO EXISTING WATERLINE PER DETAIL 2, DRAWING SD21.
- 11 INSTALL 8"x8"x8" TEE WITH 8" GATE VALVE WITH ANCHOR BLOCKS PER UDACS PLATE #30.
- 12 CONNECT TO EXISTING GATE VALVE.
- 13 INSTALL 10"x10"x10" TEE WITH 10" GATE VALVE WITH ANCHOR BLOCKS PER UDACS PLATE #30 AND THRUST BLOCK PER UDACS PLATE #31.
- 14 INSTALL 10" GATE VALVE WITH ANCHOR BLOCK PER UDACS PLATE #30.
- 15 INSTALL 10"x8" REDUCER.
- 16 INSTALL 10"x10"x10" TEE WITH THRUST BLOCK PER UDACS PLATE #31.
- 17 INSTALL 2" BLOW OFF ASSEMBLY PER UDACS PLATE #36.

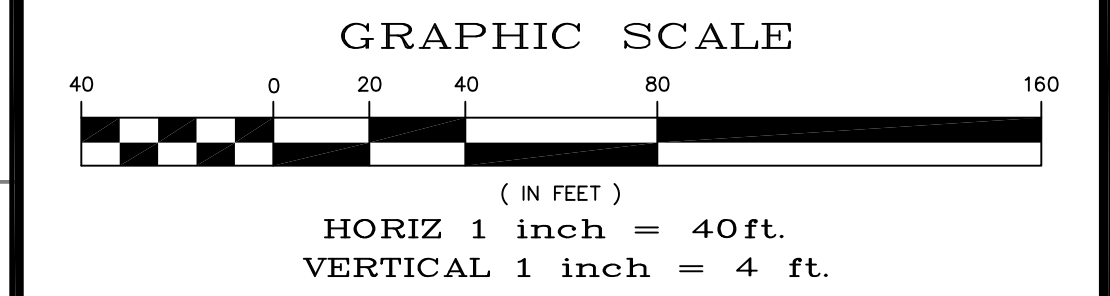
DEPARTMENT OF PUBLIC WORKS
ENGINEERING DESIGN SECTION
 CITY ENGINEER: DAVID BOWERS, P.E., P.T.O.E.
 CITY PROGRAM MANAGER: MARK SORESENSEN, P.E.
 PROJECT MANAGER: MATT BAIRD, P.E.
 DESIGN BY: SMB
 CHECK BY: SCR
 DRAWN BY: DUE
 DATE: JUNE 2013

APPROVED FOR CONSTRUCTION
 Las Vegas Valley Water District Engineering Services Manager
 Date _____ Project No. XXXXXX ESN 018

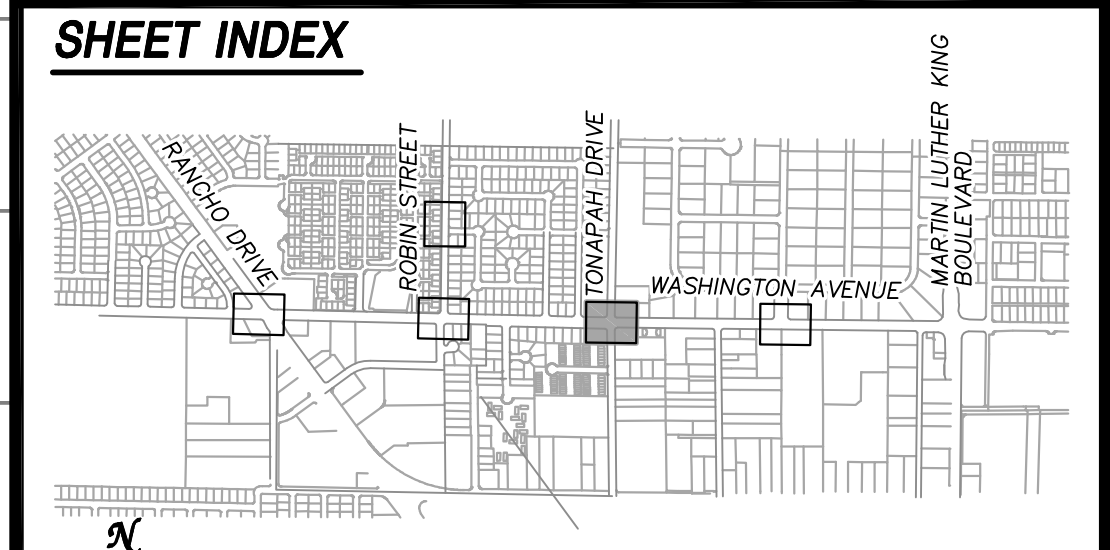
Call before you Dig
 811
 1-800-227-2600

FAST
 Call before you UnderGround
 1-702-432-5300

CALL BEFORE YOU DIG OVERHEAD
 1-702-227-2929

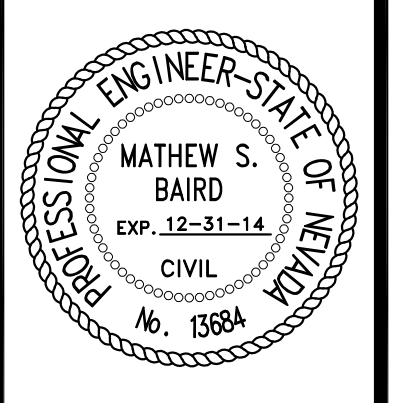


UTILITY NOTE:
 ALL EXISTING UTILITY LOCATIONS SHOWN HEREON ARE APPROXIMATE ONLY. IT SHALL BE THE CONTRACTORS RESPONSIBILITY TO DETERMINE THE EXACT VERTICAL AND HORIZONTAL LOCATION OF ALL EXISTING UNDERGROUND UTILITIES PRIOR TO COMMENCING CONSTRUCTION.
 NO REPRESENTATION IS MADE THAT ALL UTILITIES ARE SHOWN HEREON. THE ENGINEER ASSUMES NO RESPONSIBILITY FOR UTILITIES NOT SHOWN IN THEIR PROPER LOCATIONS.
 THE DEPTH BELOW GRADE OF THE VARIOUS UTILITIES DEPICTED ON THE PLANS VARIES THROUGHOUT THE PROJECT AREA. THE CONTRACTOR SHALL EXERCISE EXTREME CARE WHEN EXCAVATING AND GRADING THE SUBBASE IN THE VICINITY TO AVOID DAMAGE TO THE LATTER.

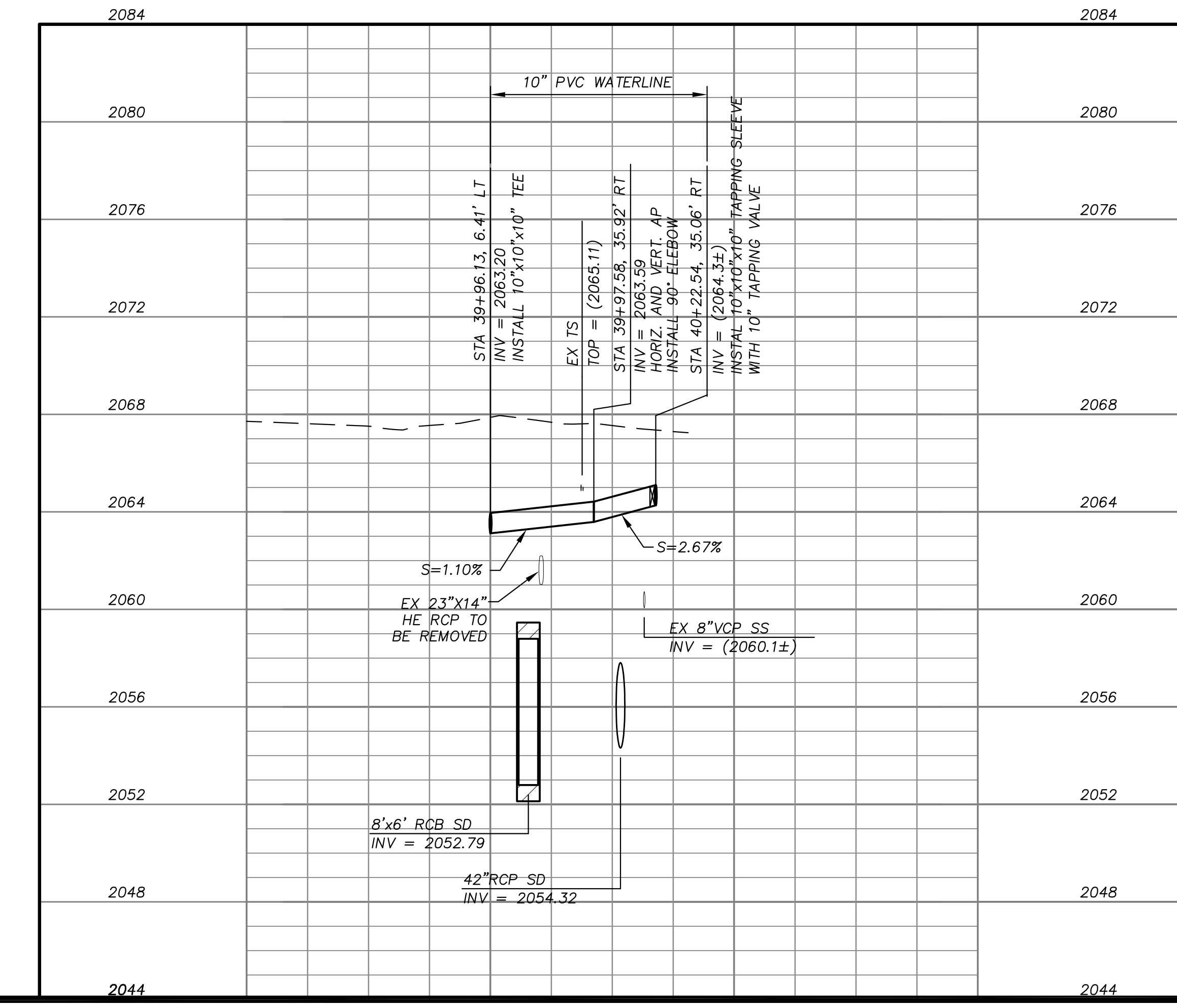
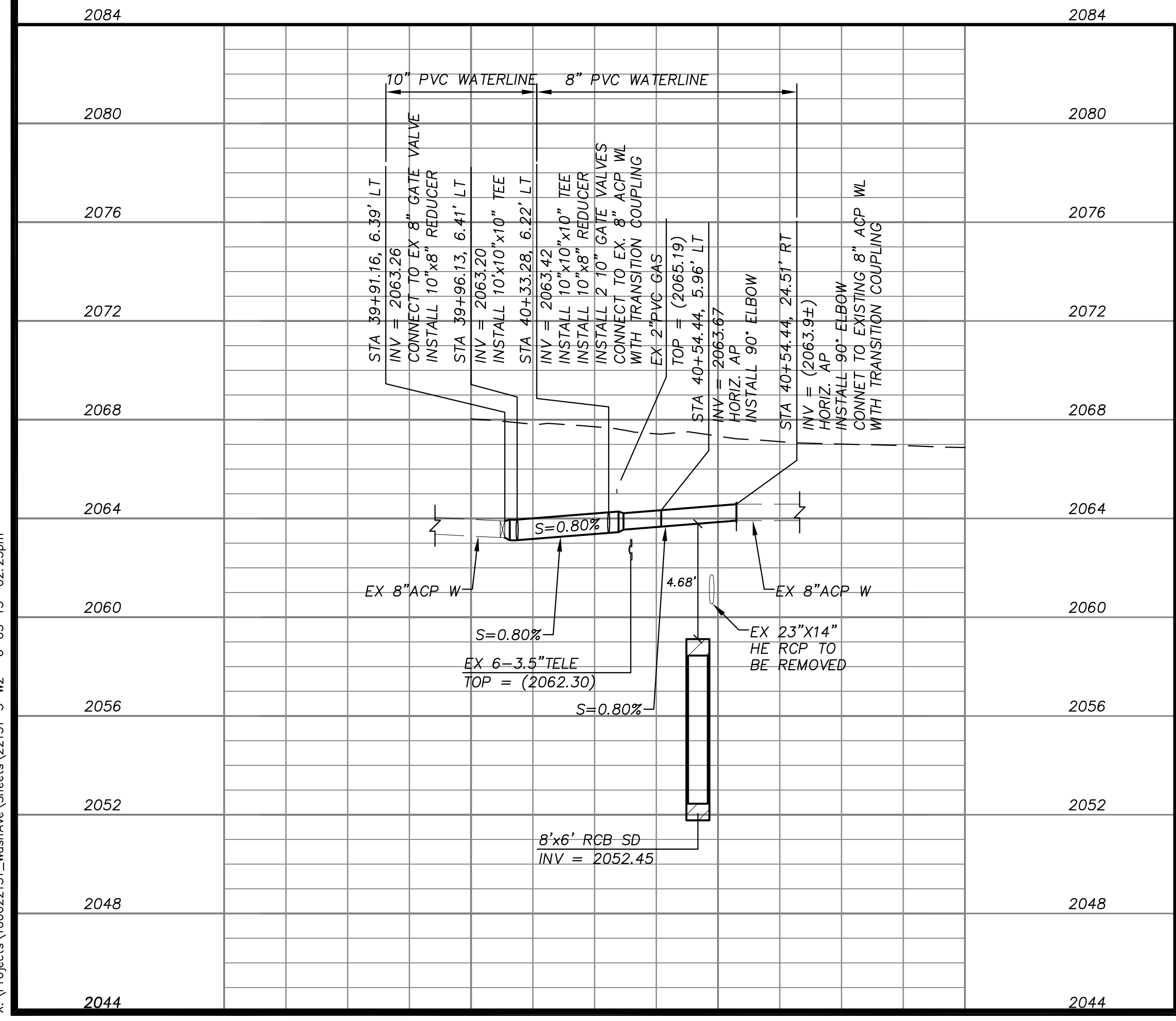


ATKINS
 2270 Corporate Circle Suite
 200 Henderson, Nevada
 89074 Telephone:
 702/263-7275
 Fax: 702/263-7200

FREEWAY CHANNEL - WASHINGTON
MLK BOULEVARD TO RANCHO DRIVE
(WASHINGTON AVE. STORM DRAIN)
WATERLINE RELOCATION
PLAN AND PROFILE



SHEET: **W2**
 44 of 63
 DRAWING# **731-90**



X:\Projects\10022151_WashAve_Sheets\22151-3-W2_#6-05-13 02:23pm

NOT FOR CONSTRUCTION 70% SUBMITTAL