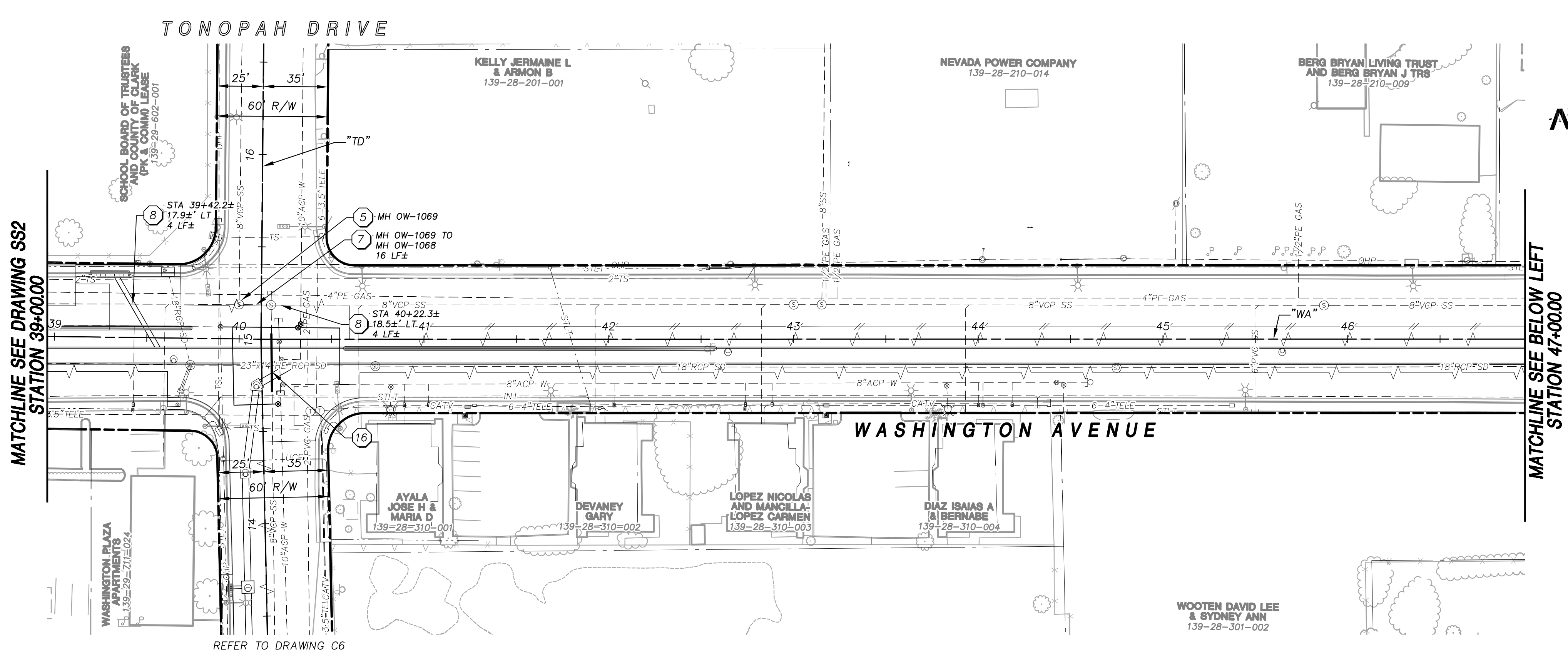


X:\Projects\100022151_WashAve_Sheets\22151-3-SS3 *6-05-13 02:16pm



- ### SANITARY SEWER CONSTRUCTION NOTES
- 1 INSTALL 10" SDR-35 PVC SS PER DCSWCS SD-18
 - 2 INSTALL 12" SDR-35 PVC SS PER DCSWCS SD-18
 - 3 INSTALL 48" SSMH PER DCSWCS SD-1A
 - 4 INSTALL 48" SSMH PER DCSWCS SD-1A WITH CAST-IN-PLACE MANHOLE BASE PER SD-7
 - 5 INSTALL MANHOLE REHABILITATION COATING ON EXISTING 48" SSMH (SEE SPECIFICATIONS SECTION 691)
 - 6 INSTALL MANHOLE REHABILITATION COATING ON EXISTING 48" SSMH CHANNEL AND BENCH ONLY (SEE SPECIFICATION SECTION 691)
 - 7 INSTALL 8" CURED-IN-PLACE PIPE LINER. (SEE SPECIFICATIONS SECTION 690)
 - 8 POINT REPAIR EXISTING 8"SS WITH CURED-IN-PLACE PIPE LINER. (SEE SPECIFICATION SECTION 689)
 - 9 CONNECT TO EXISTING 48" SSMH, MODIFY BASE.
 - 10 PLUG EXISTING SANITARY SEWER
 - 11 CONNECT TO EXISTING SANITARY SEWER WITH RUBBER COUPLING
 - 12 CONNECT EXISTING SANITARY SEWER LATERAL TO PROPOSED SEWER PER DCSWCS SD-22 AND SD-23
 - 13 PROTECT-IN-PLACE, CONTRACTOR TO SUPPORT UTILITY ACROSS THE TRENCH. ANY DESIGN REQUIRED TO SUPPORT THE UTILITY SHALL BE DONE BY THE CONTRACTOR'S ENGINEER AND SHALL BE LICENSED IN THE STATE OF NEVADA. (NO DIRECT PAYMENT)
 - 14 INSTALL SANITARY SEWER PROTECTION PER DCSWCS SD-21
 - 15 INSTALL 8" SDR-35 PVC SS PER DCSWCS SD-18
 - 16 REMOVE AND REPLACE EXISTING VCP SANITARY SEWER PER DCSWCS SD-20.

DEPARTMENT OF PUBLIC WORKS
ENGINEERING DESIGN SECTION

DAVID BOMERS, P.E., P.T.O.E.
CITY PROGRAM MANAGER

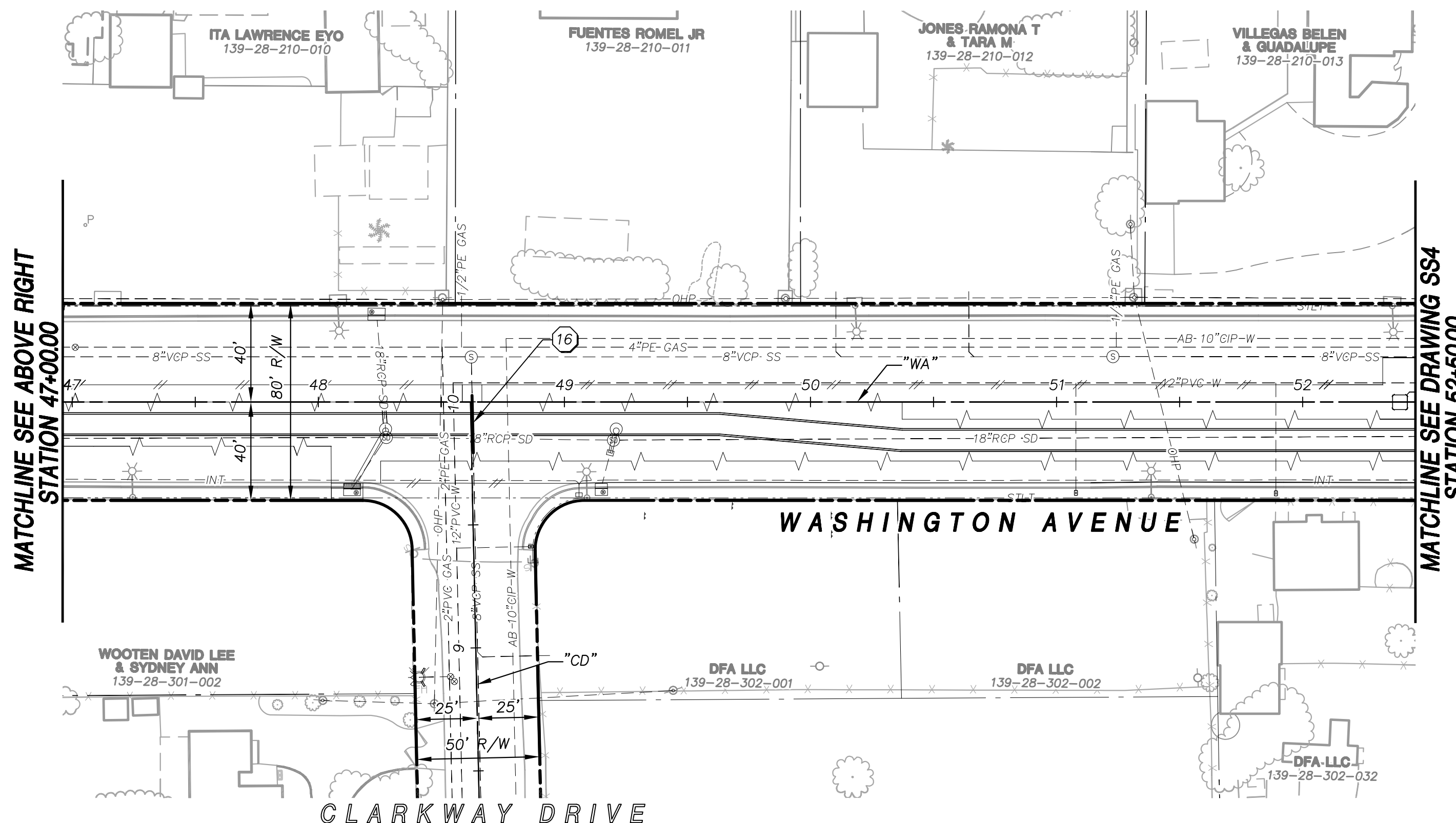
MATT BAIRD, P.E.
PROJECT MANAGER

MARK SORENSEN, P.E.
DESIGN BY

SMB
CHECK BY

DUE
DRAWN BY

DATE: JUNE 2013



APPROVED FOR CONSTRUCTION

Las Vegas Valley Water District Engineering Services Manager
Date _____ Project No. XXXXXX ESN 018

Call before you Dig
and cutting underground
utilities is your
responsibility.

1-800-227-2600

FAST

Call before you
Underground

1-702-432-5300

PREVENT AND AVOID
EXTENSIVE AND COSTLY
SYSTEMS OF TRANSPORTATION

CALL BEFORE
YOU DIG
OVERHEAD

1-702-227-2929

GRAPHIC SCALE

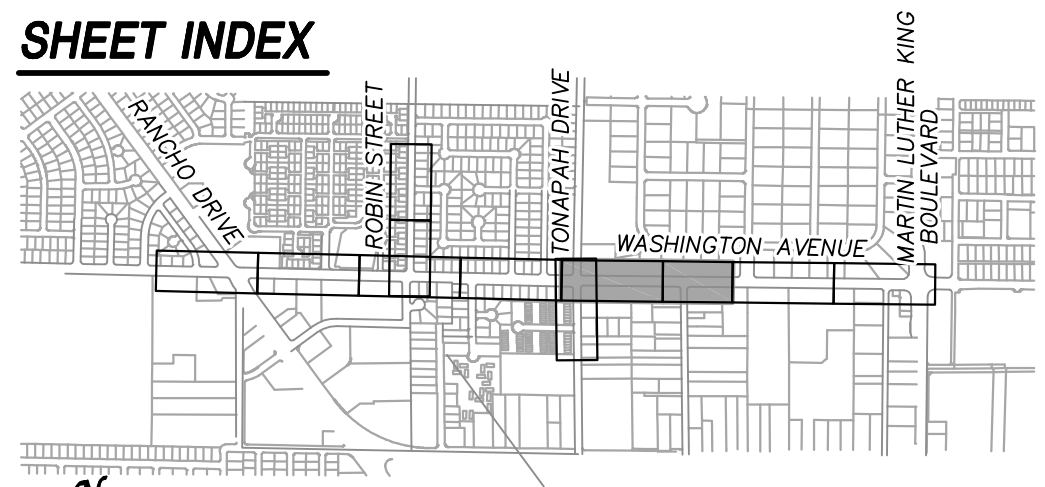
(IN FEET)
HORIZ 1 inch = 40ft.
VERTICAL 1 inch = 4 ft.

UTILITY NOTE:

ALL EXISTING UTILITY LOCATIONS SHOWN HEREON ARE APPROXIMATE ONLY. IT SHALL BE THE CONTRACTORS RESPONSIBILITY TO DETERMINE THE EXACT VERTICAL AND HORIZONTAL LOCATION OF ALL EXISTING UNDERGROUND UTILITIES PRIOR TO COMMENCING CONSTRUCTION.

NO REPRESENTATION IS MADE THAT ALL UTILITIES ARE SHOWN HEREON. THE ENGINEER ASSUMES NO RESPONSIBILITY FOR UTILITIES NOT SHOWN IN THEIR PROPER LOCATIONS.

THE DEPTH BELOW GRADE OF THE VARIOUS UTILITIES DEPICTED ON THE PLANS VARIES THROUGHOUT THE PROJECT AREA. THE CONTRACTOR SHALL EXERCISE EXTREME CARE WHEN EXCAVATING AND GRADING THE SUBBASE IN THE VICINITY TO AVOID DAMAGE TO THE LATTER.

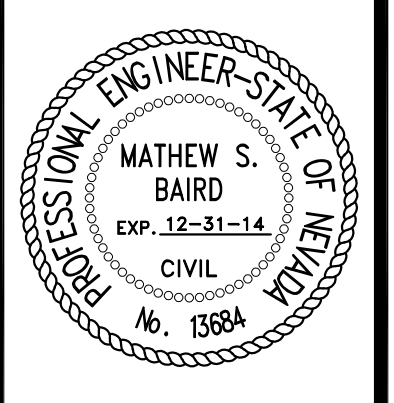


ATKINS

2270 Corporate Circle Suite
200 Henderson, Nevada
89074 Telephone:
702/263-7275
Fax: 702/263-7200

TITLE: FREEWAY CHANNEL - WASHINGTON
MLK BOULEVARD TO RANCHO DRIVE
(WASHINGTON AVE. STORM DRAIN)

SHEET: SANITARY SEWER PLAN
WASHINGTON AVENUE
STA. 39+00.00 TO STA. 52+50.00



SHEET: **SS3**
#7 of 63
DRAWING# 731-90

NOT FOR CONSTRUCTION 70% SUBMITTAL