

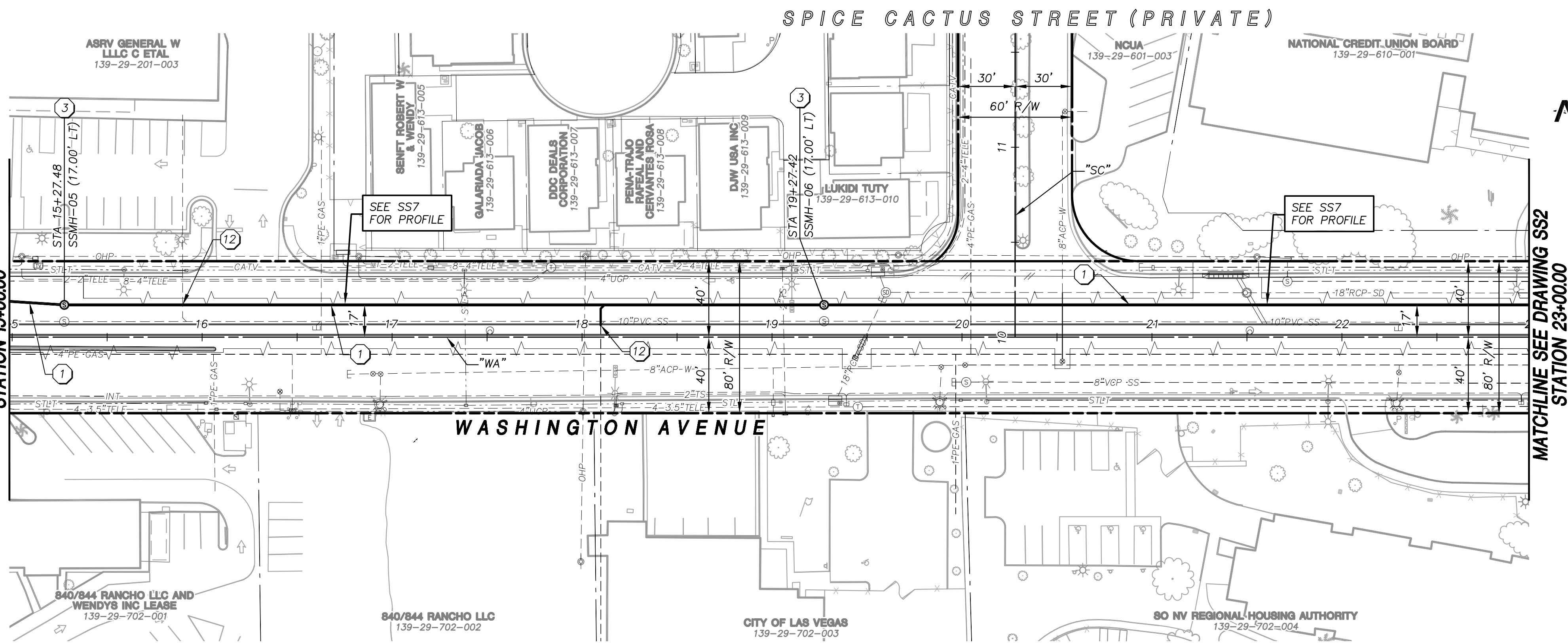
SOUTHERN NEVADA WATER AUTHORITY
 SNWA APPROVAL IS VALID FOR (1) YEAR FROM THE SIGNATURE DATE. IF CONSTRUCTION WITHIN THE EASEMENT OR RESTRICTED PIPE SAFETY ZONE IS NOT COMPLETE, PLANS MUST BE RESUBMITTED TO SNWA FOR APPROVAL.

CONTRACTOR SHALL FIELD LOCATE AND PROTECT ALL SNWA/SNWS APPURTENANCES INCLUDING, BUT NOT LIMITED TO AV/AR, ACCESS MANWAYS AND CATHODIC PROTECTION SYSTEMS. ALL ABOVE GROUND STRUCTURES AND AT GRADE STRUCTURES MUST BE ADJUSTED TO NEW GRADE AT CONTRACTOR'S EXPENSE. CATHODIC PROTECTION TEST STATIONS, RECTIFIERS, AND AV/AR'S MUST BE RELOCATED TO THE SIDEWALK PER SNWA STANDARDS, AND AT THE CONTRACTOR'S EXPENSE. CONTRACTOR TO NOTIFY SOUTHERN NEVADA WATER AUTHORITY, DEVELOPMENT PLAN REVIEW, AT (702) 862-3444 AT LEAST 48 HOURS PRIOR TO CONSTRUCTION ACTIVITY.

- ### SANITARY SEWER CONSTRUCTION NOTES
- INSTALL 10" SDR-35 PVC SS PER DCSWCS SD-18
 - INSTALL 12" SDR-35 PVC SS PER DCSWCS SD-18
 - INSTALL 48" SSMH PER DCSWCS SD-1A
 - INSTALL 48" SSMH PER DCSWCS SD-1A WITH CAST-IN-PLACE MANHOLE BASE PER SD-7
 - INSTALL MANHOLE REHABILITATION COATING ON EXISTING 48" SSMH (SEE SPECIFICATIONS SECTION 691)
 - INSTALL MANHOLE REHABILITATION COATING ON EXISTING 48" SSMH CHANNEL AND BENCH ONLY (SEE SPECIFICATION SECTION 691)
 - INSTALL 8" CURED-IN-PLACE PIPE LINER. (SEE SPECIFICATIONS SECTION 690)
 - POINT REPAIR EXISTING 8"SS WITH CURED-IN-PLACE PIPE LINER. (SEE SPECIFICATION SECTION 689)
 - CONNECT TO EXISTING 48" SSMH, MODIFY BASE.
 - PLUG EXISTING SANITARY SEWER
 - CONNECT TO EXISTING SANITARY SEWER WITH RUBBER COUPLING
 - CONNECT EXISTING SANITARY SEWER LATERAL TO PROPOSED SEWER PER DCSWCS SD-22 AND SD-23
 - PROTECT-IN-PLACE CONTRACTOR TO SUPPORT UTILITY ACROSS THE TRENCH. ANY DESIGN REQUIRED TO SUPPORT THE UTILITY SHALL BE DONE BY THE CONTRACTOR'S ENGINEER AND SHALL BE LICENSED IN THE STATE OF NEVADA. (NO DIRECT PAYMENT)
 - INSTALL SANITARY SEWER PROTECTION PER DCSWCS SD-21
 - INSTALL 8" SDR-35 PVC SS PER DCSWCS SD-18
 - REMOVE AND REPLACE EXISTING VCP SANITARY SEWER PER DCSWCS SD-20.

DEPARTMENT OF PUBLIC WORKS
 ENGINEERING DESIGN SECTION

CITY ENGINEER: DAVID BOMERS, P.E., P.T.O.E.
 CITY PROGRAM MANAGER: MARK SORENSEN, P.E.
 PROJECT MANAGER: MATT BAIRD, P.E.
 DESIGN BY: SMB
 CHECK BY: SCR
 DRAWN BY: DUE
 DATE: JUNE 2013



APPROVED FOR CONSTRUCTION

Las Vegas Valley Water District Engineering Services Manager
 Date: _____ Project No. XXXXXX ESN 018

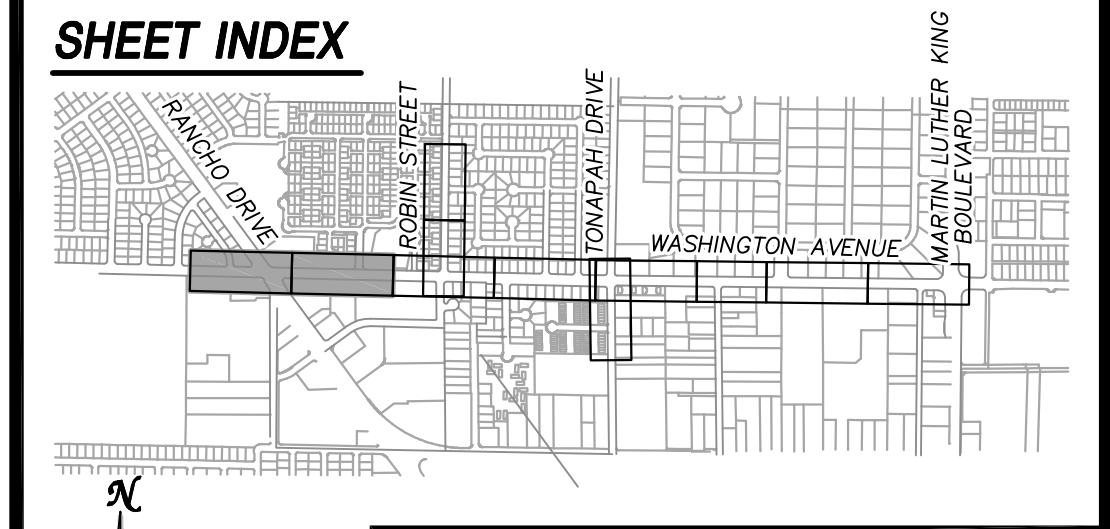
Call before you Dig
 Call 811
 1-800-227-2600

FAST
 Call before you UnderGround
 1-702-432-5300

CALL BEFORE YOU DO OVERHEAD
 1-702-227-2929

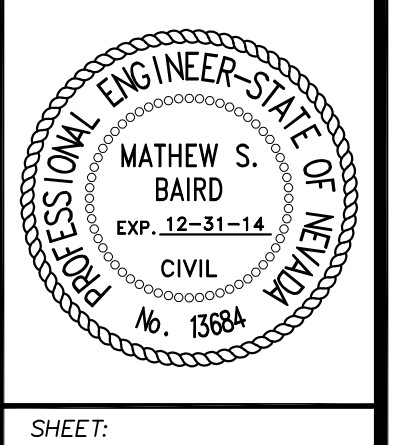
GRAPHIC SCALE
 (IN FEET)
 HORIZ 1 inch = 40ft.
 VERTICAL 1 inch = 4 ft.

UTILITY NOTE:
 ALL EXISTING UTILITY LOCATIONS SHOWN HEREON ARE APPROXIMATE ONLY. IT SHALL BE THE CONTRACTOR'S RESPONSIBILITY TO DETERMINE THE EXACT VERTICAL AND HORIZONTAL LOCATION OF ALL EXISTING UNDERGROUND UTILITIES PRIOR TO COMMENCING CONSTRUCTION.
 NO REPRESENTATION IS MADE THAT ALL UTILITIES ARE SHOWN HEREON. THE ENGINEER ASSUMES NO RESPONSIBILITY FOR UTILITIES NOT SHOWN IN THEIR PROPER LOCATIONS.
 THE DEPTH BELOW GRADE OF THE VARIOUS UTILITIES DEPICTED ON THE PLANS VARIES THROUGHOUT THE PROJECT AREA. THE CONTRACTOR SHALL EXERCISE EXTREME CARE WHEN EXCAVATING AND GRADING THE SUBBASE IN THE VICINITY TO AVOID DAMAGE TO THE LATTER.



TITLE: **FREEWAY CHANNEL - WASHINGTON MLK BOULEVARD TO RANCHO DRIVE (WASHINGTON AVE. STORM DRAIN)**

SHEET: **SANITARY SEWER PLAN WASHINGTON AVENUE STA. 7+00.00 TO STA. 23+00.00**



ATKINS
 2270 Corporate Circle Suite 200 Henderson, Nevada 89074
 Telephone: 702/263-7275
 Fax: 702/263-7200

SHEET: **SS1**
35 of 63
 DRAWING: **731-90**

NOT FOR CONSTRUCTION 70% SUBMITTAL

X:\Projects\100022151_WashAve\Sheets\22151-3-SS1_16-06-13_07:08am