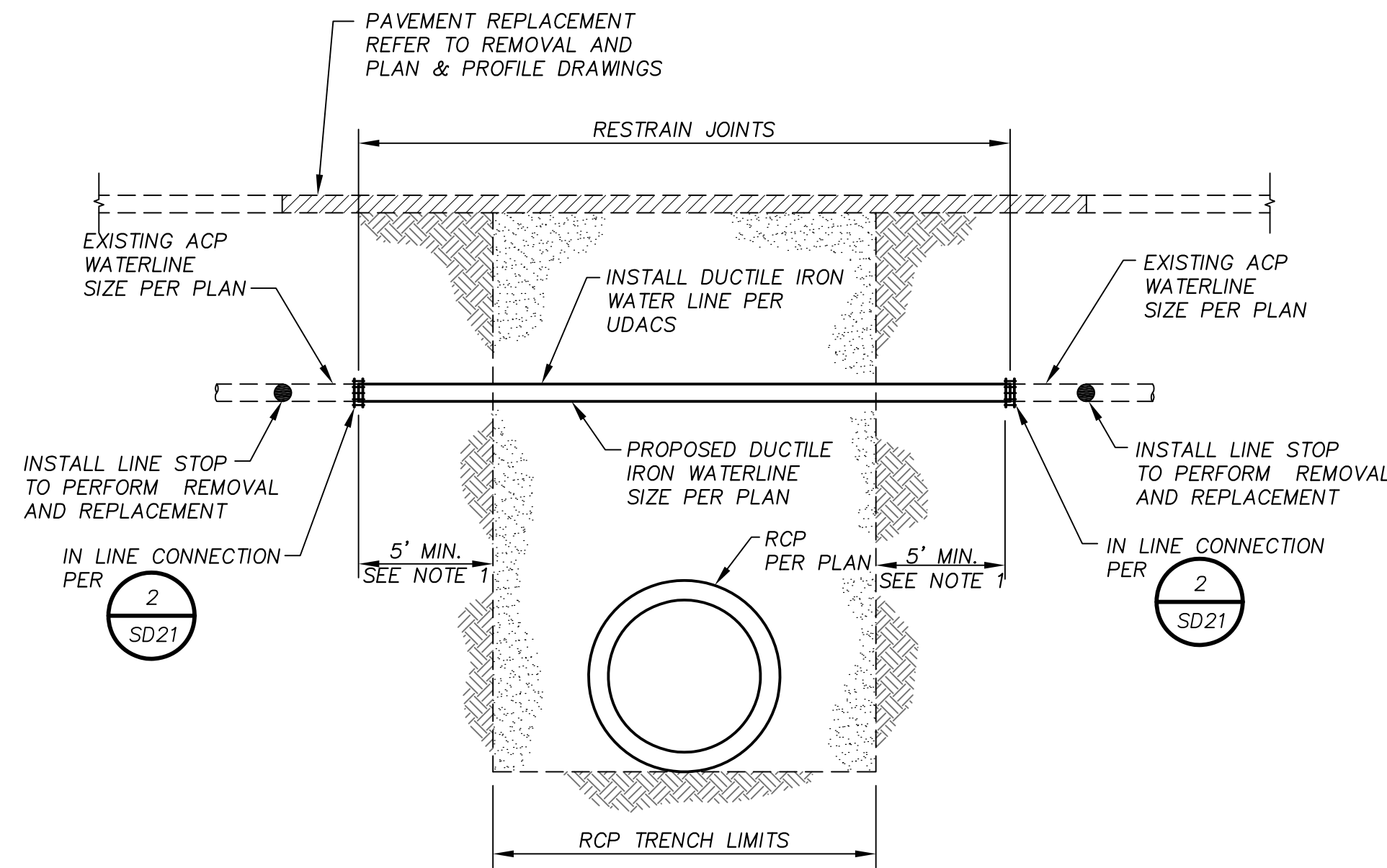


X:\Projects\00022151_WashAve\Sheets\22151-3-SD21 *6-05-13 02:14pm



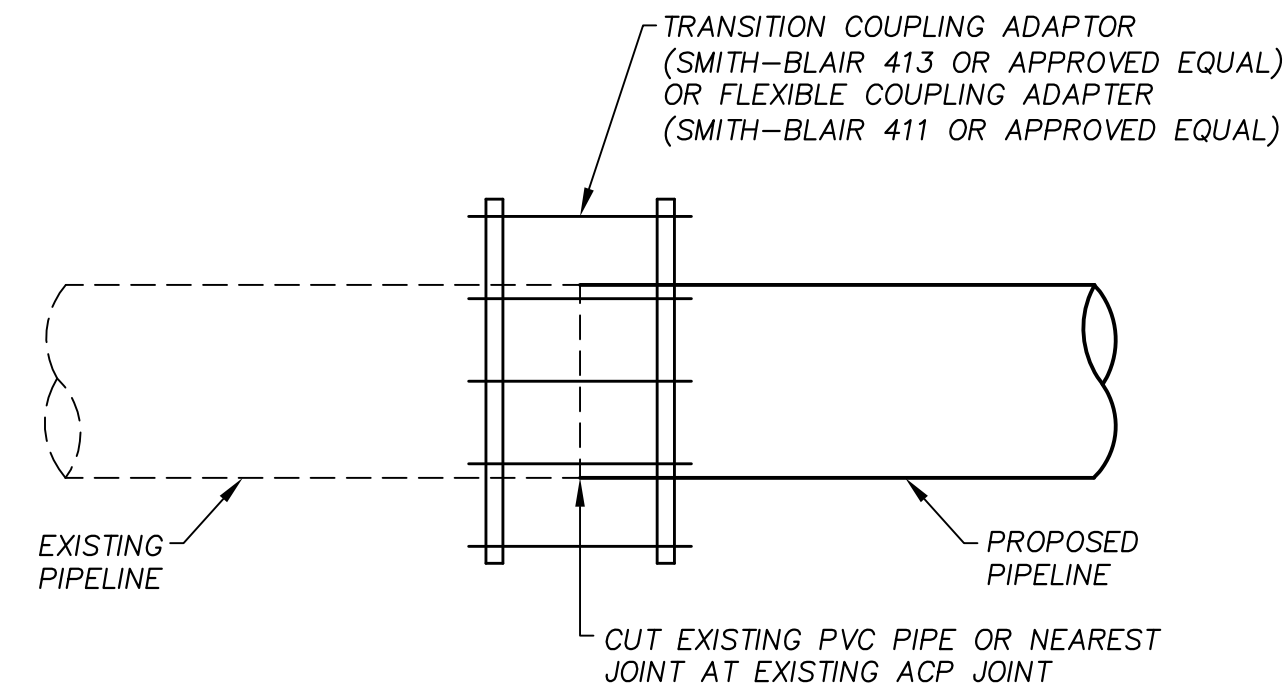
NOTES:

1. ACP IS TO BE REMOVED TO THE NEAREST JOINT BUT MUST BE REPLACED A MIN. OF 5' BEYOND RCP/RCB TRENCH LIMIT. IF REMOVAL LIMIT OF PIPE IS WITHIN 5' OF AN EXISTING VALVE, REPLACE ACP TO EXISTING VALVE.

ACP WATERLINE REPLACEMENT

N.T.S.

1
SD21



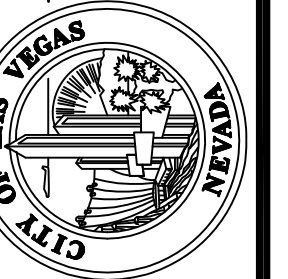
TYPICAL IN-LINE CONNECTION

N.T.S.

2
SD21

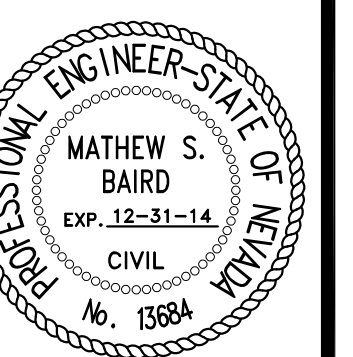
DEPARTMENT OF PUBLIC WORKS
ENGINEERING DESIGN SECTION

CITY ENGINEER: DAVID BOWERS, P.E., P.T.O.E.
CITY PROGRAM MANAGER: MARK SORENSEN, P.E.
PROJECT MANAGER: MATT BAIRD, P.E.
DESIGN BY: SMB
CHECK BY: SCR
DRAWN BY: DUE
DATE: JUNE 2013



TITLE: **FREEWAY CHANNEL - WASHINGTON
MLK BOULEVARD TO RANCHO DRIVE
(WASHINGTON AVE. STORM DRAIN)**

SHEET: **DETAILS**



SHEET:

SD21

34 of 63

DRAWING#
731-90

ATKINS
2270 Corporate Circle Suite
200 Henderson, Nevada
89074 Telephone:
702/263-7275
Fax: 702/263-7200

NOT FOR CONSTRUCTION 70% SUBMITTAL