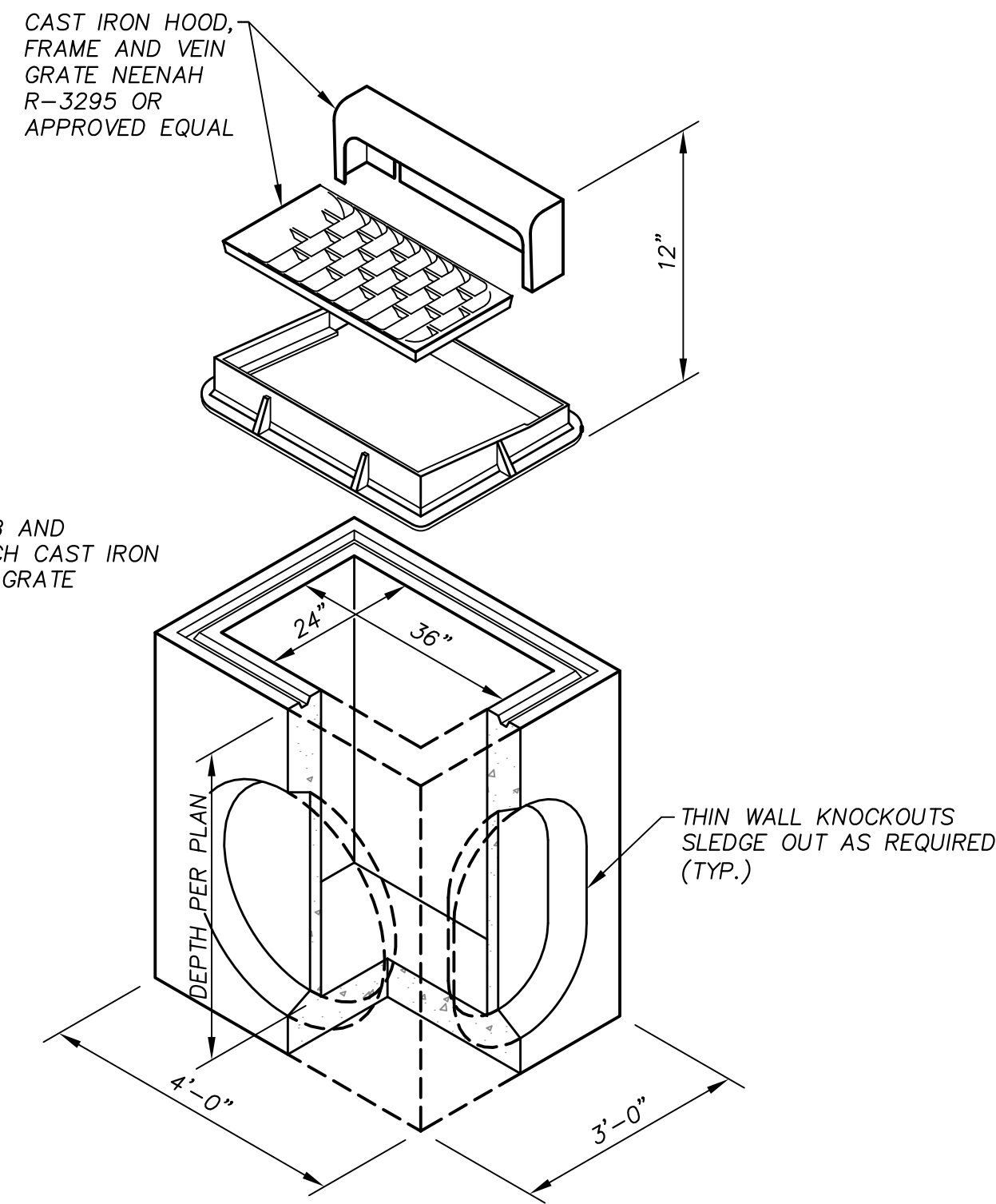
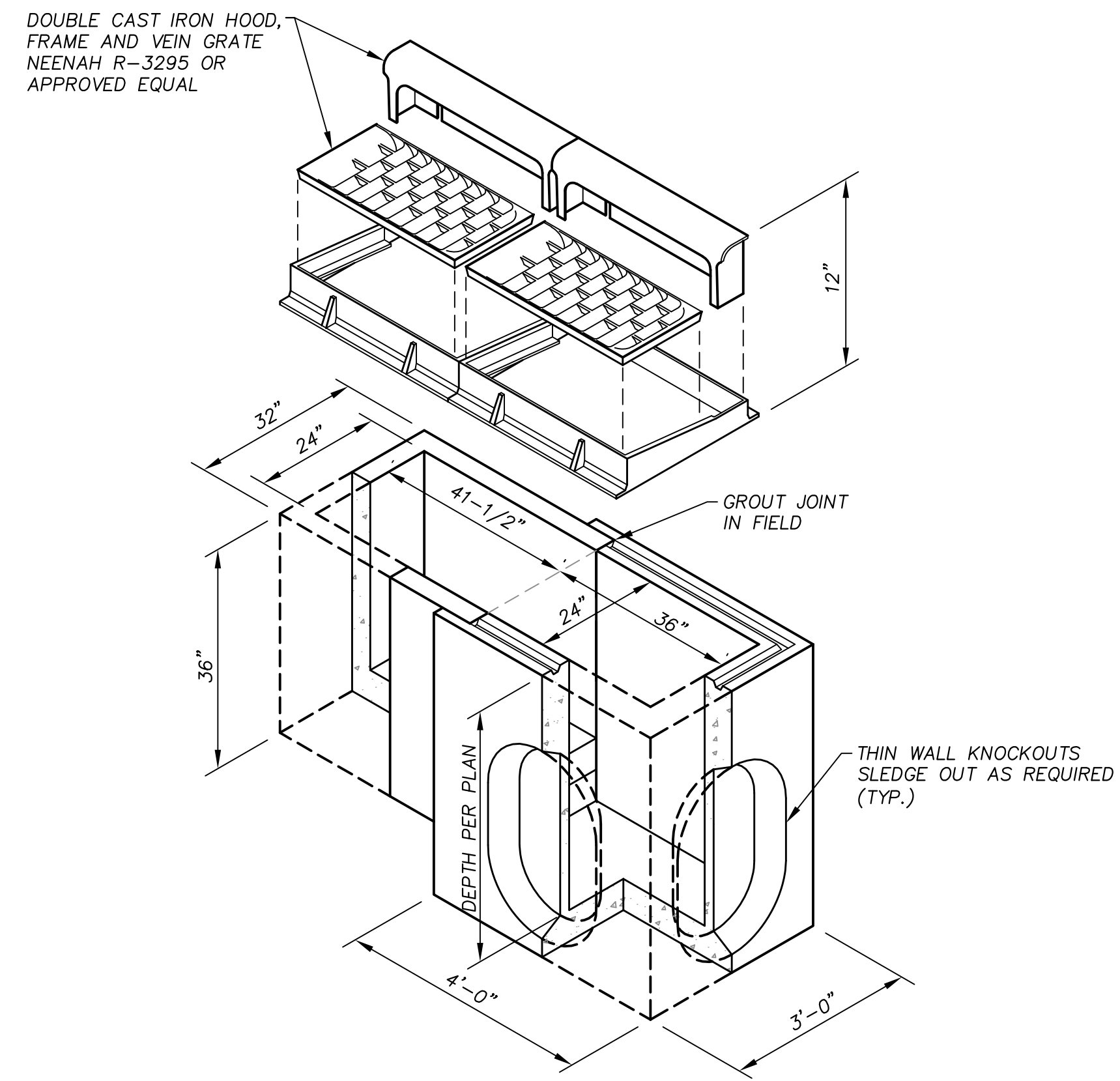


NOTES:

1. DROP INLET, SHOWN, AND EXTENSIONS AS NECESSARY ARE BY JENSEN PRE-CAST. SUBMIT "OR EQUAL" ALTERNATIVES FOR APPROVAL.
2. SLOPE BOTTOM OF INLET TO DRAIN WITH GROUT.
3. GROUT AROUND THE CIRCUMFERENCE OF THE RCP OUTLET PIPE AND THE PRE-CAST INLET.
4. REFER TO DETAIL 4 THIS SHEET FOR PAVEMENT AND SIDEWALK DETAILS AT CURB INLET.

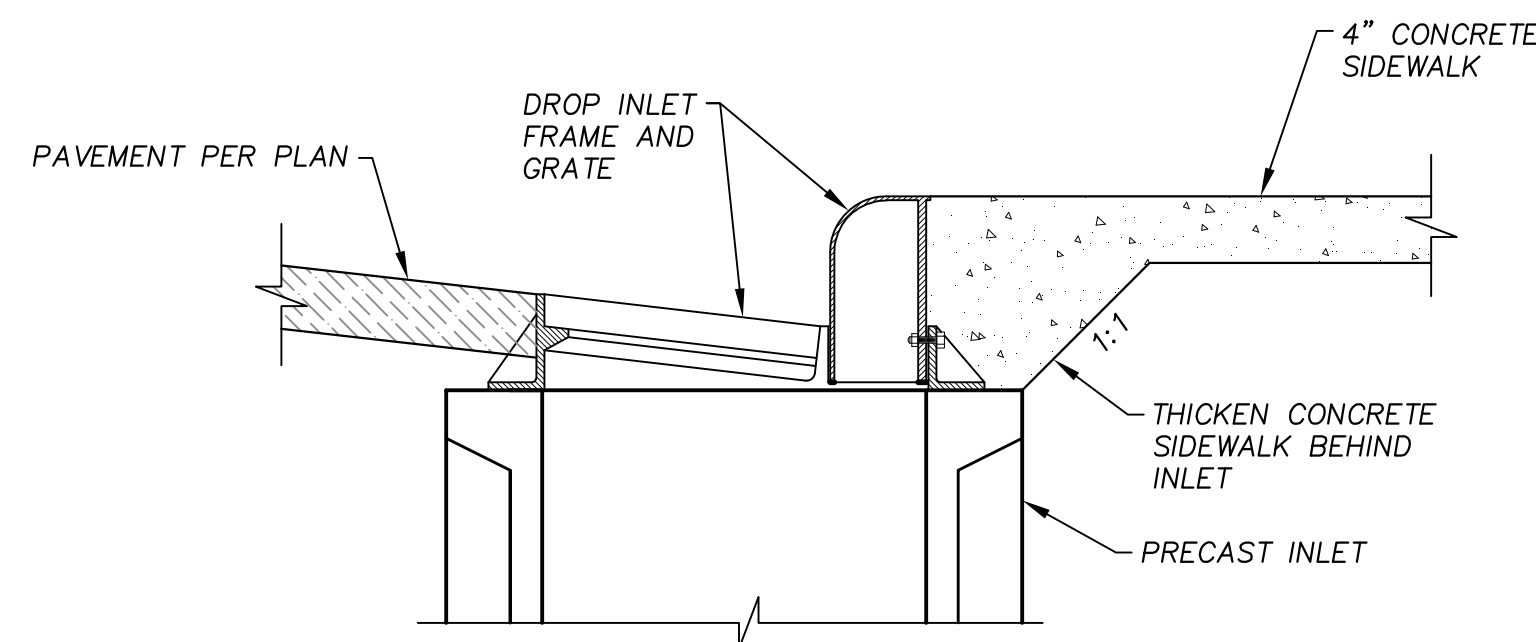
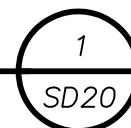


SINGLE

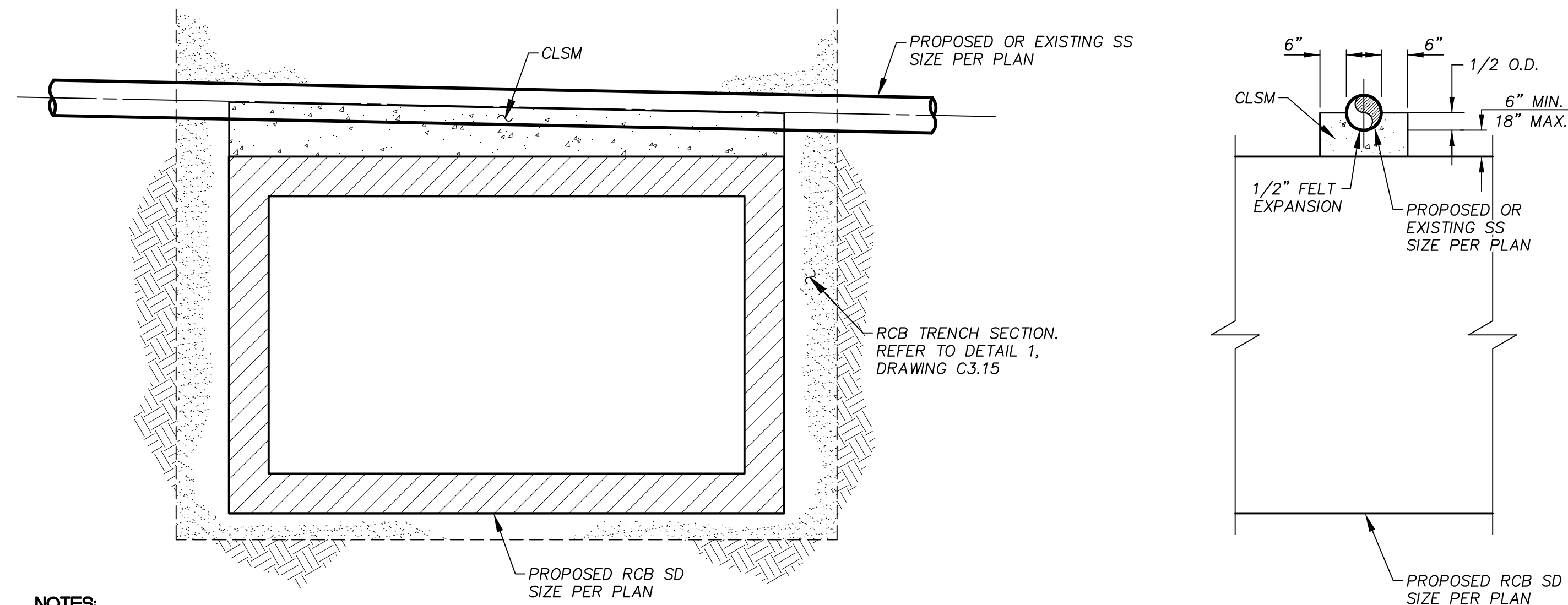


DOUBLE

CURB INLET
N.T.S.



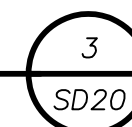
PAVEMENT AND SIDEWALK AT CURB INLET
N.T.S.



NOTES:

1. NO PAYMENT SHALL BE MADE FOR THE PROTECTION OF THE SANITARY SEWER MAIN. THE COST SHALL BE INCIDENTAL TO OTHER ITEMS OF WORK.
2. IF CONTRACTOR CHOOSES NOT TO PROTECT-IN-PLACE THE EXISTING SEWER THEN THE SEWER SEWER SHALL BE REMOVED AND REPLACED PER DCSWCS SD-20. NO PAYMENT SHALL BE MADE FOR THE REMOVAL AND REPLACEMENT OF THE EXISTING PIPE. THE COST SHALL BE INCIDENTAL TO OTHER ITEMS OF WORK.

SANITARY SEWER MAIN PROTECTION
N.T.S.



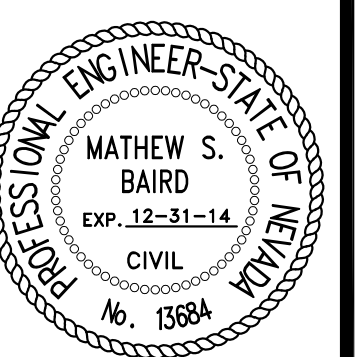
DEPARTMENT OF PUBLIC WORKS
ENGINEERING DESIGN SECTION



DAVID BOWERS, P.E., P.T.O.E.
MARK SORENSEN, P.E.
CITY ENGINEER
CITY PROGRAM MANAGER
MATT BAIRD, P.E.
PROJECT MANAGER
SMB
DESIGN BY
DUE
CHECK BY
SCOR
DATE: JUNE 2013
DRAWN BY

TITLE: **FREEWAY CHANNEL - WASHINGTON
MLK BOULEVARD TO RANCHO DRIVE
(WASHINGTON AVE. STORM DRAIN)**

DETAILS



SHEET:

SD20

33 of 63

DRAWING#
731-90

ATKINS
2270 Corporate Circle Suite
200 Henderson, Nevada
89074 Telephone:
702/263-7275
Fax: 702/263-7200

NOT FOR CONSTRUCTION 70% SUBMITTAL