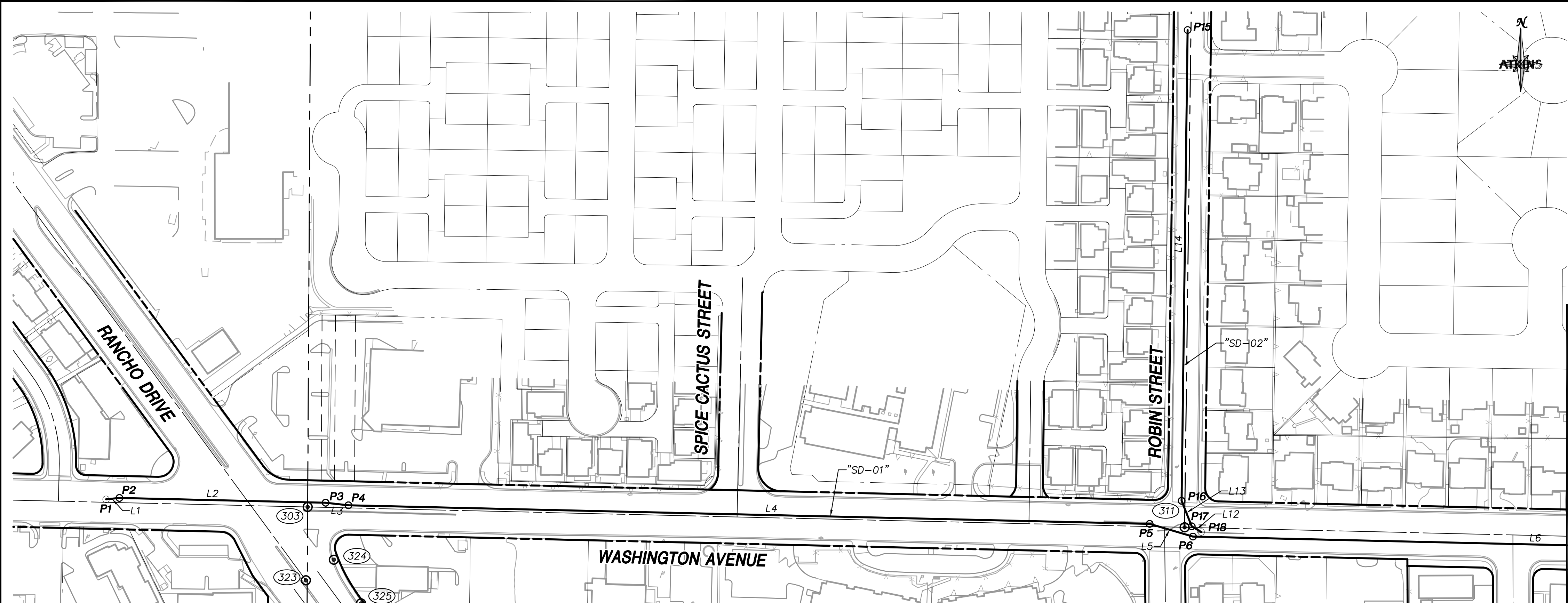


X:\Projects\100022151\_WashAve\_Sheets\22151-1-HC3 \*6-05-13 01:45pm



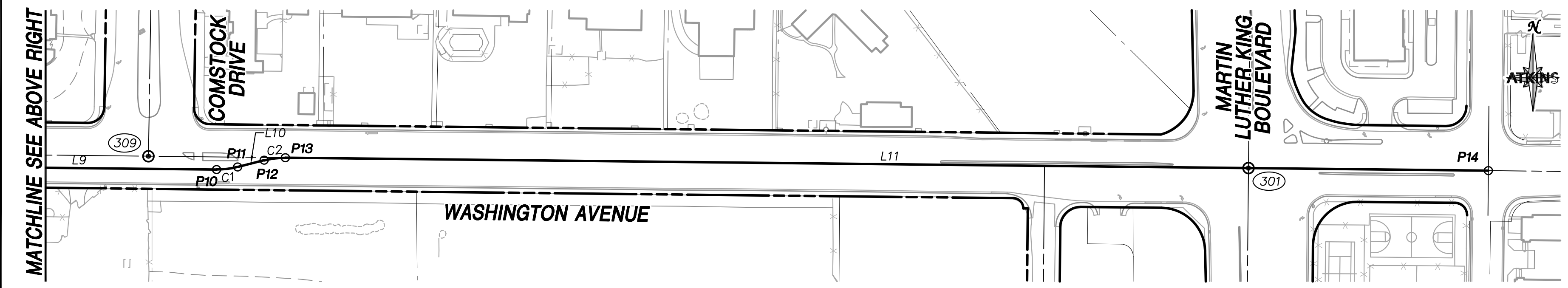
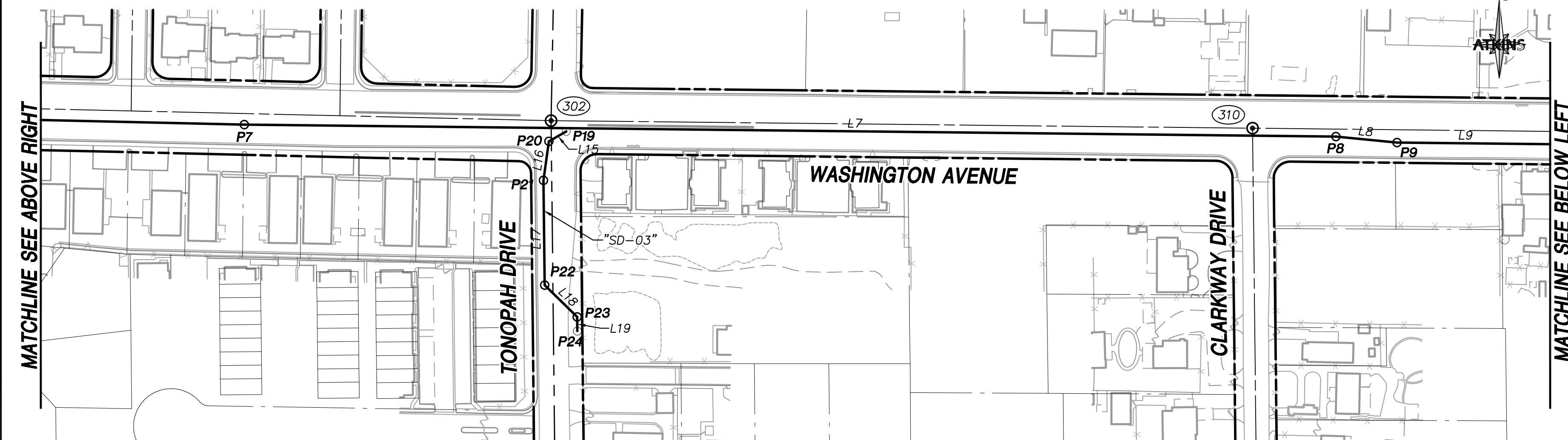
**BASIS OF BEARING**  
 GRID NORTH AS DEFINED BY THE CENTRAL MERIDIAN OF THE NEVADA COORDINATE REFERENCE SYSTEM, LAS VEGAS ZONE, NORTH AMERICAN DATUM OF 1983; SAID MERIDIAN BEING COINCIDENT WITH 114°58' WEST OF THE GREENWICH MERIDIAN. THE REFERENCE FRAME BEING NAD 83 (CORS96) EPOCH 2002.0.

TRANSVERSE MERCATOR PROJECTION  
 STANDARD PARALLEL & GRID ORIGIN: 36°15'00"N  
 CENTRAL MERIDIAN: 114°58'00"W  
 FALSE NORTHING: 200,000m  
 FALSE EASTING: 656,166.6667 FEET(US)  
 100,000m  
 328,083.3333 FEET(US)  
 1.0001 (EXACT)

**BENCHMARK**  
 CITY OF LAS VEGAS BENCHMARK  
 2LV01 28W6  
 RIVET AND PLATE IN CONCRETE STREET LIGHT BASE IN ISLAND ON NORTH SIDE OF WASHINGTON AT COMSTOCK.  
 ELEVATION = 628.350m (NAVD'88) CLV 2008 ADJUSTMENT  
 = 2061.51ft (NAVD'88) CLV 2008 ADJUSTMENT

REFER TO DRAWING HC1 & HC2 FOR PROJECT HORIZONTAL CONTROL

00 REFER TO DRAWING HC1 FOR FOUND POINTS



POINT TABLE				
NO.	NORTHING	EASTING	STATION	DESCRIPTION
P1	631153.7038	265140.0565	14+84.11	AP
P2	631155.8329	265160.1115	15+04.28	AP
P3	631148.6448	265468.7596	18+13.01	AP
P4	631144.8513	265502.9337	18+47.40	AP
P5	631116.9820	266702.3398	30+47.13	AP
P6	631097.9701	266767.2411	31+14.75	AP
P7	631076.4460	267696.2871	40+44.05	AP
P8	631062.0743	269019.0782	53+66.92	AP
P9	631054.7981	269093.0614	54+41.26	AP
P10	631050.4285	269498.8511	58+47.07	PC
P11	631053.5570	269524.7682	58+73.25	PT
P12	631061.8927	269557.2733	59+06.81	PC
P13	631065.0212	269583.1904	59+32.99	PT
P14	631049.1456	271057.6968	74+07.58	EP
P15	631856.5440	266759.1981	18+00.00	EP
P16	631151.4700	266750.2038	10+94.87	AP
P17	631113.3349	266765.4330	10+53.81	AP
P18	631104.8033	266779.4499	10+37.40	AP
P19	631068.2064	268086.4823	13+61.73	AP
P20	631056.3191	268065.3664	13+37.50	AP
P21	631009.0203	268058.8524	12+89.75	AP
P22	630881.9742	268060.2574	11+62.70	AP
P23	630843.4079	268099.6863	11+07.54	AP
P24	630826.2651	268099.8759	10+90.40	EP

LINE TABLE		
NO.	DIRECTION	LENGTH
L1	N83°56'23"E	20.17'
L2	S88°39'57"E	308.73'
L3	S83°39'57"E	34.38'
L4	S88°40'08"E	1199.73'
L5	S73°40'22"E	67.63'
L6	S88°40'22"E	929.30'
L7	S89°22'39"E	1322.87'
L8	S84°22'59"E	74.34'
L9	S89°22'59"E	405.81'
L10	N75°37'01"E	33.56'
L11	S89°22'59"E	1474.59'
L12	N58°40'22"W	16.41'
L13	N21°46'09"W	41.06'
L14	N00°43'51"E	705.13'
L15	N60°37'21"E	24.23'
L16	N07°50'29"E	47.75'
L17	N00°38'01"W	127.05'
L18	N45°38'01"W	55.15'
L19	N00°38'01"W	17.14'

CURVE TABLE				
NO.	RADIUS	DELTA	LENGTH	TANGENT
C1	100.00'	15°00'00"	26.18'	13.17'
C2	100.00'	15°00'00"	26.18'	13.17'

DEPARTMENT OF PUBLIC WORKS  
 ENGINEERING DESIGN SECTION

DAVID BOWERS, P.E., P.T.O.E.  
 MARK SORENSEN, P.E.  
 CITY ENGINEER / CITY PROGRAM MANAGER

MATT BAIRD, P.E.  
 CHECK BY: SCR  
 DATE: JUNE 2013

PROJECT MANAGER: SMB  
 DESIGN BY: DUE  
 DRAWN BY: DUE

TITLE: **FREEWAY CHANNEL - WASHINGTON MLK BOULEVARD TO RANCHO DRIVE (WASHINGTON AVE. STORM DRAIN)**

ALIGNMENT CONTROL PLAN

PROFESSIONAL LAND SURVEYOR STATE OF NEVADA  
 ERIC P. CHRISTIANSON  
 Exp. 12-31-12  
 No. 8895

**ATKINS**  
 2270 Corporate Circle Suite 200 Henderson, Nevada 89074  
 Telephone: 702/263-7275  
 Fax: 702/263-7200

SHEET: **HC3**  
 7 of 63  
 DRAWING# **731-90**

NOT FOR CONSTRUCTION 70% SUBMITTAL