

**NEVADA COORDINATE REFERENCE SYSTEM  
BASIS OF BEARING AND DATUM STATEMENT**

GRID NORTH AS DEFINED BY THE CENTRAL MERIDIAN OF THE NEVADA COORDINATE REFERENCE SYSTEM, LAS VEGAS ZONE, NORTH AMERICAN DATUM OF 1983; SAID MERIDIAN BEING COINCIDENT WITH 114°58' WEST OF THE GREENWICH MERIDIAN. THE REFERENCE FRAME BEING NAD 83 (CORS96) EPOCH 2002.0.

**TRANSVERSE MERCATOR PROJECTION**

STANDARD PARALLEL & GRID ORIGIN: 36°15'00"N  
CENTRAL MERIDIAN: 114°58'00"W  
FALSE NORTHING: 200,000m  
FALSE EASTING: 656,166.6667 FEET(US)  
STANDARD PARALLEL SCALE: 1.0001 (EXACT)

**BENCHMARK**

CITY OF LAS VEGAS BENCHMARK  
2LV01 28W6

RIVET AND PLATE IN CONCRETE STREET LIGHT BASE IN ISLAND ON NORTH SIDE OF WASHINGTON AT COMSTOCK.

ELEVATION = 628.350m (NAVD'88) CLV 2008 ADJUSTMENT  
= 2061.51ft (NAVD'88) CLV 2008 ADJUSTMENT

**REFERENCE MAPS**

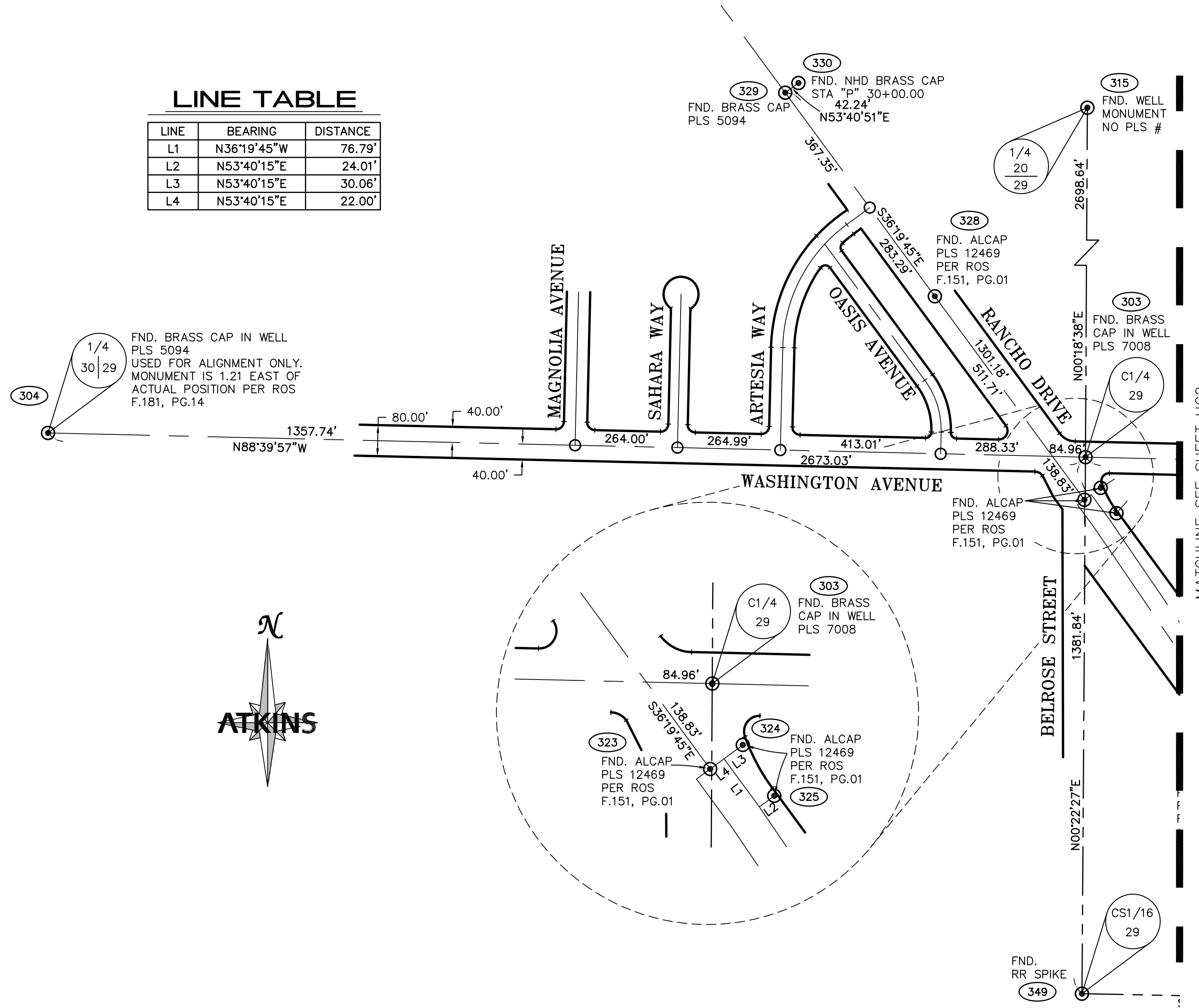
RECORDS OF SURVEY: FILE 62, PAGE 74  
FILE 77, PAGE 58  
FILE 83, PAGE 40  
FILE 98, PAGE 66  
FILE 108, PAGE 66  
FILE 128, PAGE 74  
FILE 142, PAGE 71  
FILE 148, PAGE 79  
FILE 151, PAGE 01  
FILE 172, PAGE 02  
FILE 181, PAGE 14  
FILE 184, PAGE 34  
FILE 186, PAGE 32  
FILE 186, PAGE 64

FINAL MAPS (PLATS): BOOK 02, PAGE 69  
BOOK 04, PAGE 11  
BOOK 05, PAGE 11  
BOOK 07, PAGE 41  
BOOK 61, PAGE 50  
BOOK 105, PAGE 48  
BOOK 108, PAGE 66  
BOOK 110, PAGE 95

HORIZONTAL CONTROL PLANS ARE BASED ON RECORD OF SURVEY AS RECORDED BY ATKINS FILE xxx, PAGE xx.

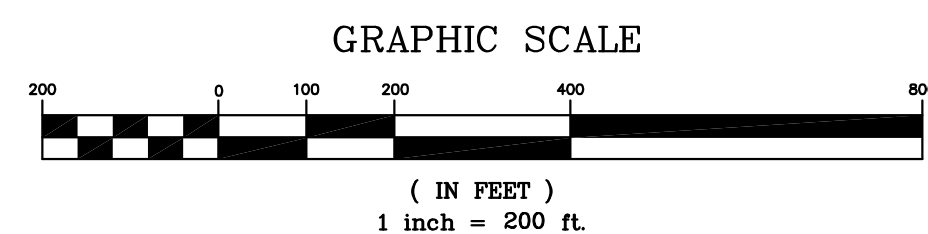
**LINE TABLE**

LINE	BEARING	DISTANCE
L1	N36°19'45"W	76.79'
L2	N53°40'15"E	24.01'
L3	N53°40'15"E	30.06'
L4	N53°40'15"E	22.00'



**COORDINATE TABLE**

POINT NUMBER	NORTHING	EASTING	DESCRIPTION
301	631052.3096	270763.6586	WELLMON-PLS 7635
302	631081.3366	268068.0533	WELLMON-PLS 12469
303	631142.2685	265441.8957	WELLMON-PLS 7008
304	631204.5041	262769.5912	WELLMON-PLS 5094
308	633818.9455	270790.2776	WELLMON-PLS 7635
309	631066.8273	269415.3559	ALCAP-PLS 12469
310	631072.1845	268917.9644	ALCAP-PLS 12469
311	631111.7643	266754.6977	ALCAP-PLS 12469
315	633840.8690	265456.5209	WELLMON-NO PLS
316	633834.0273	268122.4152	WELLMON-NO PLS
317	629710.5597	268083.2128	ALCAP-ILLEG
323	631032.3990	265439.2050	ALCAP-PLS 12469
324	631063.3060	265481.0970	BRCAP-PLS 12469
325	630997.8430	265521.7320	BRCAP-PLS 12469
326	630438.0670	265917.9690	BRCAP-PLS 12469
327	630378.8370	265832.3490	BRCAP-PLS 12469
328	631556.4920	265053.8089	ALCAP-PLS 12469
329	632080.6780	264668.3750	BRCAP-PLS 5094
330	632105.6990	264702.4130	NHD BRDISC-30+00.00
344	629700.6809	270750.7816	BRCAP-PLS 7635
345	629735.2850	266769.7593	POSITION PER FND REF MONS
349	629760.4610	265432.8726	RR SPIKE



**LEGEND**

- FOUND POINT AS NOTED
- CALCULATED POSITION
- CENTERLINE
- - - ALIQUOT LINE
- (303) COORDINATE POINT NUMBER

**ATKINS**  
2270 Corporate Circle Suite  
89074 Henderson, Nevada  
702/263-7275  
Fax: 702/263-7200

**DEPARTMENT OF PUBLIC WORKS  
ENGINEERING DESIGN SECTION**

CITY ENGINEER: DAVID BOWERS, P.E., P.T.O.E.  
CITY PROGRAM MANAGER: MARK SORENSEN, P.E.  
PROJECT MANAGER: MATT BAIRD, P.E.  
DESIGN BY: SMB  
DRAWN BY: DUE  
CHECK BY: SCR  
DATE: JUNE 2013

**FREEWAY CHANNEL - WASHINGTON  
MLK BOULEVARD TO RANCHO DRIVE  
(WASHINGTON AVE. STORM DRAIN)**

**HORIZONTAL CONTROL PLAN 1**

PROFESSIONAL LAND SURVEYOR STATE OF NEVADA  
ERIC P. CHRISTIANSON  
Exp 12-31-12  
No. 8895

SHEET:  
**HC1**  
5 of 63  
DRAWING#  
**731-90**

X:\Projects\100022151\_WashAve\_Sheets\22151-1-HC1\_#6-05-13\_01:44pm