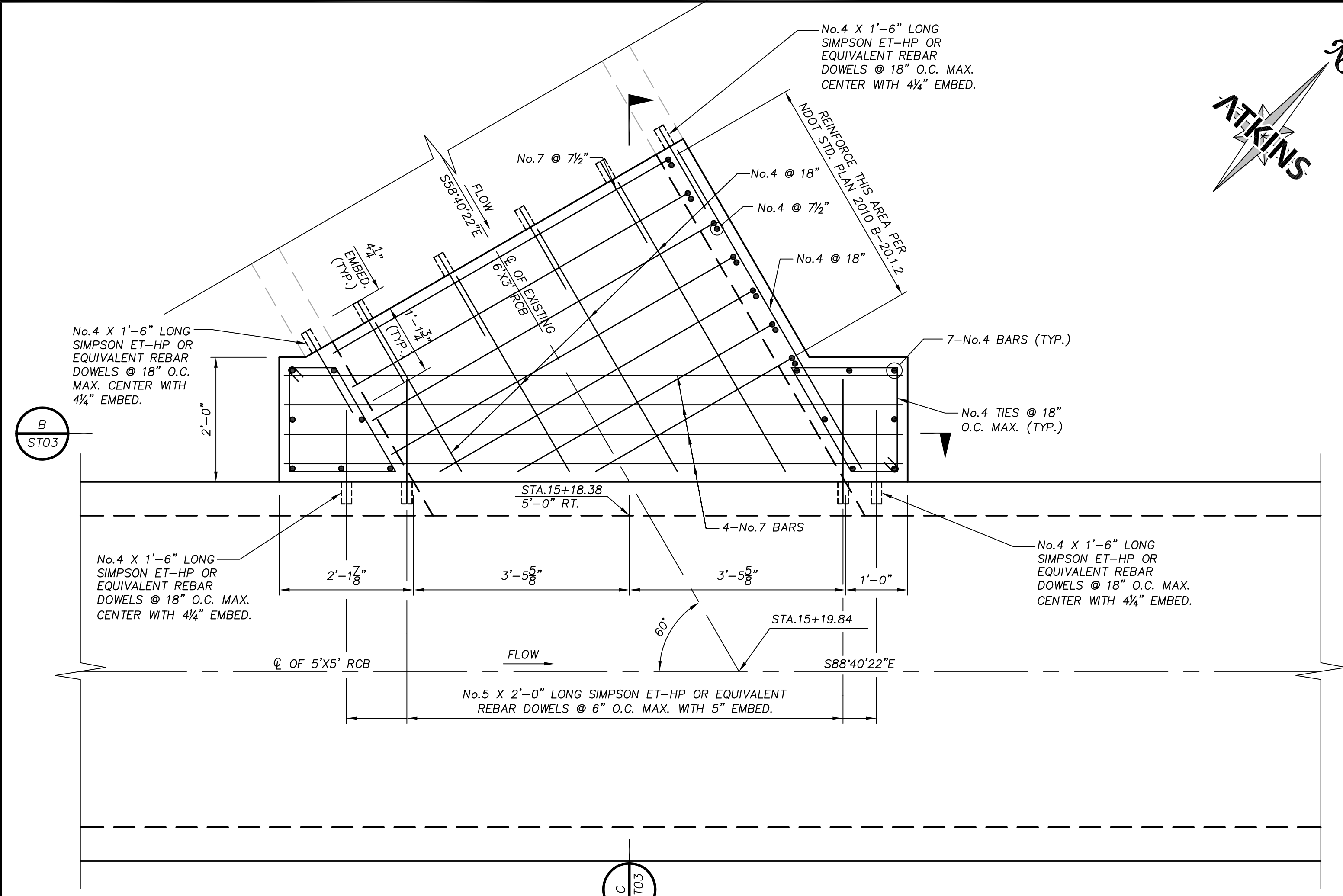
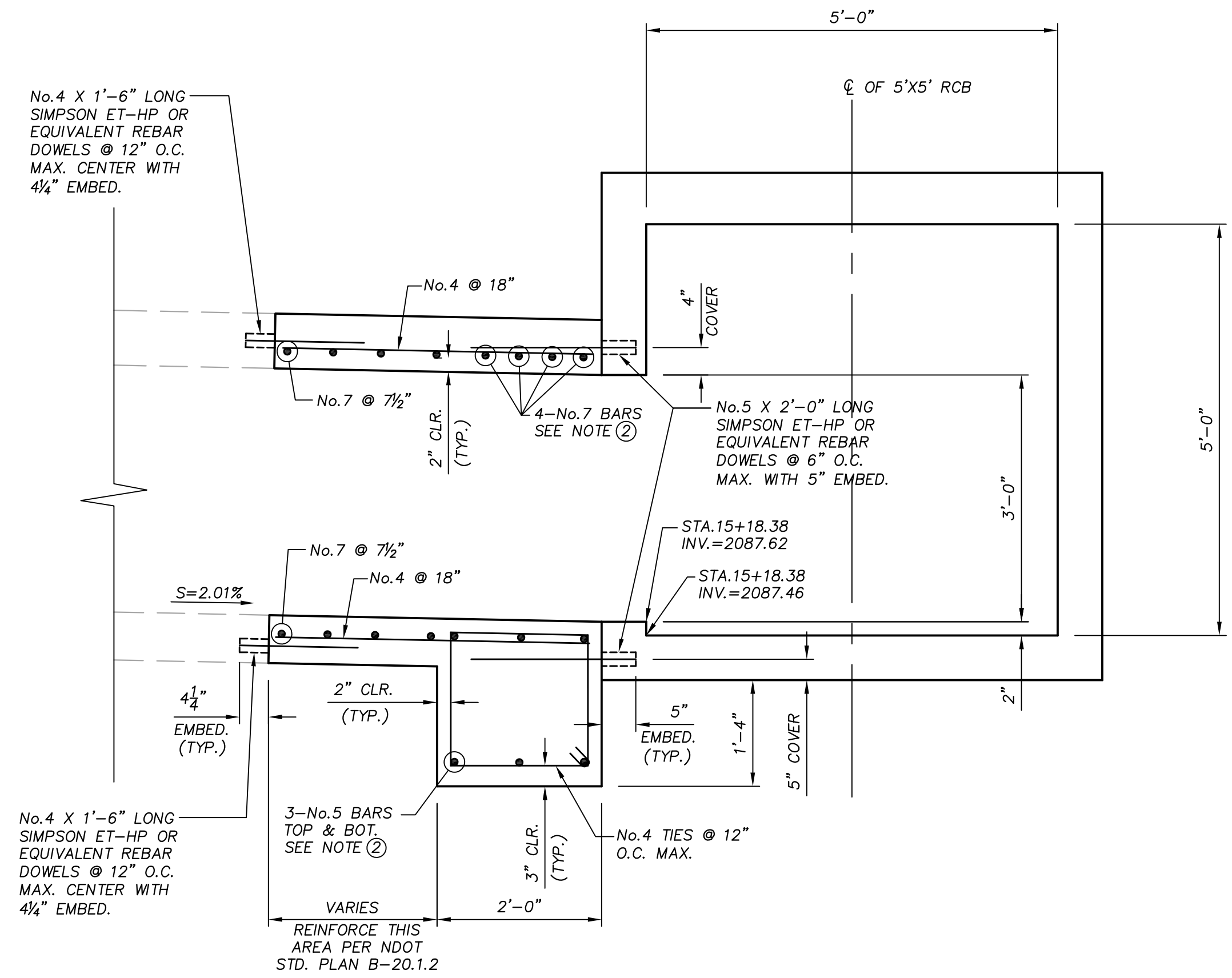


X:\Projects\10022151_WashAve_Sheets\22151-06-ST03 *6-06-13 10.44am

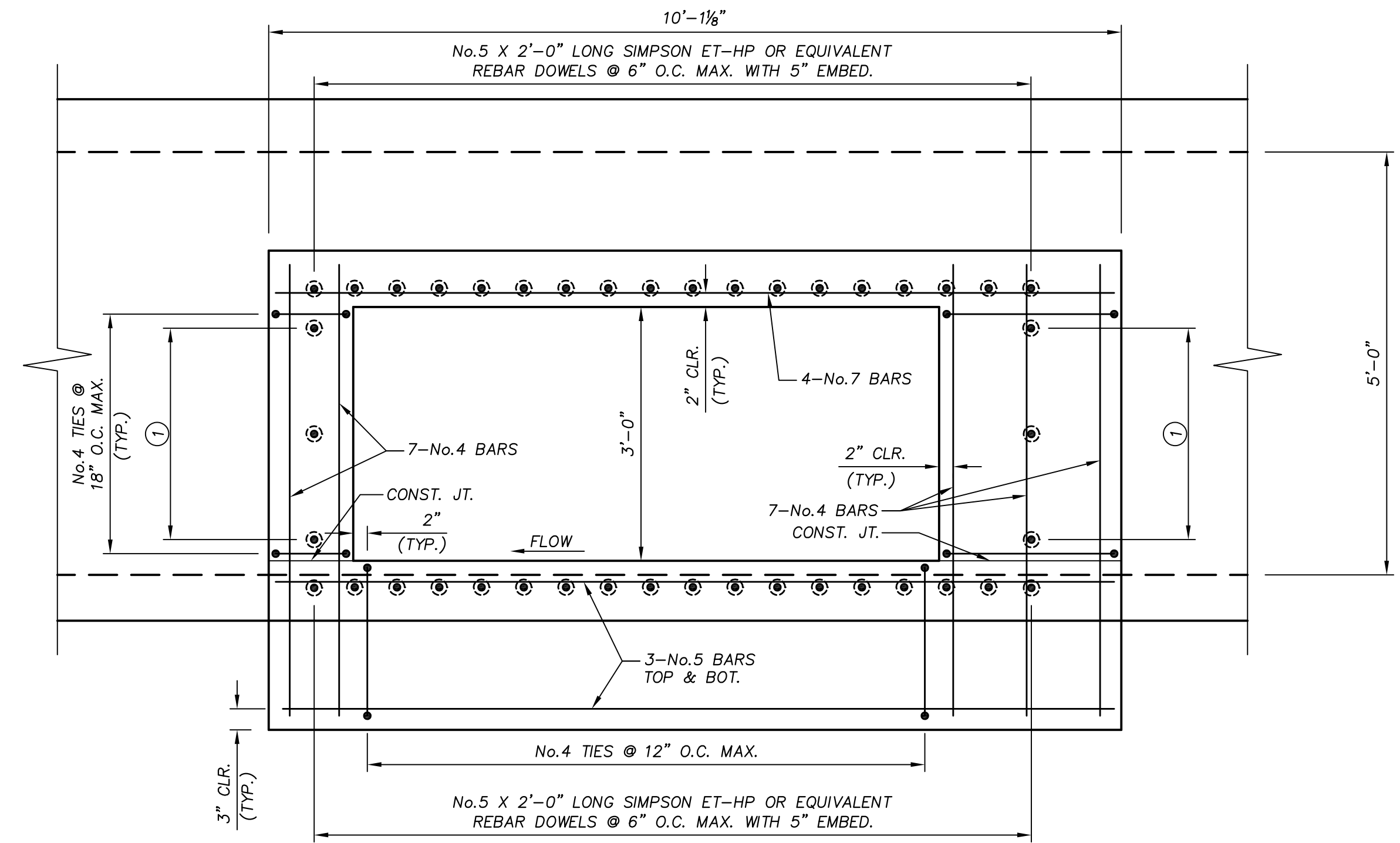


PLAN
SCALE: 3/4" = 1'-0"



SECTION
SCALE: 3/4" = 1'-0"

- NOTES:**
- ① No. 4 X 1'-6" LONG SIMPSON ET-HP OR EQUIVALENT REBAR DOWELS @ 18" O.C. MAX. CENTER WITH 4 1/4" EMBED. (TYP.)
 - ② REINFORCEMENT IS PARALLEL TO ϕ OF 5'X5' RCB.



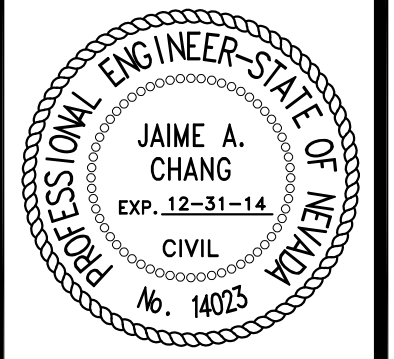
SECTION
SCALE: 3/4" = 1'-0"

DEPARTMENT OF PUBLIC WORKS
ENGINEERING DESIGN SECTION

CITY ENGINEER: DAVID BOWERS, P.E., P.T.O.E.
CITY PROGRAM MANAGER: MARK SORENSEN, P.E.
PROJECT MANAGER: MATT BAIRD, P.E.
DESIGN BY: J.L.
CHECK BY: JAC
DRAWN BY: D.J.E.
DATE: JUNE 2013

TITLE: FREEWAY CHANNEL - WASHINGTON MLK BOULEVARD TO RANCHO DRIVE (WASHINGTON AVE. STORM DRAIN)

SHEET: 6'X3' RCB TO 5'X5' RCB CONNECTION DETAIL STA. 15+19.84



SHEET: ST03
63 of 63
DRAWING# 731-90

ATKINS
2270 Corporate Circle Suite 200 Henderson, Nevada 89074 Telephone: 702/263-7275 Fax: 702/263-7200

NOT FOR CONSTRUCTION 70% SUBMITTAL