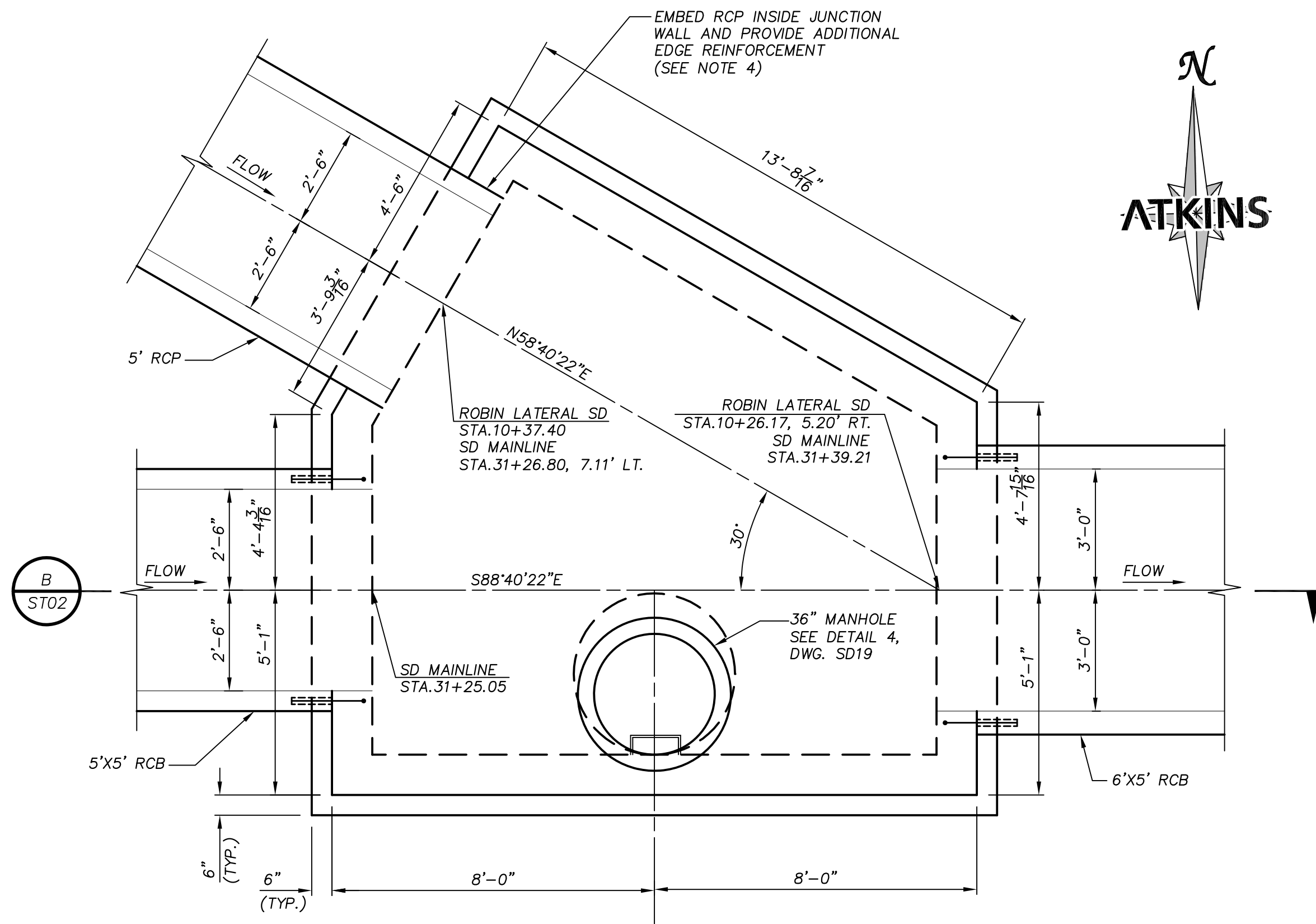
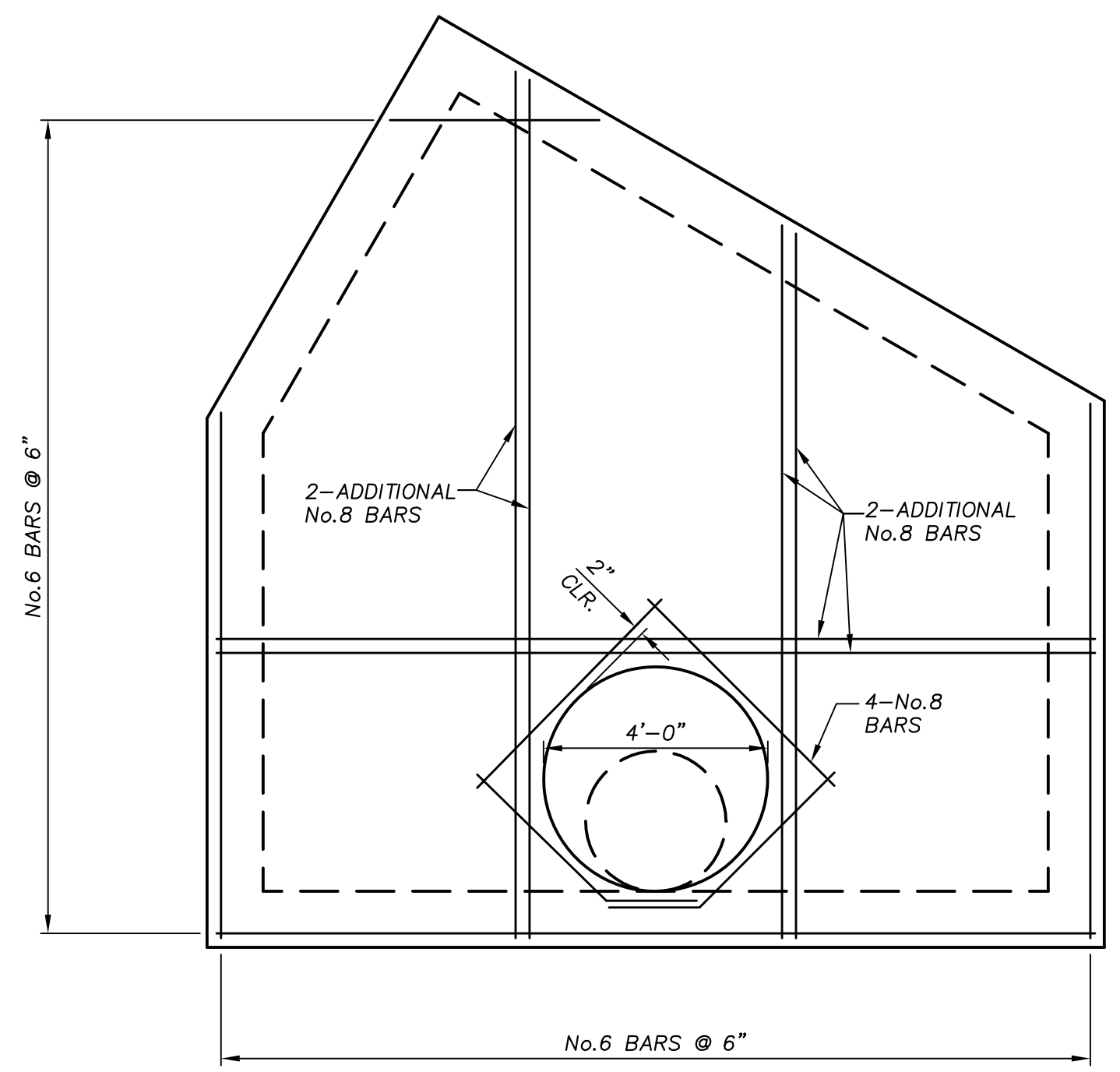


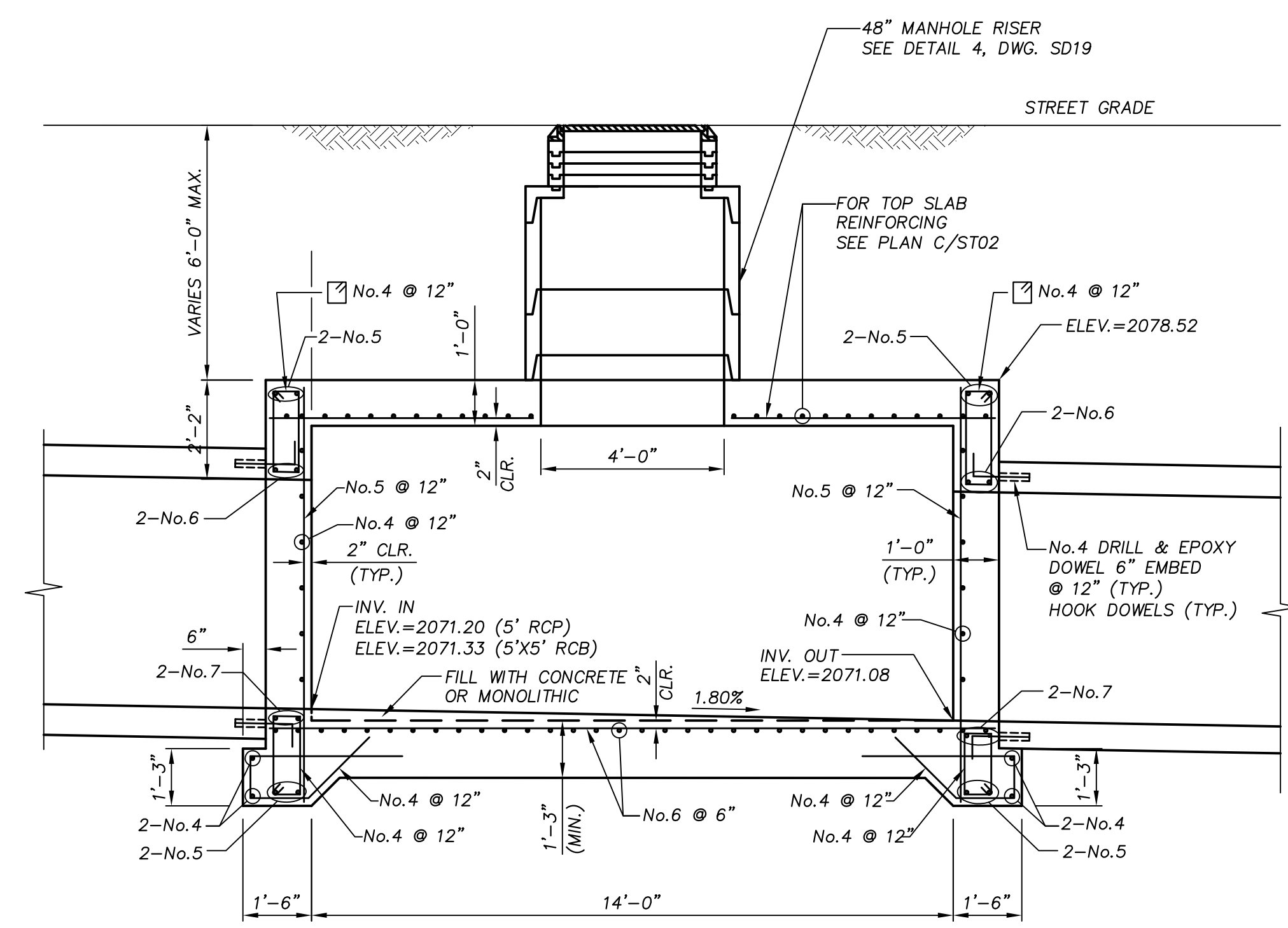
X:\Projects\100022151_WashAve_Sheets\22151-06-ST02 *6-06-13 10:44am



PLAN
SCALE: 3/8" = 1'-0"
A
ST02



PLAN
SCALE: 3/8" = 1'-0"
C
ST02



SECTION
SCALE: 3/8" = 1'-0"
B
ST02

- NOTES:**
- LIDS, GRADE RINGS, BASES, AND STEPS SHALL CONFORM TO CLARK COUNTY STANDARDS.
 - MANHOLE COVER SHALL BEAR ENTITY IDENTIFICATION AND SYSTEM FUNCTION (IF APPLICABLE).
 - SHAPE FLOWLINE IN MANHOLE TO OUTLET PIPE, AND PROVIDE A 10:1 SLOPE FROM ALL DIRECTIONS TOWARD FLOW LINE.
 - FOR PIPE PENETRATION SEE DETAIL C ON SHEET ST01.

ATKINS
2270 Corporate Circle Suite
200 Henderson, Nevada
89074 Telephone:
702/263-7275
Fax: 702/263-7200

**DEPARTMENT OF PUBLIC WORKS
ENGINEERING DESIGN SECTION**

CITY ENGINEER: DAVID BOWERS, P.E., P.T.O.E.
CITY PROGRAM MANAGER: MARK SORENSEN, P.E.
PROJECT MANAGER: J.L.
DESIGN BY: MATT BAIRD, P.E.
CHECK BY: JAC
DRAWN BY: D.J.E.
DATE: JUNE 2013

**TITLE: FREEWAY CHANNEL - WASHINGTON
MLK BOULEVARD TO RANCHO DRIVE
(WASHINGTON AVE. STORM DRAIN)**

**ROBIN STREET
JUNCTION STRUCTURE
STA. 31+39.21**

PROFESSIONAL ENGINEER-STATE OF NEVADA
JAIME A. CHANG
EXP. 12-31-14
CIVIL
No. 14025

SHEET:
ST02
#2 of 63
DRAWING#
731-90