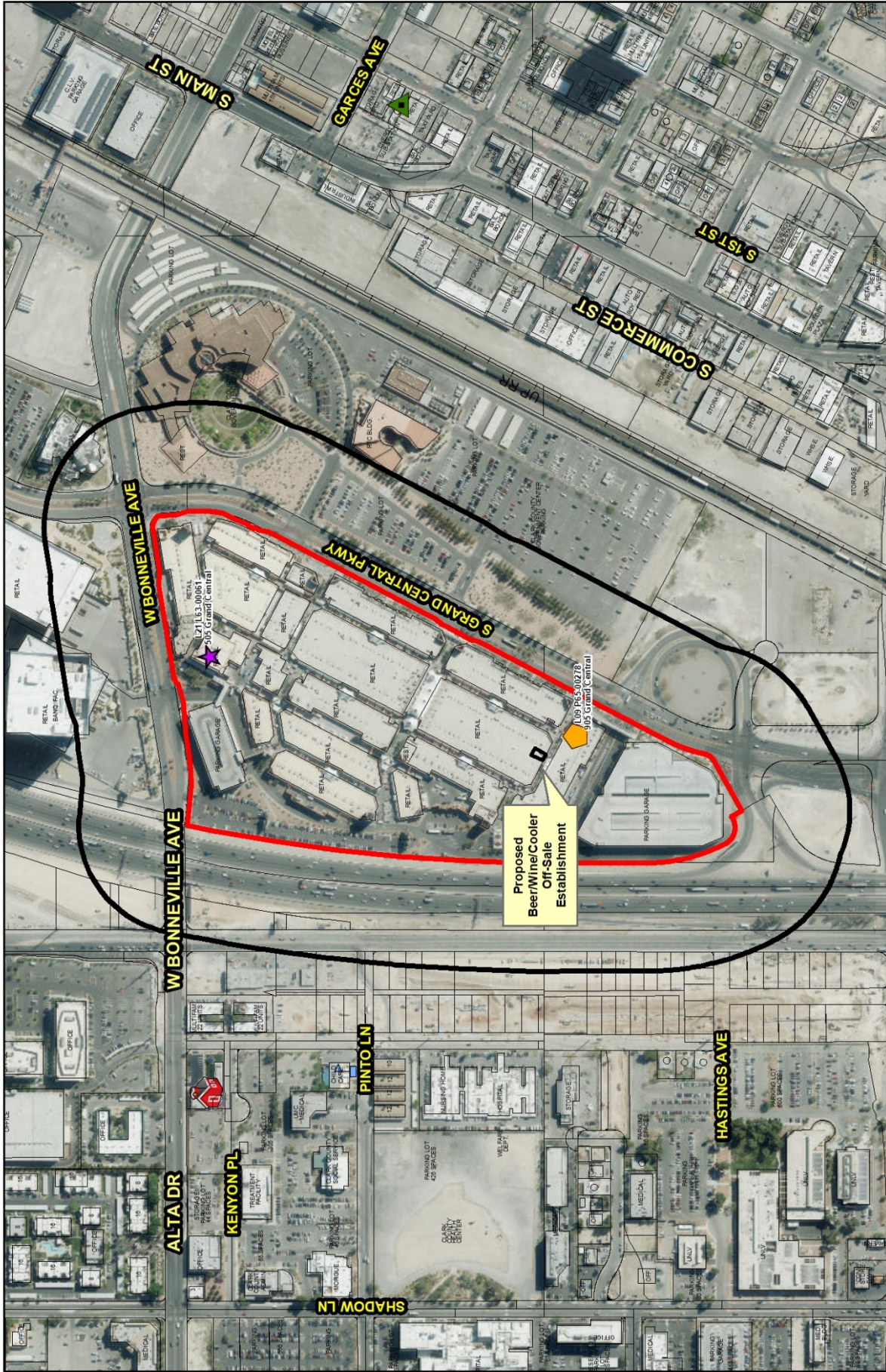


CASE: SUP-74828 [PRJ-74804]

RADIUS: 1500 FEET

ZONING OF SUBJECT PROPERTY: PD (PLANNED DEVELOPMENT)





**SUP-74828
(PRJ-74804)**
**Beer/Wine/Cooler
Off-Sale**

- Business Licenses**
- Beer/Wine/Cooler On-Sale
 - Beer/Wine/Cooler Off-Sale
 - Beer/Wine/Cooler On- and Off-Sale
 - Restaurant With Alcohol/ Restaurant Service Bar
 - Accessory Package Liquor Off-Sale / Grocery Store With Alcohol
 - Package Liquor Off-Sale
 - Urban Lounge
 - Tavern - Limited
 - Tavern

- Protected Uses**
- RELIGIOUS
 - CITY PARKS
 - SCHOOLS
 - Child Care/ Children Facility
 - Private Schools
 - LIQUOR ESTABLISHMENT (TAVERN)
 - PACKAGE LIQUOR OFF-SALE ESTABLISHMENT

- Entitlements**
- LIQUOR ESTABLISHMENT (TAVERN)
 - TAVERNS

- Subject Property**
- 400 foot buffer

GIS maps are normally produced only to meet the needs of the City. Due to continuous development activity, the City cannot guarantee that the information on this map is current. GIS maps are produced by the City of Salt Lake City, Planning & Development Dept. 702-225-6301

Date: Monday, October 29, 2018