

# City of Las Vegas Motor Fuel Revenue Indexing Projects



# **What is the Fuel Revenue Index (FRI)?**

- **Tying the fuel tax to the rate of inflation**
- **Authorized under AB 413 in 2013**
- **Index over the next three years**
- **Three-cent per gallon per year starting January 1, 2014**

# What will FRI Do?

- **Generate approximately \$700 million over the three years**
- **Fund regional and locally significant transportation improvements**
- **183 projects total throughout the metropolitan area**

# Type of Projects in the City

1. Rehabilitation of existing roads.
2. Traffic and pedestrian safety improvements.
3. Complete streets.

**Over 50 projects valued at approximately  
\$108 million**

# Roadway Reconstruction and Pavement Overlay Projects

14 Projects valued at \$22 million to be completed over the next three years



# **Roadway Reconstruction and Pavement Overlay Projects**

## **Year 1:**

- 1. Decatur Blvd – US 95 to Lake Mead**
- 2. Eastern Ave – Sahara to Cedar Ave**
- 3. Lake Mead – Rainbow to Rancho &  
Hills Center to Rock Springs**

# **Roadway Reconstruction and Pavement Overlay Projects (cont.)**

## **Year 2:**

- 1. Smoke Ranch – Rainbow to Jones**
- 2. Alta Dr. – Rainbow to Rancho**
- 3. Valley View – US 95 to Washington**
- 4. Washington – Decatur to Rancho**

# **Roadway Reconstruction and Pavement Overlay Projects (cont.)**

**Year 3:**

- 1. Buffalo – Sky Pointe to Grand Teton**
- 2. Cimarron Rd. – Sky Pointe to Grand Teton**
- 3. Elkhorn – US 95 to Tenaya**
- 4. Town center – Charleston to Summerlin  
Parkway**

# Traffic and Pedestrian Safety Improvements

1. Four traffic signals
2. Fourteen pedestrian flashers/signals
3. Intersection crosswalk streetlight upgrade at 150 signalized intersections



# Traffic and Pedestrian Safety Improvements (cont.)

**4. Twelve school crosswalk curb extensions (2 per Ward)**



**5. Five Bus Turnouts on Charleston – Boulder Hwy to Nellis Blvd**



# Complete Streets

1. **Main/Commerce Couplet**
2. **Downtown Streetscape Improvements (6<sup>th</sup> St., Coolidge Ave., Carson Ave., Gass Ave.)**
3. **Cultural Vista Connector – Veterans Memorial to Maryland**



# Complete Streets (cont.)

**4. Las Vegas Boulevard –  
Stewart to Charleston**



**5. Charleston – Main Ave.  
to Fremont Street**

**6. Medical District  
Streetscape and  
Pedestrian  
Improvements**

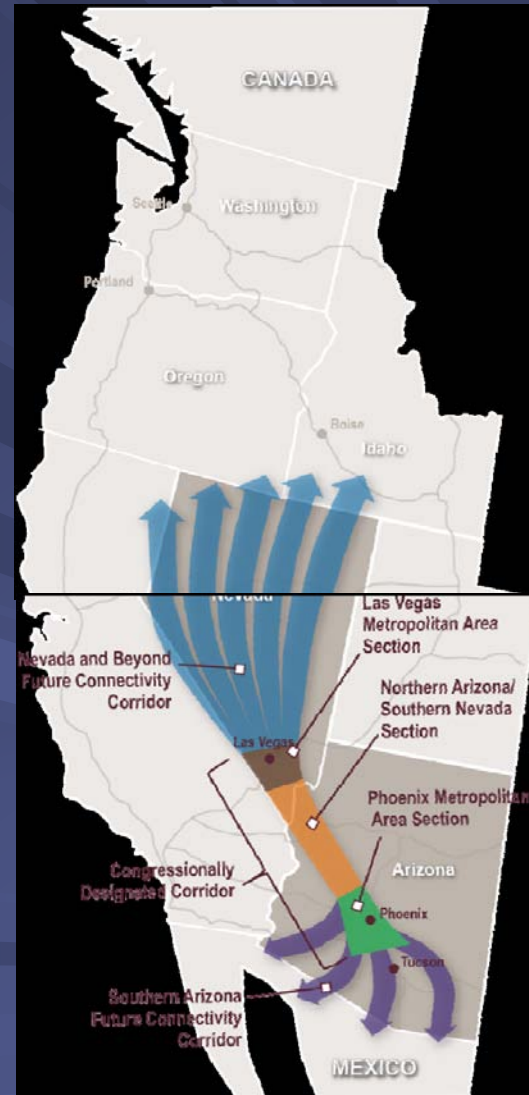


# **FRI Benefits**

- **Allow for the preservation of existing roadway assets**
- **Improve the safety and quality of life for multi-modes of transportation**
- **Create over 9,000 direct and induced jobs**

# Interstate 11 Study

Intermountain West corridor connecting the Phoenix Metropolitan area with the Las Vegas Metropolitan area with an interstate system, and to provide for the movement of goods and commerce between Mexico, USA and Canada.



# I-11 Alignment Alternatives

## Alternative Y

### Opportunities:

- Utilizes mostly existing corridors
- Low preliminary cost estimate

### Constraints:

- Much of corridor is inconsistent for commercial traffic because of adjacent residential land use
- Cannot accommodate multiple transportation modes
- Long-term operational impacts of adding traffic through a densely populated area



# I-11 Alignment Alternatives

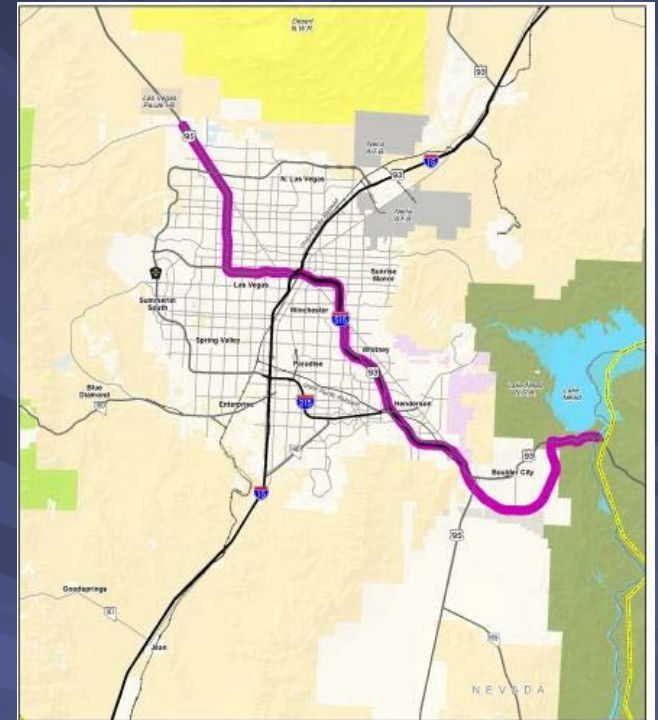
## Alternative Z

### Opportunities:

- Utilizes mostly existing corridors

### Constraints:

- Multiple constraints associated with adding traffic through a densely populated urban core
- Incompatibility with existing build out of land
- Highest total vehicle hours of delay; poor travel speeds due to congestion
- Highest estimated total cost



# I-11 Alignment Alternatives

## Alternative AA

### Opportunities:

- Utilizes existing corridors
- Connects three major freight hubs: APEX, Speedway and North Las Vegas

### Constraints:

- Multiple constraints associated with adding traffic through a densely populated urban core
- Capacity limitations getting traffic through Spaghetti Bowl
- Much of corridor is inconsistent for commercial traffic because of adjacent residential land use



# I-11 Alignment Alternatives

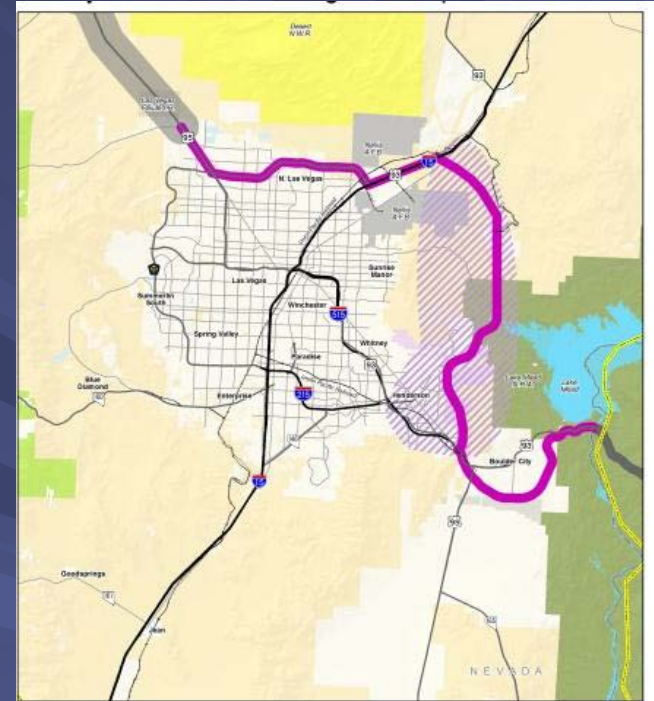
## Alternative BB-QQ

### Opportunities:

- Less community impact by bypassing heavily congested and developed metropolitan area
- Provides a more direct route from Phoenix to major industrial and logistics facilities in Las Vegas
- Provides the eastern corridor previously planned as a truck/bypass in the RTC 2035 Regional Transportation Plan

### Constraints:

- Impacts to some environmentally sensitive areas
- Higher construction cost than utilizing existing corridors



# I-11 Alignment Alternatives

## Alternative BB-QQ

Under the Level 2 Analysis, Alternative BB-QQ was determined to be the recommended reasonable and feasible alignment through the Las Vegas Metropolitan Area.

This alignment will be further evaluated through future NEPA planning studies.



# Questions?

