

EXHIBIT "A"

DEER SPRINGS WAY

POINT OF COMMENCEMENT

A.P. NO. 125-24-701-040
 PARCEL 1
 FILE 112, PAGE 93
 OF PARCEL MAPS



SCALE: 1" = 100'

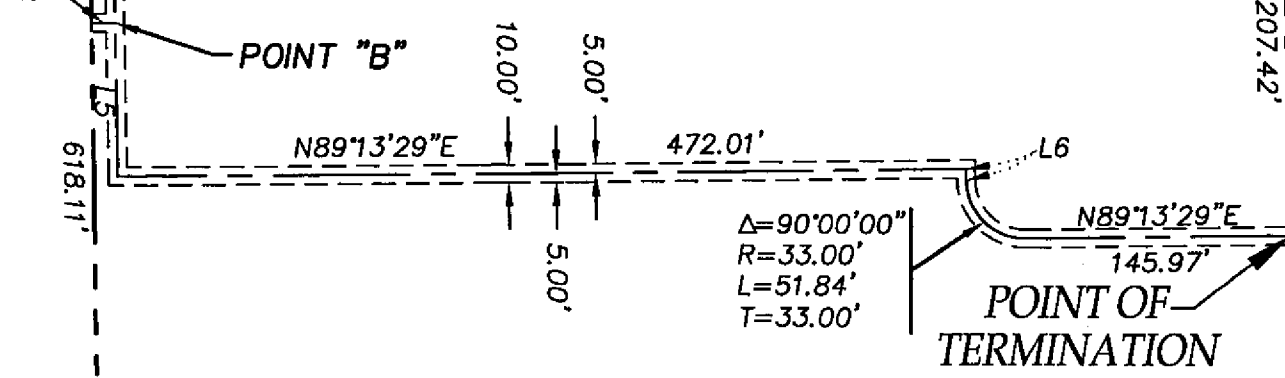
LINE TABLE		
COURSE	BEARING	LENGTH
L1	S31°12'45"E	25.67'
L2	S00°46'51"E	10.10'
L3	S89°13'09"W	13.00'
L4	S00°46'51"E	49.42'
L5	S00°46'51"E	85.00'
L6	S00°46'31"E	6.33'

DECATUR BOULEVARD

POINT OF BEGINNING

POINT "A"

POINT "B"



$\Delta = 90^{\circ}00'00''$
 $R = 33.00'$
 $L = 51.84'$
 $T = 33.00'$

POINT OF TERMINATION