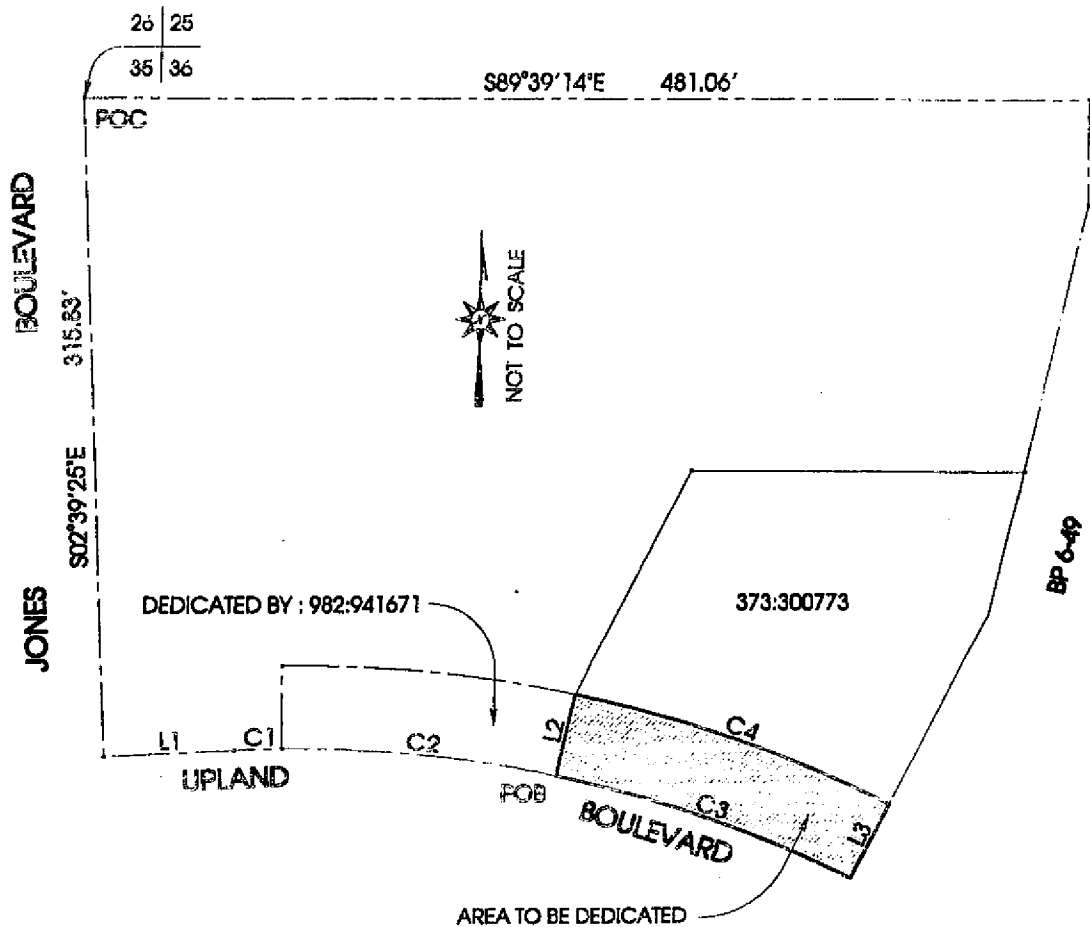


PORTION OF THE NW 1/4 NW 1/4 SEC 36,  
T20S, R60E, M.D.M.



LINE	BEARING	DISTANCE
L1	N87°20'35"E	62.55'
L2	N12°15'28"E (R)	40.00'
L3	S26°40'28"W (R)	40.00'

CURVE	DELTA	RADIUS	ARC LENGTH
C1	2°08'52"	600.00'	22.49'
C2	12°46'01"	600.00'	133.70'
C3	14°25'00"	600.00'	150.97'
C4	14°25'00"	640.00'	161.04'