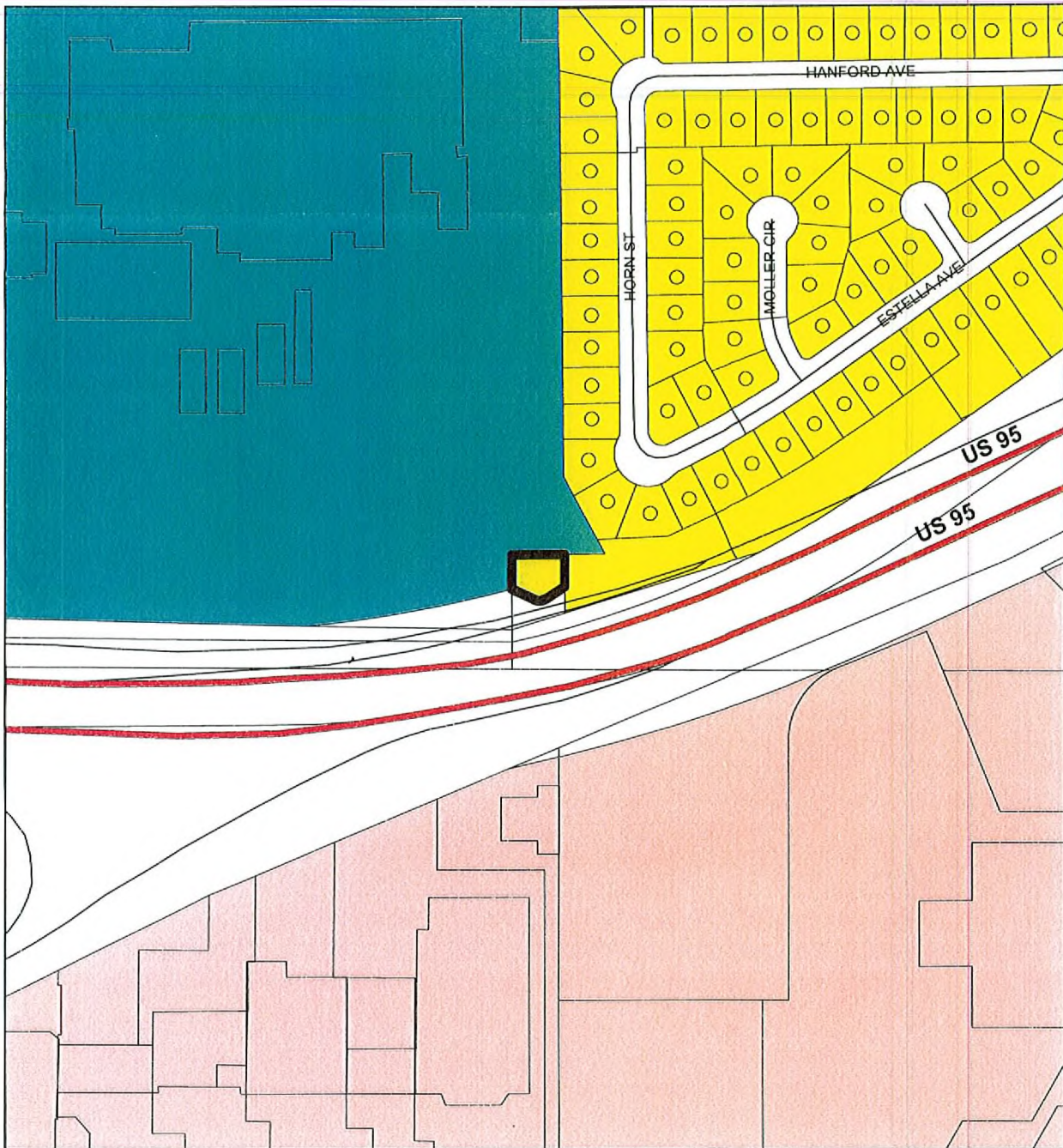


General Plan Designation - APN: 139-30-401-003



- | | | |
|---------------------------------|--------------------------------|--------------------------------|
| Rural Neighborhood Preservation | Office | Public Facility |
| Rural Estates | Service Commercial | Public Facility - School |
| Desert Rural | General Commercial | Public Facility - Clark County |
| Rural | Tourist Commercial | Town Center |
| Low | Las Vegas Medical District | Resource Conservation |
| Medium - Low | Light Industrial / Research | Downtown - Commercial |
| Medium - Low Attached | Planned Community Development | Downtown - Mixed Use |
| Medium | Downtown Redevelopment Area | Not in City |
| High | Park / Recreation / Open Space | Right - of - Way |



GIS maps are normally produced only to meet the needs of the City. Due to continuous development activity, the map is for reference only. Geographic Information System Planning & Development Dept. 702-229-6307 Printed: October 14, 2008



RECEIVED

NOV 21 2008 GPA-32108
01/22/09 PC