

CASE: MOD-30617

RADIUS: 1000 FT

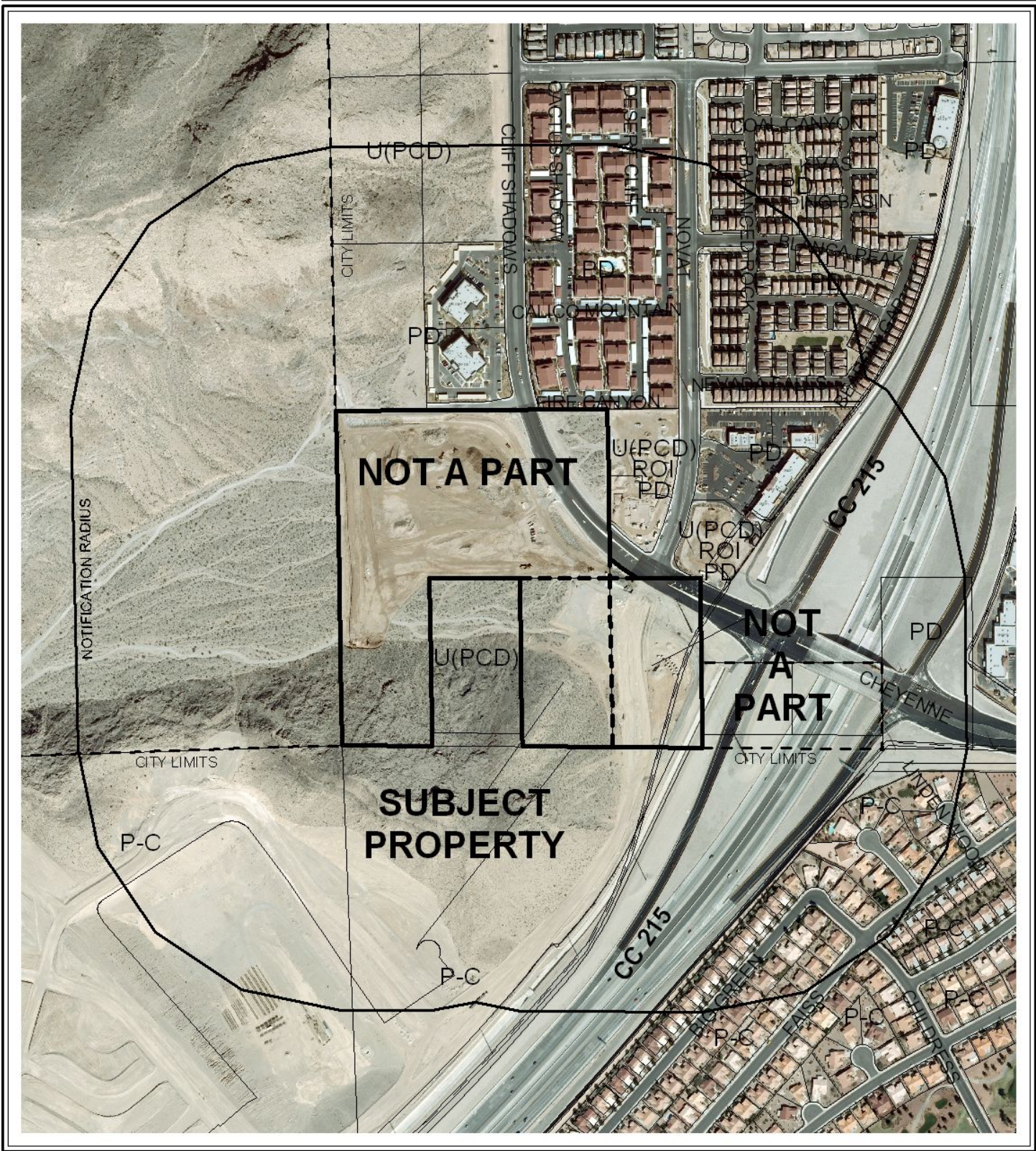
ZONING OF SUBJECT PROPERTY:

PD (PLANNED DEVELOPMENT) ZONE [L (LOW DENSITY RESIDENTIAL) LONE MOUNTAIN WEST LAND USE DESIGNATION] ; U (UNDEVELOPED) ZONE [PCD (PLANNED COMMUNITY DEVELOPMENT) GENERAL PLAN DESIGNATION] ; P (PARK/SCHOOL/RECREATION/ OPEN SPACE) LONE MOUNTAIN WEST LAND USE DESIGNATION] AND C-V (CIVIC) ZONE

PROPOSED ZONING OF SUBJECT PROPERTY:

PD (PLANNED DEVELOPMENT) ZONE [PF (PUBLIC FACILITIES) LONE MOUNTAIN WEST LAND USE DESIGNATION]





CASE: MOD-30617

RADIUS: 1000 FT

ZONING OF SUBJECT PROPERTY:

PD (PLANNED DEVELOPMENT) ZONE [L (LOW DENSITY RESIDENTIAL) AND P (PARK/SCHOOL/ RECREATION/OPEN SPACE)] LONE MOUNTAIN WEST LAND USE DESIGNATION

PROPOSED ZONING OF SUBJECT PROPERTY:

PD (PLANNED DEVELOPMENT) ZONE [PF (PUBLIC FACILITIES)] LONE MOUNTAIN WEST

