

CASE: SUP-32530

RADIUS: 1000 FT

ZONING OF SUBJECT PROPERTY: M (INDUSTRIAL)



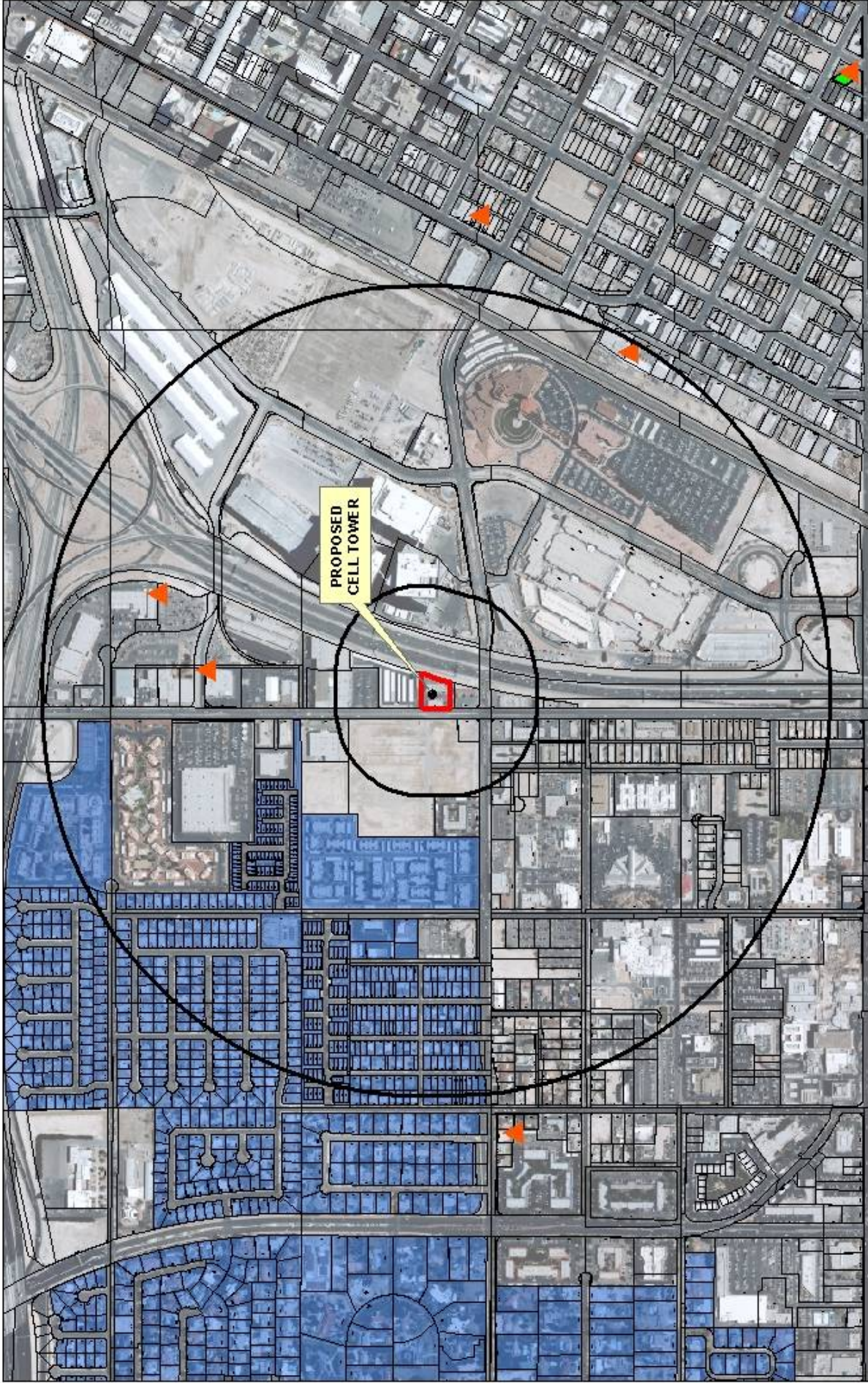


CASE: SUP-32530

RADIUS: 1000 FT



ZONING OF SUBJECT PROPERTY: M (INDUSTRIAL)








**SUP-32530**

**Cell Tower Locations**

-  Non-Stealth
-  Stealth

-  Subject Cell Tower
-  Residential Property
-  600ft & 1/2 mile Buffer

