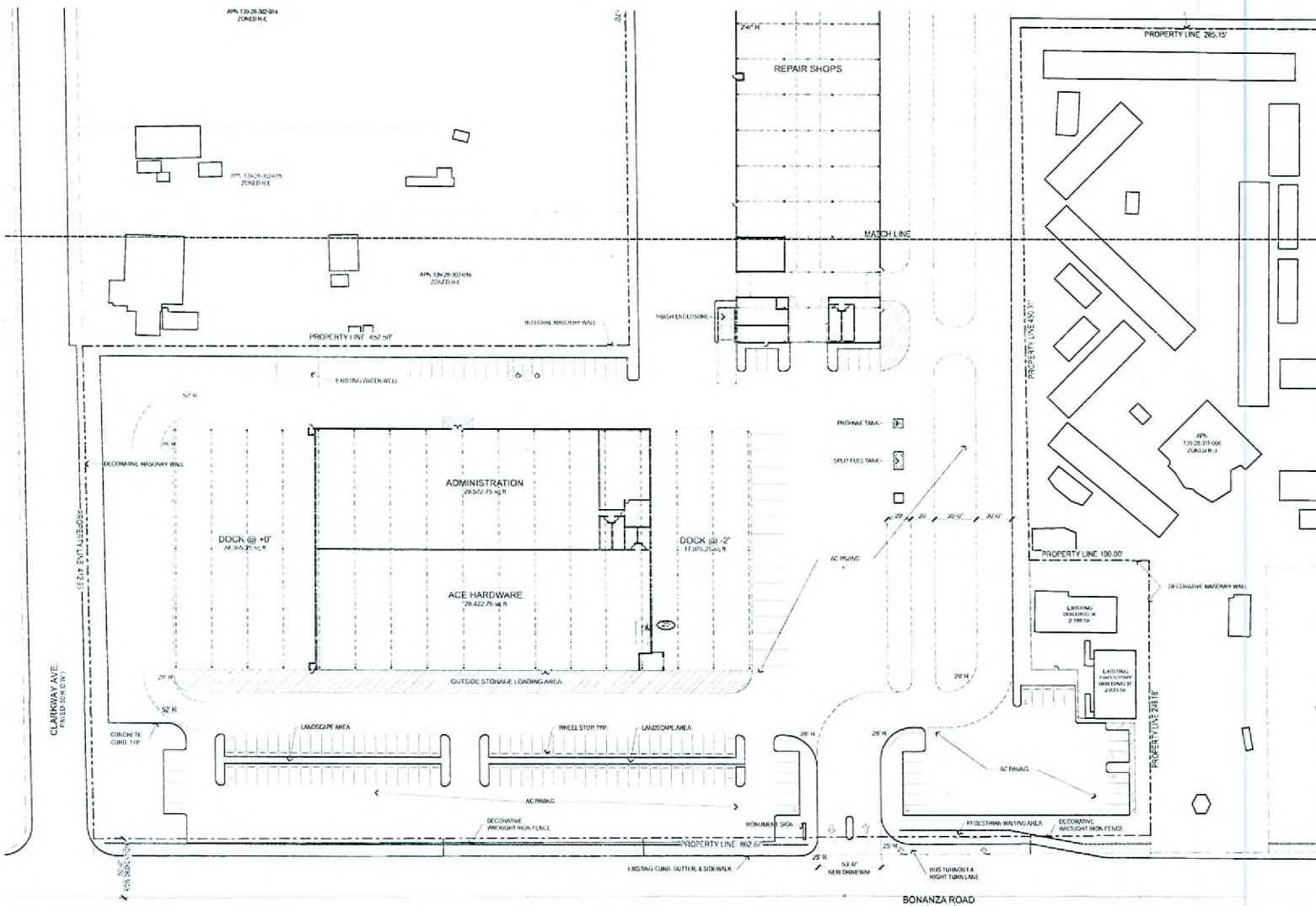


RECEIVED
SEP 16 2008



SITE ZONING & DATA

SITE DATA

PARCEL NUMBERS
 139-28-802-01-1E
 139-28-802-03-1E
 139-28-802-04-1E
 139-28-802-05-1E
 139-28-802-06-1E
 139-28-802-07-1E
 139-28-802-08-1E
 139-28-802-09-1E
 139-28-802-10-1E
 139-28-802-11-1E
 139-28-802-12-1E
 139-28-802-13-1E
 139-28-802-14-1E
 139-28-802-15-1E

JURISDICTION
 1. APPLICABLE ZONING
 2. PROPOSED ZONING

SITE AREA
 80,100 SQ FT
 18.02 ACRES

SETBACKS - (BUILDING) (VARIANCE REQUESTED)

FRONT	REAR	PROVIDED
20'-0"	10'-0"	50'-0" 12', 15'-0"
SIDE STREET	10'-0"	10'-0"
REAR	10'-0"	10'-0"

SETBACKS - (PARKING) (VARIANCE REQUESTED)

FRONT	REAR	PROVIDED
10'-0"	10'-0"	10'-0"
SIDE STREET	10'-0"	10'-0"
REAR	10'-0"	10'-0"

MAX HEIGHT & STORES
 13' 0" MAX HEIGHT
 1 STORY MAX STORES

LOT COVERAGE ALLOWED
 ACTUAL LOT COVERAGE
BUILDING AREA
 48,730 SF
 17,600 SF
 6,250 SF

PARKING CALCULATIONS

TOTAL PARKING REQUIRED	ACT. PROVISION
28,700 @ 17% = 4,879	17,600
17,600 @ 17% = 2,992	17,600
4,879 @ 17% = 829	17,600
2,992 @ 17% = 509	17,600
829 @ 17% = 141	17,600
509 @ 17% = 86	17,600
141 @ 17% = 24	17,600
86 @ 17% = 15	17,600
24 @ 17% = 4	17,600
4 @ 17% = 1	17,600
TOTAL PARKING PROVIDED	17,600

ENLARGED SITE PLAN
SOUTH HALF
1" = 40'

Ahern Ace - Bonanza
Site Development Review
1800 Bonanza Road
Las Vegas, Nevada 89106

City of Las Vegas SDR Schedule 01/24/07

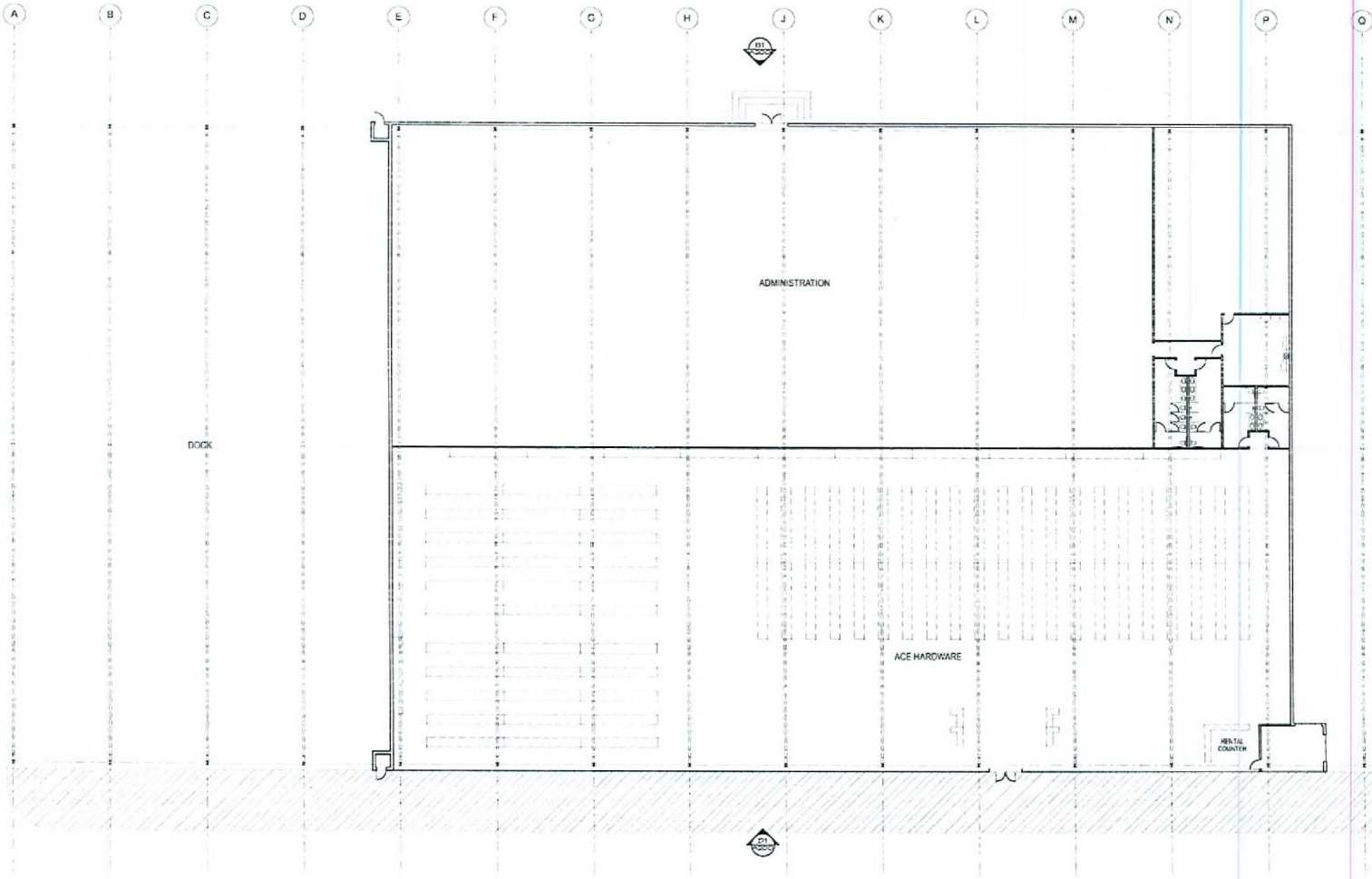
ENLARGED SITE PLAN

APTUS Architecture
1200 South 4th Street
Suite 200
Las Vegas, Nevada 89104
P: 702.833.1200
F: 702.833.1243

EOT-30019
12-03-08 CC

ASI01

06.131 Ahern Ace - Bonanza



RECEIVED

SEP 16 2008



FLOOR PLAN

APTUS Architecture
 1200 South 4th Street
 Suite 200
 Las Vegas, Nevada 89104
 P 702.679.1200
 F 702.679.1213

Ahern Ace - Bonanza
 Site Development Review
 1800 Bonanza Road
 Las Vegas, Nevada 89106

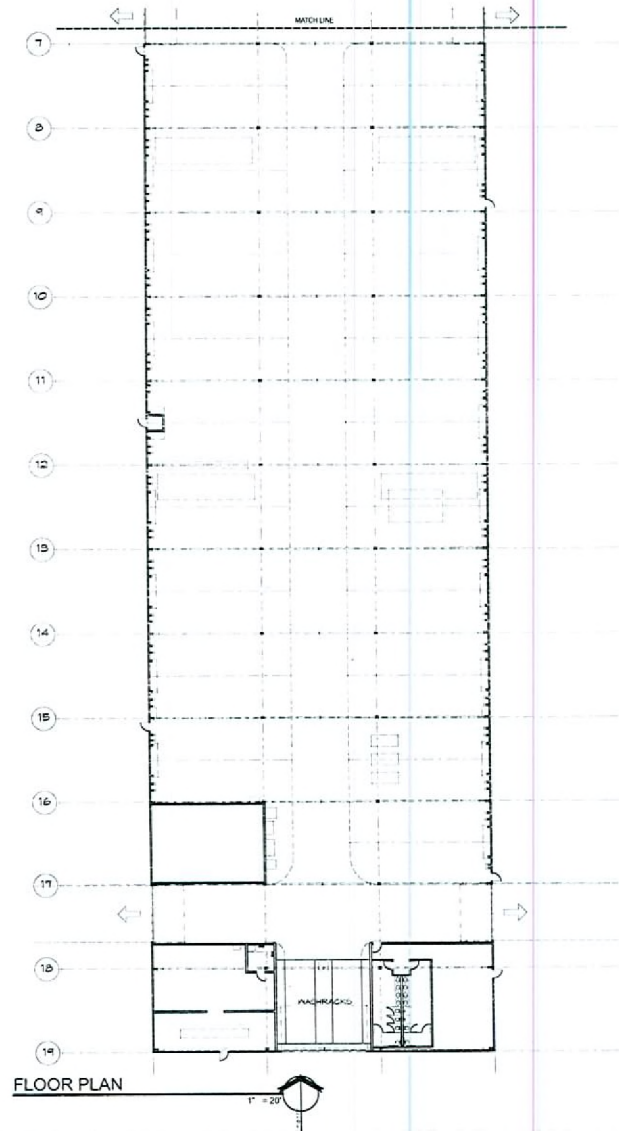
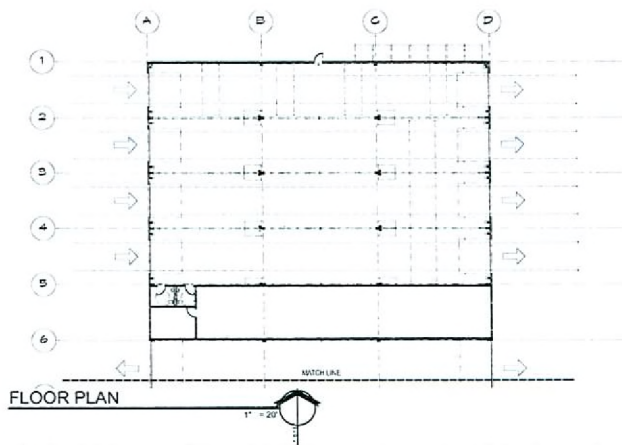
City of Las Vegas SDR Submittal 05.14.07

EOT-30019
 12-03-08 CC

ACE HARDWARE
 FLOOR PLAN

A100

Bl 151 Ahern Ace - Bonanza



RECEIVED

SEP 16 2008