

OVERALL SITE PLAN



RECEIVED

SEP 8 2008

APTUS Architecture
 1300 South Main Street
 Suite 206
 Las Vegas, Nevada 89102
 P 702.879.1200
 F 702.879.1213

Ahern Ace - Bonanza
 Site Development Review
 1800 Bonanza Road
 Las Vegas, Nevada 89106

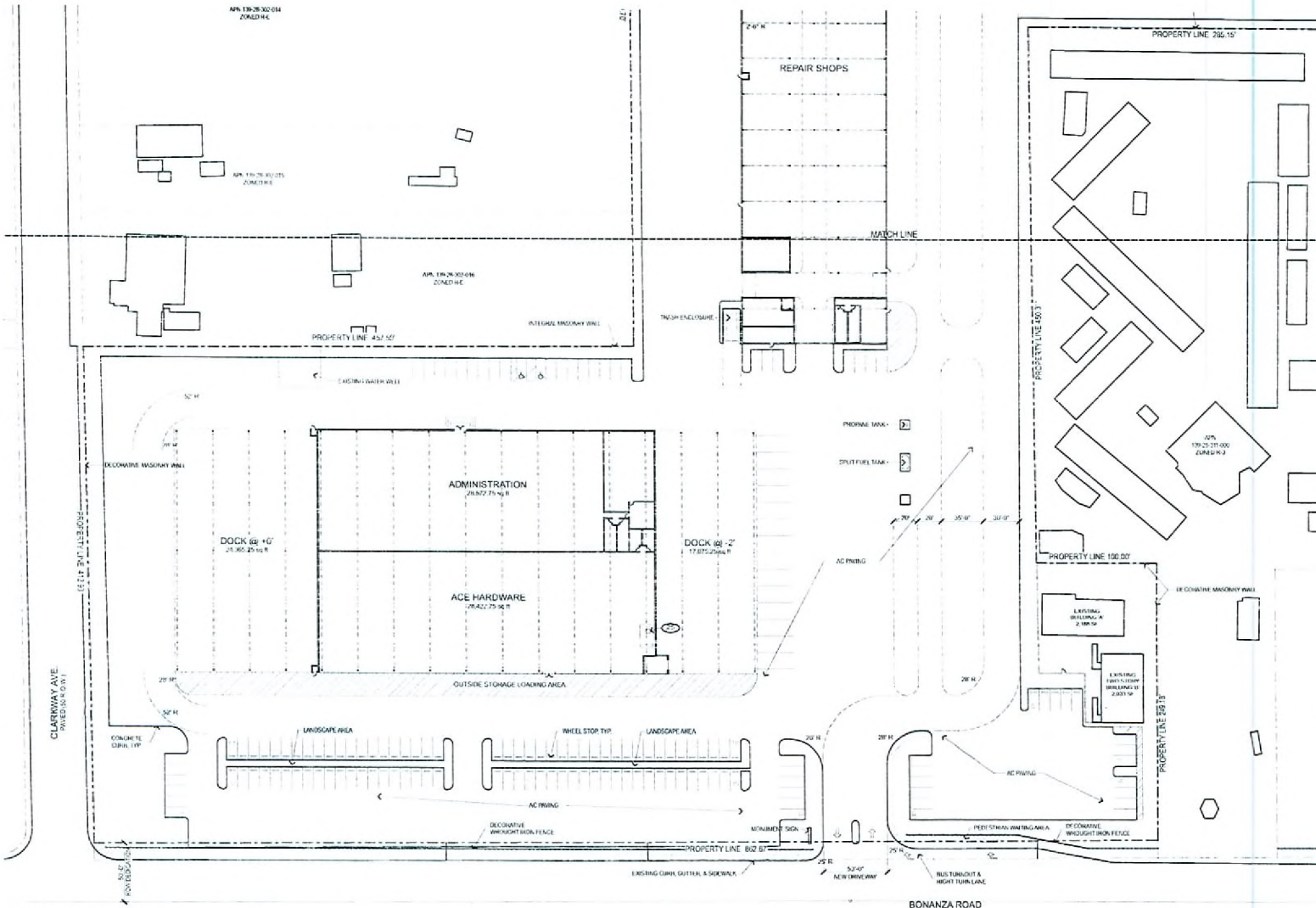
EOT-30020
 12-03-08 CC

City of Las Vegas SDR Submittal 05/24/07

OVERALL SITE PLAN

AS100

06/15/1 Ahern Ace - Bonanza



SITE ZONING & DATA

SITE DATA

PARCEL NUMBERS

JURISDICTION

FUTURE GENERAL PLAN

FUTURE ZONING

PROPOSED CORNER

SITE AREA

SETBACKS - BUILDING (VARIANCE REQUESTED)

HEIGHT

PROVIDED

REQUESTED

MAX HEIGHT & STORES

ACTUAL HEIGHT & STORES

(VARIANCE REQUESTED)

LOT COVERAGE ALLOWED

ACTUAL LOT COVERAGE

BUILDING AREA

ACE HARDWARE

EXISTING BLDG A

EXISTING BLDG B

PARKING CALCULATIONS

TOTAL PARKING REQUIRED

ACE HARDWARE

EXISTING BLDG A

EXISTING BLDG B

REPAIR SHOPS

EXISTING BUILDINGS A & B

1,388 +/-

PARKING REQUIRED

HANDICAPPED PARKING REQUIRED

STANDING PARKING PROVIDED

HANDICAPPED PARKING PROVIDED

TOTAL PARKING PROVIDED

ENLARGED SITE PLAN
SHEET NO. 1

APTUS Architecture
1000 South 4th Street
Suite 200
Las Vegas, Nevada 89101
P: 702.871.1200
F: 702.871.1213

RECEIVED

SEP 16 2008

Ahern Ace - Bonanza
Site Development Review
1800 Bonanza Road
Las Vegas, Nevada 89106

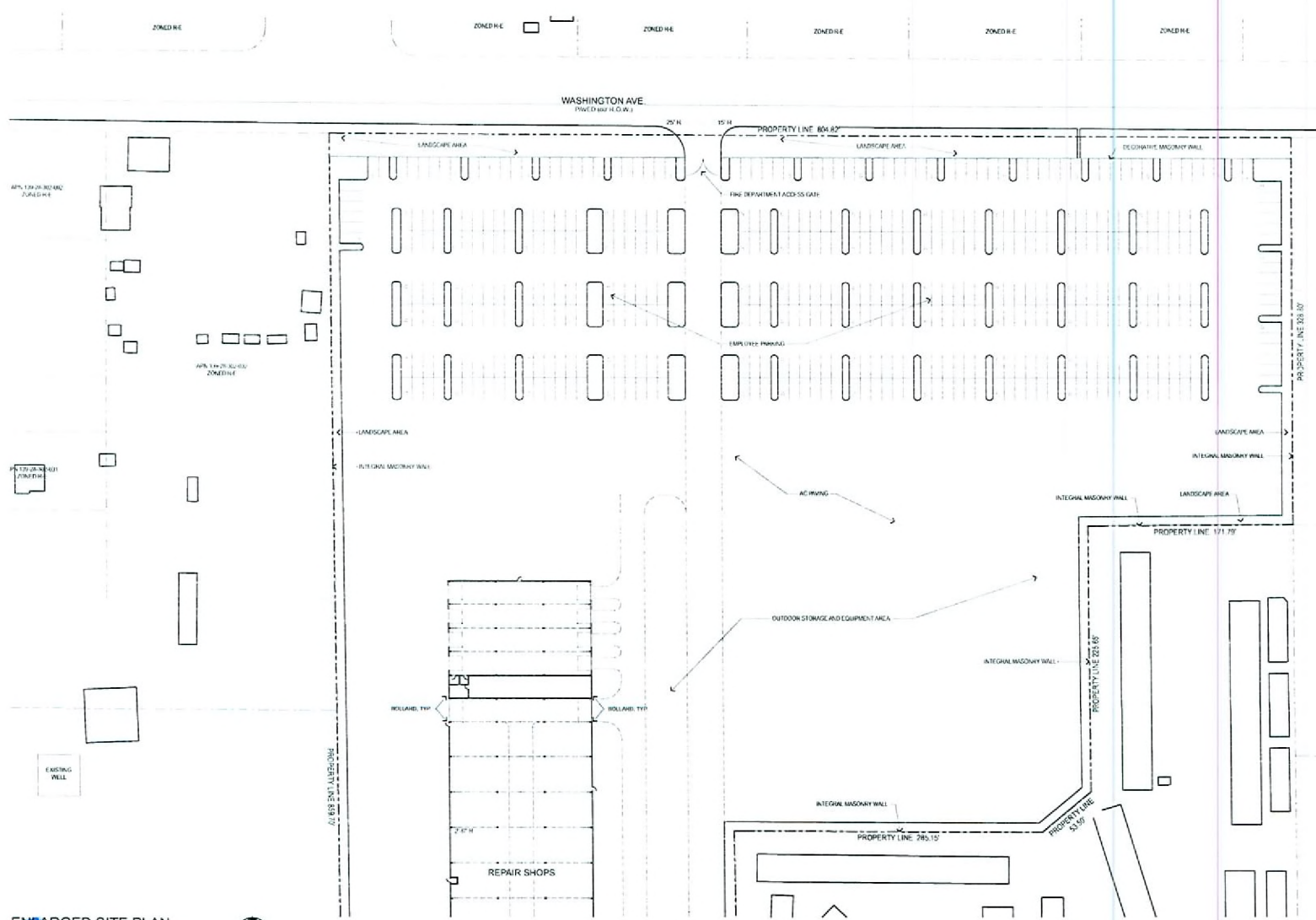
City of Las Vegas, SDR Submittal 05.24.07

ENLARGED SITE PLAN

AS101

06.151 Ahern Ace - Bonanza

EOT-30020
12-03-08 CC



ENLARGED SITE PLAN
 NORTH
 1" = 40'

RECEIVED
 SEP 1 2008
 APTUS Architecture
 1200 South Rainbow Blvd
 Suite 206
 Las Vegas, Nevada 89144
 P 702.879.2200
 F 702.879.1212

Ahern Ace - Bonanza
 Site Development Review
 1800 Bonanza Road
 Las Vegas, Nevada 89106

EOT-30020
 12-03-08 CC

City of Las Vegas SDR Submittal 05/24/07

ENLARGED SITE PLAN
 ASI02
 06/13/ Ahern Ace - Bonanza