

DOOR SCHEDULE

NO.	DESCRIPTION	QTY	UNIT
1	DOOR	1	EA
2	DOOR	1	EA
3	DOOR	1	EA
4	DOOR	1	EA
5	DOOR	1	EA
6	DOOR	1	EA
7	DOOR	1	EA
8	DOOR	1	EA
9	DOOR	1	EA
10	DOOR	1	EA
11	DOOR	1	EA
12	DOOR	1	EA
13	DOOR	1	EA
14	DOOR	1	EA
15	DOOR	1	EA
16	DOOR	1	EA
17	DOOR	1	EA
18	DOOR	1	EA
19	DOOR	1	EA
20	DOOR	1	EA
21	DOOR	1	EA
22	DOOR	1	EA
23	DOOR	1	EA
24	DOOR	1	EA
25	DOOR	1	EA
26	DOOR	1	EA
27	DOOR	1	EA
28	DOOR	1	EA
29	DOOR	1	EA
30	DOOR	1	EA
31	DOOR	1	EA
32	DOOR	1	EA
33	DOOR	1	EA
34	DOOR	1	EA
35	DOOR	1	EA
36	DOOR	1	EA
37	DOOR	1	EA
38	DOOR	1	EA
39	DOOR	1	EA
40	DOOR	1	EA
41	DOOR	1	EA
42	DOOR	1	EA
43	DOOR	1	EA
44	DOOR	1	EA
45	DOOR	1	EA
46	DOOR	1	EA
47	DOOR	1	EA
48	DOOR	1	EA
49	DOOR	1	EA
50	DOOR	1	EA
51	DOOR	1	EA
52	DOOR	1	EA
53	DOOR	1	EA
54	DOOR	1	EA
55	DOOR	1	EA
56	DOOR	1	EA
57	DOOR	1	EA
58	DOOR	1	EA
59	DOOR	1	EA
60	DOOR	1	EA
61	DOOR	1	EA
62	DOOR	1	EA
63	DOOR	1	EA
64	DOOR	1	EA
65	DOOR	1	EA
66	DOOR	1	EA
67	DOOR	1	EA
68	DOOR	1	EA
69	DOOR	1	EA
70	DOOR	1	EA
71	DOOR	1	EA
72	DOOR	1	EA
73	DOOR	1	EA
74	DOOR	1	EA
75	DOOR	1	EA
76	DOOR	1	EA
77	DOOR	1	EA
78	DOOR	1	EA
79	DOOR	1	EA
80	DOOR	1	EA
81	DOOR	1	EA
82	DOOR	1	EA
83	DOOR	1	EA
84	DOOR	1	EA
85	DOOR	1	EA
86	DOOR	1	EA
87	DOOR	1	EA
88	DOOR	1	EA
89	DOOR	1	EA
90	DOOR	1	EA
91	DOOR	1	EA
92	DOOR	1	EA
93	DOOR	1	EA
94	DOOR	1	EA
95	DOOR	1	EA
96	DOOR	1	EA
97	DOOR	1	EA
98	DOOR	1	EA
99	DOOR	1	EA
100	DOOR	1	EA

KEYNOTES

1. SEE ARCHITECT'S SPECIFICATIONS FOR MATERIALS AND FINISHES.

2. SEE ARCHITECT'S SPECIFICATIONS FOR LIGHTING FIXTURES.

3. SEE ARCHITECT'S SPECIFICATIONS FOR FLOORING.

4. SEE ARCHITECT'S SPECIFICATIONS FOR WALLS AND CEILING.

5. SEE ARCHITECT'S SPECIFICATIONS FOR DOORS AND WINDOWS.

6. SEE ARCHITECT'S SPECIFICATIONS FOR MECHANICAL SYSTEMS.

7. SEE ARCHITECT'S SPECIFICATIONS FOR ELECTRICAL SYSTEMS.

8. SEE ARCHITECT'S SPECIFICATIONS FOR PAVING AND CURBS.

9. SEE ARCHITECT'S SPECIFICATIONS FOR SIGNAGE.

10. SEE ARCHITECT'S SPECIFICATIONS FOR SECURITY SYSTEMS.

11. SEE ARCHITECT'S SPECIFICATIONS FOR SPECIALTY GLASS.

12. SEE ARCHITECT'S SPECIFICATIONS FOR ACCESSIBILITY.

13. SEE ARCHITECT'S SPECIFICATIONS FOR SUSTAINABLE DESIGN.

14. SEE ARCHITECT'S SPECIFICATIONS FOR HISTORIC PRESERVATION.

15. SEE ARCHITECT'S SPECIFICATIONS FOR LEAD PENCIL "GALV" 1/2" LINE AND WEIGHT COMPUTER.

WALL LEGEND

1. SEE ARCHITECT'S SPECIFICATIONS FOR WALLS AND CEILING.

2. SEE ARCHITECT'S SPECIFICATIONS FOR LIGHTING FIXTURES.

3. SEE ARCHITECT'S SPECIFICATIONS FOR FLOORING.

4. SEE ARCHITECT'S SPECIFICATIONS FOR WALLS AND CEILING.

5. SEE ARCHITECT'S SPECIFICATIONS FOR DOORS AND WINDOWS.

6. SEE ARCHITECT'S SPECIFICATIONS FOR MECHANICAL SYSTEMS.

7. SEE ARCHITECT'S SPECIFICATIONS FOR ELECTRICAL SYSTEMS.

8. SEE ARCHITECT'S SPECIFICATIONS FOR PAVING AND CURBS.

9. SEE ARCHITECT'S SPECIFICATIONS FOR SIGNAGE.

10. SEE ARCHITECT'S SPECIFICATIONS FOR SECURITY SYSTEMS.

11. SEE ARCHITECT'S SPECIFICATIONS FOR SPECIALTY GLASS.

12. SEE ARCHITECT'S SPECIFICATIONS FOR ACCESSIBILITY.

13. SEE ARCHITECT'S SPECIFICATIONS FOR SUSTAINABLE DESIGN.

14. SEE ARCHITECT'S SPECIFICATIONS FOR HISTORIC PRESERVATION.

15. SEE ARCHITECT'S SPECIFICATIONS FOR LEAD PENCIL "GALV" 1/2" LINE AND WEIGHT COMPUTER.

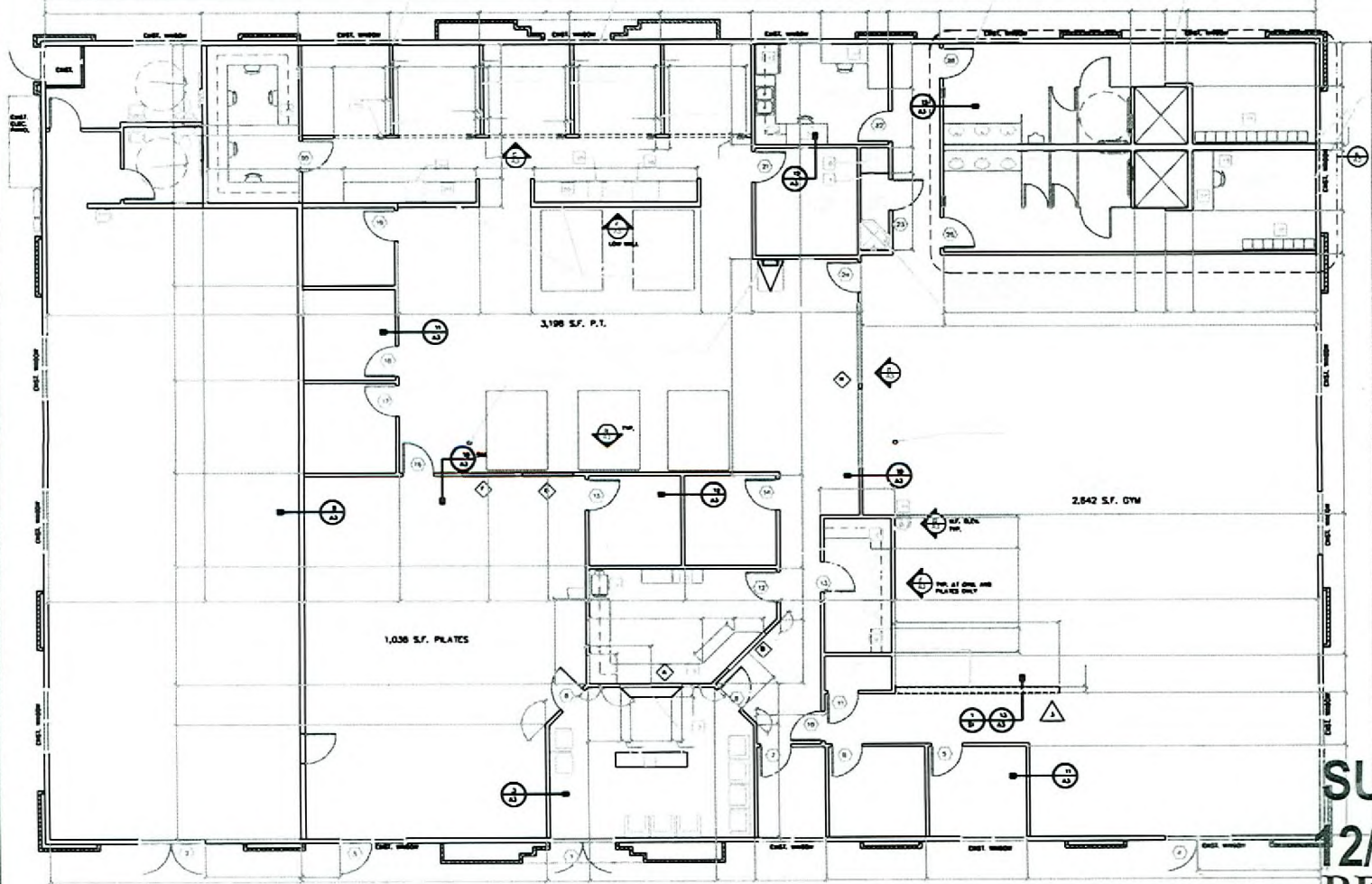
DOOR SCHEDULE

NO.	DESCRIPTION	QTY	UNIT
1	DOOR	1	EA
2	DOOR	1	EA
3	DOOR	1	EA
4	DOOR	1	EA
5	DOOR	1	EA
6	DOOR	1	EA
7	DOOR	1	EA
8	DOOR	1	EA
9	DOOR	1	EA
10	DOOR	1	EA
11	DOOR	1	EA
12	DOOR	1	EA
13	DOOR	1	EA
14	DOOR	1	EA
15	DOOR	1	EA
16	DOOR	1	EA
17	DOOR	1	EA
18	DOOR	1	EA
19	DOOR	1	EA
20	DOOR	1	EA
21	DOOR	1	EA
22	DOOR	1	EA
23	DOOR	1	EA
24	DOOR	1	EA
25	DOOR	1	EA
26	DOOR	1	EA
27	DOOR	1	EA
28	DOOR	1	EA
29	DOOR	1	EA
30	DOOR	1	EA
31	DOOR	1	EA
32	DOOR	1	EA
33	DOOR	1	EA
34	DOOR	1	EA
35	DOOR	1	EA
36	DOOR	1	EA
37	DOOR	1	EA
38	DOOR	1	EA
39	DOOR	1	EA
40	DOOR	1	EA
41	DOOR	1	EA
42	DOOR	1	EA
43	DOOR	1	EA
44	DOOR	1	EA
45	DOOR	1	EA
46	DOOR	1	EA
47	DOOR	1	EA
48	DOOR	1	EA
49	DOOR	1	EA
50	DOOR	1	EA
51	DOOR	1	EA
52	DOOR	1	EA
53	DOOR	1	EA
54	DOOR	1	EA
55	DOOR	1	EA
56	DOOR	1	EA
57	DOOR	1	EA
58	DOOR	1	EA
59	DOOR	1	EA
60	DOOR	1	EA
61	DOOR	1	EA
62	DOOR	1	EA
63	DOOR	1	EA
64	DOOR	1	EA
65	DOOR	1	EA
66	DOOR	1	EA
67	DOOR	1	EA
68	DOOR	1	EA
69	DOOR	1	EA
70	DOOR	1	EA
71	DOOR	1	EA
72	DOOR	1	EA
73	DOOR	1	EA
74	DOOR	1	EA
75	DOOR	1	EA
76	DOOR	1	EA
77	DOOR	1	EA
78	DOOR	1	EA
79	DOOR	1	EA
80	DOOR	1	EA
81	DOOR	1	EA
82	DOOR	1	EA
83	DOOR	1	EA
84	DOOR	1	EA
85	DOOR	1	EA
86	DOOR	1	EA
87	DOOR	1	EA
88	DOOR	1	EA
89	DOOR	1	EA
90	DOOR	1	EA
91	DOOR	1	EA
92	DOOR	1	EA
93	DOOR	1	EA
94	DOOR	1	EA
95	DOOR	1	EA
96	DOOR	1	EA
97	DOOR	1	EA
98	DOOR	1	EA
99	DOOR	1	EA
100	DOOR	1	EA

1. SEE ARCHITECT'S SPECIFICATIONS FOR WALLS AND CEILING.

2. SEE ARCHITECT'S SPECIFICATIONS FOR LIGHTING FIXTURES.

3. SEE ARCHITECT'S SPECIFICATIONS FOR FLOORING.



RECEIVED
NOV 17 2008

SUP-31358
12/04/08 PC
REVISED

Cheyenne West Professional Centre

Parking Calculation
(based on current uses 10/21/08)

Area Summary:

Use	Height	Area
Medical Lease "A"	1-Story	5,000 s.f.
Medical Lease "B"	2-Story	10,000 s.f.
Office Lease "C"	2-Story	10,720 s.f.
Office Lease "D"	2-Story	10,720 s.f.
Office Lease "E"	2-Story	10,720 s.f.
Medical Lease "F"	1-Story	8,000 s.f.
Total		60,160 s.f.

Required Parking:

Medical Office	2,000 s.f.	1/200	10 p.s.
Medical Office	26,000 s.f.	1/175	149 p.s.
Office	32,160 s.f.	1/300	107 p.s.
Total			266 p.s.

Provided Parking: 267 p.s.

RECEIVED
NOV 17 2008

SUP-31358
12/04/08 PC
REVISED