

DOG DAYCARE

Las Vegas, NV

SMALL DOG/PUPPY RM.

DOUBLE-DECKERS
ON RAISED FLOOR
(14) 3'W X 4'L X 6'-10"H
W/ SIDE TRANSFER DOORS-EVERY OTHER

MEDIUM DOG RM.

SINGLE KENNELS
ON RAISED FLOOR
(8) 3'W X 4'L X 6'-10"H
(5) 3'W X 6'L X 6'-10"H

LARGE DOG RM.

SINGLE KENNELS
ON RAISED FLOOR
(15) 3'W X 6'L X 6'-10"H
(3) 4'W X 6'L X 6'-10"H

NOTES:

- VERIFY ALL KENNEL RUN LOCATIONS.
- VERIFY FLOW DIRECTIONS & DRAIN LOCATIONS.
- LAYOUT SHOWING (59) OPENINGS TOTAL

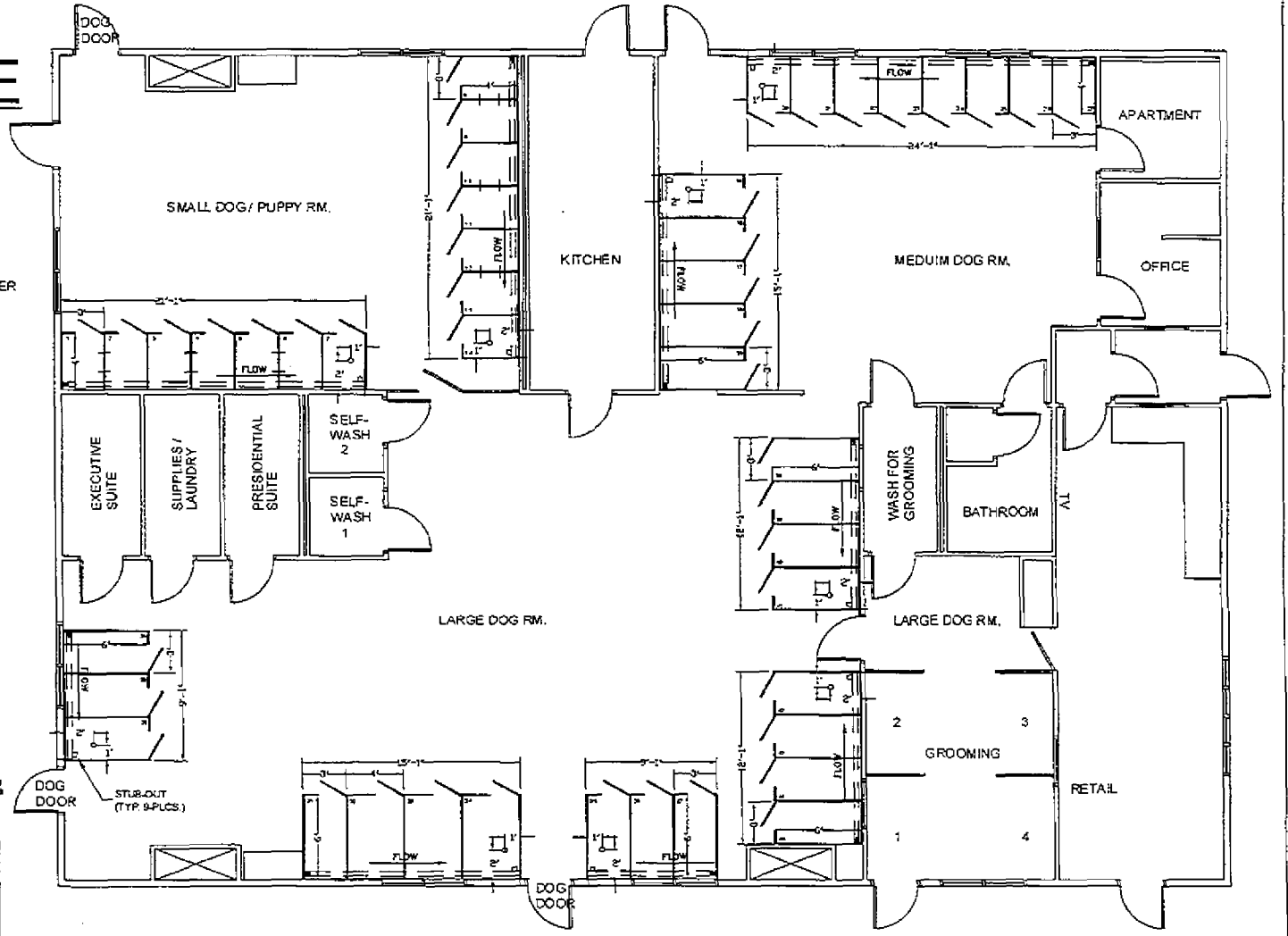
I HAVE REVIEWED THIS DRAWING AND APPROVE THIS LAYOUT AS SHOWN WITH MY WRITTEN EXCEPTIONS, IF ANY. I ATTEST THAT THERE ARE NO COLLISIONS, LIGHT SWITCHES, OR ELECTRICAL IMPEDIMENTS THAT INTRUDE INTO THE KENNELS.

This document(s) contains information proprietary to T-KENNEL SYSTEMS, INC. Any reproduction, disclosure, or use of this document(s) is expressly prohibited unless written consent has been received by T-KENNEL SYSTEMS, INC.

NAME (PLEASE PRINT) _____

SIGNATURE _____ DATE _____

LEGEND	COLOR CHOICE AND # FOR PANELING	METAL CHOICES
— HOSE END	ROCE - 3530	2" X MESH ON SIDE PANEL
— VALVE	DARK BLUE - 8321	<input type="checkbox"/> STAINLESS
— 1/2" WATER FLOW	LIGHT GRAY - 2337	<input type="checkbox"/> GALVANIZED
— 3" DRAIN OUTLET	LIGHT PURPLE - 8343	
— SIDE TRANSFER DOOR	DARK GRAY - 2354	
— 7" HOOD GRAB		



RQR-30575
12/04/08 PC

SUP-13541
07-19-06 CC

RECEIVED
JUL 06 2006