

VICINITY MAP

TABULATION

APN:	138-03-602-009 / 010
Net Acreage	4.62
Existing Zoning	C-6P
Total Office SF	9,000
Total Warehouse SF	56,000
Total Building SF	65,000
Parking Required	86
Parking Provided	135

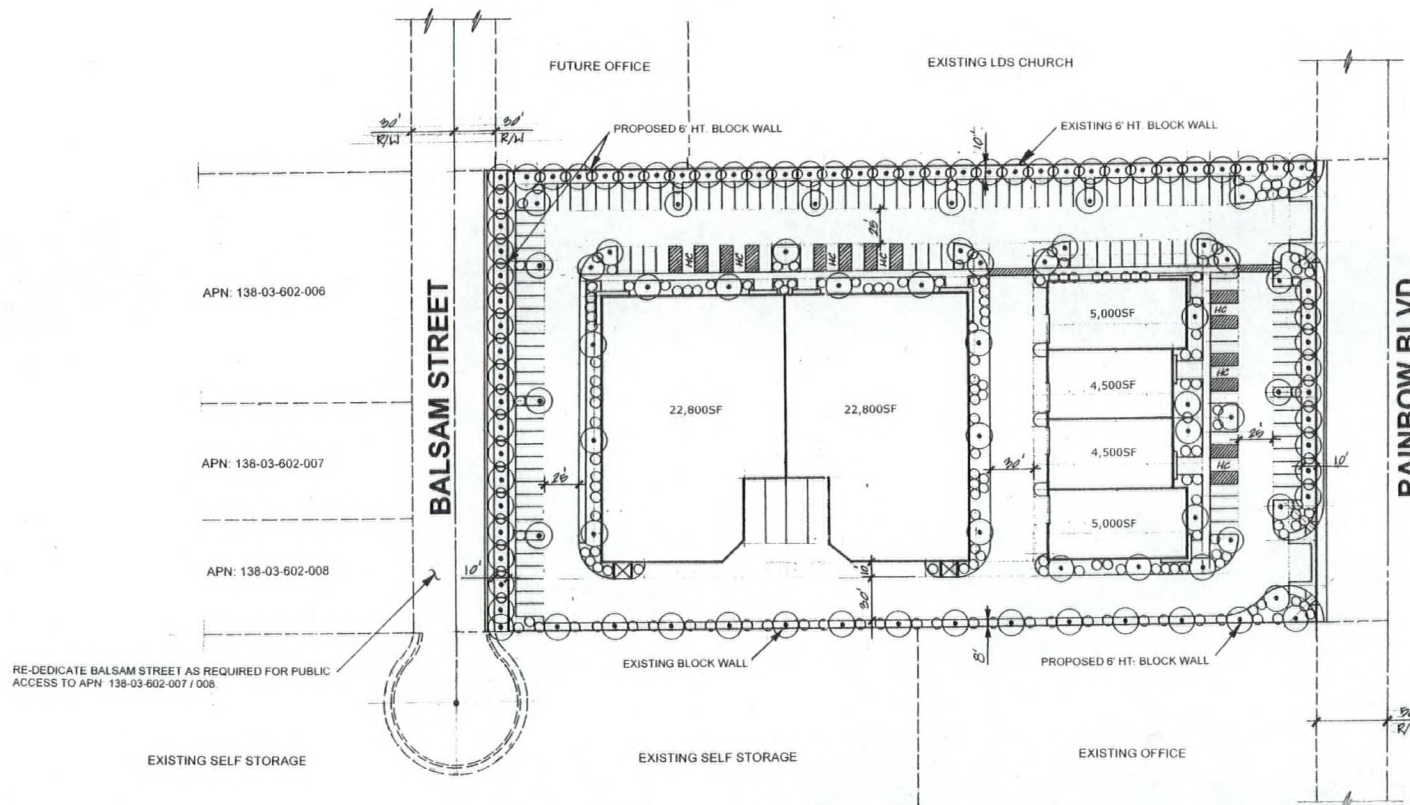
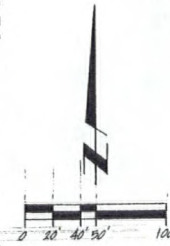
PLANT LIST

COMMON NAME	SIZE
TREES	
A Mondel Pines	24" Box
B Shuestring Acacia	24" Box
C Purple Leaf Plumbs	24" Box
D Dac's	24" Box
E Canary Palms	24" Box
SHRUBS	
1 Euonymus	5 Gal
2 Junipers	5 Gal
3 Dwarf Mock Orange	5 Gal
4 Red Fountain Grass	5 Gal
5 Red Top Foliage	5 Gal
6 Texas Rangers	5 Gal
7 Cats Claw	5 Gal
8 Indian Hawthorne "Pink"	5 Gal
9 Rosemary Creeping	5 Gal
10 Day Lilies	5 Gal

Note:
All Ground Cover to consist of Chat or Decomposed Granite (Typical)

RECEIVED

DEC 01 2008



APN: 138-03-602-006

APN: 138-03-602-007

APN: 138-03-602-008

RE-DEDICATE BALSAM STREET AS REQUIRED FOR PUBLIC ACCESS TO APN 138-03-602-007 / 008.

EXISTING SELF STORAGE

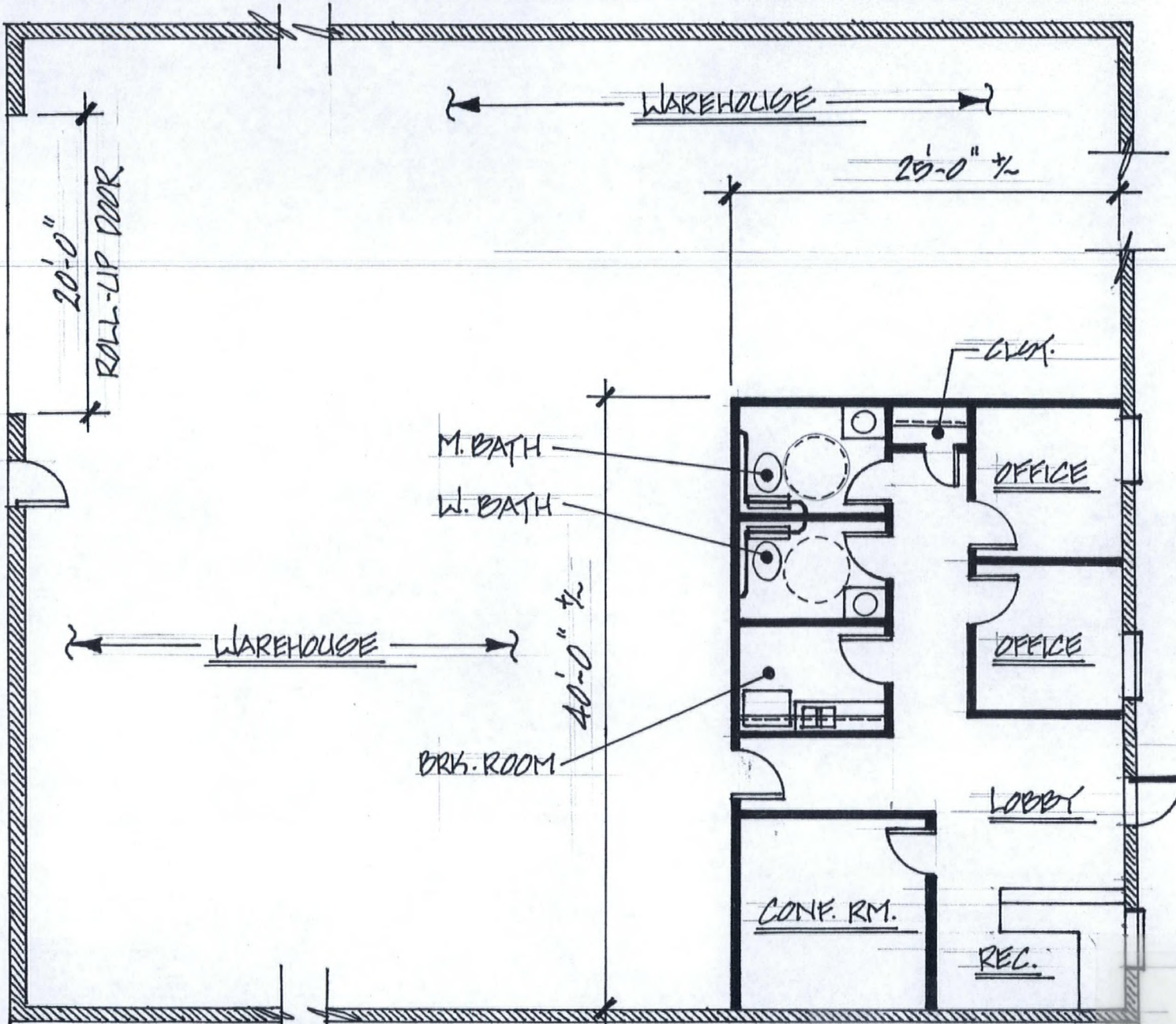
EXISTING SELF STORAGE

EXISTING OFFICE

RAINBOW CENTRE

SCALE: 1/2"=1'-0"	APPROVED BY:	DATE: 11/20/08
DATE: 11/20/08	DESIGNED BY: WJR	REVISION:
CONCEPTUAL SITE / LANDSCAPE PLAN		
WJR Consulting Services, LLC		DRAWING NUMBER:

SDR-30502
11/20/08 PC



NOTE: OFFICE SF. VARIES FROM
1,000 SF. TO 2,500 SF. (TYP.)

RECEIVED

OCT 01 2008

SDR-30502

11/20/08 PC

RAINBOW CENTER
TYPICAL FLOOR PLAN

RAINBOW CENTRE – BUSINESS PARK

BUILDING HT.
@ 30' – 0"



RECEIVED

OCT 01 2008

TYPICAL BUILDING ELEVATION

SDR-30502
11/20/08 PC