

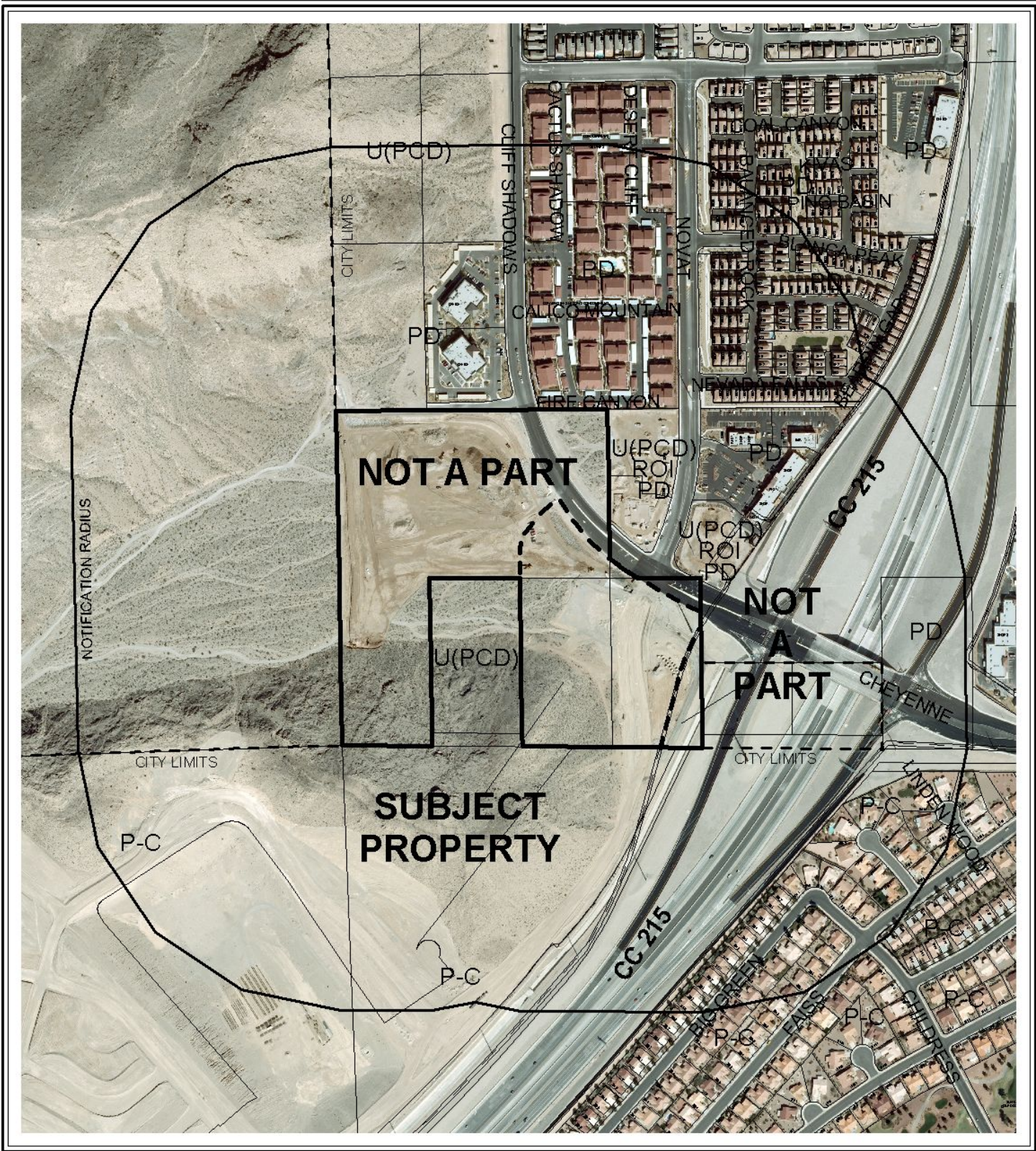
CASE: SDR-30614

RADIUS: 1000 FT

ZONING OF SUBJECT PROPERTY:
 PD (PLANNED DEVELOPMENT) ZONE [L (LOW DENSITY RESIDENTIAL) LONE MOUNTAIN WEST LAND USE DESIGNATION] ; U (UNDEVELOPED) ZONE [PCD (PLANNED COMMUNITY DEVELOPMENT) GENERAL PLAN DESIGNATION] ; P (PARK/SCHOOL/RECREATION/ OPEN SPACE) LONE MOUNTAIN WEST LAND USE DESIGNATION] AND C-V (CIVIC) ZONE

PROPOSED ZONING OF SUBJECT PROPERTY:
 PD (PLANNED DEVELOPMENT) ZONE [PF (PUBLIC FACILITIES) LONE MOUNTAIN WEST LAND USE DESIGNATION]





CASE: SDR-30614

RADIUS: 1000 FT

ZONING OF SUBJECT PROPERTY:

PD (PLANNED DEVELOPMENT) ZONE [L (LOW DENSITY RESIDENTIAL) LONE MOUNTAIN WEST LAND USE DESIGNATION] ; U (UNDEVELOPED) ZONE [PCD (PLANNED COMMUNITY DEVELOPMENT) GENERAL PLAN DESIGNATION] ; P (PARK/SCHOOL/RECREATION/ OPEN SPACE) LONE MOUNTAIN WEST LAND USE DESIGNATION] AND C-V (CIVIC) ZONE

PROPOSED ZONING OF SUBJECT PROPERTY:

PD (PLANNED DEVELOPMENT) ZONE [PF (PUBLIC FACILITIES) LONE MOUNTAIN WEST LAND USE DESIGNATION]

