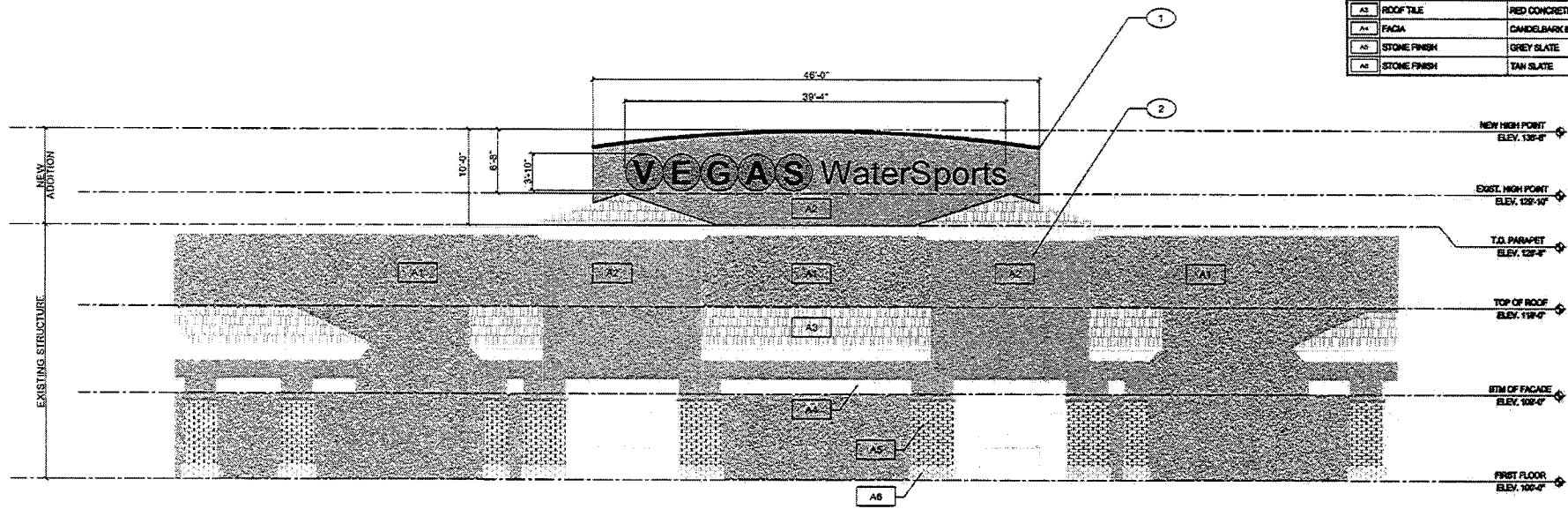




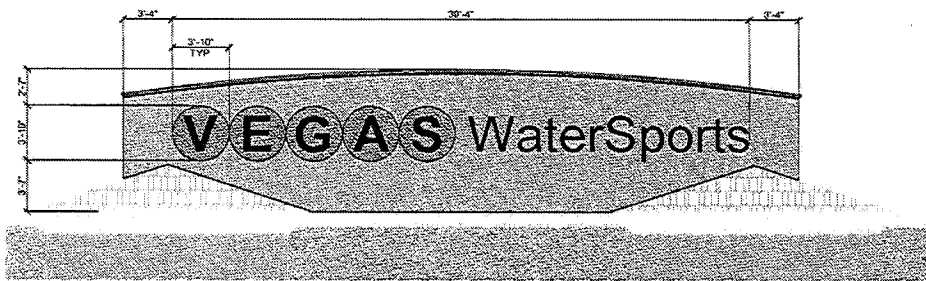
© Maxwell Group, Ltd.

KEYNOTES		
1	PROPOSED PARAPET 6'-0" ABOVE EXISTING BUILDING HEIGHT OF 128'-10"	
2	EXISTING BUILDING - SHOWN IN LIGHT LINES BELOW 128'-10"	

MATERIAL FINISH SCHEDULE		
MARK	MATERIAL	FINISH / COLOR
A1	CMU	BURBORGAN GREEN BRICK
A2	CMU	BURNED COPPER BRICK
A3	ROOF TILE	RED CONCRETE ROOF TILE
A4	FAÇADA	CANDELBARK BRICK
A5	STONE FINISH	GREY SLATE
A6	STONE FINISH	TAN SLATE



1 FRONT EXTERIOR ELEVATION WITH SIGNAGE SHOWN
A6.01 SCALE: 3/16"=1'-0"



2 ENLARGED SIGNAGE LOCATION
A6.01 SCALE: 1/16"=1'-0"

RECEIVED
SEP 23 2008

MGA MAXWELL GROUP ARCHITECTURE, LLC
1111 WEST CLAYTON AVENUE, SUITE 1100, LAS VEGAS, NV 89102 (702) 885-8877
We warrant that the drawings were prepared by a professional engineer or architect licensed in the State of Nevada, and that the drawings were prepared in accordance with the applicable laws, regulations, and standards of the State of Nevada. We do not warrant that the drawings were prepared in accordance with the applicable laws, regulations, and standards of any other jurisdiction.

PROJECT: REGAL PLAZA LLC
6831 CRAIG ROAD
LAS VEGAS, NEVADA
SHEET: EXTERIOR ELEVATION

DATE: 08-06-08
SCALE: AS INDICATED
DRAWN: DRY
CHECKED: 08-08-08

SHEET: A6.01

Submitted at Planning Commission

VAR-30271
11/06/08 PC

Date 11/20/08 Item # 26