

CASE: GPA-29877

RADIUS: 2500 FT

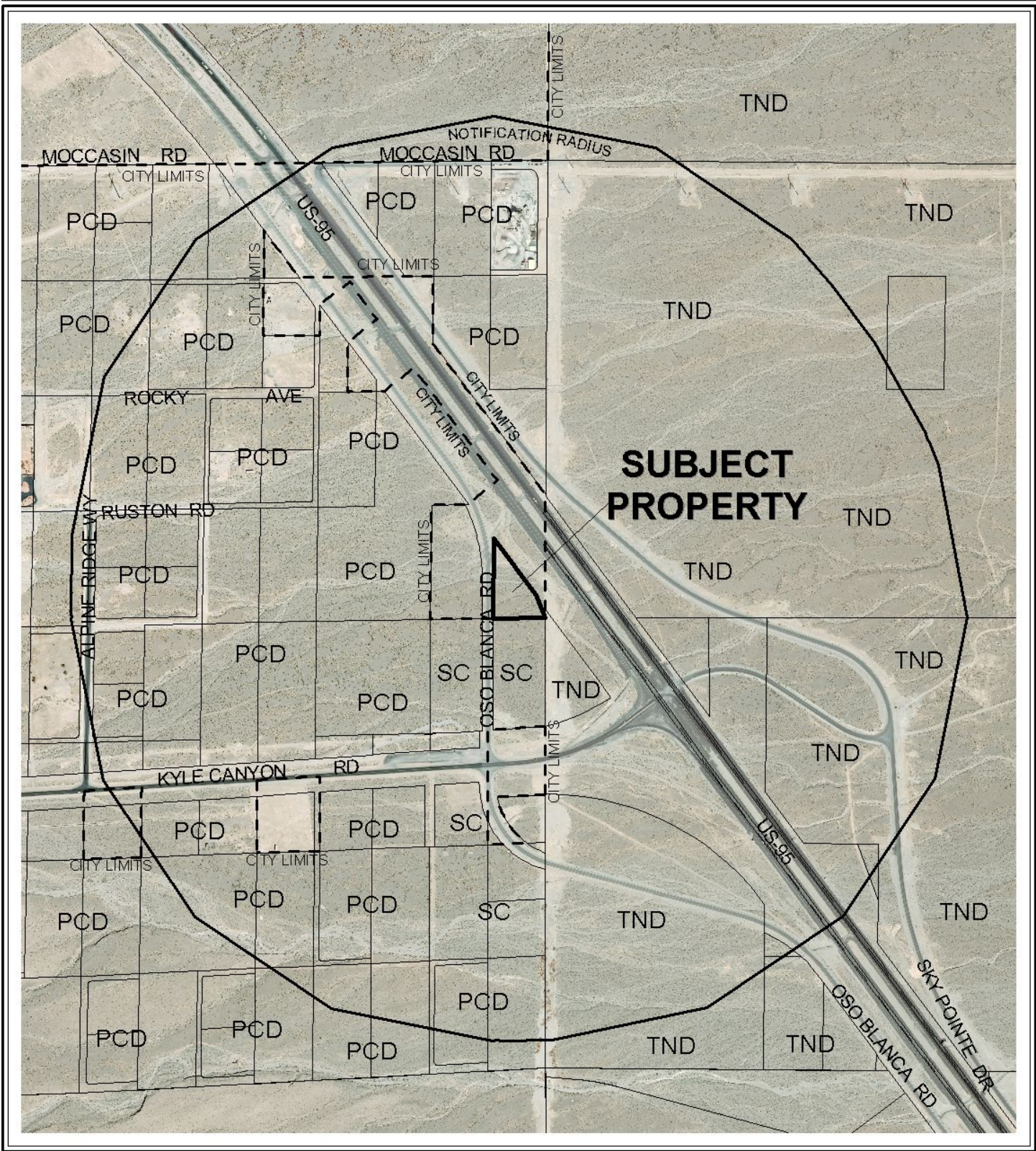
GENERAL PLAN LAND USE OF SUBJECT PROPERTY:

PCD (PLANNED COMMUNITY DEVELOPMENT)

PROPOSED GENERAL PLAN LAND USE OF SUBJECT PROPERTY:

GC (GENERAL COMMERCIAL)





CASE: GPA-29877

RADIUS: 2500 FT

GENERAL PLAN LAND USE OF SUBJECT PROPERTY:

PCD (PLANNED COMMUNITY DEVELOPMENT)

PROPOSED GENERAL PLAN LAND USE OF SUBJECT PROPERTY:

GC (GENERAL COMMERCIAL)

