



PLANNING & DEVELOPMENT DEPARTMENT

STATEMENT OF FINANCIAL INTEREST

Case Number: **SUP-29206** APN: 125-19-802-013, 125-19-802-006

Name of Property Owner: Patricia Mulroy, General Manager, Las Vegas Valley Water District

Name of Applicant: Shawn P. Mollus, Director of Las Vegas Valley Water District Engineering

Name of Representative: Peter J. Jauch, Engineering Design Manager

To the best of your knowledge, does the Mayor or any member of the City Council or Planning Commission have any financial interest in this or any other property with the property owner, applicant, the property owner or applicant's general or limited partners, or an officer of their corporation or limited liability company?

Yes

No

If yes, please indicate the member of the City Council or Planning Commission who is involved and list the name(s) of the person or persons with whom the City Official holds an interest. Also list the Assessor's Parcel Number if the property in which the interest is held is different from the case parcel.

City Official: _____

Partner(s): _____

APN: _____

Signature of Property Owner: *Patricia Mulroy*

Print Name: Patricia Mulroy

Subscribed and sworn before me

This 12th day of March, 2008
Dianne K West

Notary Public in and for said County and State

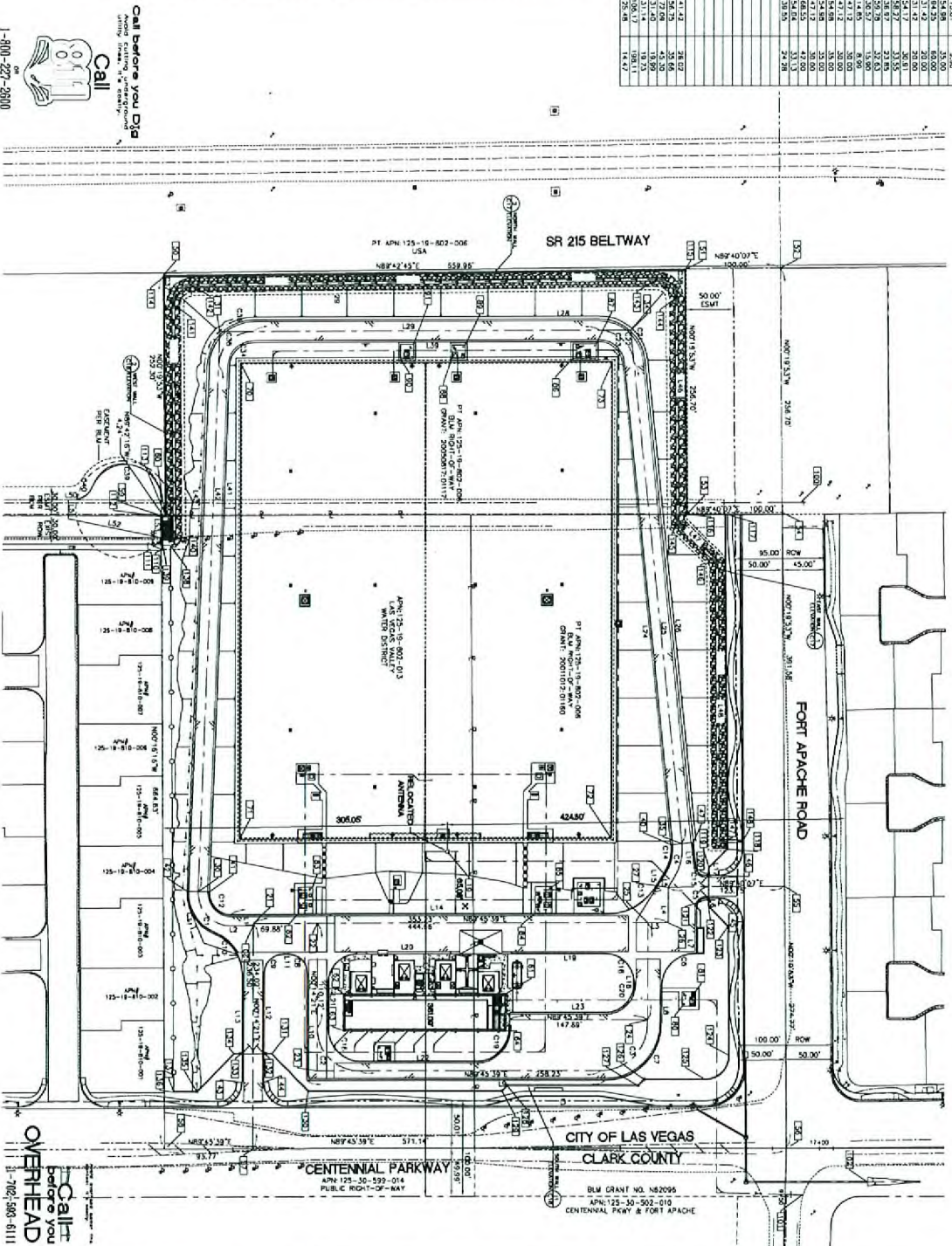


RECEIVED

SEP 3 0 2008

| CURVE LOCATION | DELTA | RADIUS | LENGTH | TANGENT |
|----------------|-------|--------|--------|---------|
| C1 | 30.00 | 30.00 | 30.00 | 30.00 |
| C2 | 30.00 | 30.00 | 30.00 | 30.00 |
| C3 | 30.00 | 30.00 | 30.00 | 30.00 |
| C4 | 30.00 | 30.00 | 30.00 | 30.00 |
| C5 | 30.00 | 30.00 | 30.00 | 30.00 |
| C6 | 30.00 | 30.00 | 30.00 | 30.00 |
| C7 | 30.00 | 30.00 | 30.00 | 30.00 |
| C8 | 30.00 | 30.00 | 30.00 | 30.00 |
| C9 | 30.00 | 30.00 | 30.00 | 30.00 |
| C10 | 30.00 | 30.00 | 30.00 | 30.00 |
| C11 | 30.00 | 30.00 | 30.00 | 30.00 |
| C12 | 30.00 | 30.00 | 30.00 | 30.00 |
| C13 | 30.00 | 30.00 | 30.00 | 30.00 |
| C14 | 30.00 | 30.00 | 30.00 | 30.00 |
| C15 | 30.00 | 30.00 | 30.00 | 30.00 |
| C16 | 30.00 | 30.00 | 30.00 | 30.00 |
| C17 | 30.00 | 30.00 | 30.00 | 30.00 |
| C18 | 30.00 | 30.00 | 30.00 | 30.00 |
| C19 | 30.00 | 30.00 | 30.00 | 30.00 |
| C20 | 30.00 | 30.00 | 30.00 | 30.00 |
| C21 | 30.00 | 30.00 | 30.00 | 30.00 |
| C22 | 30.00 | 30.00 | 30.00 | 30.00 |
| C23 | 30.00 | 30.00 | 30.00 | 30.00 |
| C24 | 30.00 | 30.00 | 30.00 | 30.00 |
| C25 | 30.00 | 30.00 | 30.00 | 30.00 |
| C26 | 30.00 | 30.00 | 30.00 | 30.00 |
| C27 | 30.00 | 30.00 | 30.00 | 30.00 |
| C28 | 30.00 | 30.00 | 30.00 | 30.00 |
| C29 | 30.00 | 30.00 | 30.00 | 30.00 |
| C30 | 30.00 | 30.00 | 30.00 | 30.00 |
| C31 | 30.00 | 30.00 | 30.00 | 30.00 |
| C32 | 30.00 | 30.00 | 30.00 | 30.00 |
| C33 | 30.00 | 30.00 | 30.00 | 30.00 |
| C34 | 30.00 | 30.00 | 30.00 | 30.00 |
| C35 | 30.00 | 30.00 | 30.00 | 30.00 |
| C36 | 30.00 | 30.00 | 30.00 | 30.00 |
| C37 | 30.00 | 30.00 | 30.00 | 30.00 |
| C38 | 30.00 | 30.00 | 30.00 | 30.00 |
| C39 | 30.00 | 30.00 | 30.00 | 30.00 |
| C40 | 30.00 | 30.00 | 30.00 | 30.00 |

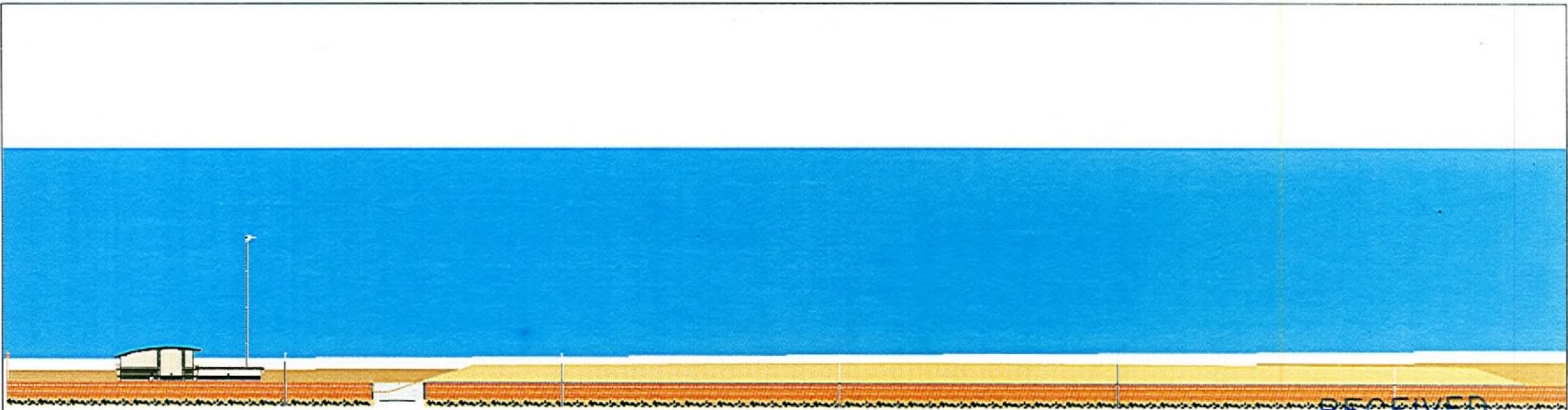
| LINE | LOCATION | LENGTH | BEARING |
|------|----------|---------|-------------|
| L1 | CA | 2.46' | N07°12'11"E |
| L2 | CA | 2.32' | N89°45'30"W |
| L3 | CA | 2.02' | N07°12'11"E |
| L4 | CA | 2.02' | N07°12'11"E |
| L5 | CA | 10.81' | N53°02'21"E |
| L6 | CA | 47.93' | N07°12'11"E |
| L7 | BC | 47.93' | N07°12'11"E |
| L8 | BC | 37.82' | N07°12'11"E |
| L9 | BC | 17.62' | N07°12'11"E |
| L10 | BC | 5.98' | N89°45'30"W |
| L11 | BC | 11.00' | N07°12'11"E |
| L12 | BC | 40.90' | N89°45'30"W |
| L13 | BC | 28.64' | N07°12'11"E |
| L14 | BC | 14.44' | N89°45'30"W |
| L15 | BC | 120.88' | N07°12'11"E |
| L16 | BC | 120.88' | N07°12'11"E |
| L17 | BC | 100.33' | N89°45'30"W |
| L18 | BC | 120.88' | N07°12'11"E |
| L19 | BC | 120.88' | N07°12'11"E |
| L20 | BC | 100.33' | N89°45'30"W |
| L21 | BC | 120.88' | N07°12'11"E |
| L22 | BC | 120.88' | N07°12'11"E |
| L23 | BC | 100.33' | N89°45'30"W |
| L24 | BC | 120.88' | N07°12'11"E |
| L25 | BC | 120.88' | N07°12'11"E |
| L26 | BC | 100.33' | N89°45'30"W |
| L27 | BC | 120.88' | N07°12'11"E |
| L28 | BC | 120.88' | N07°12'11"E |
| L29 | BC | 100.33' | N89°45'30"W |
| L30 | BC | 120.88' | N07°12'11"E |
| L31 | BC | 120.88' | N07°12'11"E |
| L32 | BC | 100.33' | N89°45'30"W |
| L33 | BC | 120.88' | N07°12'11"E |
| L34 | BC | 120.88' | N07°12'11"E |
| L35 | BC | 100.33' | N89°45'30"W |
| L36 | BC | 120.88' | N07°12'11"E |
| L37 | BC | 120.88' | N07°12'11"E |
| L38 | BC | 100.33' | N89°45'30"W |
| L39 | BC | 120.88' | N07°12'11"E |
| L40 | BC | 120.88' | N07°12'11"E |
| L41 | BC | 100.33' | N89°45'30"W |
| L42 | BC | 120.88' | N07°12'11"E |
| L43 | BC | 120.88' | N07°12'11"E |
| L44 | BC | 100.33' | N89°45'30"W |
| L45 | BC | 120.88' | N07°12'11"E |
| L46 | BC | 120.88' | N07°12'11"E |
| L47 | BC | 100.33' | N89°45'30"W |
| L48 | BC | 120.88' | N07°12'11"E |
| L49 | BC | 120.88' | N07°12'11"E |
| L50 | BC | 100.33' | N89°45'30"W |
| L51 | BC | 120.88' | N07°12'11"E |
| L52 | BC | 120.88' | N07°12'11"E |
| L53 | BC | 100.33' | N89°45'30"W |
| L54 | BC | 120.88' | N07°12'11"E |
| L55 | BC | 120.88' | N07°12'11"E |
| L56 | BC | 100.33' | N89°45'30"W |
| L57 | BC | 120.88' | N07°12'11"E |
| L58 | BC | 120.88' | N07°12'11"E |
| L59 | BC | 100.33' | N89°45'30"W |
| L60 | BC | 120.88' | N07°12'11"E |
| L61 | BC | 120.88' | N07°12'11"E |
| L62 | BC | 100.33' | N89°45'30"W |
| L63 | BC | 120.88' | N07°12'11"E |
| L64 | BC | 120.88' | N07°12'11"E |
| L65 | BC | 100.33' | N89°45'30"W |
| L66 | BC | 120.88' | N07°12'11"E |
| L67 | BC | 120.88' | N07°12'11"E |
| L68 | BC | 100.33' | N89°45'30"W |
| L69 | BC | 120.88' | N07°12'11"E |
| L70 | BC | 120.88' | N07°12'11"E |
| L71 | BC | 100.33' | N89°45'30"W |
| L72 | BC | 120.88' | N07°12'11"E |
| L73 | BC | 120.88' | N07°12'11"E |
| L74 | BC | 100.33' | N89°45'30"W |
| L75 | BC | 120.88' | N07°12'11"E |
| L76 | BC | 120.88' | N07°12'11"E |
| L77 | BC | 100.33' | N89°45'30"W |
| L78 | BC | 120.88' | N07°12'11"E |
| L79 | BC | 120.88' | N07°12'11"E |
| L80 | BC | 100.33' | N89°45'30"W |
| L81 | BC | 120.88' | N07°12'11"E |
| L82 | BC | 120.88' | N07°12'11"E |
| L83 | BC | 100.33' | N89°45'30"W |
| L84 | BC | 120.88' | N07°12'11"E |
| L85 | BC | 120.88' | N07°12'11"E |
| L86 | BC | 100.33' | N89°45'30"W |
| L87 | BC | 120.88' | N07°12'11"E |
| L88 | BC | 120.88' | N07°12'11"E |
| L89 | BC | 100.33' | N89°45'30"W |
| L90 | BC | 120.88' | N07°12'11"E |
| L91 | BC | 120.88' | N07°12'11"E |
| L92 | BC | 100.33' | N89°45'30"W |
| L93 | BC | 120.88' | N07°12'11"E |
| L94 | BC | 120.88' | N07°12'11"E |
| L95 | BC | 100.33' | N89°45'30"W |
| L96 | BC | 120.88' | N07°12'11"E |
| L97 | BC | 120.88' | N07°12'11"E |
| L98 | BC | 100.33' | N89°45'30"W |
| L99 | BC | 120.88' | N07°12'11"E |
| L100 | BC | 120.88' | N07°12'11"E |



Call Before You Dig
 800-4-A-DIG
 1-800-227-2800
 1-702-451-7544

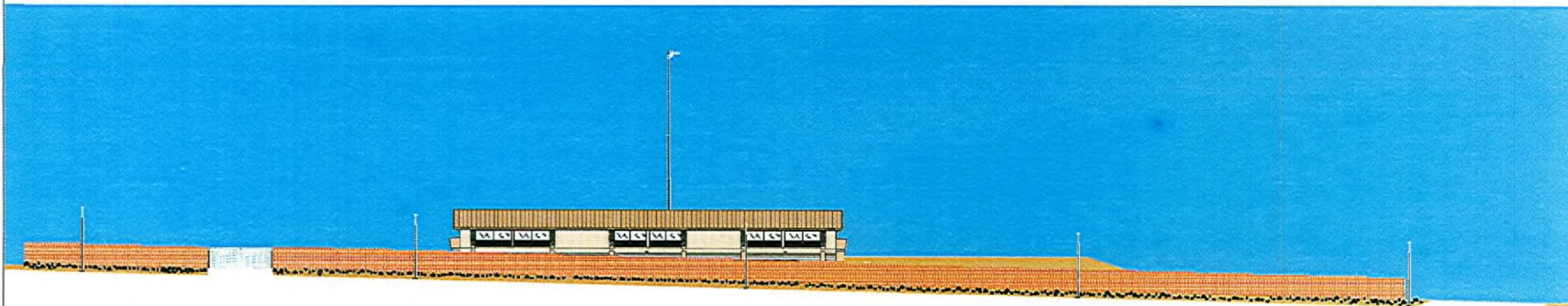
SUP-29206
10/09/08 PC - REVISED

| | | | |
|---|---|---|---|
| REVISIONS 1. DATE: 10/09/08 2. BY: [Signature] 3. BY: [Signature] | CENTENNIAL 2635 ZONE RESERVOIR AND 2745 ZONE PUMPING STATION | VERIFY SCALE 1" = 50.00' BAR REPRESENTS ONE AND ONE-HALF INCHES ON ORIGINAL | LAS VEGAS VALLEY WATER DISTRICT G.C. WALLACE COMPANIES ENGINEERS PLANNERS SURVEYORS 1000 S. RAYBOW BOULEVARD, LAS VEGAS, NV 89106 P. TOLBERT R. KLEBER G. WALLACE |
| | SITE HORIZONTAL CONTROL PLAN | DRAWN BY: [Signature] DATE: 07/20/07 CHECKED BY: [Signature] DATE: 08/15/07 RECOMMENDED BY: [Signature] DATE: [Blank] ACCEPTED BY: [Signature] DATE: [Blank] | PROJECT NO.: [Blank] SHEET NO.: [Blank] OF [Blank] |



FORT APACHE ROAD - LOOKING WEST - BLOCK WALL

RECEIVED
AUG 18 2008



CENTENNIAL PARKWAY - LOOKING NORTH - BLOCK WALL

2635 ZONE RESERVOIR AND 2745 ZONE PUMPING STATION

FORT APACHE ROAD

SUP-29206
09/11/08 PC
REVISED

PROJECT NO: 00-902
 ENGINEER: PLANNED SERVICES
 ARCHITECT: TRIMARK CONSULTANTS
 1450 WILSON BLVD, SUITE 200, LAS VEGAS, NV 89102
 702-735-1100
 TRIMARK CONSULTANTS
 1450 WILSON BLVD, SUITE 200, LAS VEGAS, NV 89102
 702-735-1100

LAS VEGAS VALLEY WATER DISTRICT
 2635 ZONE RESERVOIR
 AND 2745 ZONE PUMPING STATION

DATE: 09/11/08
 DRAWN BY: JLM
 CHECKED BY: JLM
 APPROVED BY: JLM

NO. 11
 SHEET NO. 11 OF 21
 TOTAL SHEETS 21

100% COMPLETE