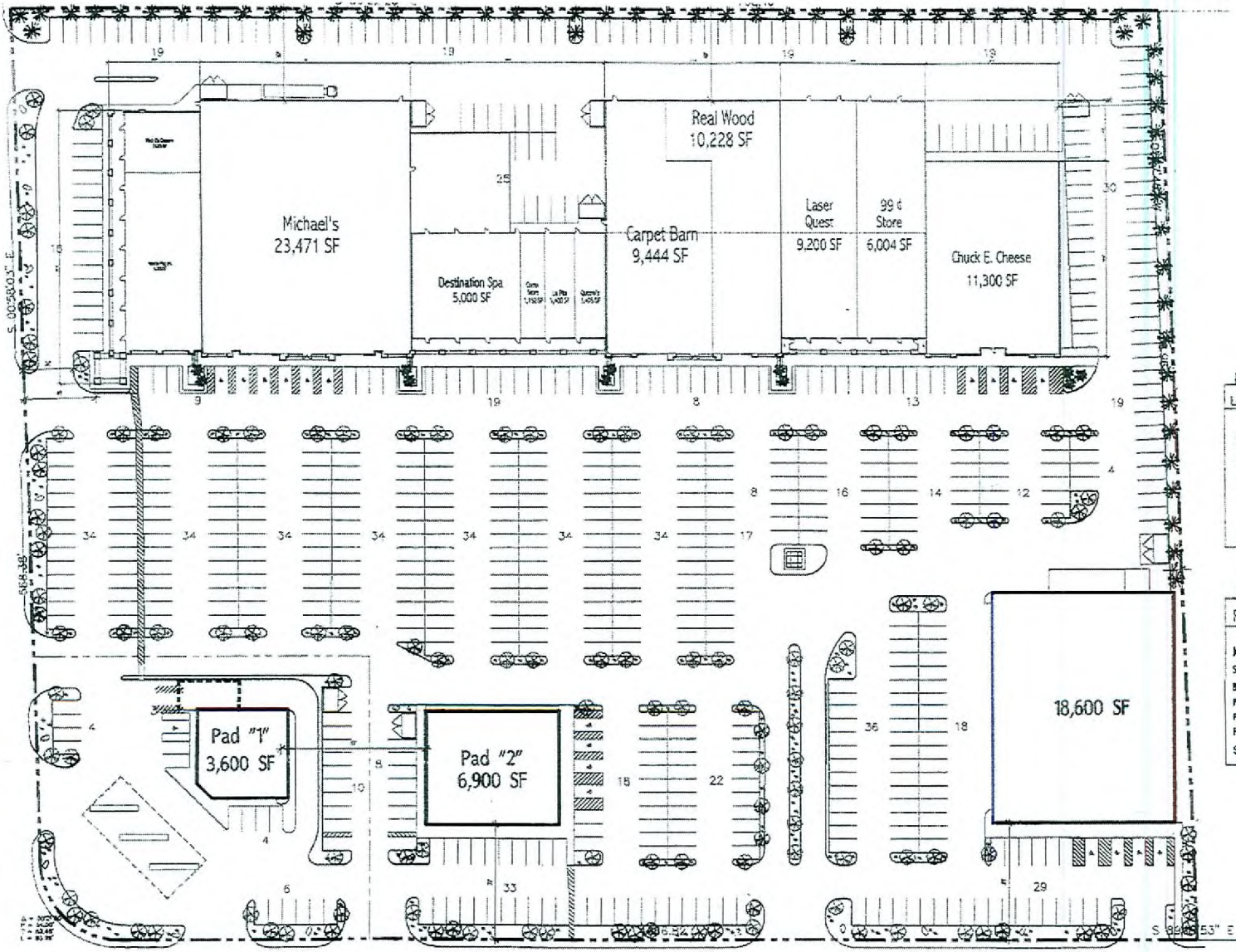


TENAYA WAY (80' R.O.W.)



LAKE MEAD BOULEVARD (100' R.O.W.)

LANDSCAPING LEGEND

| Shrs | Landscaping Material |
|------|------------------------------|
| ⊗ | 24" Box Colorado Blue Spruce |
| ⊗ | 24" Box Alberta Pine |
| ⊗ | 24" Box Mexican Fan Palm |
| ○ | 4" 100" Ornamental Rock |
| • | 5 Gallon Red Yucca |

Plaster areas to be covered in decomposed granite or other approved material.

PROJECT INFORMATION

| | |
|---------------------------|---|
| Jurisdiction: | City of Las Vegas |
| Site Area: | 47,826 SF (0.83 Net Acres) - must be verified |
| Building Area: | 115,811 SF |
| Parking Required: | 115,811 SF X 55/1,000 = 637 SPACES |
| Parking Provided: | 713 SPACES (62,000 SF) |
| Parking Stall Dimensions: | 9' Wide X 19' Deep (19' with overhang) |
| Site Coverage: | 24.5% |

RECEIVED
SEP 09 2008

SUP-29867
10/23/08 PC

