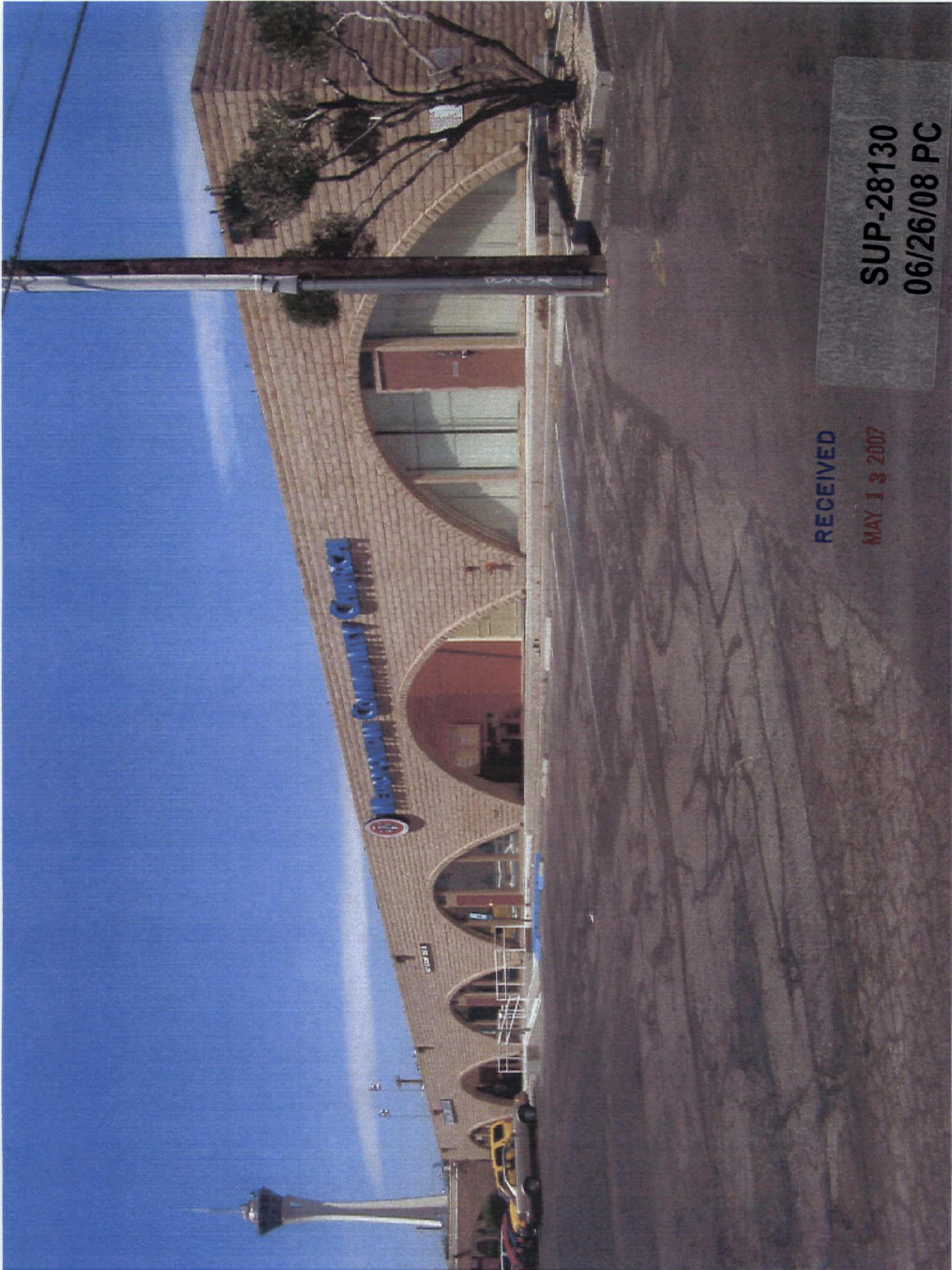


RECEIVED

MAY 13 2007

SUP-28130

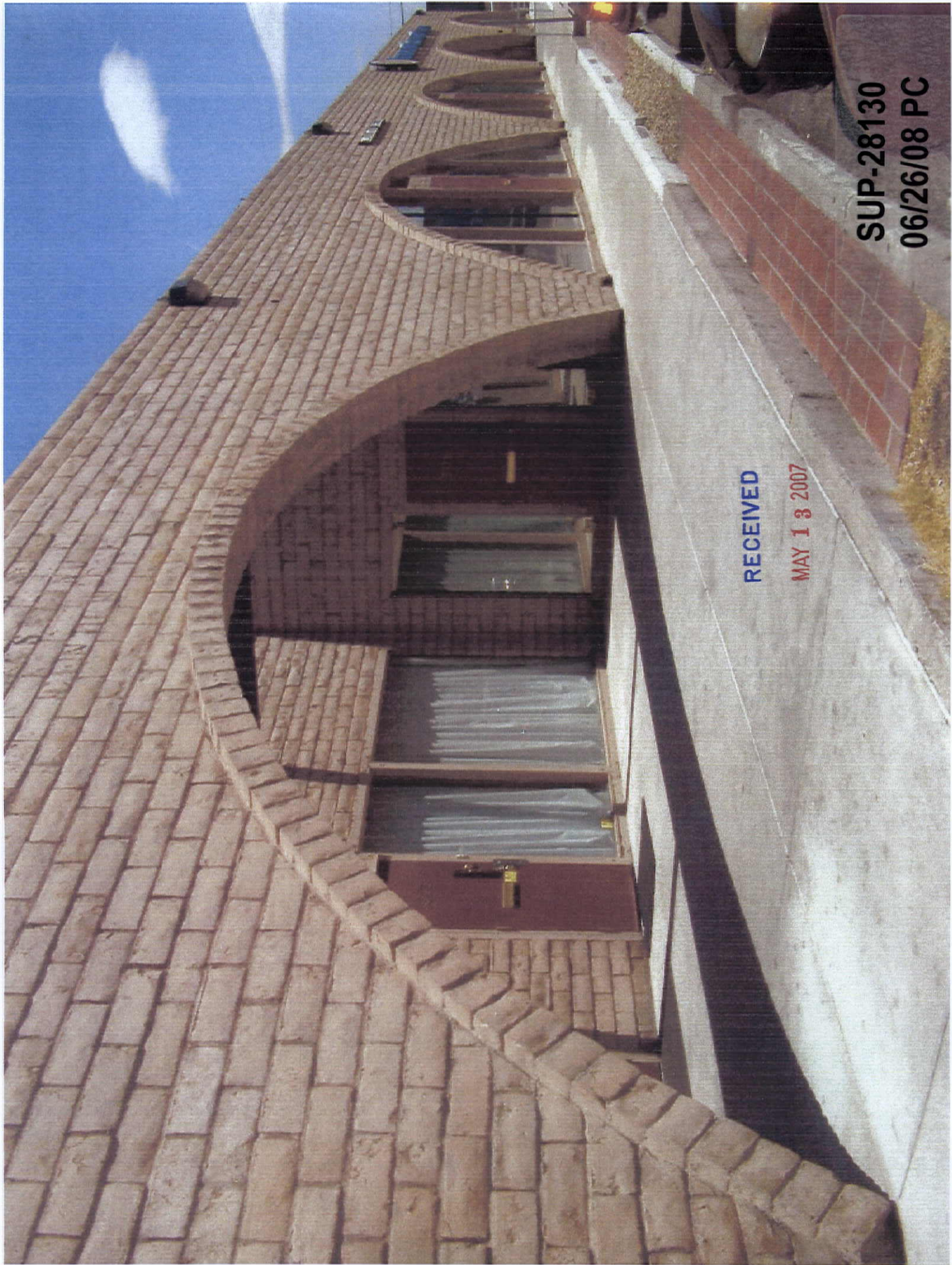
06/26/08 PC



RECEIVED

MAY 13 2007

SUP-28130  
06/26/08 PC



RECEIVED

MAY 13 2007

SUP-28130  
06/26/08 PC



**SUP-28130 - APPLICANT: FOCUS IN SOUTHERN NEVADA - OWNER: METROPOLITAN COMMUNITY CHURCH OF LAS VEGAS  
1140 ALMOND TREE LANE, SUITE #306  
JUNE 26, 2008 PLANNING COMMISSION**

05/21/08



**SUP-28130 - APPLICANT: FOCUS IN SOUTHERN NEVADA - OWNER: METROPOLITAN COMMUNITY CHURCH OF LAS VEGAS  
1140 ALMOND TREE LANE, SUITE #306  
JUNE 26, 2008 PLANNING COMMISSION**

05/21/08



**SUP-28130 - APPLICANT: FOCUS IN SOUTHERN NEVADA - OWNER: METROPOLITAN COMMUNITY CHURCH OF LAS VEGAS  
1140 ALMOND TREE LANE, SUITE #306  
JUNE 26, 2008 PLANNING COMMISSION**

05/21/08