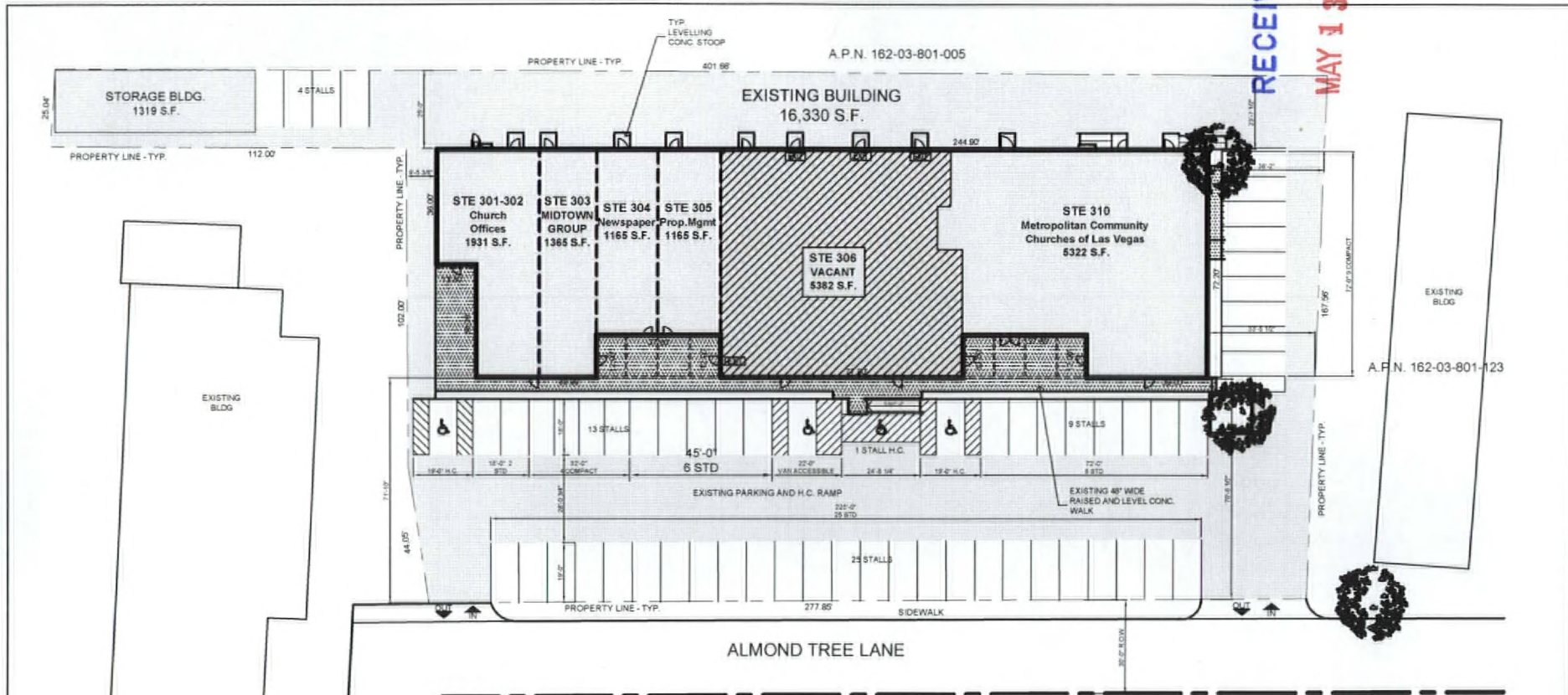


RECEIVED
MAY 1 2007



METROPOLITAN COMMUNITY
CHURCHES OF LAS VEGAS
SPECIAL USE PERMIT FOR SUITE 306
1140 ALMOND TREE LANE
LAS VEGAS, NEVADA 89104

SITE PLAN
Scale: 1/32" = 1'-0"



A.P.N. 162-03-802-001

PROJECT DATA
 JURISDICTION - CITY OF LAS VEGAS
 APPLICABLE CODES
 2006 INTERNATIONAL BUILDING CODE WITH AMENDMENTS
 2006 UNIFORM PLUMBING CODE WITH AMENDMENTS
 2006 MECHANICAL CODE WITH AMENDMENTS
 2006 NATIONAL ELECTRICAL CODE WITH AMENDMENTS

PARCEL NUMBER	162-03-801-131
ZONING	C1
OCCUPANCY TYPE	B
USE (EXISTING)	VACANT
USE (PROPOSED)	NON PROFIT
NUMBER OF STORIES	
ALLOWABLE	2
ACTUAL	1
PROJECT AREAS	
PROPOSED	5,382 S.F.
TYPE OF CONSTRUCTION	RE
SPRINKLERS	YES (EXISTING)

A.P.N. 162-03-802-002

CODE ANALYSIS

SUITE 306	5,382 S.F. @ 4' x 10' = 54
OFFICES	
EXITING	
SUITE 306	
WIDTH OF EXIT REQUIRED	6'6" ± + 10' ±
WIDTH OF EXIT PROVIDED	10'

PARKING NOTE
 THESE 9 ADDITIONAL PARKING SPACES AVAILABLE ACROSS THE STREET ON THE PROPERTY DESIGNATED AS APN 162-03-802-001 SHD NOT REFER TO COVENANT DOCUMENTS ON FILE WITH THE CITY OF LAS VEGAS AND PARCEL MAP SURVEY MADE BY BAUGHMAN & TURNER, INC. LAND SURVEYORS AND DATED 10/98 AND FILED 6/4/02. SAID SURVEY IS MADE AN INTEGRAL PART OF THIS SET OF DRAWINGS.

PARKING REQUIREMENTS FOR SUITE 306

OFFICES	5,382 S.F. @ 4'x10' S.F.
REQUIRED	22 (21 STD + 1 HANDICAP) + 22
PROVIDED	22 (21 STD + 1 HANDICAP) + 22

PARKING REQUIREMENTS FOR ENTIRE PROPERTY

SAFECTUARY SUITE 310	2,381 S.F. @ 10'x10 S.F. = 24
OFFICE/RENOVATED/FIXED SEATING	11,208 S.F. @ 4'x10' S.F. = 68
SUITE 301, 302, 303, 304, 305, 308	85 STD + 3 HANDICAP = 68
TOTAL PARKING REQUIRED	87 STD + 4 HANDICAP = 61
TOTAL PARKING PROVIDED	87 STD + 4 HANDICAP = 61

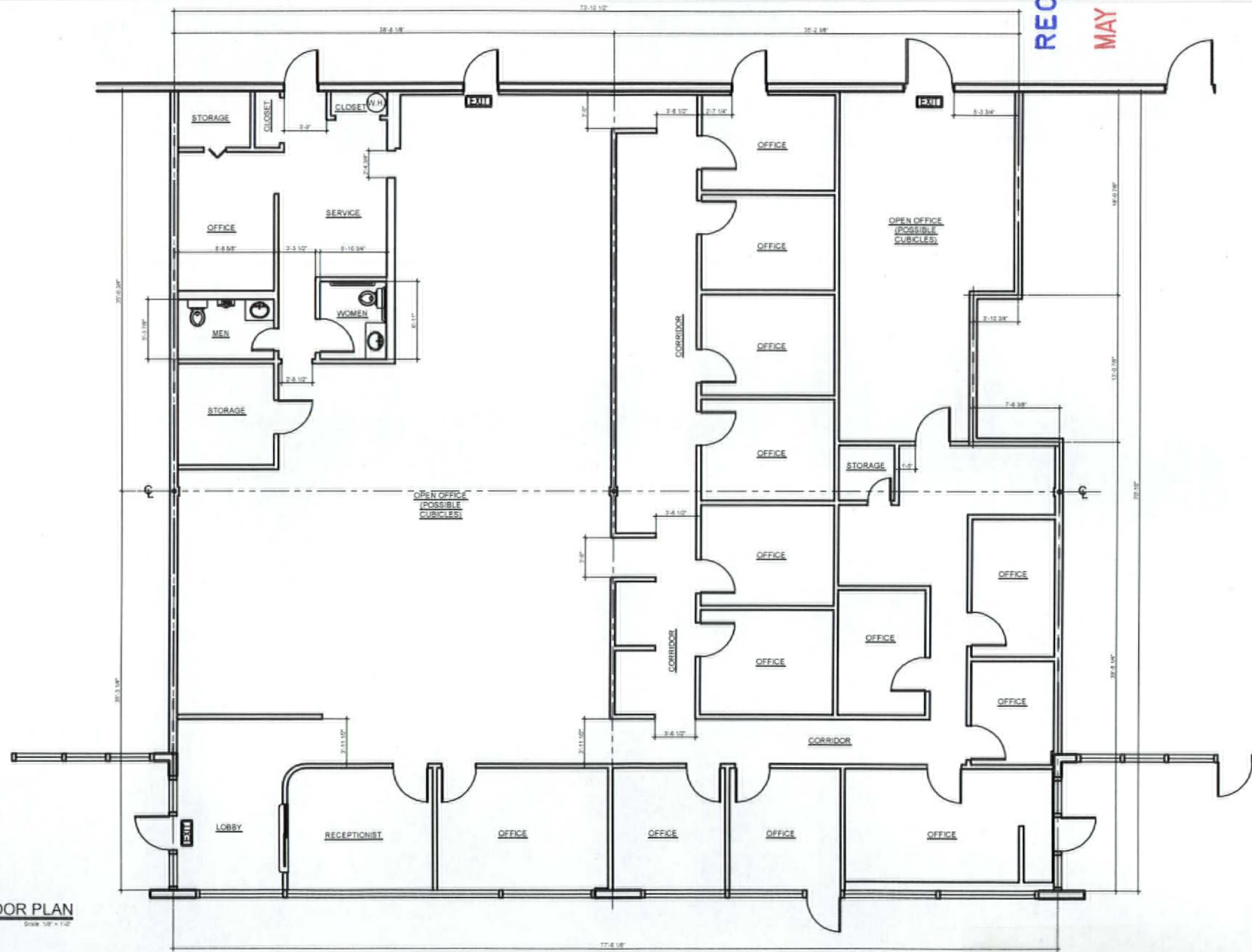
HOURS OF OPERATION

OFFICES	MON THRU FRI 8 am to 5pm CLOSED WEEKENDS
CHURCH	SAT 8 am to 1 pm SUN 8 am to 1 pm CLOSED WEEK DAYS

A.P.N. 162-03-802-003

SUP-28130
06/26/08 PC

RECEIVED
MAY 13 2007



FLOOR PLAN
Scale: 1/8" = 1'-0"

METROPOLITAN COMMUNITY
CHURCHES OF LAS VEGAS
SPECIAL USE PERMIT FOR SUITE 306
1140 ALMOND TREE LANE
LAS VEGAS, NEVADA 89104

DATE	12/11/07
BY	WJ
REVISION	
NO.	DESCRIPTION
1	ISSUED FOR PERMIT
2	REVISED

SUP-28130
06/26/08 PC