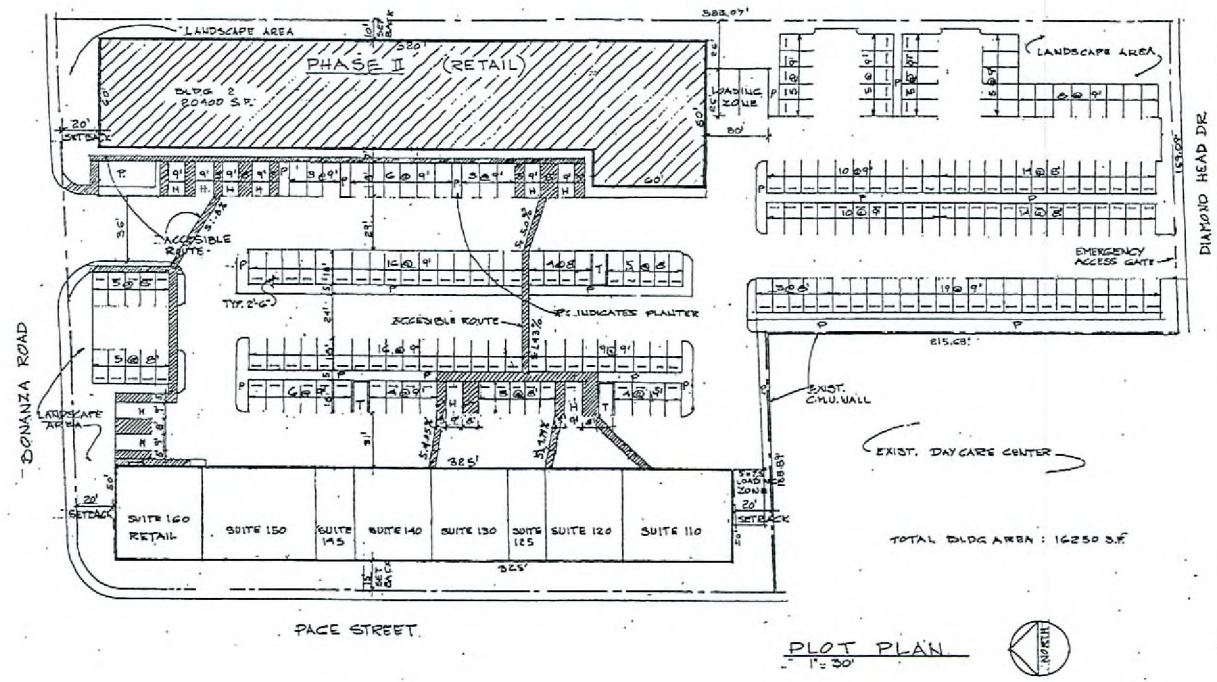
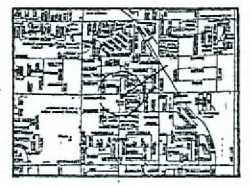


LEGAL DESCRIPTION:
 BEING A PORTION OF THE NE¼ AT THE NW¼
 OF SECTION 32, TOWNSHIP 20 S, RANGE 62 E
 AS RECORDED AT THE CLARK COUNTY, NV,
 RECORDER'S OFFICE.
 A.P.N.: 140-30-114-048



BUILDING ANALYSIS

Furniture Store	8740 S.F.
Furniture warehouse	2810 S.F.
Subtotal: 11550 S.F.	
Fast Food Eatery: Seating	3623 S.F.
Kitchens	2100 S.F.
Rest rooms	424 S.F.
Subtotal: 6207 S.F.	
Meat Market	2035 S.F.
Sprinklers reseat room	44 S.F.
Exterior walls	528 S.F.
Interior 6" wall	38 S.F.
Subtotal: 2643 S.F.	
TOTAL BUILDING AREA: 20400 S.F.	

PARKING ANALYSIS

PHASE 1 (EXISTING)

Auto repair garage: 5 spaces + 1 per 200 S.F.
 5 + (16250 S.F. ÷ 200) = 86.25 spaces.

PHASE 2 (PROPOSED)

Furniture Store	3470 S.F. ÷ 175 = 19.8 spaces
Furniture warehouse	2810 S.F. ÷ 2300 = 1.22 spaces
Subtotal: 21.02 spaces	
Fast Food Eatery	3623 S.F. ÷ 60 = 60.38 spaces
Kitchens	2504 S.F. ÷ 200 = 12.52 spaces
Subtotal: 72.90 spaces	
Meat Market	2035 S.F. ÷ 175 = 11.62 spaces
TOTAL PARKING REQUIRED: 237.7 SPACES.	
TOTAL PARKING PROVIDED: 201 SPACES plus 3 loading.	

SUP-27933
 06/12/08 PC
 RECEIVED
 APR 23 2008

NORA H. MASANA
 ARCHITECT
 2207 WEST GOWAN ROAD
 NORTH LAS VEGAS NV 89032
 (702) 368-0727

CAMACHO AUTO CENTER, PHASE 2
 4181 EAST BONANZA
 Las Vegas NV 89110
 Owner: Hector Camacho
 (702) 460-4776

SITE PLAN

DRAWN: N.H.M.
 DATE: 10-16-07
 SCALE: 1" = 30'

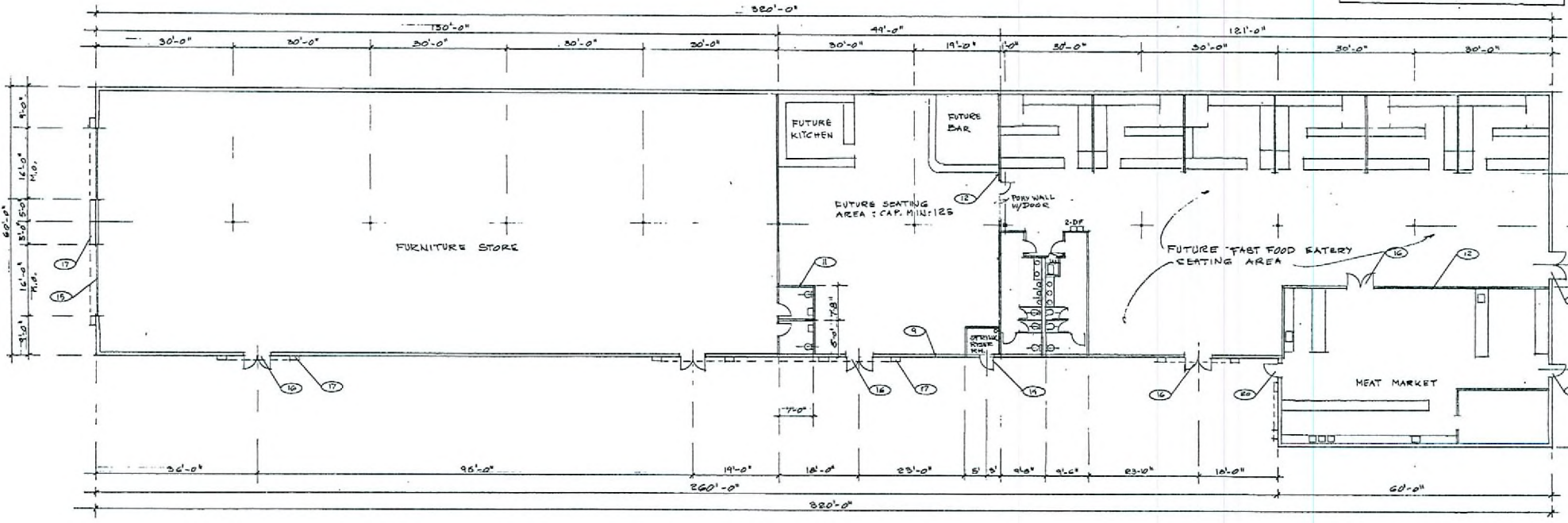


SUP-27933
06/12/08 PC

- KEY NOTES**
1. 3" MINIMUM HIGH PARAPET.
 2. METAL CAP PAINTED.
 3. FLASHING.
 4. 3 PLY BUILT UP ROOFING.
 5. PLYWOOD / OSB SHEATHING.
 6. APPROVED MANUFACTURED TRUSSES @ 24" O.C.
 7. R-30 BATT INSULATION.
 8. 8" GYP. AD. TAPED, TEXTURED & PAINTED.
 9. 8" x 8" 1" FLUTE FACE CONCRETE BLOCK, SOLID GROUTED.
 10. 8" x 8" 1" FLUTE FACE CONCRETE BLOCK, SOLID GROUTED.
 11. 2" x 4" @ 16" O.C.
 12. 2" x 4" @ 16" O.C.
 13. DECORATIVE MURAL.
 14. 7' x 7' METAL DOOR.
 15. 16" x 4" PIXED WINDOW.
 16. 8' x 7' GLASS DOUBLE DOORS.
 17. FURN. OUT WITH STUCCO.
 18. LIGHT FIXTURE.
 19. STUCCO WEEP SCREED.
 20. 3' x 7' GLASS DOOR.
 21. 8" WIDE x 2" DEEP STUCCO HOLDING.

OCCUPANCY ANALYSIS

Occupancy: M	
Furniture Store	8740 S.F. @ 30=291.33 Occupants
Furniture Warehouse	2810 S.F. @ 500= 6.36 Occupants
Subtotal	300.69 Occupants
Occupancy: A2	
Fast Food Seating	3623 S.F. @ 15=241.53 Occupants
* Kitchens & R.Rms.	7584 S.F. @ 200=37.92 Occupants
Subtotal	264.45 Occupants
Occupancy: M	
Meat Market	2035 S.F. @ 30=67.83 Occupants
TOTAL OCCUPANTS	622.97 Occupants



FLOOR PLAN
1" = 10'-0"

<p>NORA H. MASANA ARCHITECT 2207 WEST GOWAN ROAD NORTH LAS VEGAS NV 89032 (702) 368-0727</p>	<p>CAMACHO AUTO CENTER, PHASE 2 4161 EAST BONANZA Las Vegas NV 89110 Owner: Hector Camacho (702) 460-1776</p>	<p>FLOOR PLAN</p>	<p>DRAWN: N.H. DATE: 10-3-07 SCALE: 1" = 10'-0"</p>
--	---	-------------------	---

SUP-27933
06/12/08 PC

