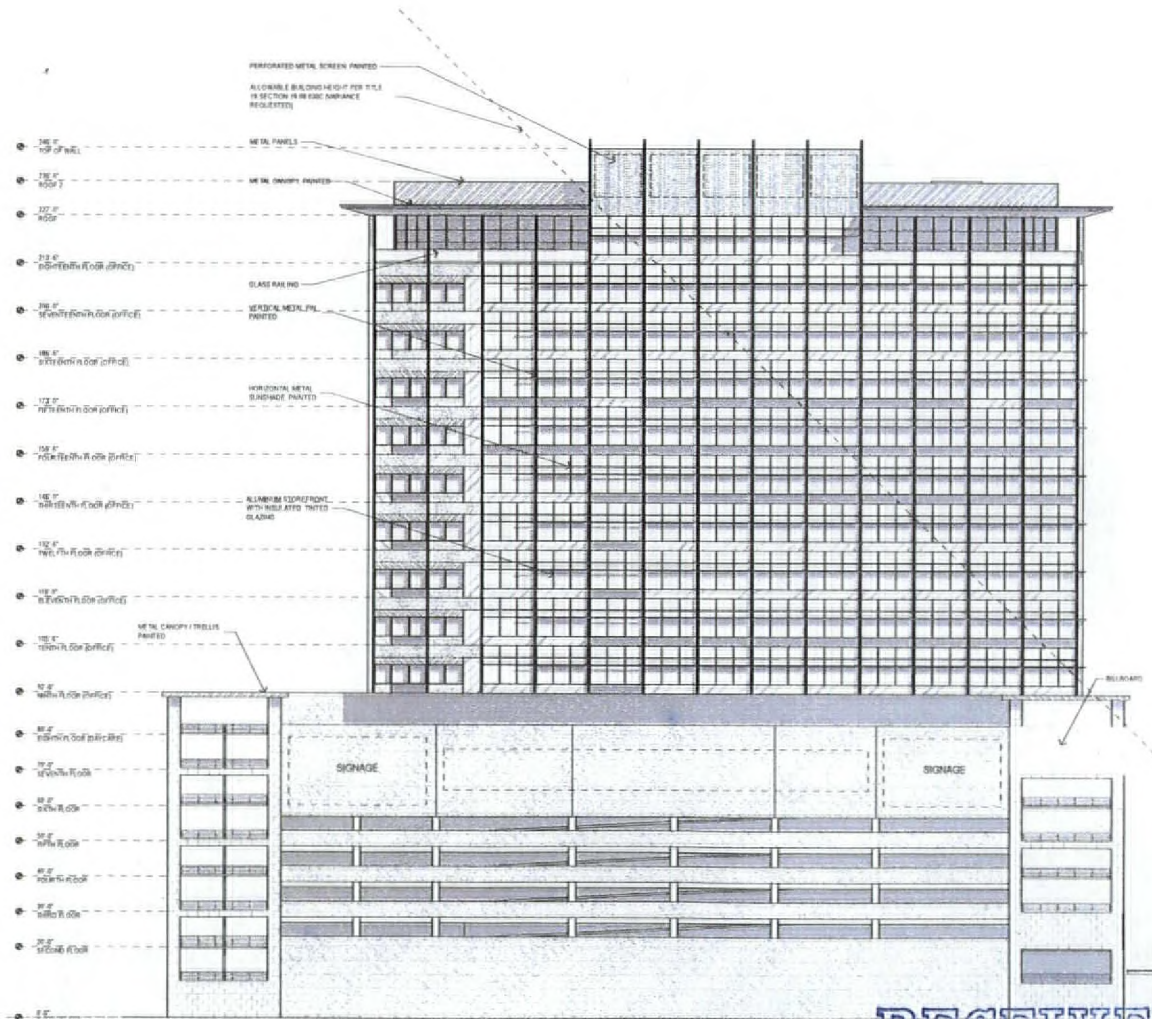


D1 WEST ELEVATION
1/16" = 1'-0"



D2 SOUTH ELEVATION
1/16" = 1'-0"

Ahern Corporate Center
Special Use Permit
SW Corner of Bonanza and Martin L. King
Las Vegas, Nevada 89106

APTUS Architecture

1200 South An Street
Suite 204
Las Vegas, Nevada 89104
P 702.833.1000
F 702.833.1111
www.aptusarchitecture.com

APTUS PROJECT NO. 06.011
ARCHITECT

DESIGNER

TITLE

COPYRIGHT 2006 BY APTUS ARCHITECTURE

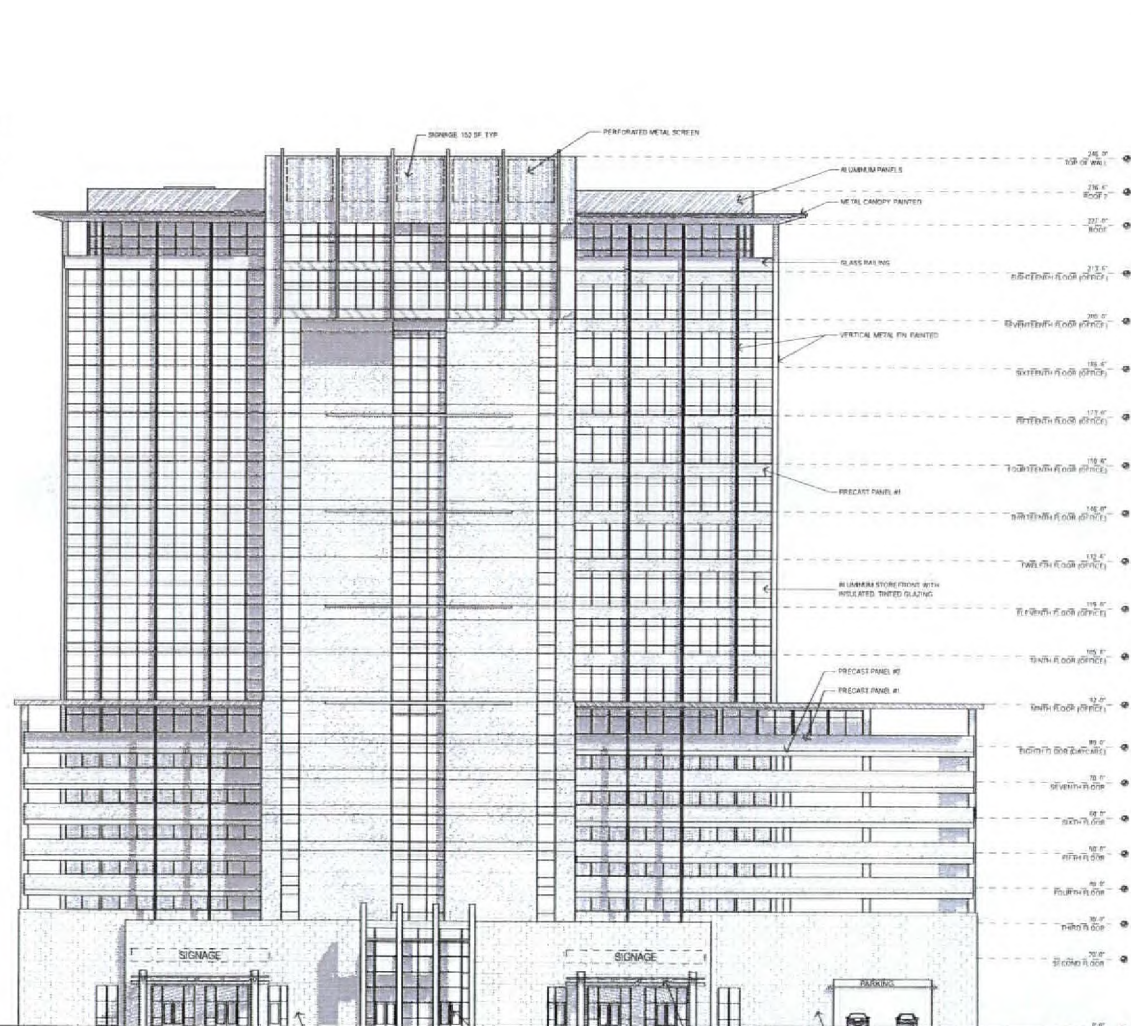
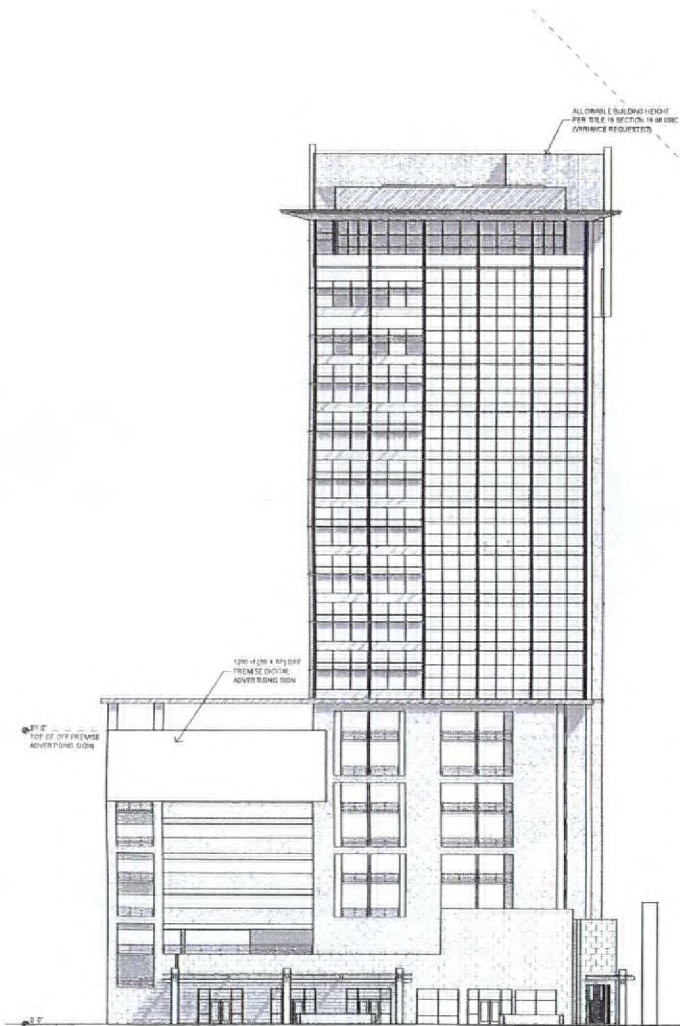
1 City of Las Vegas 1/15/08
2 SUP. VEH. SIGNAGE
NO. DESIGN REFERENCE DATE

ISSUED
TITLE
BUILDING
ELEVATIONS

02 APPROVED NO.
A201
Ahern Corporate Center

VAR-26447
REVISED
02/28/08 PC

RECEIVED
FEB 05 2008



D1 EAST ELEVATION
1/16" = 1'-0"

D2 NORTH ELEVATION
1/16" = 1'-0"

Ahern Corporate Center
Special Use Permit
SW Corner of Bonanza and Martin L. King
Las Vegas, Nevada 89106

APTUS Architecture

1200 South 6th Street
Suite 200
Las Vegas, Nevada 89104
702.735.1000
info@aptusarch.com

APTUS PROJECT NO: 06.011

ARCHITECT

ENGINEER

NOTES

COPYRIGHT 2008 BY APTUS ARCHITECTURE

NO.	DESCRIPTION	DATE
2	City of Las Vegas S.U.P. VAR Submittal #1	02.24.08
1	City of Las Vegas S.U.P. VAR Submittal	1.13.08
NO.	DESCRIPTION	DATE

ISSUED

TITLE
BUILDING ELEVATIONS

DRAWING NO.

VAR-26447
REVISED
02/28/08 PC

RECEIVED
FEB 05 2008