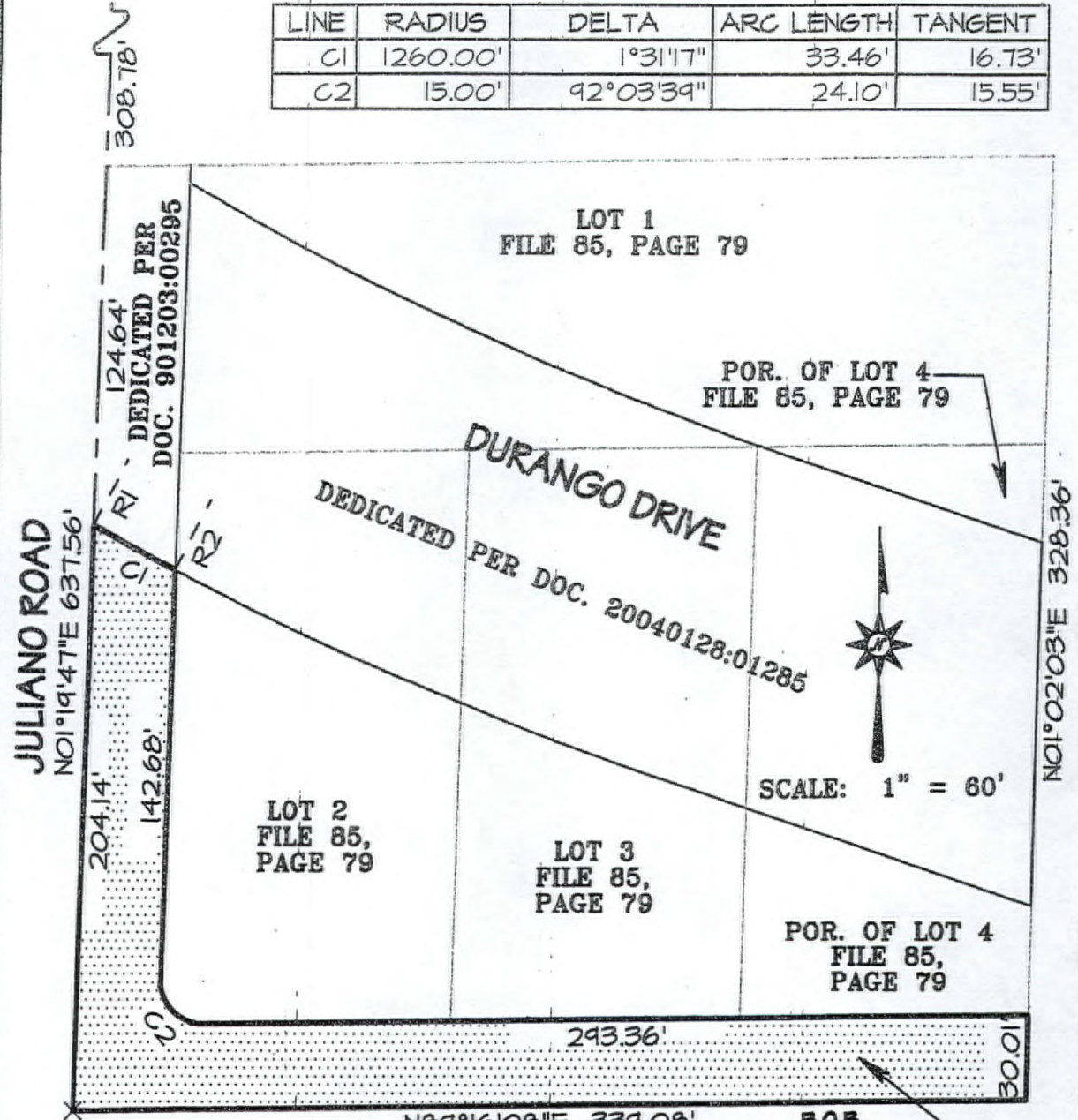


NW-NE
1/64 COR.

LINE	BEARING	DISTANCE
R1	S28°21'44"W	60.77'
R2	S26°50'27"W	60.31'

LINE	RADIUS	DELTA	ARC LENGTH	TANGENT
C1	1260.00'	1°31'17"	33.46'	16.73'
C2	15.00'	92°03'39"	24.10'	15.55'



JULIANO ROAD
N01°19'47"E 637.56'

124.64'
DEDICATED PER
DOC. 901203:00295

204.14'
142.68'

LOT 1
FILE 85, PAGE 79

POR. OF LOT 4
FILE 85, PAGE 79

DURANGO DRIVE
DEDICATED PER DOC. 20040128:01285

LOT 2
FILE 85,
PAGE 79

LOT 3
FILE 85,
PAGE 79

POR. OF LOT 4
FILE 85,
PAGE 79

SCALE: 1" = 60'

N01°02'03"E 328.36'

CW-NE
1/64 COR.

N89°16'08"E 339.08'

AZURE WAY

B.O.B.

AREA TO BE VACATED
15,205 S.F. ±



EXHIBIT TO ACCOMPANY LEGAL DESCRIPTION
JULIANO ROAD & AZURE WAY
RIGHT OF WAY VACATION
POR. NW 1/4 NE 1/4, SEC. 29, T19S, R60E, MDM
CITY OF LAS VEGAS - SURVEY
3001 RONEMUS DR., LAS VEGAS, NV 89128 ~ 702) 229-6217

DWG: JULIANO RILEY, PRO
DRAWN BY: NJPA
CHECKED BY: ARR
SHEET 1 OF 1
DATE: JAN. 2008

VAC-26793
03/27/08 PC

RECEIVED
FEB. 07 2008