

**Parcels Owned by
US Home Corporation**

125-07-815-020 thru 023
125-07-815-060

RECEIVED
MAR 03 2008

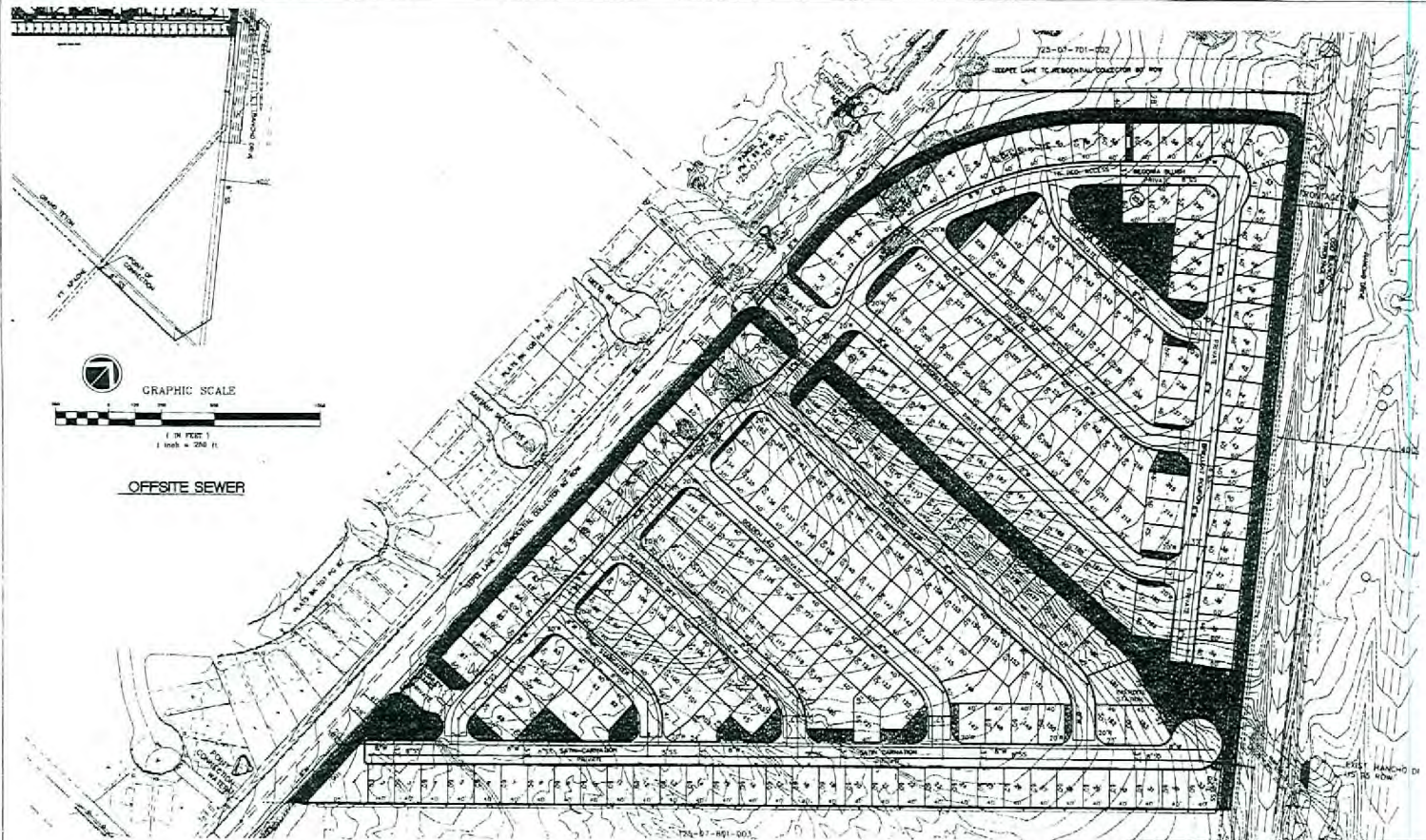
**Parcels Owned by
MS Rialto Sky Ridge NV, LLC**

125-07-713-001 thru 005
125-07-713-046 thru 054
125-07-713-059 thru 065

125-07-815-001 thru 014
125-07-815-024 thru 059
125-07-815-061

125-07-816-001 thru 101

RECEIVED
MAR 03 2008



VICINITY MAP
N

OWNER/DEVELOPER
SOUTHWEST HOMES, LLC
245 E. BOWEN SPRINGS ROAD
LAS VEGAS, NV
89115
PHONE: 702-947-1333

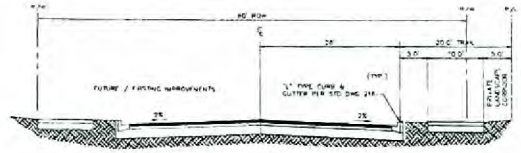
SITE SUMMARY
APR 22-07-001-002
EXISTING ZONING: M-TC
GROSS AREA: 24.36 AC
NET AREA: 22.31 AC
TOTAL LOTS: 212
DWELLING UNITS PER ACRE (DUPU): 212/24.36=8.71 DU/A
OPEN SPACE REQUIRED: 15.28 ± AC ± 7.11% (24.36) = 4.16 ACRES
OPEN SPACE PROVIDED: 4.87 AC
IMPROVED DRAINAGE (50%): 0.78 AC
TOTAL IMPROVED: 3.14 AC (15.8% OF REQUIRED)



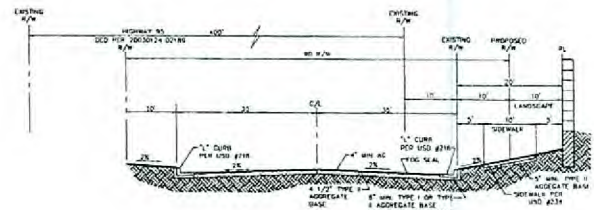
37' WIDE PRIVATE STREET SECTION
N. 115
WILSON STREET



OFFSITE SEWER



80' WIDE HALF STREET SECTION
N. 115
TOWN CENTER RESIDENTIAL COLLECTION
WITH TRAIL ELEMENT



90' WIDE STREET SECTION
N. 115
TOWN CENTER FRONTAGE ROAD
WITH TRAIL ELEMENT

UTILITY SERVICES
WATER - LAS VEGAS VALLEY WATER DISTRICT
SEWER - CITY OF LAS VEGAS SANITATION DISTRICT
GAS - SOUTHWEST GAS
TELEPHONE - SPRINT
CABLE - COX CABLE
WASTE DISPOSAL - REPUBLIC SERVICES OF SOUTHERN NEVADA

NOTICE TO CONTRACTOR
EXISTING UTILITY LOCATIONS SHOWN HEREIN ARE APPROXIMATE ONLY. IT SHALL BE THE CONTRACTOR'S RESPONSIBILITY TO DETERMINE THE EXACT VERTICAL AND HORIZONTAL LOCATION OF ALL EXISTING UNDERGROUND UTILITIES PRIOR TO COMMENCING CONSTRUCTION. NO REPRESENTATION IS MADE THAT ALL EXISTING UTILITIES ARE SHOWN HEREIN. THE ENGINEER ASSUMES NO RESPONSIBILITY FOR UTILITIES NOT SHOWN OR UTILITIES NOT SHOWN IN THEIR PROPER LOCATION.

CALL before you Dig
1-800-227-2500
RECORDING SERVICE, LLC
800-227-2500

PROJECT: ROC-27156
DATE: FEB 03/08
TEAM: TEAM 1
SCALE: 1"=80'
SHEET: 02-11A
DIVISION: CIVIL

TENTATIVE MAP
SKY RIDGE
SOUTHWEST HOMES

APPROVED FOR RECORD
DATE: 02/12/08
BY: [Signature]

REGISTERED PROFESSIONAL ENGINEER
STATE OF NEVADA
NO. 40001
NAME: [Name]

ROC-27156
04-16-08 CC

RECEIVED
MAR 03 2008