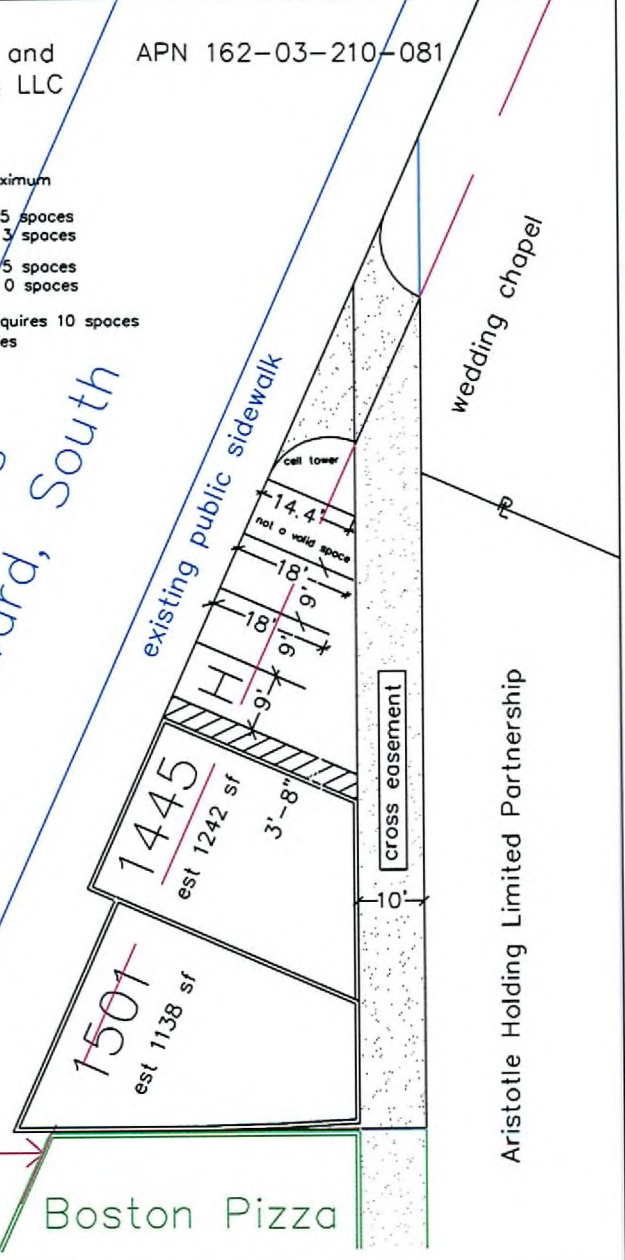


Solarium Enterprises LP and Nevada Horizon Holdings LLC Solada Group ?

APN 162-03-210-081

Total Parking Spaces Available = 3 maximum  
1501 LVBS (1138 sf suite) requires 5 spaces  
1501 LVBS (1138 sf suite) provides 3 spaces  
1441 LVBS (1242 sf suite) requires 5 spaces  
1441 LVBS (1242 sf suite) provides 0 spaces  
2280 gross sf building (both suites) requires 10 spaces  
2280 gross sf building provides 3 spaces

*LVBS Centerline*  
*Northbound travel lanes*  
*Las Vegas Boulevard, South*

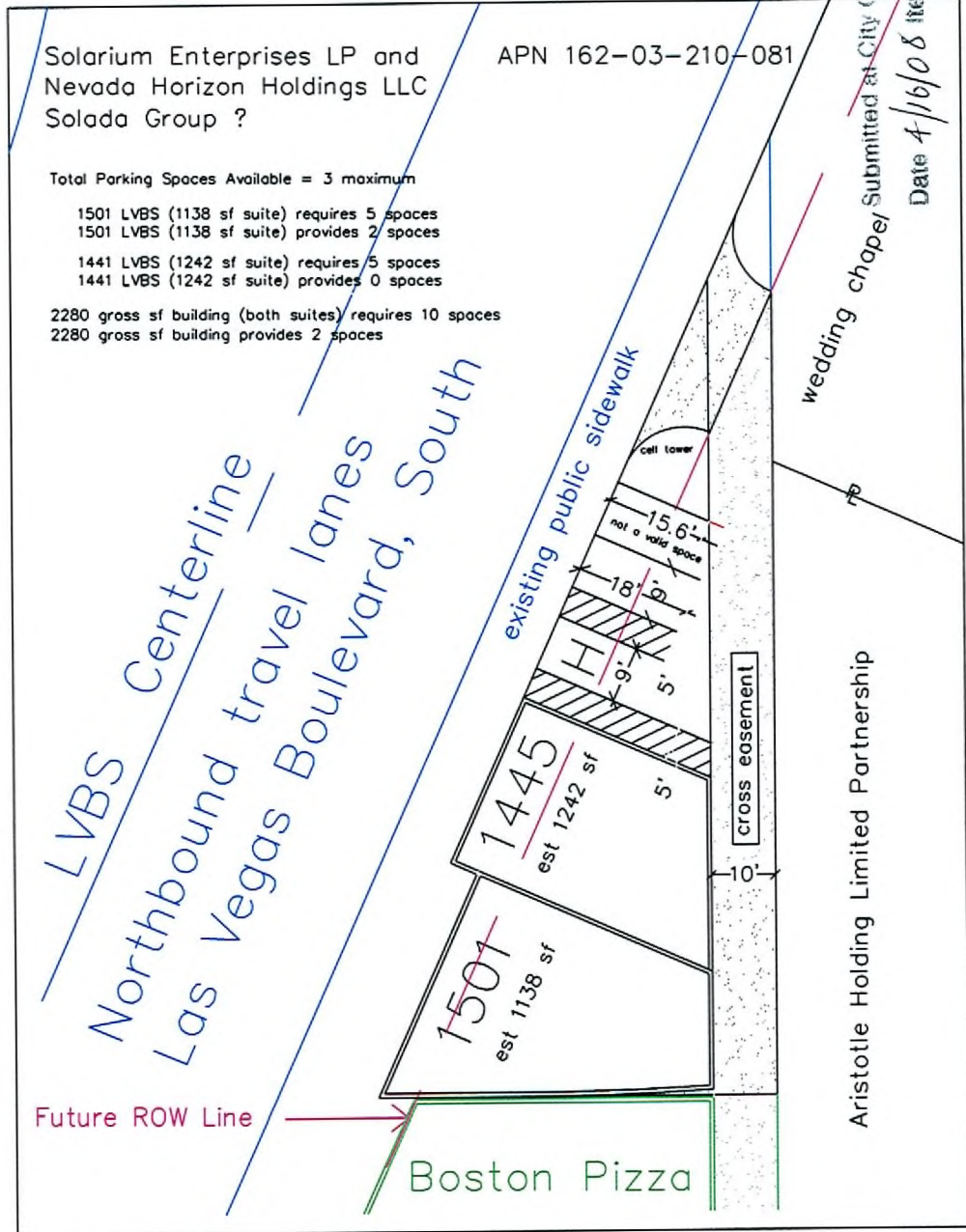


Solarium Enterprises LP and Nevada Horizon Holdings LLC Solada Group ?

APN 162-03-210-081

Total Parking Spaces Available = 3 maximum  
1501 LVBS (1138 sf suite) requires 5 spaces  
1501 LVBS (1138 sf suite) provides 2 spaces  
1441 LVBS (1242 sf suite) requires 5 spaces  
1441 LVBS (1242 sf suite) provides 0 spaces  
2280 gross sf building (both suites) requires 10 spaces  
2280 gross sf building provides 2 spaces

*LVBS Centerline*  
*Northbound travel lanes*  
*Las Vegas Boulevard, South*



Submitted at City Council  
Date 4/16/08 Item 109

**PARKING REQUIREMENTS - DOWNTOWN**

USE	Gross Floor Area or Number of Units	Base Parking Requirement			Provided		Compliance
		Parking Ratio	Parking*		Parking		
			Regular	Handicaped #	Regular	Handicaped	
Suite 1501	1138 sq ft	1 per 250 sq ft	5	1	2	1	No
Suite 1441	1242 sq ft	1 per 250 sq ft	5	0	0	0	No
<b>TOTAL</b> (including handicap)	2280 sq ft		10	1	3	1	Not Possible**

\* Fractions rounded up per 19.10.010 E.2

\*\* The entire site has no more land for adding parking

# 19.10. G.3.a. Handicapped parking spaces shall be at least nine feet wide and shall have an adjacent access aisle (a minimum of five feet in width) on each side