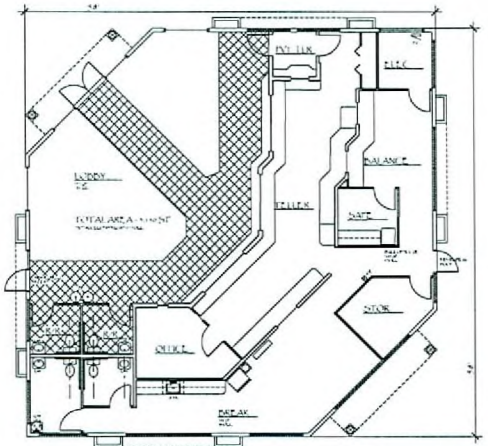
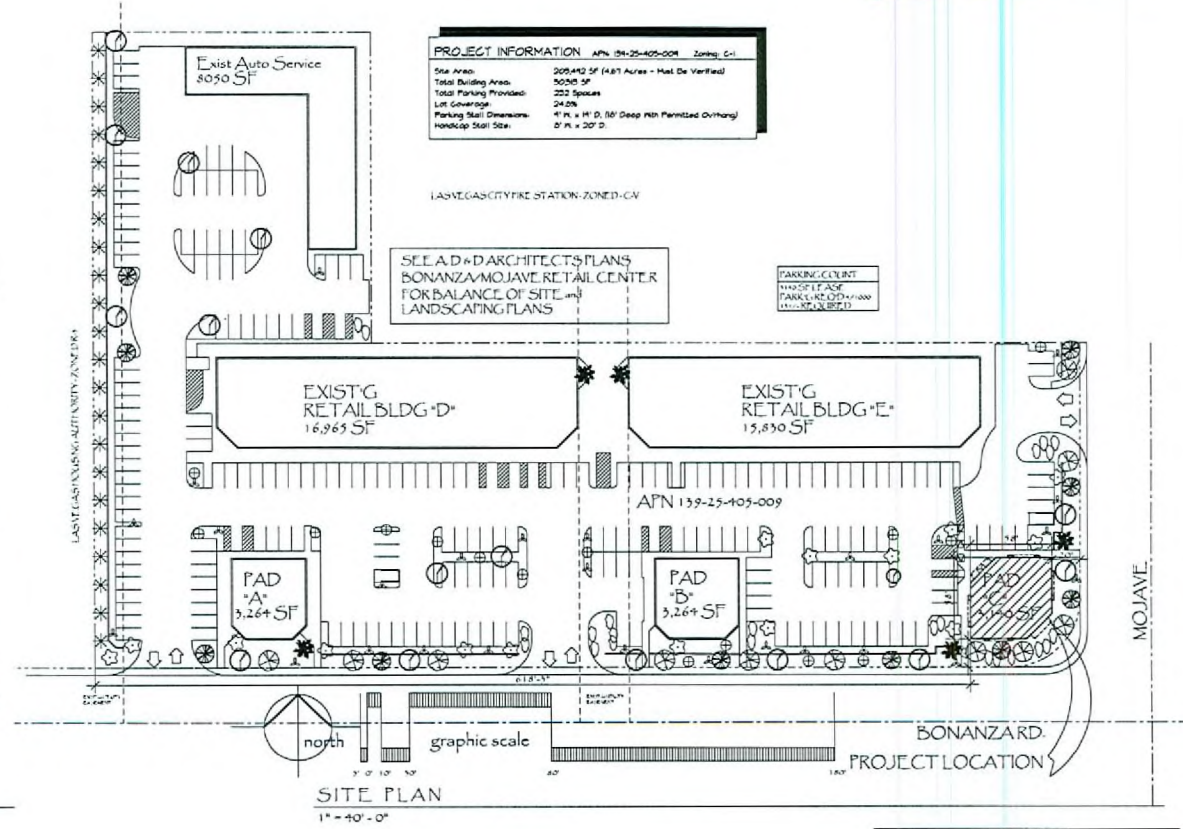
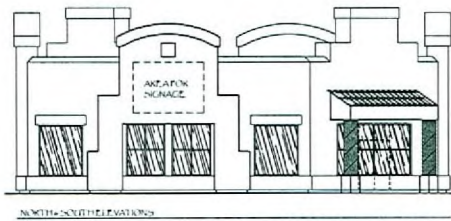


RECEIVED
MAR 07 2008



FLOOR PLAN - PAD *C*
1/8" = 1'-0"



SITE PLAN
1" = 10'-0"



REVISIONS



PATCO BUILDING SYSTEMS
LIC # 0051705
FAX: 509-535-3720
E: 2711 SPRAGUE
SPOKANE, WASHINGTON 99202
509-535-3588

PROJECT: Bonanza Mojave Money Tree
Bonanza & Mojave
Las Vegas NV
Preliminary

DATE: Jan 31 2008
SHEET:

A-1

SUP-27256
04/24/08 PC

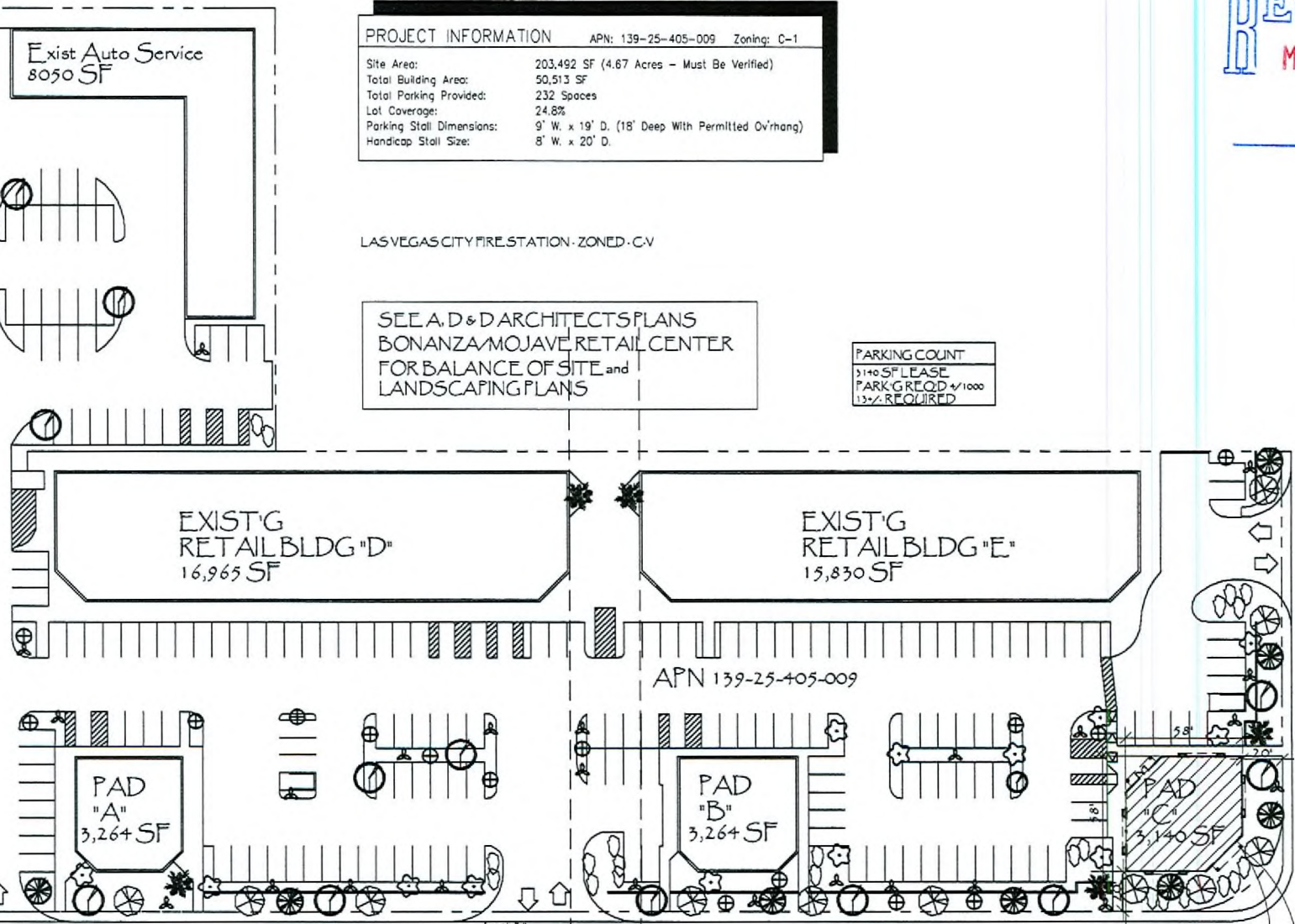
RECEIVED
MAR 07 2008

PROJECT INFORMATION	
APN:	139-25-405-009
Zoning:	C-1
Site Area:	203,492 SF (4.67 Acres - Must Be Verified)
Total Building Area:	50,513 SF
Total Parking Provided:	232 Spaces
Lot Coverage:	24.8%
Parking Stall Dimensions:	9' W. x 19' D. (18' Deep With Permitted Ov'hang)
Handicap Stall Size:	8' W. x 20' D.

LAS VEGAS CITY FIRE STATION - ZONED - CV

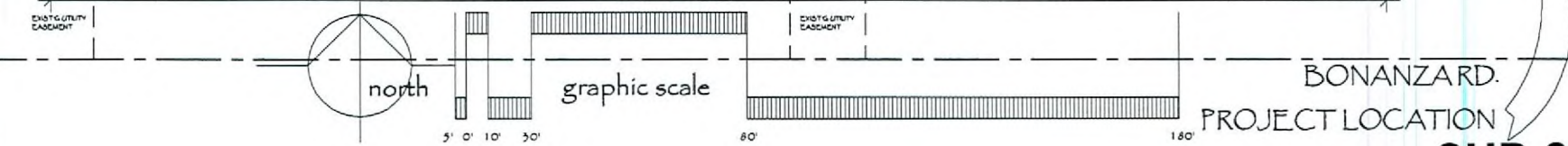
SEE A.D & D ARCHITECTS PLANS
FOR BALANCE OF SITE and
LANDSCAPING PLANS

PARKING COUNT	
3140 SF LEASE	
PARKING REQ'D @ 1000	
13% REQUIRED	



LAS VEGAS HOUSING AUTHORITY - ZONED R-3

MOJAVE

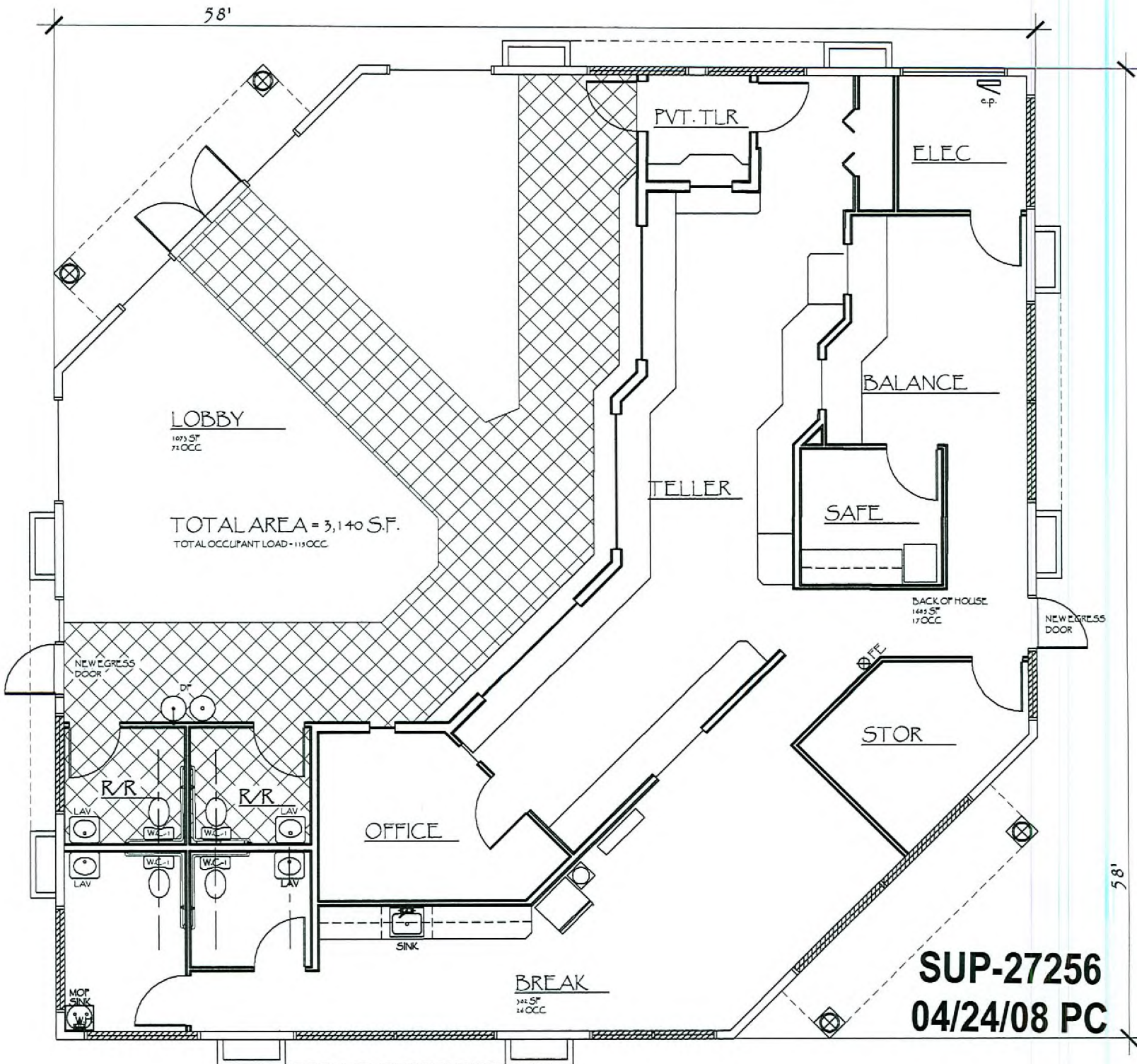


SITE PLAN

1" = 80' - 0"

SUP-27256
04/24/08 PC

Copyright 2007 Baker Construction



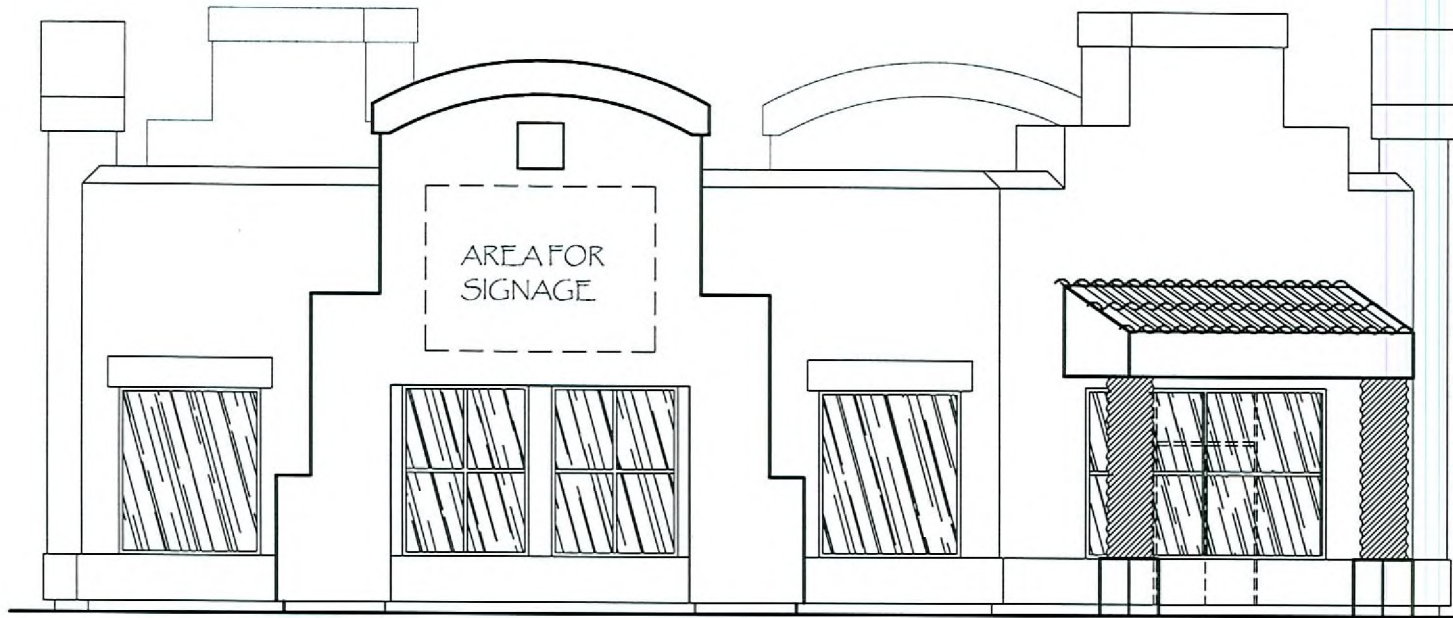
RECEIVED
MAR 07 2008

FLOOR PLAN - PAD "C"

1/8" = 1' ~ 0"

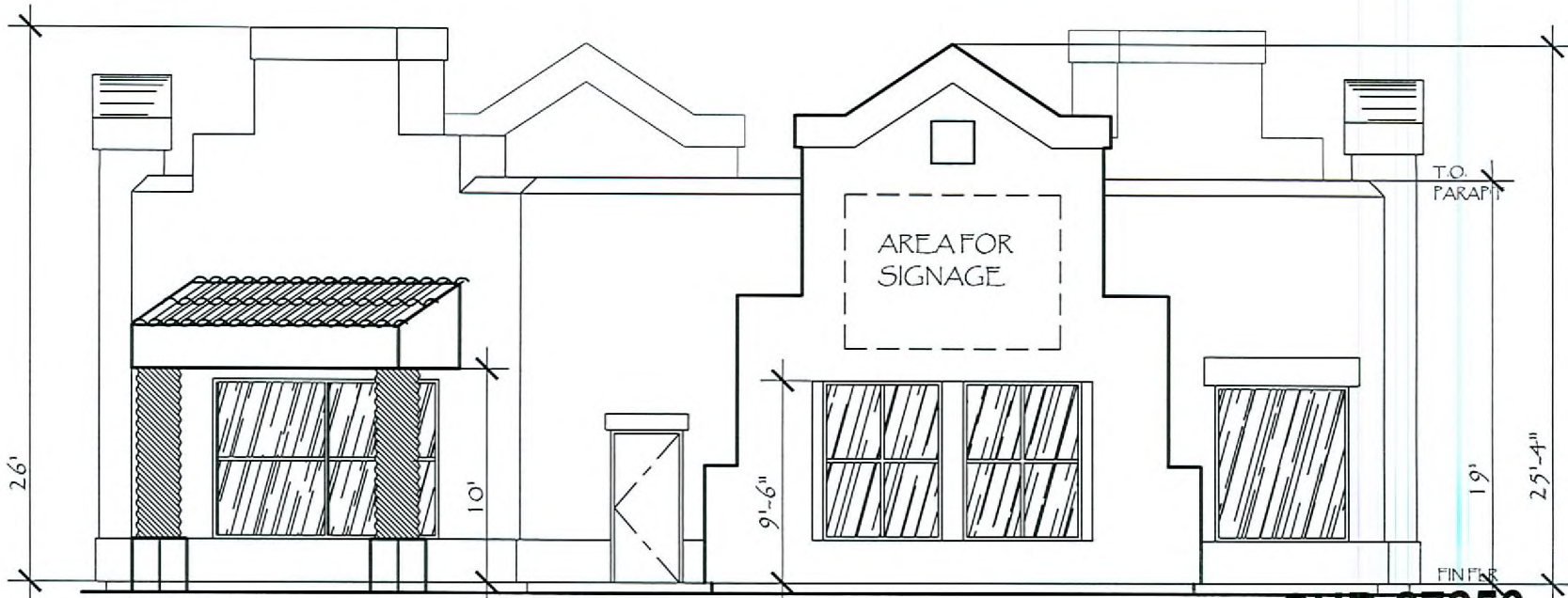
SUP-27256
04/24/08 PC

RECEIVED
MAR 07 2008



NORTH & SOUTH ELEVATIONS

1/8" = 1'-0"



EAST & WEST ELEVATIONS

1/8" = 1'-0"

ELEVATIONS - PAD " C "

1/8" = 1'-0"

SUP-27256
04/24/08 PC

