

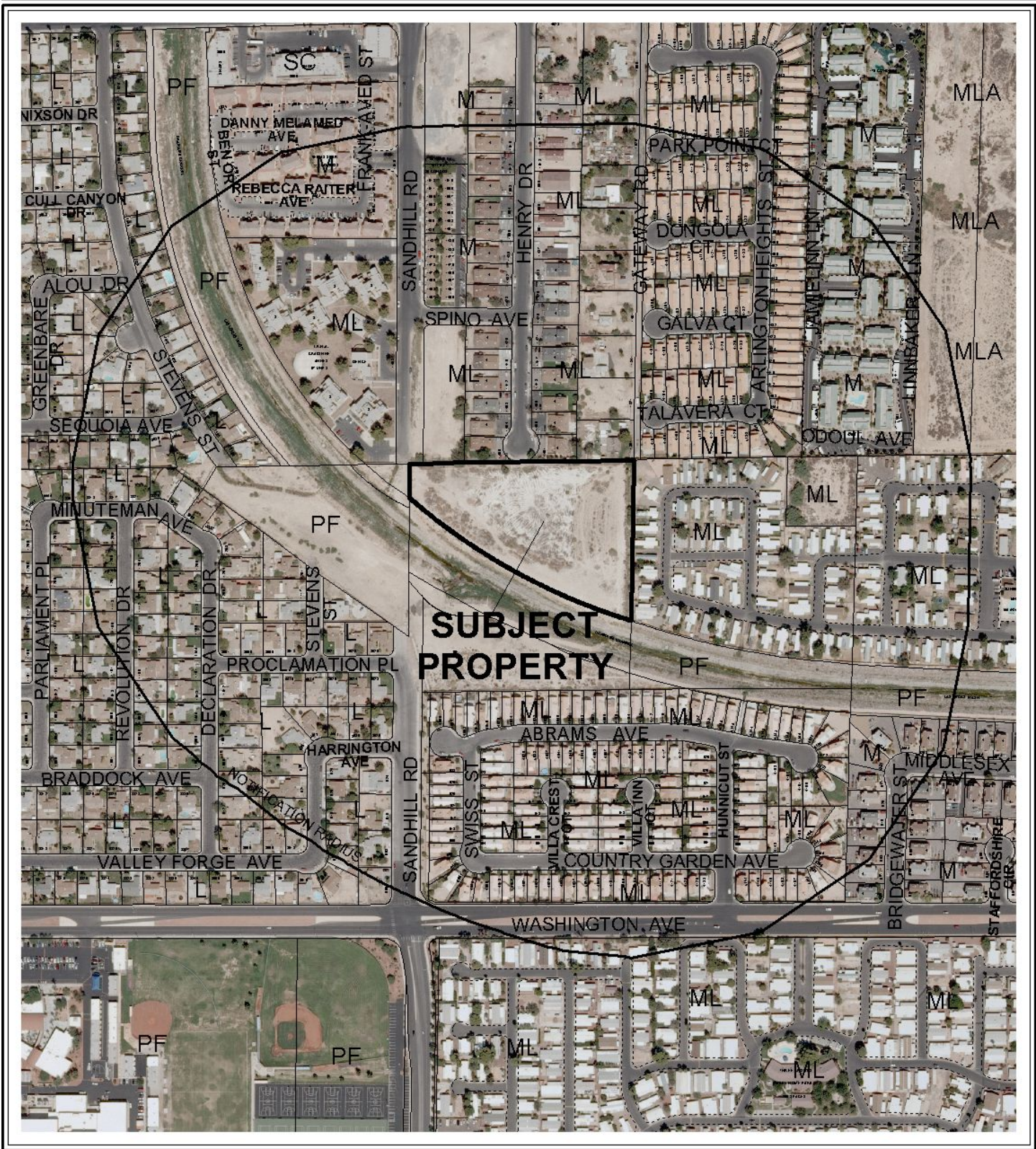
CASE: GPA-27207

RADIUS: 1000 FT

GENERAL LAND USE OF SUBJECT PROPERTY:
ML (MEDIUM LOW DENSITY RESIDENTIAL)

PROPOSED GENERAL LAND USE OF SUBJECT PROPERTY:
PR-OS (PARKS/RECREATION/OPEN SPACE)





CASE: GPA-27207

RADIUS: 1000 FT

GENERAL LAND USE OF SUBJECT PROPERTY:
ML (MEDIUM LOW DENSITY RESIDENTIAL)

PROPOSED GENERAL LAND USE OF SUBJECT PROPERTY:
PR-OS (PARKS/RECREATION/OPEN SPACE)

