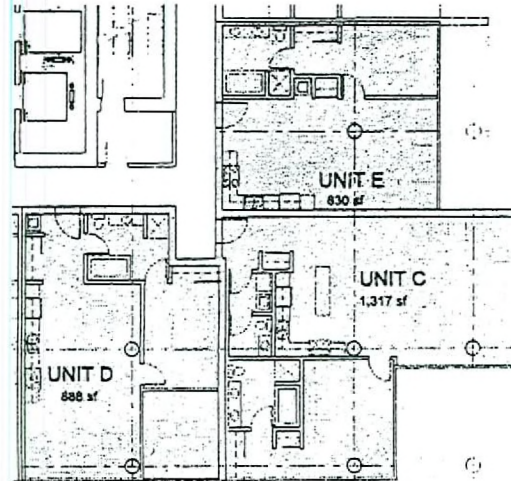


TYPICAL UNIT PLAN - 1.00
UNIT A1, B1, B2



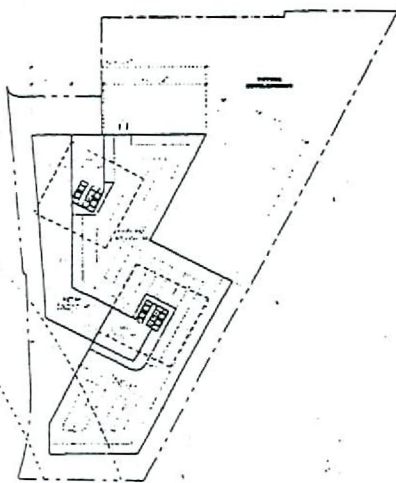
TYPICAL UNIT PLAN - PENTHOUSE
UNIT C, D, E

JAN 17 2008

SITE DEVELOPMENT PLAN REVIEW
CITY OF LAS VEGAS, NEVADA
NOVEMBER 04, 2005



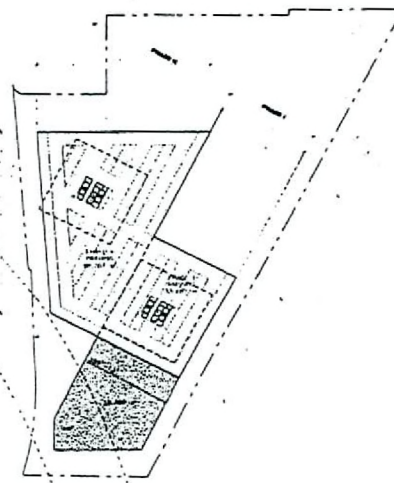
EOT-26482
03-05-08 CC



RETAIL / PARKING
GROUND LEVEL

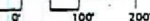


PARKING
LEVELS 2-4



PARKING
LEVELS 5-7

FLOOR / PHASING PLANS

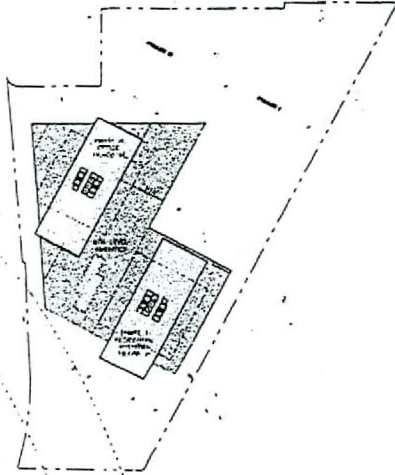


JAN 17 2008

SITE DEVELOPMENT PLAN REVIEW
CITY OF LAS VEGAS, NEVADA
NOVEMBER 04, 2005



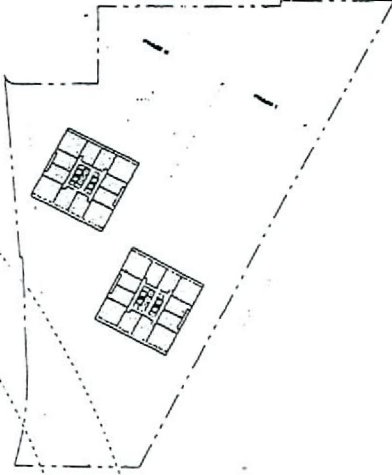
EOT-26482
03-05-08 CC



OFFICE / AMENITIES
LEVELS 8-9



RESIDENTIAL
LEVELS 13-40

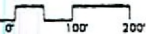


PENTHOUSE
LEVELS 41-45

RECEIVED
JAN 17 2008



FLOOR / PHASING PLANS



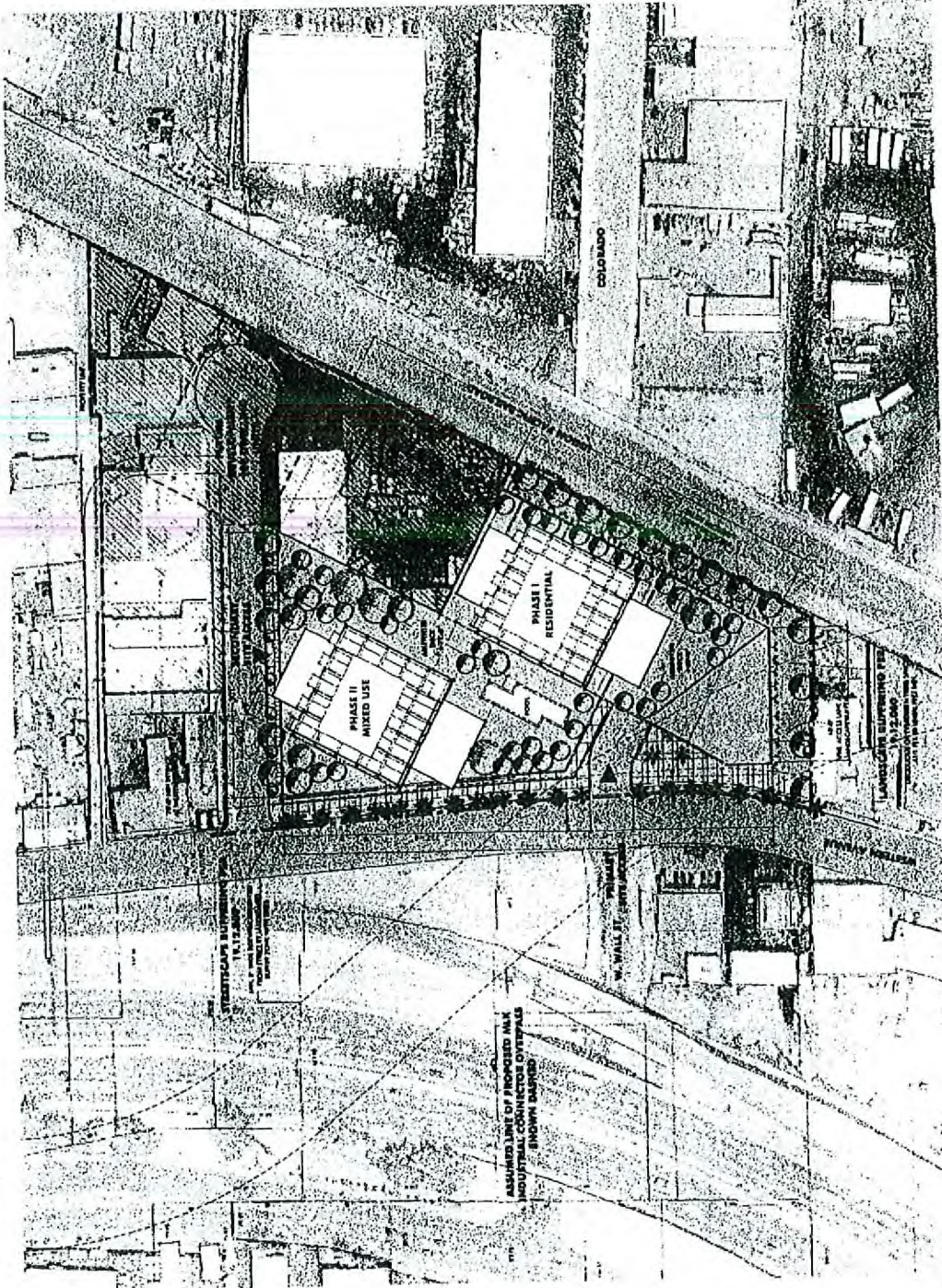
EOT-26482
03-05-08 CC

SITE DEVELOPMENT PLAN REVIEW
CITY OF LAS VEGAS, NEVADA
NOVEMBER 04, 2005

WALL STREET TOWERS

LANDSCAPE LEGEND

Symbol	Description
(Circle with cross)	Tree
(Starburst)	Plant
(Dotted pattern)	Grass
(Diagonal lines)	Path
(Solid black)	Building
(Hatched)	Water
(Dashed)	Boundary



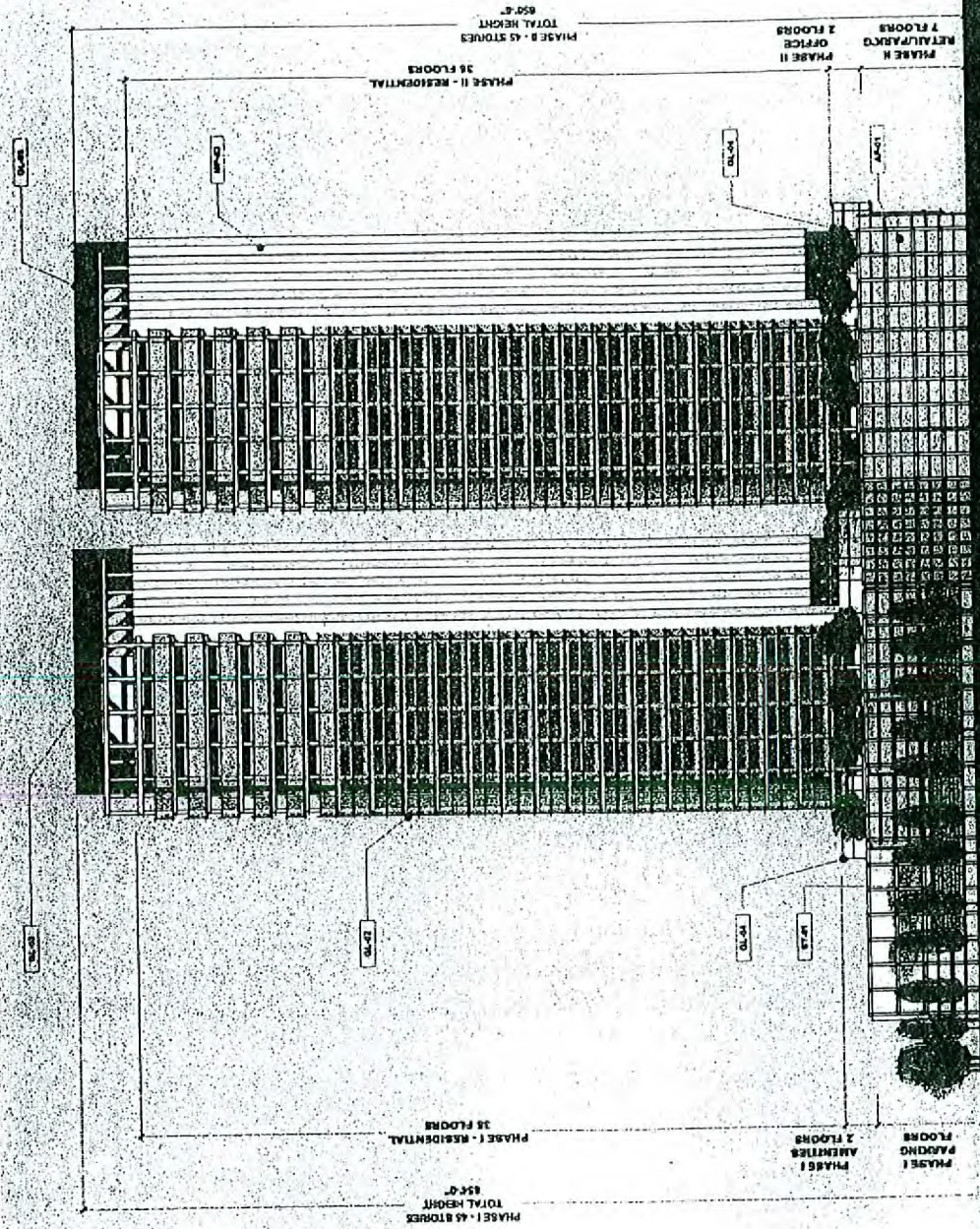
2007 1 11 AM

SITE DEVELOPMENT PLAN REVIEW
CITY OF LAS VEGAS, NEVADA
NOVEMBER 04, 2005

EOT-26482
03-05-08 CC



JAN 7 2008



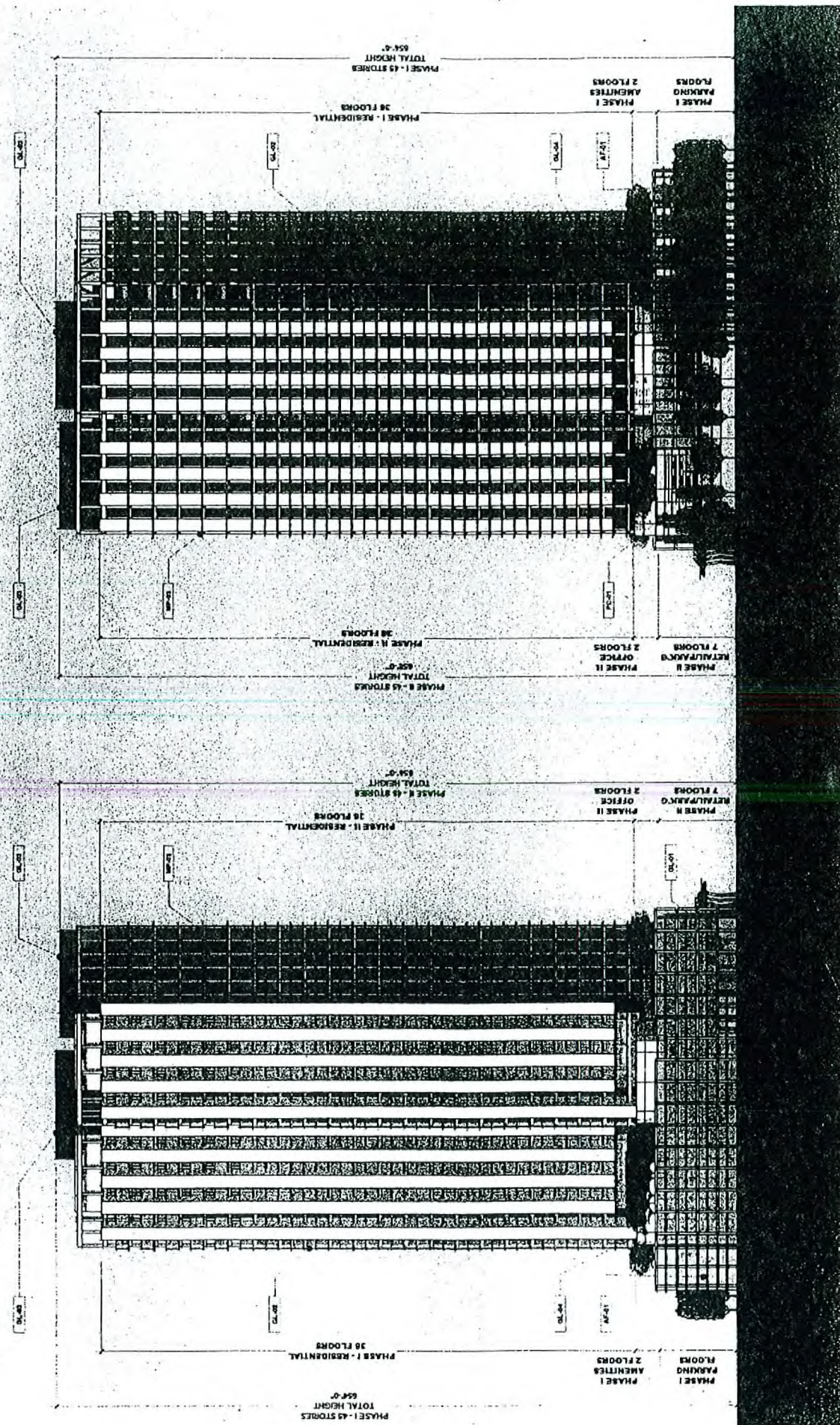
SITE DEVELOPMENT PLAN REVIEW
CITY OF LAS VEGAS, NEVADA
NOVEMBER 04, 2003



EAST ELEVATION

EOT-26482
03-05-08 CC

WALL STREET TOWERS



SOUTH ELEVATION

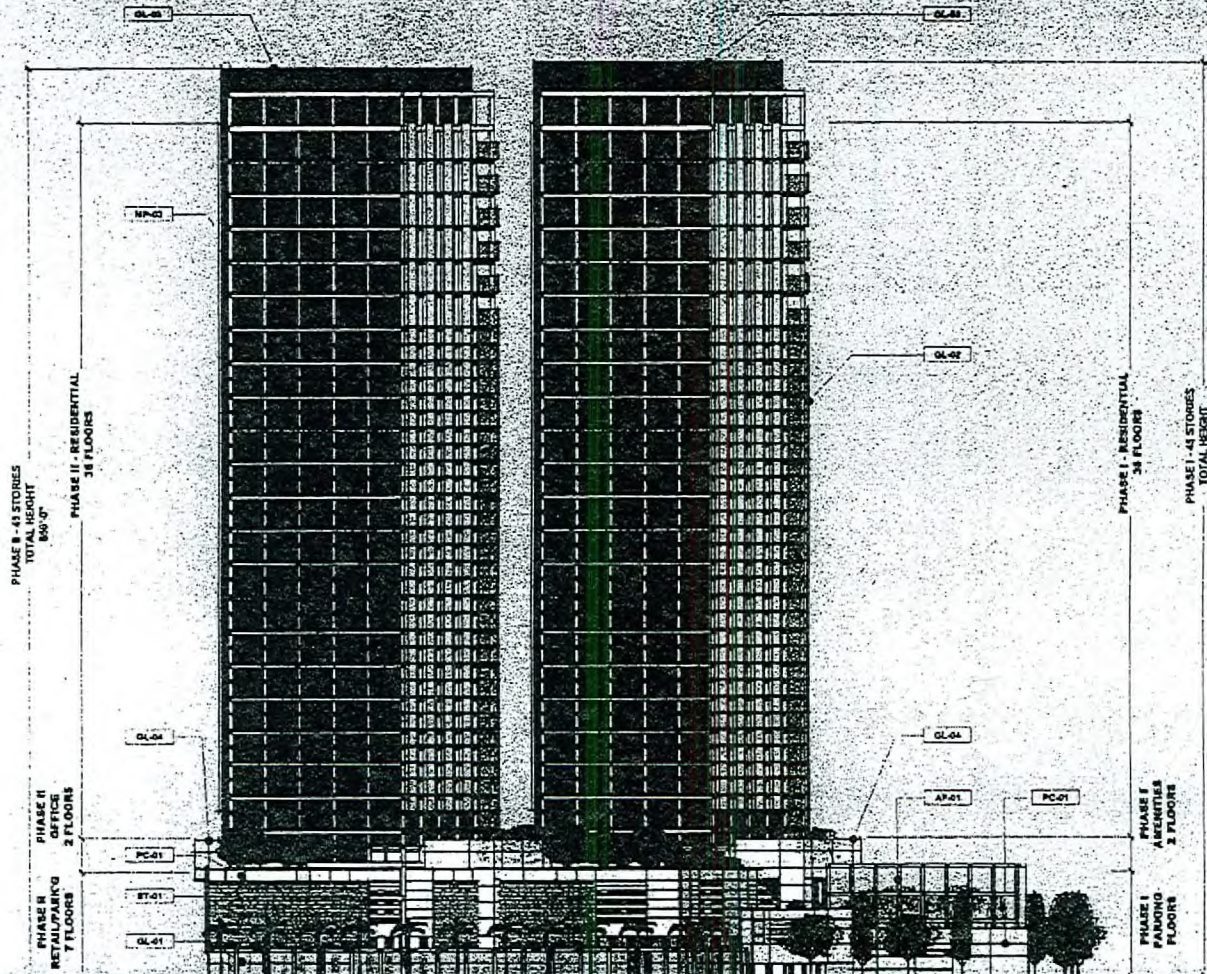
NORTH ELEVATION

WJZ ARCHITECTURE

SITE DEVELOPMENT PLAN REVIEW
CITY OF LAS VEGAS, NEVADA
NOVEMBER 04, 2005

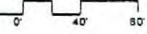
EOT-26482
03-05-08 CC

NOV 17 2004



JAN 17 2008

WEST ELEVATION



SITE DEVELOPMENT PLAN REVIEW
CITY OF LAS VEGAS, NEVADA
NOVEMBER 04, 2005

EOT-26482
03-05-08 CC