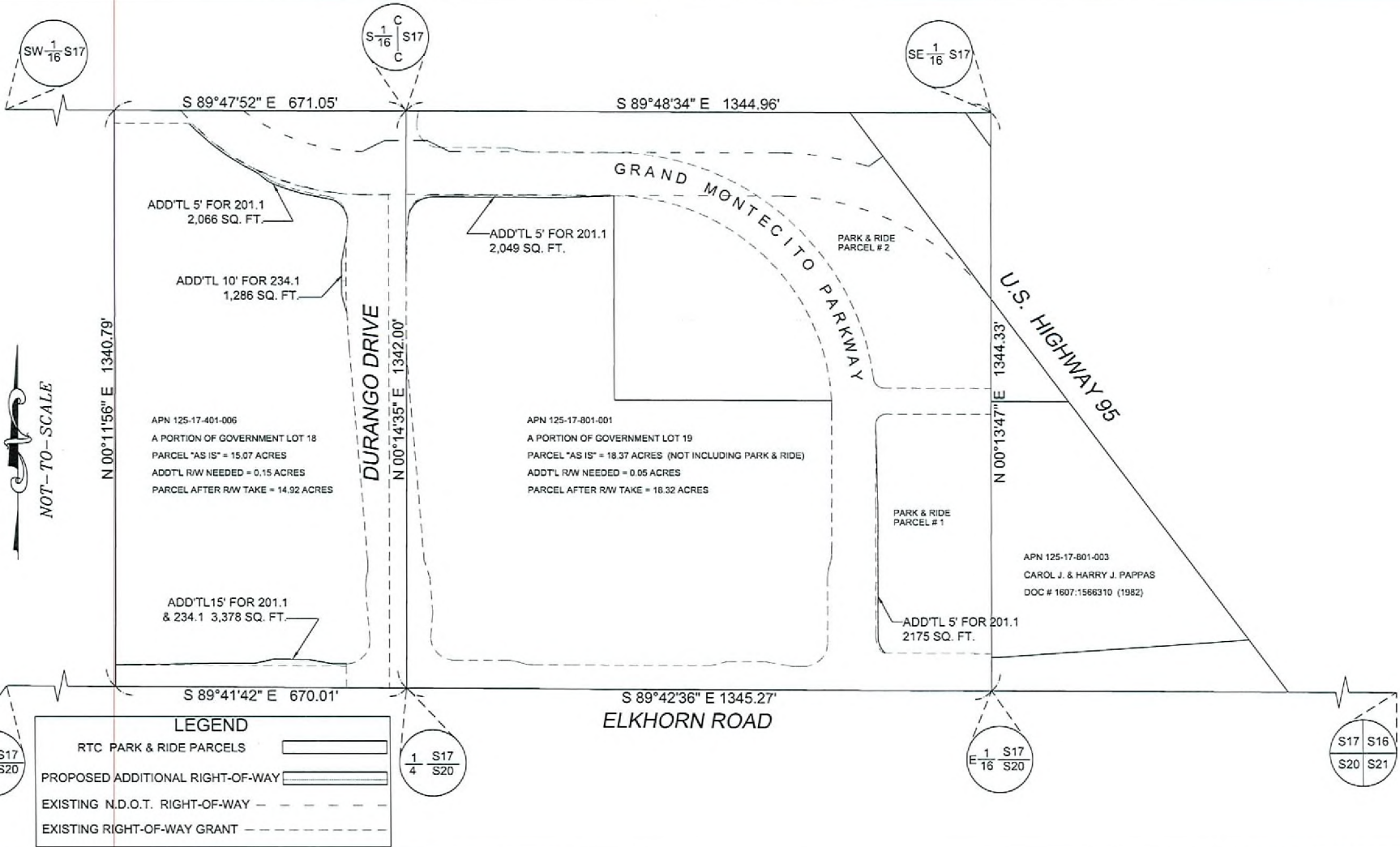


EXHIBIT F



ADDITIONAL R/W NEEDED ON CITY-LEASED USA PARCELS

THIS MAP EXHIBIT IS FOR THE USE OF CITY OF LAS VEGAS STAFF, AND WAS PREPARED USING MULTIPLE DATA SOURCES OF PUBLIC RECORD. IT IS NOT THE RESULT OF A FIELD SURVEY AND IS NOT GUARANTEED TO BE COMPLETELY ACCURATE. THIS MAP EXHIBIT IS NOT INTENDED TO BE USED TO SUB-DIVIDE LAND IN A MANNER NOT IN ACCORDANCE WITH NEVADA REVISED STATUTES.

THE ROADWAY NETWORK DEPICTED ON THIS EXHIBIT IS CONCEPTUAL AND PRELIMINARY; THE FINAL ALIGNMENTS OF THE ROADWAYS SHOWN HEREIN ARE SUBJECT TO AGREEMENT BETWEEN THE FIVE ABUTTING STAKEHOLDERS (CITY OF LAS VEGAS, COLLEGE OF SOUTHERN NEVADA, NEVADA DEPT. OF TRANSPORTATION, CLARK COUNTY REGIONAL TRANSPORTATION COMMISSION, AND HARRY AND CAROL PAPPAS) AND MAY DIFFER FROM THOSE SHOWN.

MAP EXHIBIT PREPARED DECEMBER 7, 2007



DEPARTMENT OF PUBLIC WORKS
ENGINEERING PLANNING DIVISION