

X NW-NE
1/64 COR.

LINE	BEARING	DISTANCE
R1	S28°21'44"W	60.77'
R2	S26°50'27"W	60.31'

LINE	RADIUS	DELTA	ARC LENGTH	TANGENT
C1	1260.00'	1°31'17"	33.46'	16.73'
C2	15.00'	92°03'39"	24.10'	15.55'

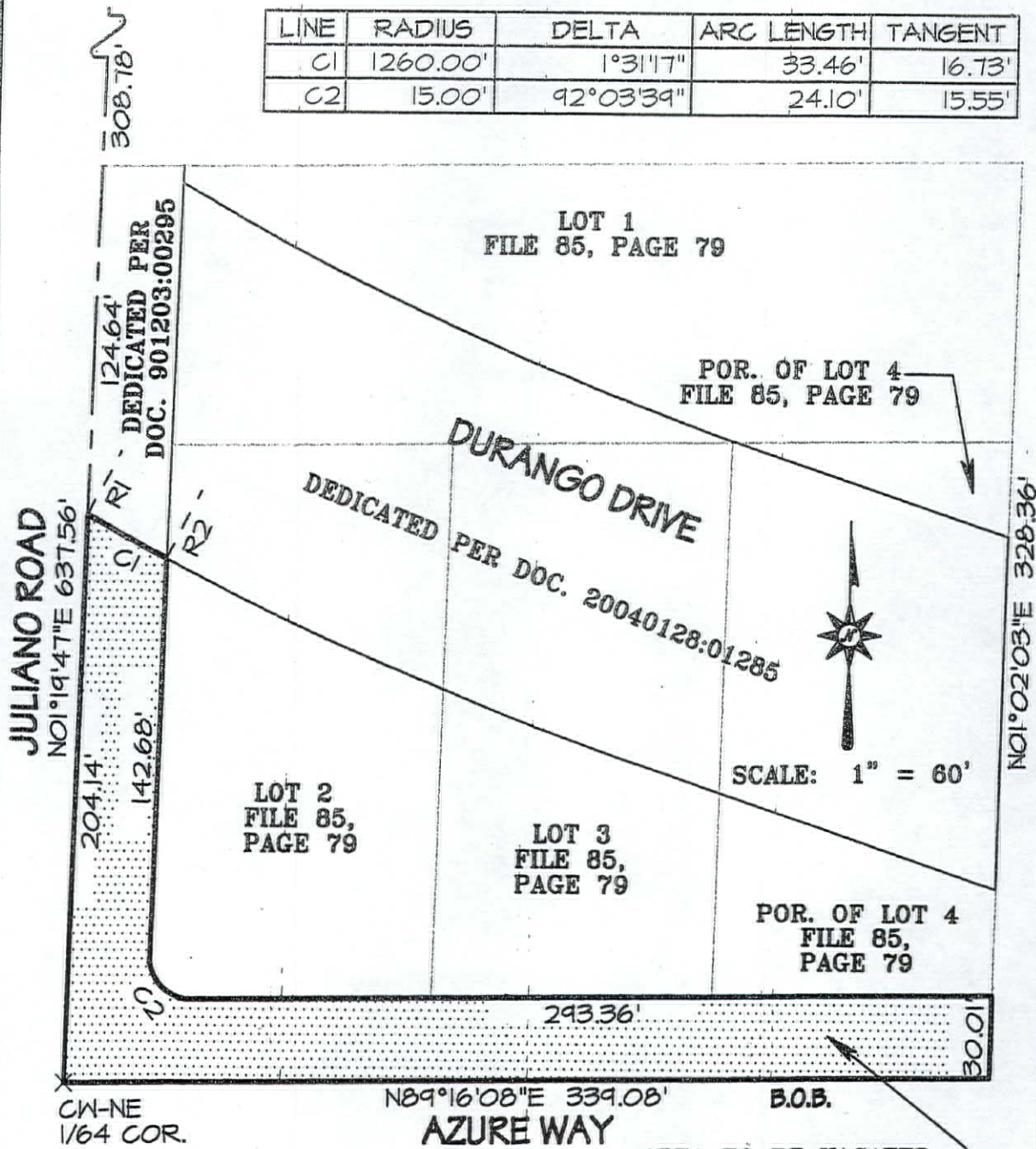


EXHIBIT TO ACCOMPANY LEGAL DESCRIPTION
JULIANO ROAD & AZURE WAY
RIGHT OF WAY VACATION
POR. NW 1/4 NE 1/4, SEC. 29, T19S, R60E, MDM

DWG: JULIANO RILEY.PRO

DRAWN BY: NJPA

CHECKED BY: ARR

SHEET 1 OF 1

CITY OF LAS VEGAS - SURVEY

3001 RONEMUS DR., LAS VEGAS, NV 89128 ~ 702) 229-6217

DATE: JAN. 2008

VAC-26793

03/27/08 PC

RECEIVED
FEB. 07 2008