

- LEGEND**
- AL ALUMINUM CAP
 - VG VALLEY GUTTER
 - PP POWER POLE
 - LP LIGHT POLE
 - SL STREET LIGHT
 - SLV STREET LIGHT VAULT
 - EMB ELECTRIC METER BOX
 - ET ELECTRIC TRANSFORMER
 - EV ELECTRIC VAULT
 - TE TELEPHONE VAULT
 - TMH TELEPHONE MANHOLE
 - TV TRASH ENCLOSURE
 - GV GAS VALVE
 - GM GAS METER
 - WV WATER VALVE
 - WM WATER METER
 - CO CULM OUT
 - PH FIRE HYDRANT
 - SMH SEWER MANHOLE
 - SD STORM DRAIN
 - BL BOLLARD
 - MB MAIL BOX
 - VS VALVE
 - MD MAIN DISCONNECT
 - TSV TRAFFIC SERVICE VAULT
 - LS LANDSCAPING
 - PL PLANTER BOX
 - PF PALM TREE
 - ST STREET LIGHT
 - DRIVEWAY WITH CURB CUTS
 - DRIVEWAY
 - HANDICAPPED PARKING
 - PROPERTY LINE
 - - - BUILDING LINE

NOTE
THIS LOT CONTAINS 340186 SQ. FT.
7.61 ACRES

NOTE
IN THIS PHASE THERE ARE
335 PARKING SPACES 11' OF WHICH ARE
DESIGNATED AS HANDICAPPED

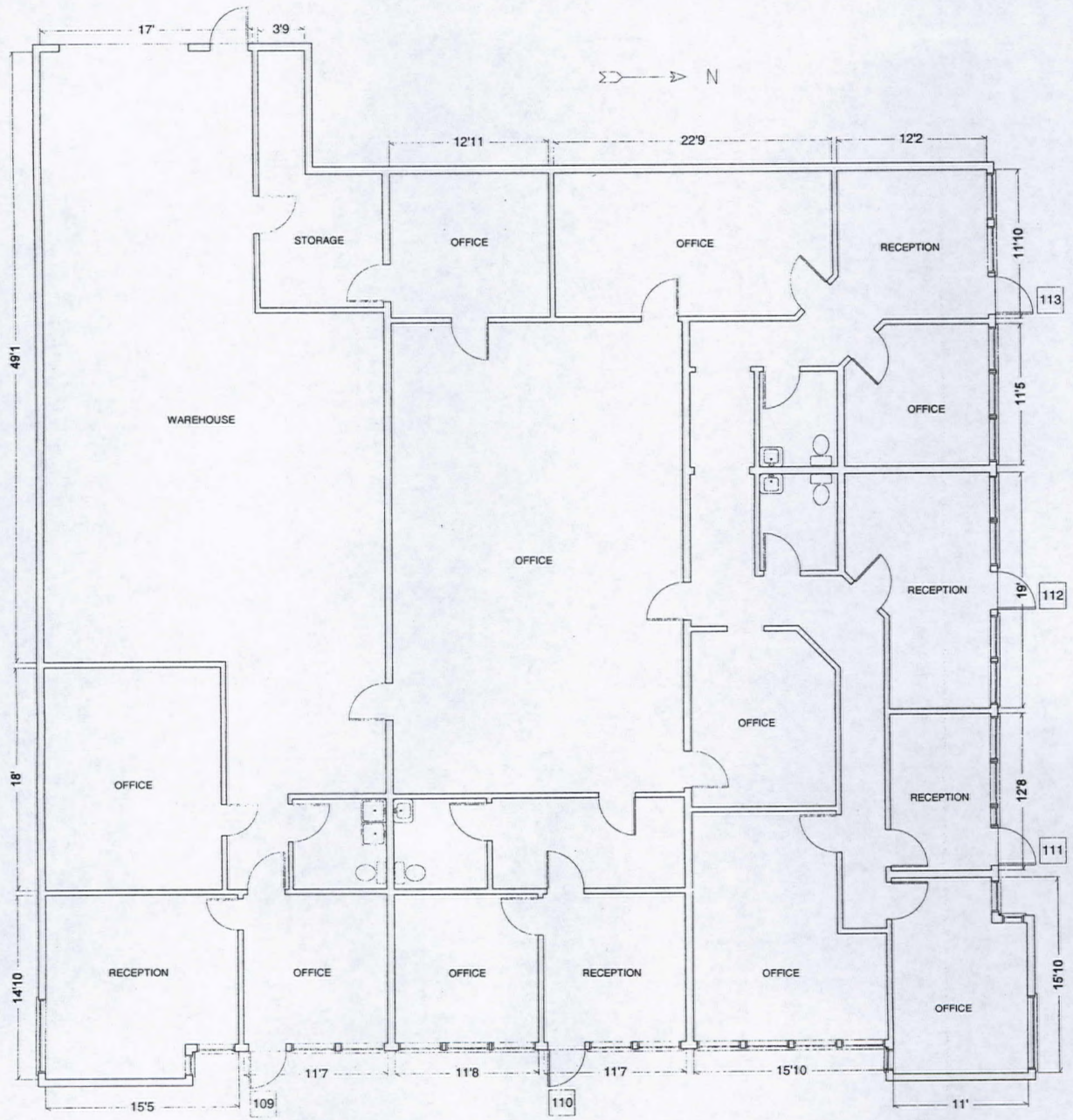
SUP-26576
 03/13/08 PC

JAN 25 2008

RECEIVED

JOB NO.	51 N PECOS Site Plan LAS VEGAS NEVADA		
DATE:			
DRAWN:			
CHECKED:			

REV	DATE	BY	REVISION	APPROVAL



OFFICE 4,423 SF
 WAREHOUSE 1,561 SF
 TOTAL 5,884 SF

51 N. PECOS - SUITES 109 ~ 113

MVDI

RECEIVED

JAN 25 2008

SUP-26576
 03/13/08 PC

THE SPECTRUM OF LAS VEGAS



Located on the northwest corner of Charleston Boulevard and Pecos Road, The Spectrum of Las Vegas is comprised of 37 buildings featuring freestanding, distribution and multi-tenant buildings totaling over 750,000 SF. The combination of flexible MD zoning and close proximity to the US 95 freeway gives The Spectrum of Las Vegas the ability to accommodate a wide range of business needs. Especially for every business that needs to serve Henderson, the Strip, Las Vegas and North Las Vegas, this is at the hub of all these submarkets!

- Multi-tenant buildings range from 1,000 SF to 5,000 SF with frontage on Charleston Boulevard, Pecos Road, and Mojave Road
- Freestanding light industrial and distribution buildings range from 8,000 SF to 74,000 SF
- Clear heights from 14' to 24' with grade level and dock high loading doors
- Enclosed yards
- Three-phase power

SUP-26576
03/13/08 PC



For more information
or
an appointment call
702.362.1400



3111 S. Valley View Blvd.
Suite #K-101
Las Vegas, NV 89102

www.harschnevada.com

